



## WILKESBORO WWTP EXPANSION

### Addendum #3 December 17, 2024

TO ALL BIDDERS:

This Addendum #3 is hereby made a part of the Contract Documents on which a Subcontract Order Agreement will be based, and it is issued to modify, explain, and/or correct the original Contract Documents.

Receipt of this Addendum must be acknowledged in writing on the proposal form.

#### **I. GENERAL**

- a. For bidders/subcontractors/vendors interested in another site visit, there will be another opportunity to visit the site **Friday, December 20, 2024 between 9:00 – 11:00AM.** Coordinate visit in advance by email notification to [jpavlus@ullimanschutte.com](mailto:jpavlus@ullimanschutte.com).
- b. The Pre-Bid Meeting and Sign-in Sheet is attached.

#### **II. CHANGES TO SPECIFICATIONS**

- a. **Specification 01 14 16 – 1.6.D.1.a:**
  - i. **Replace** “vi. Cleaning and inspection of existing grit chamber and HeadCell® grit removal system.” **With** “vi. Contractor is responsible for constructing the new Grit Bypass Channel at the existing headworks structure (Series 11 Drawings) and cleaning the existing grit chamber within 365 days after the date of the Notice to Proceed.”
- b. **Specification 01 14 16 – 1.6.D.1.a:**
  - i. **Replace** “vii. Replacement of stacked grit trays as required.” **With** “vii. Contractor to remove existing HeadCell® grit separator trays and conduct an inspection (along with a manufacturer’s representative) of all components of the HeadCell® unit. If it is determined that the grit trays, or other system components, require replacement, a change order will be negotiated for this additional work.”

#### **III. CHANGES TO CONTRACT DRAWINGS**

- a. None

#### **IV. CHANGES TO BID PACKAGE DOCUMENTS**

- a. None

#### **V. QUESTIONS AND ANSWERS**

- a. None

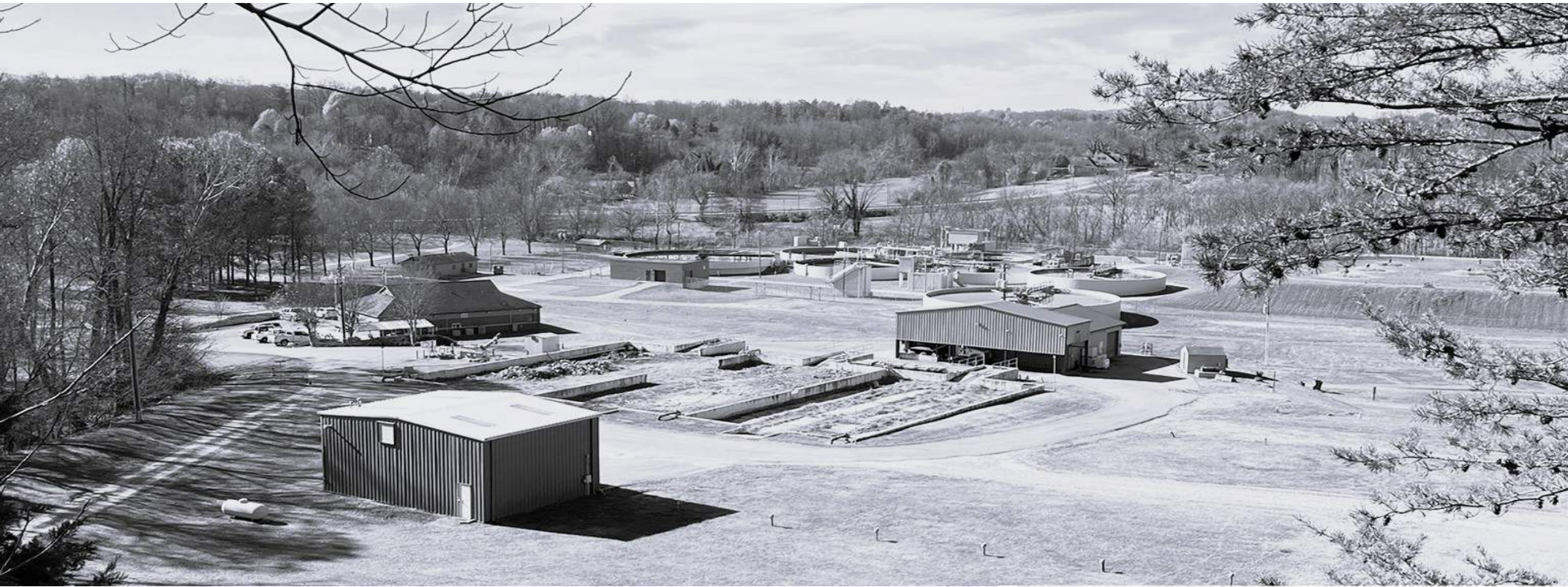
END OF ADDENDUM #3



# WILKESBORO WWTP EXPANSION

Pre-Bid Meeting and Sign-in Sheet

# PRE BID CONFERENCE



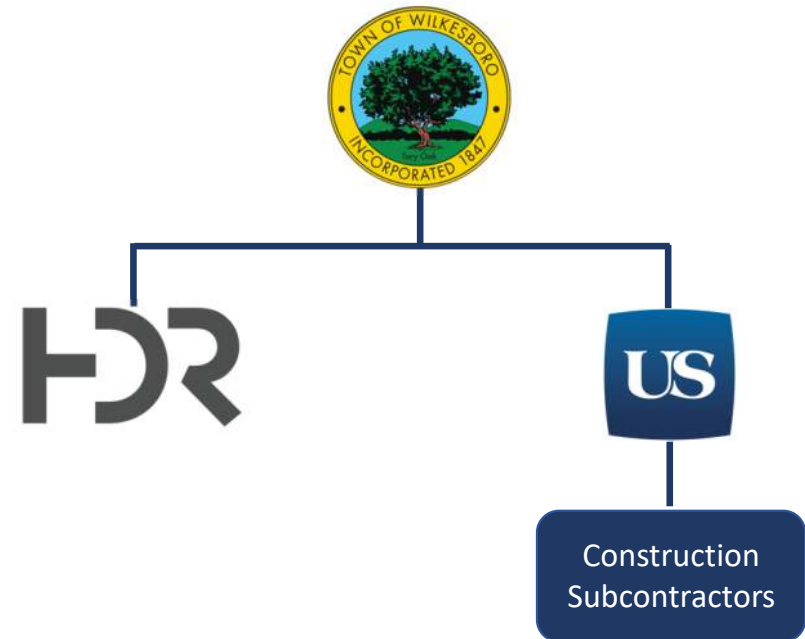
**TOWN OF WILKESBORO  
WILKESBORO WWTP EXPANSION  
CMAR Project**



**DECEMBER 4, 2024**

# Introductions

1. Construction Manager At-Risk – USC
2. Design Engineer – HDR
3. Owner – Town of Wilkesboro



# Housekeeping

---

1. Sign in before leaving the meeting. Please write your name, email, and company name on the sign in sheet.

# The Bid Process – Key Dates

- November 15, 2024 – Project Advertisement on Building Connected
- December 4, 2024 – Pre-Bid Conference and Site Visit (Non-Mandatory)
  - Conference Location – 1241 School Street, Wilkesboro, NC 28697
  - Site Visit Location – 700 Snyder Street, Wilkesboro, NC 28697
- Clarifications & Questions Due (Submit in writing to [jpavlus@ullimanschutte.com](mailto:jpavlus@ullimanschutte.com))
  - January 2, 2025, at 5pm
  - Only written responses are deemed binding.
- Bids Due on Building Connected
  - January 9, 2025, at 2pm
  - Submit via Building Connected Bid Form with required Supporting documents uploaded
  - Public Bid Opening will be hosted via Microsoft Teams 15 minutes after bids are due. A link for bid opening will be provided via addendum.

# GMP Bid Packages

- **BID PACKAGE 01**
  - All work for the Wilkesboro WWTP Expansion Project excluding work associated with Bid Package 03 and Bid Package 07
  - Bid Alternate 01 – Flow Equalization Pump Station (Drawing Series 13)
  - Bid Alternate 02 – Additional Screw Press and Polymer Blending System Install
    - Removed Supply Via Addendum No. 01.
  - Bid Alternate 03 – Deduct Offer if awarded both BP-01 and BP-07
- **BID PACKAGE 03**
  - Electrical Subcontractor
- **BID PACKAGE 07**
  - Control Building (Drawings Series 91)
- **SCOPE OF SUPPLY ITEMS EXCLUDED FROM BID PACKAGES**
  - Aqua-Nereda Scope of Supply (Specification Section 46 43 30)
  - Piedmont Controls Scope of Supply (Instrumentation, SCADA Configuration, System Integration, etc.)
  - Duke Energy Scope of Supply
  - Dewatering Screw Press Scope of Supply (Specification Section 46 76 27)
    - Added Via Addendum No. 01

# PRE QUALIFIED SUBCONTRACTORS

- BID PACKAGE 01
  - English Construction
  - Harper General Contractors
  - Shook Construction
  - Wharton Smith, Inc.
  - PC Construction
  
- BID PACKAGE 03
  - Sinns and Thomas Electrical Contractors
  - Pyramid Electric
  - Duncan Electric
  - Wayne J Griffith Inc.
  
- BID PACKAGE 07
  - Cubic Inc.
  - Bobbitt Construction
  - Harper General Contractors
  - Shook Construction
  - PC Construction



# Project Information

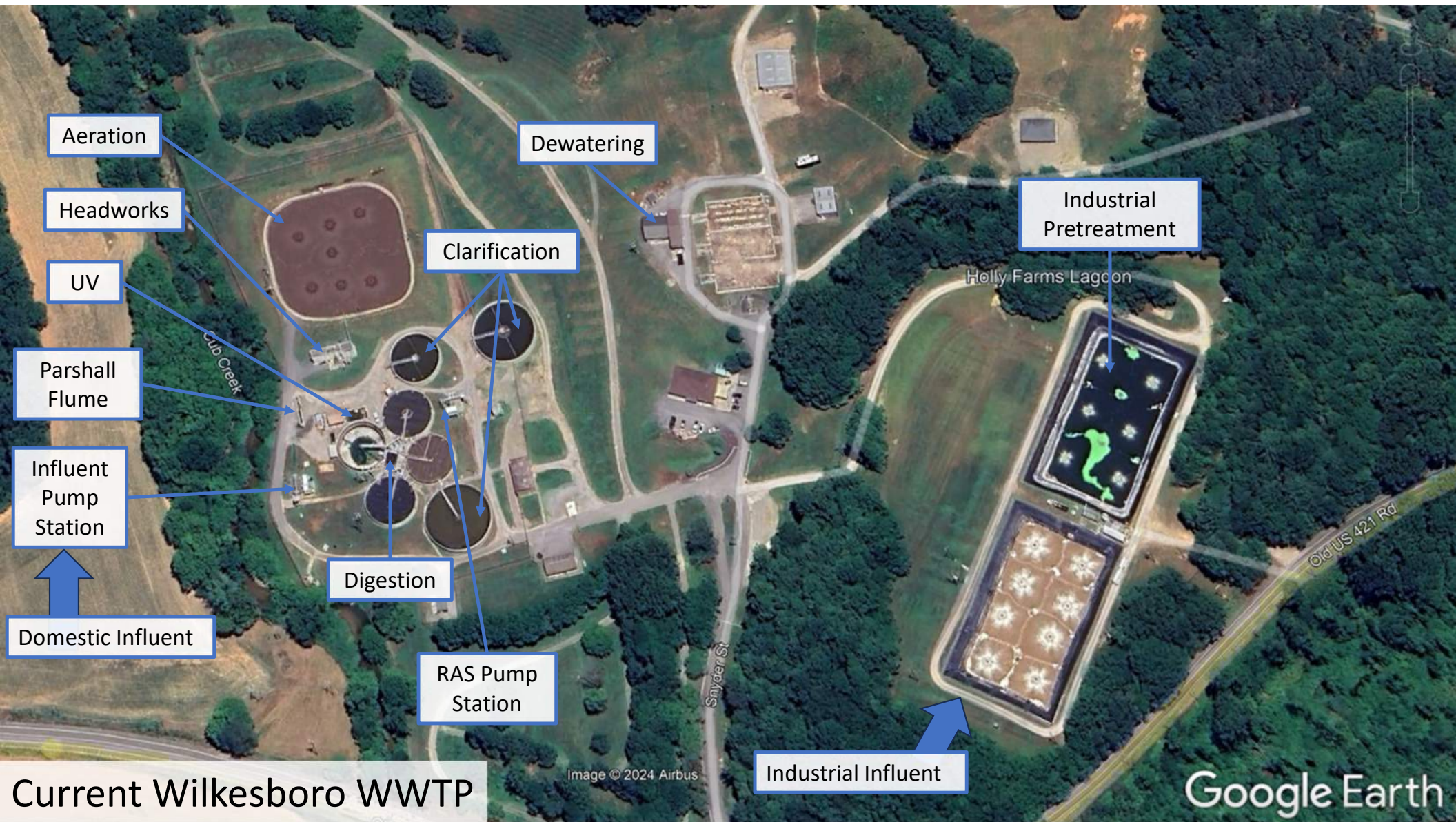
---

- All Contractors and Subs Required to register on SAM.gov and prove/maintain active status
- All selected Contractors for each Bid Package will be required to sign an NDA with Aqua-Nereda
- Prevailing Wage Project
  - Appendix J
- MBE/WBE Participation Goals
  - Appendix I

# The Bid Process – Preparing a Bid

---

- Review Contract Documents, Bid Packages, and Reference Documents on Building Connected
- Bids shall be good for 120 calendar days
- Required Bid Documents
  1. Signed Bid Form, Addenda Acknowledgment
  2. Completed Subcontractor Listing Form
  3. Completed Manufacturer Listing Form
  4. Executed Bid Bond
  5. Evidence of authorized signature
  6. MBE/WBE Compliance Documents
  7. Any other document included in the Contract Documents requiring completion or execution by the Bidder



Aeration

Dewatering

Headworks

Industrial Pretreatment

UV

Clarification

Holly Farms Lagoon

Parshall Flume

Cub Creek

Influent Pump Station

Digestion

RAS Pump Station

Old US 421 Rd

Domestic Influent

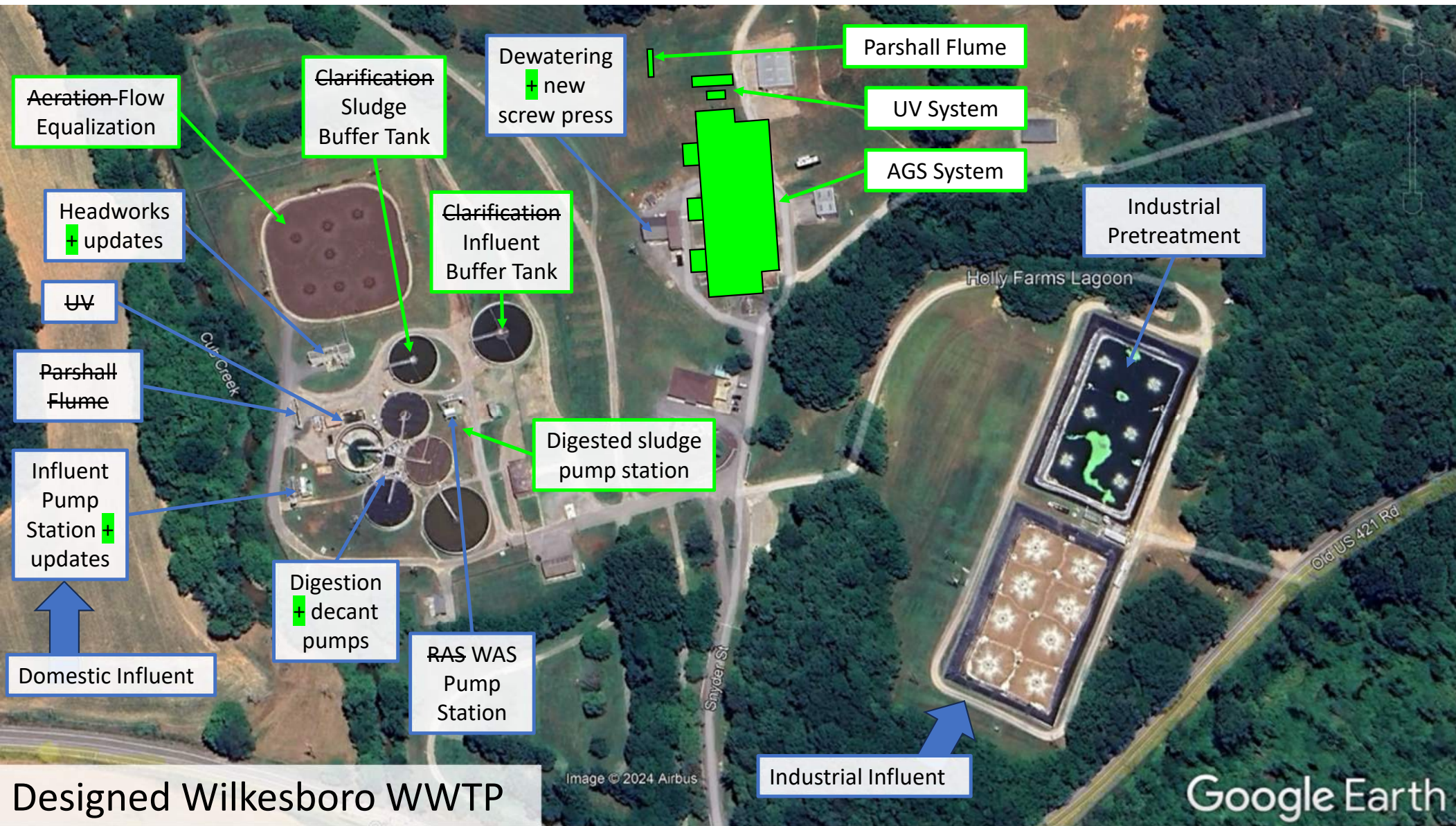
Industrial Influent

Snyder St

Image © 2024 Airbus

Google Earth

Current Wilkesboro WWTP



Aeration-Flow Equalization

Clarification Sludge Buffer Tank

Dewatering + new screw press

Parshall Flume

UV System

AGS System

Industrial Pretreatment

Headworks + updates

Clarification Influent Buffer Tank

Holly Farms Lagoon

UV

Parshall Flume

Digested sludge pump station

Influent Pump Station + updates

Digestion + decant pumps

RAS WAS Pump Station

Domestic Influent

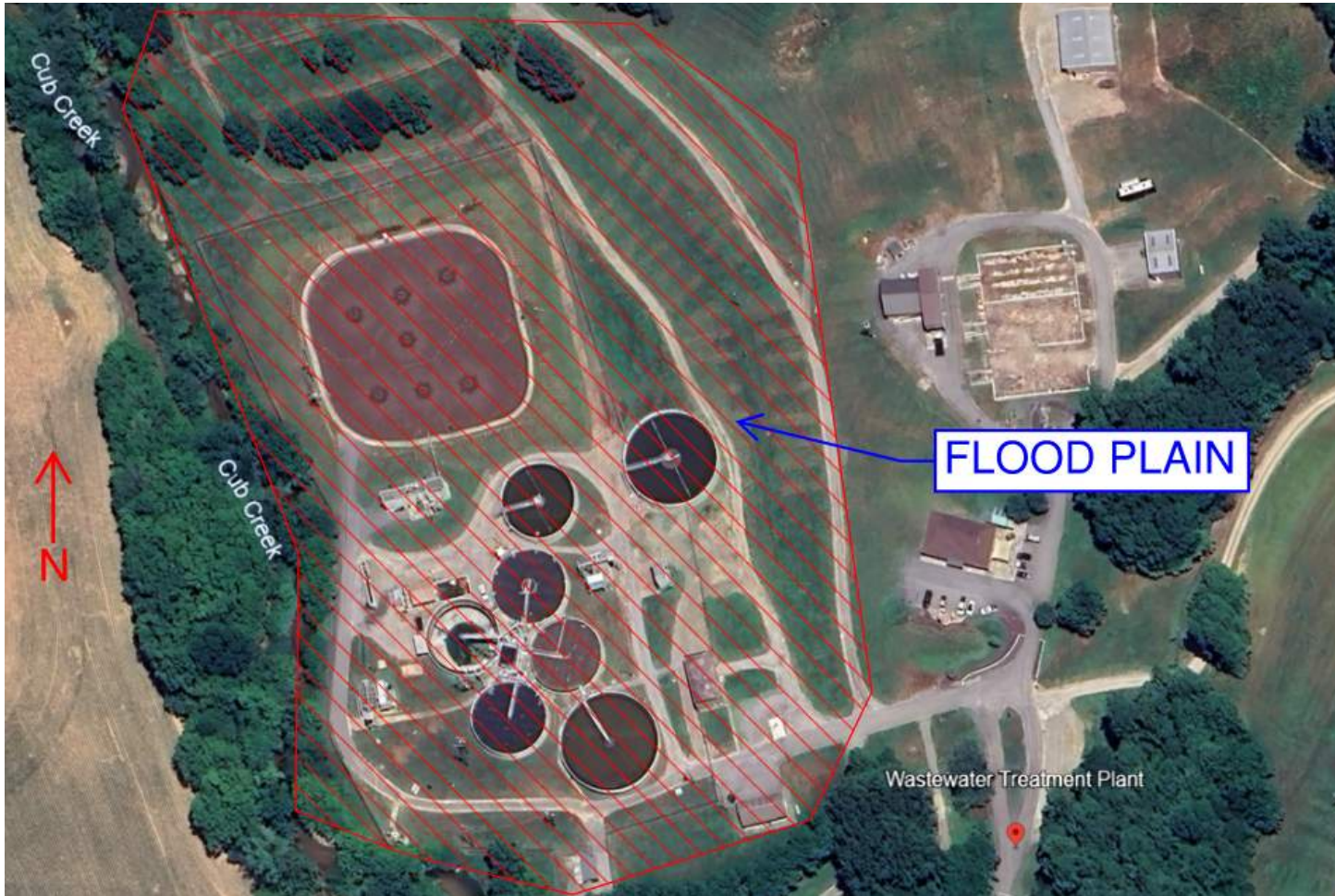
Industrial Influent

Designed Wilkesboro WWTP

Image © 2024 Airbus

Google Earth

# FLOOD PLAIN



# Recent Site Flooding – Hurricane Helene



# Major Expansion Technology: Aerobic Granular Sludge Process

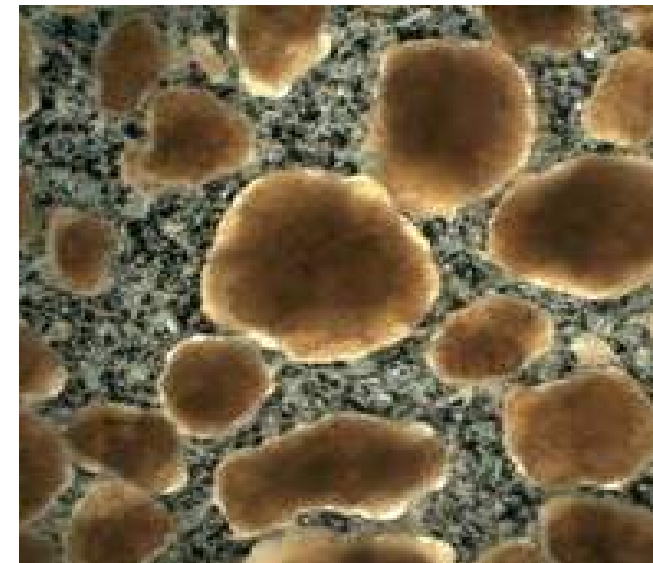
- Hybrid SBR system
- Smaller footprint
- Energy savings
- Reduced chemical dosing requirements



AGS System in Wolcott, KS

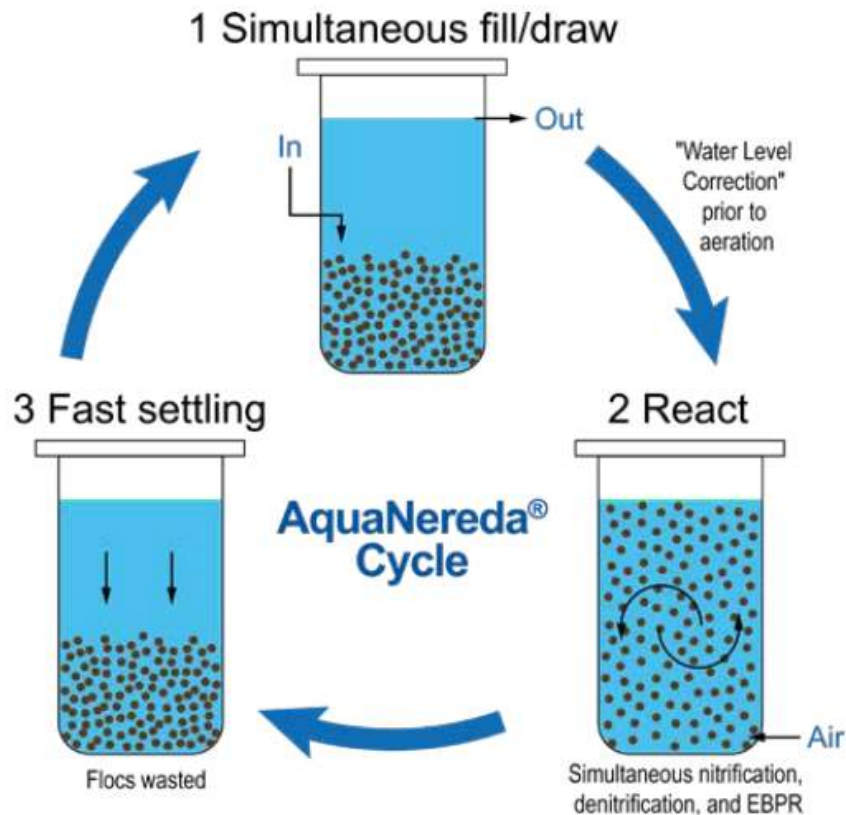


Aeration during react phase



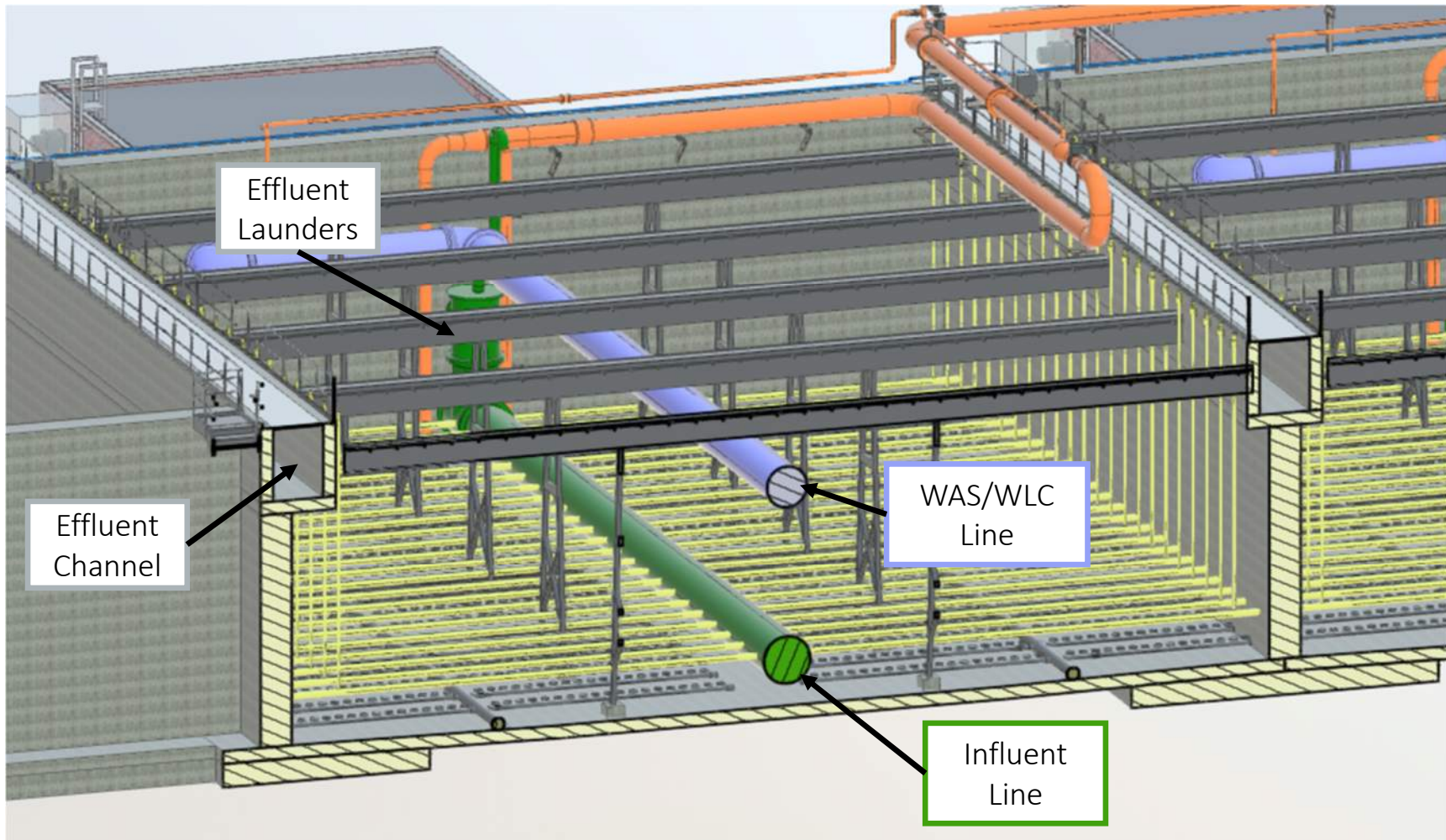
AGS Granules

# Aerobic Granular Sludge (AGS) Process



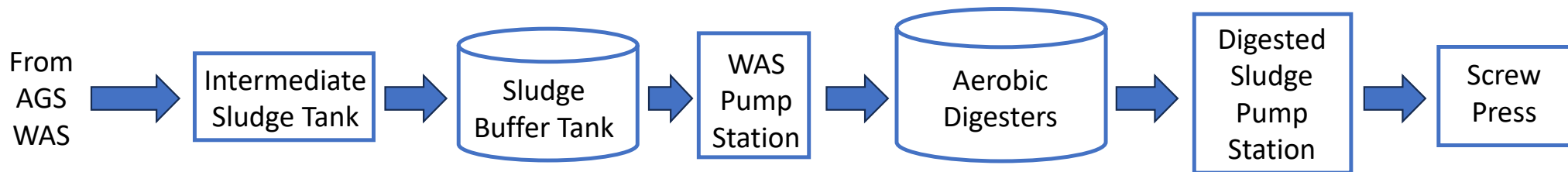
- Hybrid SBR system with simultaneous fill/draw
- Settling stage within the tank eliminates the need for secondary clarifiers
- Wilkesboro WWTP will have three AGS basins.

# Inside the AGS Basin



# Solids Treatment Train

- Intermediate sludge tank included in new AGS system construction
- Clarifier #3 to be repurposed as sludge buffer tank

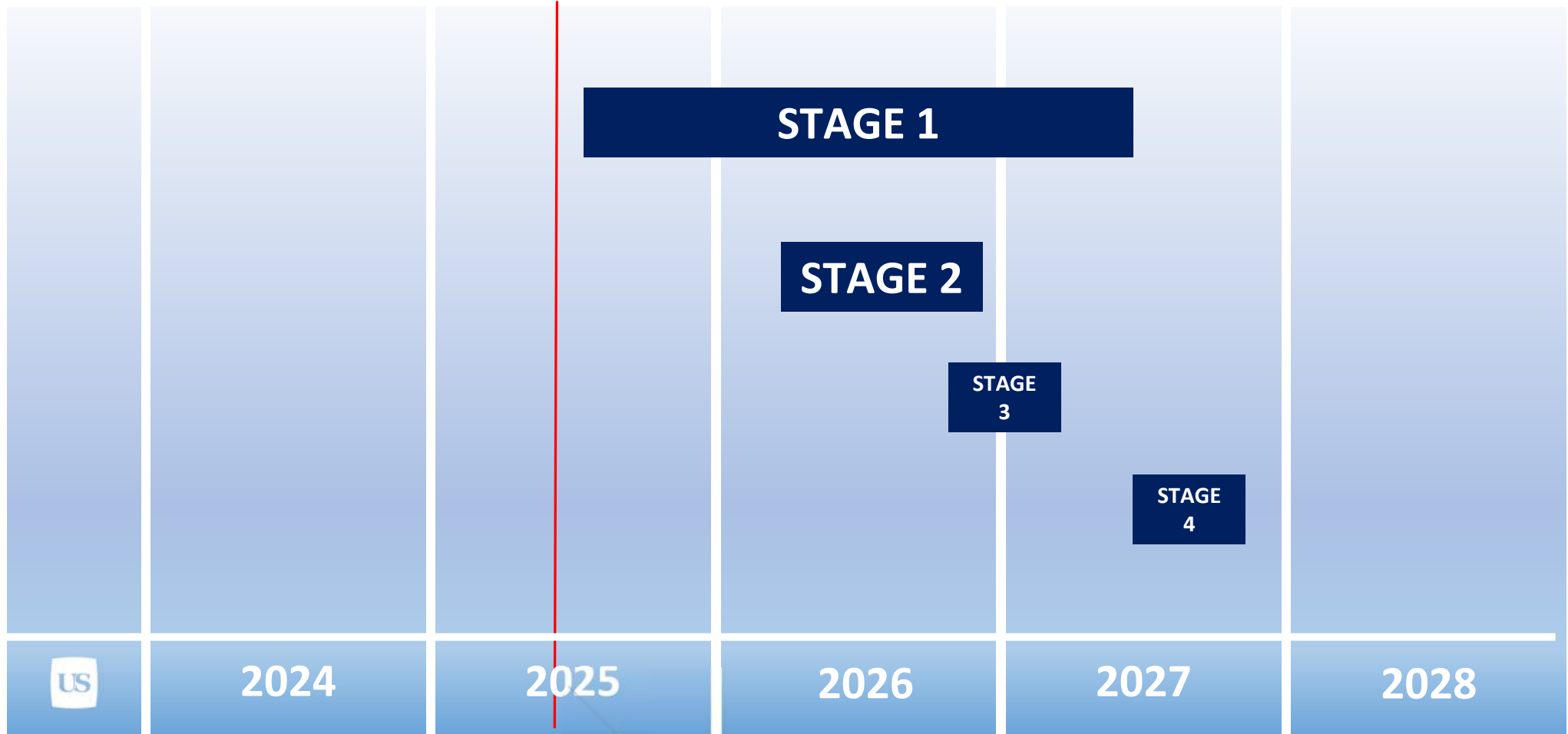


# SEQUENCE OF WORK

---

- STAGE 1
  - AGS Basins - Drawing Series 20
  - Influent Buffer Tank (Repurposed Clarifier 4) – Drawing Series 15
  - Control Building – Drawing Series 91
  - UV Disinfection – Series 40
  - Effluent Flow Monitoring – Drawing Series 50
  - WAS Pump Station – Drawings Series 70
  - Electrical Buildings No. 1 and No. 2 – Drawing Series 41 and 75
- STAGE 2
  - Headworks – Drawing Series 11
  - Influent Pump Station – Drawing Series 08
- STAGE 3
  - Solids Dewatering Facility – Drawing Series 80
- STAGE 4
  - AGS System Start Up and Decommissioning of Existing Aeration Basin
  - Decommission RAS Pumps and Install New Electrical Improvements at WAS Pump Station

# General Project Schedule



# SITE VISIT LOGISTICS



# Thank You!

Please submit all questions to:  
[jpavlus@ullimanschutte.com](mailto:jpavlus@ullimanschutte.com)

Michael Hayes  
[mhayes@ullimanschutte.com](mailto:mhayes@ullimanschutte.com)  
610-462-1328



ULLIMAN SCHUTTE



