

# SPCC\_Braswell & MU Predictive



Name: **SPCC\_Predictive\_TFC\_BRSW\_MAIN**

Location:

Responsible Person:

## SPCC\_Braswell & MU Predictive

Project description

# Braswell-Upcoming 6

## Survey routes and Access Points for Braswell-Upcoming 6



View as / Project Offset:	Measured
---------------------------	----------

### Area-2 (42,860 ft²)

Coverage Requirement: Ekahau Best Practices		
2.4 GHz	Signal Strength Min	-67.0 dBm
	Signal-to-Noise Ratio Min	20.0 dB
	Data Rate Min	24 Mbps
	Channel Interference Max	2 at min. -85.0 dBm
	Round Trip Time (RTT) Max	200 ms
	Packet Loss Max	0.0 %
5 GHz	Signal Strength Min	-67.0 dBm

SPCC\_Braswell & MU Predictive

	Secondary Signal Strength Min <b>-67.0 dBm</b> Signal-to-Noise Ratio Min <b>25.0 dB</b> Data Rate Min <b>24 Mbps</b> Channel Interference Max <b>1 at min. -85.0 dBm</b> Round Trip Time (RTT) Max <b>200 ms</b> Packet Loss Max <b>0.0 %</b>
<b>6 GHz</b>	Signal Strength Min <b>-67.0 dBm</b> Secondary Signal Strength Min <b>-67.0 dBm</b> Signal-to-Noise Ratio Min <b>25.0 dB</b> Data Rate Min <b>24 Mbps</b> Channel Interference Max <b>1 at min. -85.0 dBm</b> Round Trip Time (RTT) Max <b>200 ms</b> Packet Loss Max <b>0.0 %</b>
<b>Capacity Requirement</b>	No capacity devices for this area
<b>Notes</b>	

**Area-3 (4,888 ft<sup>2</sup>)**

Coverage Requirement: <b>Ekahau Best Practices</b>	
<b>2.4 GHz</b>	Signal Strength Min <b>-67.0 dBm</b> Signal-to-Noise Ratio Min <b>20.0 dB</b> Data Rate Min <b>24 Mbps</b> Channel Interference Max <b>2 at min. -85.0 dBm</b> Round Trip Time (RTT) Max <b>200 ms</b> Packet Loss Max <b>0.0 %</b>
<b>5 GHz</b>	Signal Strength Min <b>-67.0 dBm</b> Secondary Signal Strength Min <b>-67.0 dBm</b> Signal-to-Noise Ratio Min <b>25.0 dB</b> Data Rate Min <b>24 Mbps</b> Channel Interference Max <b>1 at min. -85.0 dBm</b>

## SPCC\_Braswell & MU Predictive

	Round Trip Time (RTT) Max	<b>200 ms</b>
	Packet Loss Max	<b>0.0 %</b>
<b>6 GHz</b>	Signal Strength Min	<b>-67.0 dBm</b>
	Secondary Signal Strength Min	<b>-67.0 dBm</b>
	Signal-to-Noise Ratio Min	<b>25.0 dB</b>
	Data Rate Min	<b>24 Mbps</b>
	Channel Interference Max	<b>1 at min. -85.0 dBm</b>
	Round Trip Time (RTT) Max	<b>200 ms</b>
	Packet Loss Max	<b>0.0 %</b>
<b>Capacity Requirement</b>	No capacity devices for this area	
<b>Notes</b>		

## Signal Strength for Braswell-Upcoming 6 on 2.4 GHz band

Signal Strength - sometimes called coverage - is the most basic requirement for a wireless network. As a general guideline, low signal strength means unreliable connections, and low data throughput.



### Signal Strength for Braswell-Upcoming 6 on 5 GHz band

Signal Strength - sometimes called coverage - is the most basic requirement for a wireless network. As a general guideline, low signal strength means unreliable connections, and low data throughput.





## Secondary Signal Strength for Braswell-Upcoming 6 on 5 GHz band

Secondary Signal Strength shows the second strongest RSSI on any given location on the map. This heatmap helps to ensure smooth roaming for clients and quality of service for certain latency-sensitive applications, such as VoIP calls.



### Tertiary Signal Strength for Braswell-Upcoming 6 on 2.4 GHz band

Tertiary Signal Strength is used to display the third strongest RSSI on any given point of the map. Tertiary Signal is mostly used to ensure sufficient quality of service for certain specialized services, such as Real-time Location (RTLS) applications.



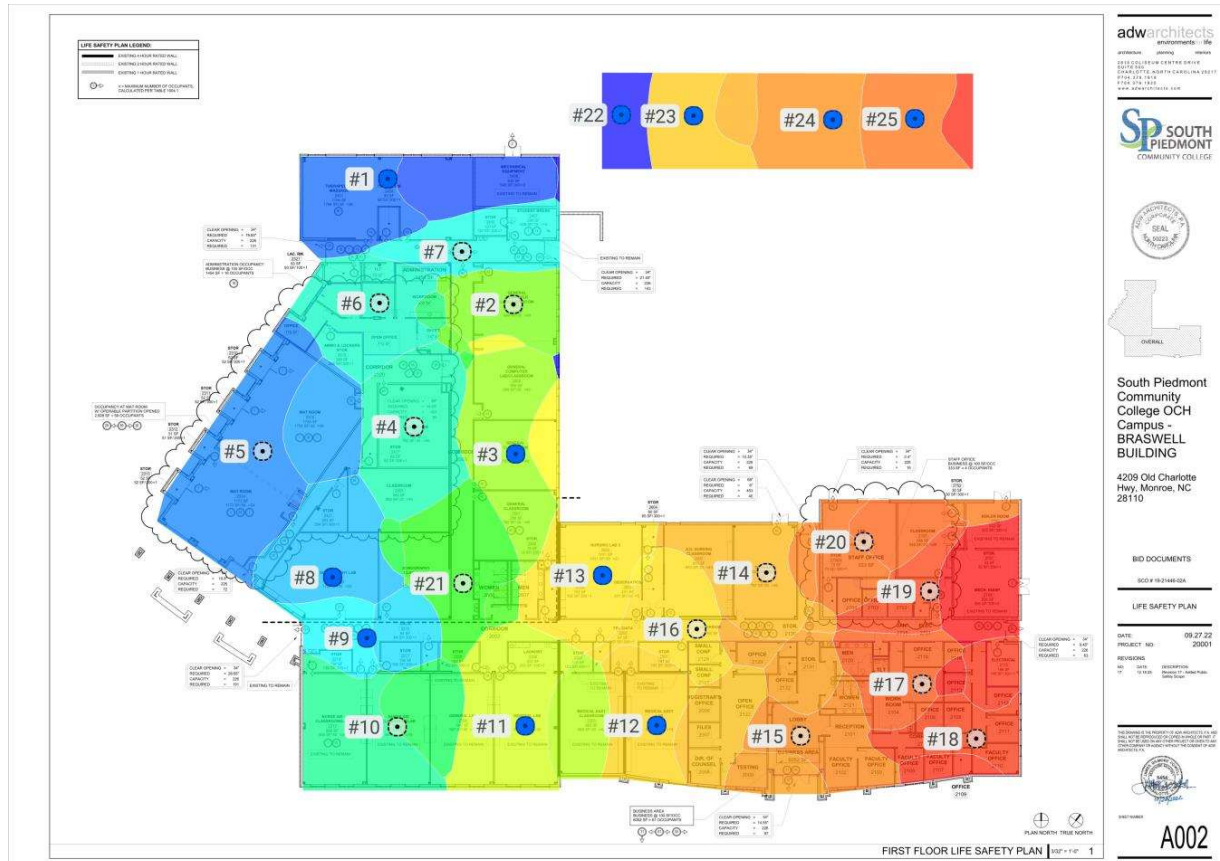






### Associated Access Point for Braswell-Upcoming 6

Displays the access point the client device is associated with. The image shows Predicted Association - Signal Strength



**adwarchitects**  
 architects inc.  
 2512 COLLEGE CENTER DRIVE  
 CHARLOTTE, NORTH CAROLINA 28217  
 770.274.1142  
 WWW.ADWARCHITECTS.COM

**SP SOUTH PIEDMONT COMMUNITY COLLEGE**

South Piedmont Community College OCH Campus - BRASWELL BUILDING  
 4209 Old Charlotte Hwy, Monroe, NC 28110

BID DOCUMENTS  
 SC01924862A

LIFE SAFETY PLAN

DATE: 09/27/22  
 PROJECT NO: 20001

REVISIONS

**A002**



AP #	Access Point		
1	Simulated AP-001		Meraki MR46
	●Wi-Fi 6	6	6 mW
	●Wi-Fi 6	56	25 mW
	Bluetooth	-	1 mW
2	Simulated AP-002		Meraki MR46

SPCC\_Braswell & MU Predictive

	●Wi-Fi 6	1	6 mW	Meraki MR46 2.4GHz
	●Wi-Fi 6	153	25 mW	Meraki MR46 5GHz
	Bluetooth	-	1 mW	Meraki MR46 BLE
3	Simulated AP-003		Meraki MR46	
	●Wi-Fi 6	6	6 mW	Meraki MR46 2.4GHz
	●Wi-Fi 6	165	25 mW	Meraki MR46 5GHz
	Bluetooth	-	1 mW	Meraki MR46 BLE
4	Simulated AP-004		Meraki MR46	
	●Wi-Fi 6	11	6 mW	Meraki MR46 2.4GHz
	●Wi-Fi 6	64	25 mW	Meraki MR46 5GHz
	Bluetooth	-	1 mW	Meraki MR46 BLE
5	Simulated AP-005		Meraki MR46	
	●Wi-Fi 6	1	6 mW	Meraki MR46 2.4GHz
	●Wi-Fi 6	144	25 mW	Meraki MR46 5GHz
	Bluetooth	-	1 mW	Meraki MR46 BLE
6	Simulated AP-006		Meraki MR46	
	●Wi-Fi 6	6	6 mW	Meraki MR46 2.4GHz
	●Wi-Fi 6	40	25 mW	Meraki MR46 5GHz
	Bluetooth	-	1 mW	Meraki MR46 BLE
7	Simulated AP-007		Meraki MR46	
	●Wi-Fi 6	11	6 mW	Meraki MR46 2.4GHz
	●Wi-Fi 6	161	25 mW	Meraki MR46 5GHz
	Bluetooth	-	1 mW	Meraki MR46 BLE
8	Simulated AP-008		Meraki MR46	
	●Wi-Fi 6	11	6 mW	Meraki MR46 2.4GHz
	●Wi-Fi 6	52	25 mW	Meraki MR46 5GHz
	Bluetooth	-	1 mW	Meraki MR46 BLE
9	Simulated AP-009		Meraki MR46	

SPCC\_Braswell & MU Predictive

	●Wi-Fi 6	6	6 mW	Meraki MR46 2.4GHz
	●Wi-Fi 6	112	25 mW	Meraki MR46 5GHz
	Bluetooth	-	1 mW	Meraki MR46 BLE
10	Simulated AP-010		Meraki MR46	
	●Wi-Fi 6	1	6 mW	Meraki MR46 2.4GHz
	●Wi-Fi 6	104	25 mW	Meraki MR46 5GHz
	Bluetooth	-	1 mW	Meraki MR46 BLE
11	Simulated AP-011		Meraki MR46	
	●Wi-Fi 6	11	6 mW	Meraki MR46 2.4GHz
	●Wi-Fi 6	140	25 mW	Meraki MR46 5GHz
	Bluetooth	-	1 mW	Meraki MR46 BLE
12	Simulated AP-012		Meraki MR46	
	●Wi-Fi 6	1	6 mW	Meraki MR46 2.4GHz
	●Wi-Fi 6	157	25 mW	Meraki MR46 5GHz
	Bluetooth	-	1 mW	Meraki MR46 BLE
13	Simulated AP-013		Meraki MR46	
	●Wi-Fi 6	11	6 mW	Meraki MR46 2.4GHz
	●Wi-Fi 6	100	25 mW	Meraki MR46 5GHz
	Bluetooth	-	1 mW	Meraki MR46 BLE
14	Simulated AP-014		Meraki MR46	
	●Wi-Fi 6	1	6 mW	Meraki MR46 2.4GHz
	●Wi-Fi 6	60	25 mW	Meraki MR46 5GHz
	Bluetooth	-	1 mW	Meraki MR46 BLE
15	Simulated AP-015		Meraki MR46	
	●Wi-Fi 6	11	6 mW	Meraki MR46 2.4GHz
	●Wi-Fi 6	108	25 mW	Meraki MR46 5GHz
	Bluetooth	-	1 mW	Meraki MR46 BLE
16	Simulated AP-016		Meraki MR46	

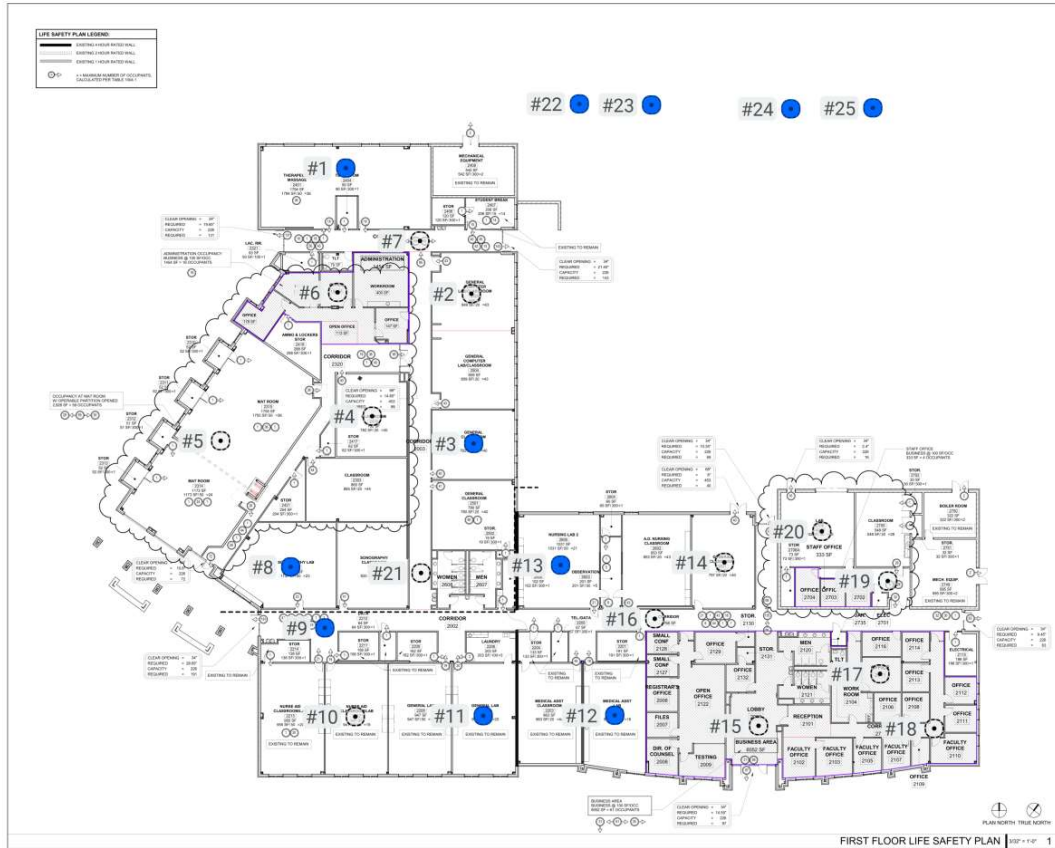
SPCC\_Braswell & MU Predictive

	● Wi-Fi 6	6	6 mW	Meraki MR46 2.4GHz
	● Wi-Fi 6	44	25 mW	Meraki MR46 5GHz
	Bluetooth	-	1 mW	Meraki MR46 BLE
17	Simulated AP-017		Meraki MR46	
	● Wi-Fi 6	6	6 mW	Meraki MR46 2.4GHz
	● Wi-Fi 6	48	25 mW	Meraki MR46 5GHz
	Bluetooth	-	1 mW	Meraki MR46 BLE
18	Simulated AP-018		Meraki MR46	
	● Wi-Fi 6	11	6 mW	Meraki MR46 2.4GHz
	● Wi-Fi 6	153	25 mW	Meraki MR46 5GHz
	Bluetooth	-	1 mW	Meraki MR46 BLE
19	Simulated AP-019		Meraki MR46	
	● Wi-Fi 6	1	6 mW	Meraki MR46 2.4GHz
	● Wi-Fi 6	56	25 mW	Meraki MR46 5GHz
	Bluetooth	-	1 mW	Meraki MR46 BLE
20	Simulated AP-020		Meraki MR46	
	● Wi-Fi 6	11	6 mW	Meraki MR46 2.4GHz
	● Wi-Fi 6	149	25 mW	Meraki MR46 5GHz
	Bluetooth	-	1 mW	Meraki MR46 BLE
21	Simulated AP-021		Meraki MR46	
	● Wi-Fi 6	1	6 mW	Meraki MR46 2.4GHz
	● Wi-Fi 6	36	25 mW	Meraki MR46 5GHz
	Bluetooth	-	1 mW	Meraki MR46 BLE
22	Simulated AP-022		Meraki MR46	
	● Wi-Fi 6	1	6 mW	Meraki MR46 2.4GHz
	● Wi-Fi 6	36	25 mW	Meraki MR46 5GHz
	Bluetooth	-	1 mW	Meraki MR46 BLE
23	Simulated AP-023		Meraki MR46	

## SPCC\_Braswell & MU Predictive

	● Wi-Fi 6	1	6 mW	Meraki MR46 2.4GHz
	● Wi-Fi 6	36	25 mW	Meraki MR46 5GHz
	Bluetooth	-	1 mW	Meraki MR46 BLE
24	Simulated AP-025		Meraki MR46	
	● Wi-Fi 6	1	6 mW	Meraki MR46 2.4GHz
	● Wi-Fi 6	36	25 mW	Meraki MR46 5GHz
	Bluetooth	-	1 mW	Meraki MR46 BLE
25	Simulated AP-026		Meraki MR46	
	● Wi-Fi 6	1	6 mW	Meraki MR46 2.4GHz
	● Wi-Fi 6	36	25 mW	Meraki MR46 5GHz
	Bluetooth	-	1 mW	Meraki MR46 BLE

# Access Points on Braswell-Upcoming 6



adwarchitects  
environments | life  
advisors | planning | design  
1615 COLLEGE CENTER DRIVE  
CHARLOTTE NORTH CAROLINA 28217  
704.374.7444  
WWW.ADWARCHITECTS.COM



South Piedmont  
Community  
College OCH  
Campus -  
BRASWELL  
BUILDING  
4209 Old Charlotte  
Hay, Monroe, NC  
28110

BID DOCUMENTS  
SECTION 05200

LIFE SAFETY PLAN

DATE: 09/27/22  
PROJECT NO: 20001  
REVISIONS:  
NO. DATE DESCRIPTION  
1 09/27/22 1.000 1.000



A002

## My Access Points on Braswell-Upcoming 6

### Simulated Access Points on Braswell-Upcoming 6

AP #	Access Point		
1	Simulated AP-001		Meraki MR46
	Wi-Fi 6	6	6 mW
	Wi-Fi 6	56	25 mW
	Bluetooth	-	1 mW
2	Simulated AP-002		Meraki MR46
	Wi-Fi 6	1	6 mW
	Wi-Fi 6	153	25 mW
	Bluetooth	-	1 mW
3	Simulated AP-003		Meraki MR46
	Wi-Fi 6	6	6 mW
	Wi-Fi 6	165	25 mW
	Bluetooth	-	1 mW
4	Simulated AP-004		Meraki MR46
	Wi-Fi 6	11	6 mW
	Wi-Fi 6	64	25 mW
	Bluetooth	-	1 mW
5	Simulated AP-005		Meraki MR46
	Wi-Fi 6	1	6 mW
	Wi-Fi 6	144	25 mW
	Bluetooth	-	1 mW
6	Simulated AP-006		Meraki MR46
	Wi-Fi 6	6	6 mW
	Wi-Fi 6	40	25 mW
	Bluetooth	-	1 mW
7	Simulated AP-007		Meraki MR46
	Wi-Fi 6	11	6 mW
	Wi-Fi 6	161	25 mW

SPCC\_Braswell & MU Predictive

	Bluetooth	-	1 mW	Meraki MR46 BLE
8	Simulated AP-008		Meraki MR46	
	Wi-Fi 6	11	6 mW	Meraki MR46 2.4GHz
	Wi-Fi 6	52	25 mW	Meraki MR46 5GHz
	Bluetooth	-	1 mW	Meraki MR46 BLE
9	Simulated AP-009		Meraki MR46	
	Wi-Fi 6	6	6 mW	Meraki MR46 2.4GHz
	Wi-Fi 6	112	25 mW	Meraki MR46 5GHz
	Bluetooth	-	1 mW	Meraki MR46 BLE
10	Simulated AP-010		Meraki MR46	
	Wi-Fi 6	1	6 mW	Meraki MR46 2.4GHz
	Wi-Fi 6	104	25 mW	Meraki MR46 5GHz
	Bluetooth	-	1 mW	Meraki MR46 BLE
11	Simulated AP-011		Meraki MR46	
	Wi-Fi 6	11	6 mW	Meraki MR46 2.4GHz
	Wi-Fi 6	140	25 mW	Meraki MR46 5GHz
	Bluetooth	-	1 mW	Meraki MR46 BLE
12	Simulated AP-012		Meraki MR46	
	Wi-Fi 6	1	6 mW	Meraki MR46 2.4GHz
	Wi-Fi 6	157	25 mW	Meraki MR46 5GHz
	Bluetooth	-	1 mW	Meraki MR46 BLE
13	Simulated AP-013		Meraki MR46	
	Wi-Fi 6	11	6 mW	Meraki MR46 2.4GHz
	Wi-Fi 6	100	25 mW	Meraki MR46 5GHz
	Bluetooth	-	1 mW	Meraki MR46 BLE
14	Simulated AP-014		Meraki MR46	
	Wi-Fi 6	1	6 mW	Meraki MR46 2.4GHz
	Wi-Fi 6	60	25 mW	Meraki MR46 5GHz
	Bluetooth	-	1 mW	Meraki MR46 BLE
15	Simulated AP-015		Meraki MR46	

SPCC\_Braswell & MU Predictive

	Wi-Fi 6	11	6 mW	Meraki MR46 2.4GHz
	Wi-Fi 6	108	25 mW	Meraki MR46 5GHz
	Bluetooth	-	1 mW	Meraki MR46 BLE
16	Simulated AP-016		Meraki MR46	
	Wi-Fi 6	6	6 mW	Meraki MR46 2.4GHz
	Wi-Fi 6	44	25 mW	Meraki MR46 5GHz
	Bluetooth	-	1 mW	Meraki MR46 BLE
17	Simulated AP-017		Meraki MR46	
	Wi-Fi 6	6	6 mW	Meraki MR46 2.4GHz
	Wi-Fi 6	48	25 mW	Meraki MR46 5GHz
	Bluetooth	-	1 mW	Meraki MR46 BLE
18	Simulated AP-018		Meraki MR46	
	Wi-Fi 6	11	6 mW	Meraki MR46 2.4GHz
	Wi-Fi 6	153	25 mW	Meraki MR46 5GHz
	Bluetooth	-	1 mW	Meraki MR46 BLE
19	Simulated AP-019		Meraki MR46	
	Wi-Fi 6	1	6 mW	Meraki MR46 2.4GHz
	Wi-Fi 6	56	25 mW	Meraki MR46 5GHz
	Bluetooth	-	1 mW	Meraki MR46 BLE
20	Simulated AP-020		Meraki MR46	
	Wi-Fi 6	11	6 mW	Meraki MR46 2.4GHz
	Wi-Fi 6	149	25 mW	Meraki MR46 5GHz
	Bluetooth	-	1 mW	Meraki MR46 BLE
21	Simulated AP-021		Meraki MR46	
	Wi-Fi 6	1	6 mW	Meraki MR46 2.4GHz
	Wi-Fi 6	36	25 mW	Meraki MR46 5GHz
	Bluetooth	-	1 mW	Meraki MR46 BLE
22	Simulated AP-022		Meraki MR46	
	Wi-Fi 6	1	6 mW	Meraki MR46 2.4GHz
	Wi-Fi 6	36	25 mW	Meraki MR46 5GHz

SPCC\_Braswell & MU Predictive

	Bluetooth	-	1 mW	Meraki MR46 BLE
23	Simulated AP-023		Meraki MR46	
	Wi-Fi 6	1	6 mW	Meraki MR46 2.4GHz
	Wi-Fi 6	36	25 mW	Meraki MR46 5GHz
	Bluetooth	-	1 mW	Meraki MR46 BLE
24	Simulated AP-025		Meraki MR46	
	Wi-Fi 6	1	6 mW	Meraki MR46 2.4GHz
	Wi-Fi 6	36	25 mW	Meraki MR46 5GHz
	Bluetooth	-	1 mW	Meraki MR46 BLE
25	Simulated AP-026		Meraki MR46	
	Wi-Fi 6	1	6 mW	Meraki MR46 2.4GHz
	Wi-Fi 6	36	25 mW	Meraki MR46 5GHz
	Bluetooth	-	1 mW	Meraki MR46 BLE

**Measured Access Points on Braswell-Upcoming 6**

None.