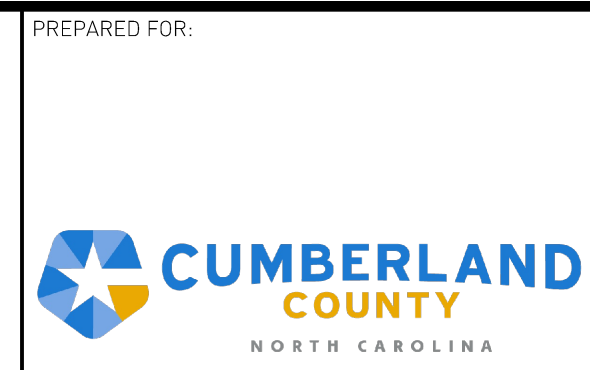


- LEGEND**
- EXISTING CONTOUR (SEE REFERENCE 1)
 - - - PROPERTY LINE (SEE REFERENCE 2)
 - - - STREAM (APPROXIMATE)
 - - - APPROXIMATE EXISTING WASTE LIMITS
 - - - LIMIT OF FUTURE WASTE PLACEMENT
 - LIMITS OF DISTURBANCE
 - LFG EXISTING LANDFILL GAS LINE (SEE REFERENCES 5, 6, & 11)
 - A EXISTING COMPRESSED AIR LINE (SEE REFERENCES 5, 6, & 11)
 - C EXISTING CONDENSATE LINE (SEE REFERENCES 5, 6, & 11)
 - AC EXISTING COMPRESSED AIR AND CONDENSATE LINE (SEE REFERENCES 5, 6, & 11)
 - FM EXISTING FORCEMAIN (SEE REFERENCES 5, 6, & 11)
 - FINAL COVER LIMITS (SEE REFERENCE 11)
 - FLOOD ZONE AE (SEE REFERENCE 9)
 - ▨ FLOODWAY (SEE REFERENCE 9)
 - ▨ WETLANDS (SEE REFERENCE 8)
- ◆ EW-720 LFG EXTRACTION WELL (SEE REFERENCE 5 & 11)
 - ◆ CW-1 LFG CAP WELL (SEE REFERENCE 5)
 - ◆ LCO5E LEACHATE CLEANOUT WELL (SEE REFERENCE 5 & 11)
 - ◆ TP-1 TEST PIT (SEE REFERENCE 4)
 - ◆ GP-1 GAS MONITORING PROBE (SEE REFERENCE 4)
 - ◆ MW-1 MONITORING WELL (SEE REFERENCE 4)
 - I-1 INJECTION WELL (SEE REFERENCE 5)
 - ▲ SW-1 STORMWATER MONITORING POINT (SEE REFERENCE 4)
 - ◆ CS-1 CONDENSATE SUMP (SEE REFERENCE 5 & 11)
 - RW-930 PROPOSED REMOTE WELLHEAD
 - T EXISTING LEACHATE COLLECTION PIPE CLEANOUT (SEE REFERENCE 5)

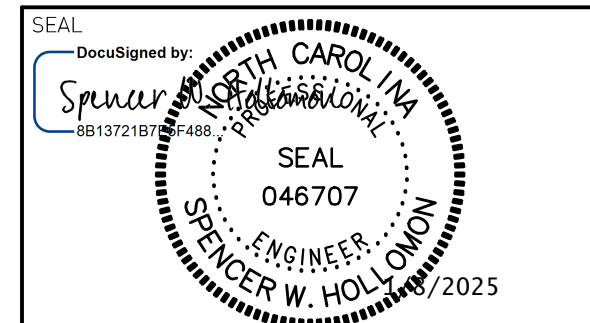
- REFERENCES**
1. SITE TOPOGRAPHY DATED MARCH 21, 2024 BY SMITH GARDNER UAS AERIAL TOPOGRAPHY.
 2. PERIMETER BOUNDARY INFORMATION DATED MAY 26, 2022 BY JOYNER KEENE, FAYETTEVILLE, NC.
 3. LANDFILL GAS WELL LOCATION PROVIDED BY SCS ENGINEERS, PC, DRAWING TITLED ANN STREET CAD LANDFILL FACILITY PLAN.
 4. TEST PIT LOCATIONS PROVIDED BY SCS ENGINEERS, P.C. DRAWING TITLED TEST PIT SITE PLAN.
 5. EXISTING LANDFILL GAS SYSTEM LOCATIONS DIGITIZED BASED ON "AS-BUILT EXISTING CONDITIONS" DATED SEPTEMBER 2019, "AS-BUILT SITE PLAN" DATED APRIL 2020; PREPARED BY SCS ENGINEERS, WITH SUPPLEMENTS FOR CAD DRAWING TITLED 2021-11-08 BLOWER AND FLARE PAD AS-BUILT MAP; PREPARED FEI CIVIL ENGINEERS AND LAND SURVEYORS, DATED OCT. 11, 2021.
 6. MCNAMEE GAS TRANSMISSION LINE FROM SURVEY CONDUCTED BY SURVEYING SOLUTIONS OF YOUNGSRVILLE, NC, DATED JUNE 21, 2022.
 7. SANITARY SEWER EASEMENT AND CUMBERLAND COUNTY UTILITY EASEMENT DIGITIZED FROM DRAWING TITLED "CAMPBELL COMPANY 20' SANITARY SEWER EASMT", PROVIDED BY THE CITY OF FAYETTEVILLE PUBLIC WORKS COMMISSION, DATED 4/7/1971.
 8. WETLANDS LOCATIONS PROVIDED BY 4D SOLUTIONS DRAWING TITLED "WETLANDS MAP OF THE ANN STREET LANDFILL", DATED APRIL 13, 2020.
 9. FLOOD PLAIN INFORMATION PROVIDED BY NORTH CAROLINA FLOOD RISK INFORMATION SYSTEM. SEE FEMA FLOODPLAIN MAP PANEL 0447, MAP NUMBER 3720044700K, DATED 06/18/07.
 10. FINAL COVER LIMITS INFORMATION PROVIDED BY SCS ENGINEERING, PC, DRAWING TITLED "FINAL GRADING PLAN", DATED MAY 2019.
 11. PROTECTIVE COVER (PCVR) ELEVATIONS FOR CELLS 1-5 BASED ON CDM DRAWING TITLED "CUMBERLAND COUNTY ANN STREET LANDFILL FACILITY PLAN", DATED JANUARY 1995; CELLS 6-8 (PCVR) ELEVATIONS BASED ON CAD DRAWING FROM CDM TITLED "C-5", DATED SEPTEMBER 2020; CELLS 9-10 (PCVR) BASED ON CAD DRAWING FROM CDM TITLED "CUMBERLAND LF FINAL ASBUILT".



PREPARED FOR: NC LIC. NO. F-1370
SC COA NO. C01488

SMITH+GARDNER ENGINEERS

114 N. Boylan Avenue, Raleigh NC 27603 | 919.828.0577
1526 Richland St., Columbia SC 29201



REV.	DATE	DESCRIPTION
2	1/8/2025	REBID

PROJECT TITLE:

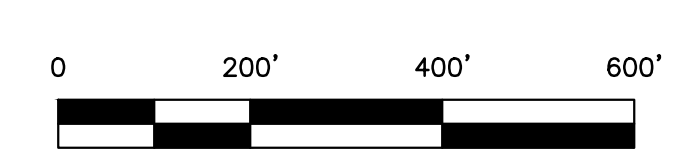
**CUMBERLAND COUNTY
ANN STREET MSW LANDFILL
LANDFILL GAS
TREATMENT SKID**

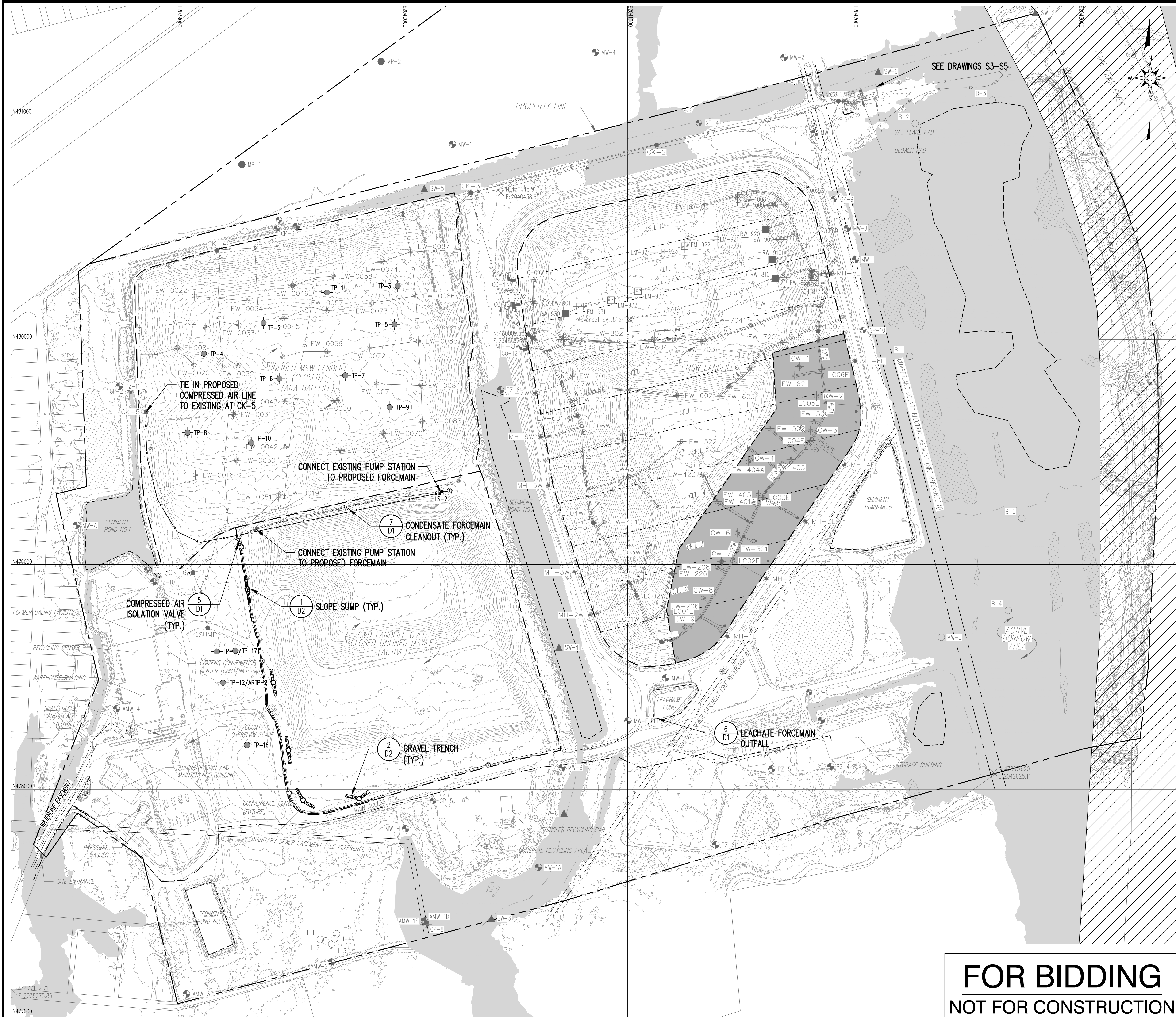
DRAWING TITLE:

EXISTING CONDITIONS

DESIGNED: S.W.H.	PROJECT NO: CUMBERLAND 24-3
DRAWN: L.H.B.	SCALE: AS SHOWN
APPROVED: SCS	DATE: OCT. 2024
FILENAME: CUMBERLAND-D0203	DRAWING NUMBER:
SHEET NUMBER: 2	S1

**FOR BIDDING
NOT FOR CONSTRUCTION**





LEGEND

- EXISTING CONTOUR (SEE REFERENCE 1)
- - - PROPERTY LINE (SEE REFERENCE 2)
- - - STREAM (APPROXIMATE)
- - - APPROXIMATE EXISTING WASTE LIMITS
- - - LIMIT OF FUTURE WASTE PLACEMENT
- LIMITS OF DISTURBANCE
- LFG EXISTING LANDFILL GAS LINE (SEE REFERENCES 5, 6, & 11)
- A EXISTING COMPRESSED AIR LINE (SEE REFERENCES 5, 6, & 11)
- C EXISTING CONDENSATE LINE (SEE REFERENCES 5, 6, & 11)
- AC EXISTING COMPRESSED AIR AND CONDENSATE LINE (SEE REFERENCES 5, 6, & 11)
- FM EXISTING FORCEMAIN (SEE REFERENCES 5, 6, & 11)
- FINAL COVER LIMITS (SEE REFERENCE 11)
- FLOOD ZONE AE (SEE REFERENCE 9)
- ▨ FLOODWAY (SEE REFERENCE 9)
- ▨ WETLANDS (SEE REFERENCE 8)

- ◆ EW-720 LFG EXTRACTION WELL (SEE REFERENCE 5 & 11)
- ◆ CW-1 LFG CAP WELL (SEE REFERENCE 5)
- ◆ LCO5E LEACHATE CLEANOUT WELL (SEE REFERENCE 5 & 11)
- ◆ TP-1 TEST PIT (SEE REFERENCE 4)
- ◆ GP-1 GAS MONITORING PROBE (SEE REFERENCE 4)
- ◆ MW-1 MONITORING WELL (SEE REFERENCE 4)
- I-1 INJECTION WELL (SEE REFERENCE 5)
- ▲ SW-1 STORMWATER MONITORING POINT (SEE REFERENCE 4)
- ◆ CS-1 CONDENSATE SUMP (SEE REFERENCE 5 & 11)
- RW-930 PROPOSED REMOTE WELLHEAD
- T EXISTING LEACHATE COLLECTION PIPE CLEANOUT (SEE REFERENCE 5)

REFERENCES

1. SITE TOPOGRAPHY DATED MARCH 21, 2024 BY SMITH GARDNER UAS AERIAL TOPOGRAPHY.
2. PERIMETER BOUNDARY INFORMATION DATED MAY 26, 2022 BY JOYNER KEENE, FAYETTEVILLE, NC.
3. LANDFILL GAS WELL LOCATION PROVIDED BY SCS ENGINEERS, PC, DRAWING TITLED ANN STREET CAD LANDFILL FACILITY PLAN.
4. TEST PIT LOCATIONS PROVIDED BY SCS ENGINEERS, P.C. DRAWING TITLED TEST PIT SITE PLAN.
5. EXISTING LANDFILL GAS SYSTEM LOCATIONS DIGITIZED BASED ON "AS-BUILT EXISTING CONDITIONS" DATED SEPTEMBER 2019, "AS-BUILT SITE PLAN" DATED APRIL 2020; PREPARED BY SCS ENGINEERS, WITH SUPPLEMENTS FOR CAD DRAWING TITLED 2021-11-08 BLOWER AND FLARE PAD AS-BUILT MAP; PREPARED FEI CIVIL ENGINEERS AND LAND SURVEYORS, DATED OCT. 11, 2021.
6. MCNAMEE GAS TRANSMISSION LINE FROM SURVEY CONDUCTED BY SURVEYING SOLUTIONS OF YOUNGVILLE, NC, DATED JUNE 21, 2022.
7. SANITARY SEWERS EASEMENT AND CUMBERLAND COUNTY UTILITY EASEMENT DIGITIZED FROM DRAWING TITLED "CAMPBELL COMPANY 20' SANITARY SEWER EASMT", PROVIDED BY THE CITY OF FAYETTEVILLE PUBLIC WORKS COMMISSION, DATED 4/7/1971.
8. WETLAND LOCATIONS PROVIDED BY 4D SOLUTIONS DRAWING TITLED "WETLANDS MAP OF THE ANN STREET LANDFILL", DATED APRIL 13, 2020.
9. FLOOD PLAIN INFORMATION PROVIDED BY NORTH CAROLINA FLOOD RISK INFORMATION SYSTEM. SEE FEMA FLOODPLAIN MAP PANEL 0447, MAP NUMBER 3720044700K, DATED 06/18/07.
10. FINAL COVER LIMITS INFORMATION PROVIDED BY SCS ENGINEERING, PC, DRAWING TITLED "FINAL GRADING PLAN", DATED MAY 2019.
11. PROTECTIVE COVER (PCVR) ELEVATIONS FOR CELLS 1-5 BASED ON GCM DRAWING TITLED "CUMBERLAND COUNTY ANN STREET LANDFILL FACILITY PLAN", DATED JANUARY 1995; CELLS 6-8 (PCVR) ELEVATIONS BASED ON CAD DRAWING FROM GCM TITLED "C-5", DATED SEPTEMBER 2020; CELLS 9-10 (PCVR) BASED ON CAD DRAWING FROM GCM TITLED "CUMBERLAND LF FINAL ASBUILT".

PREPARED FOR:

PREPARED BY: NC LIC. NO. F-1370
SC COA NO. C01488

SMITH+GARDNER ENGINEERS

14 N. Boylan Avenue, Raleigh NC 27603 | 919.828.0577
1526 Richland St., Columbia SC 29201

SEAL

REV.	DATE	DESCRIPTION
1	10/2024	ADDENDUM NO. 1
2	1/8/2025	REBID

PROJECT TITLE:

**CUMBERLAND COUNTY
ANN STREET MSW LANDFILL
LANDFILL GAS
TREATMENT SKID**

DRAWING TITLE:

SITE DEVELOPMENT PLAN

DESIGNED: S.W.H.	PROJECT NO: CUMBERLAND 24-3
DRAWN: L.H.B.	SCALE: AS SHOWN
APPROVED: SCS	DATE: OCT. 2024
FILE NAME: CUMBERLAND-D0203	DRAWING NUMBER:
SHEET NUMBER: 3	S2

**FOR BIDDING
NOT FOR CONSTRUCTION**

