

CONSTRUCTION DOCUMENTS FOR

SAMPSON COMMUNITY COLLEGE
NURSING & ALLIED HEALTH BUILDING

CLINTON, NC

SCO #24-28929-02A

JKF PROJECT NO. 2024-12

DECEMBER 1, 2025

VOLUME 1

VOLUME 1

- TITLE SHEET - VOLUME 1
- BC1.1 BUILDING CODE ANALYSIS, LEGENDS, SYMBOLS & ABBREVIATIONS
- BC1.2 LIFE SAFETY PLANS
- SURVEY OF PROPERTY BY COASTAL CAROLINA SURVEYORS, PLLC

CIVIL

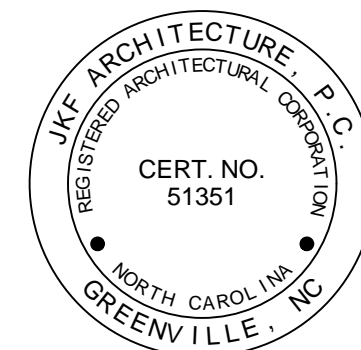
- C0.1 DEMOLITION PLAN
- C1.1 SITE PLAN
- C2.1 UTILITY PLAN
- C3.1 GRADING AND DRAINAGE PLAN (SHEET 1 OF 2)
- C3.2 GRADING AND DRAINAGE PLAN (SHEET 2 OF 2)
- C4.1 EROSION AND SEDIMENT CONTROL PLAN (SHEET 1 OF 2)
- C4.2 EROSION AND SEDIMENT CONTROL PLAN (SHEET 2 OF 2)
- C5.1 TYPICAL PAVEMENT DETAILS
- C5.2 TYPICAL MARKING NOTES AND DETAILS
- C6.1 UTILITY DETAILS (SHEET 1 OF 2)
- C6.2 UTILITY DETAILS (SHEET 2 OF 2)
- C6.3 SANITARY SEWER PROFILES
- C7.1 EROSION CONTROL NOTES AND DETAILS (SHEET 1 OF 4)
- C7.2 EROSION CONTROL NOTES AND DETAILS (SHEET 2 OF 4)
- C7.3 EROSION CONTROL NOTES AND DETAILS (SHEET 3 OF 4)
- C7.4 EROSION CONTROL NOTES AND DETAILS (SHEET 4 OF 4)

ARCHITECTURAL

- ASP0.0 EXISTING OVERALL CAMPUS SITE PLAN
- ASP0.1 DEMOLITION SITE PLAN
- ASP1.0 OVERALL CAMPUS SITE PLAN
- ASP1.1 SITE PLAN
- A1.1 FIRST FLOOR PLAN OVERALL
- A1.11 FIRST FLOOR PLAN NORTH
- A1.12 FIRST FLOOR PLAN SOUTH
- A1.2 SECOND FLOOR PLAN OVERALL
- A1.21 SECOND FLOOR PLAN NORTH
- A1.22 SECOND FLOOR PLAN SOUTH
- A1.3 ROOF PLAN OVERALL
- A1.31 ROOF PLAN NORTH
- A1.32 ROOF PLAN SOUTH, PARTIAL ROOF TOP MECHANICAL PLAN
- A1.4 COURTYARD DETAILS
- A2.1 EXTERIOR ELEVATIONS
- A2.2 EXTERIOR ELEVATION & BUILDING SECTIONS
- A2.3 BUILDING SECTIONS
- A2.4 BUILDING SECTIONS
- A3.1 WALL SECTIONS
- A3.2 WALL SECTIONS
- A3.3 WALL SECTIONS
- A3.4 WALL SECTIONS
- A3.5 WALL SECTIONS
- A4.1 ENLARGED PLANS
- A4.2 ENLARGED PLANS
- A4.3 ENLARGED PLANS
- A4.4 INTERIOR ELEVATIONS
- A4.5 INTERIOR ELEVATIONS, LAB EQUIPMENT SCHEDULE
- A4.6 INTERIOR ELEVATIONS
- A5.1 FIRST FLOOR REFLECTED CEILING PLAN OVERALL
- A5.11 FIRST FLOOR REFLECTED CEILING PLAN NORTH
- A5.12 FIRST FLOOR REFLECTED CEILING PLAN SOUTH
- A5.2 SECOND FLOOR REFLECTED CEILING PLAN OVERALL
- A5.21 SECOND FLOOR REFLECTED CEILING PLAN NORTH
- A5.22 SECOND FLOOR REFLECTED CEILING PLAN SOUTH
- A6.1 EXTERIOR DETAILS
- A6.2 EXTERIOR DETAILS
- A6.3 EXTERIOR DETAILS
- A6.4 EXTERIOR DETAILS
- A7.11 PARTITION TYPES, UL DETAILS
- A7.12 UL DETAILS
- A7.2 STAIR DETAILS
- A7.3 INTERIOR DETAILS
- A7.4 CASEWORK SECTIONS/INTERIOR DETAILS
- A8.1 DOOR SCHEDULE & DOOR TYPES, FRAME TYPES
- A8.2 WINDOW SCHEDULE, CURTAIN WALL & WINDOW TYPES
- A8.3 DOOR DETAILS
- A8.4 WINDOW, CURTAIN WALL & LOUVER DETAILS
- A9.11 FIRST FLOOR PLAN NORTH ARCHITECTURAL FINISHES
- A9.12 FIRST FLOOR PLAN SOUTH ARCHITECTURAL FINISHES
- A9.21 SECOND FLOOR PLAN NORTH ARCHITECTURAL FINISHES
- A9.22 SECOND FLOOR PLAN SOUTH ARCHITECTURAL FINISHES

STRUCTURAL

- S0.1 GENERAL NOTES
- S0.2 GENERAL NOTES AND ABBREVIATIONS
- S1.11 FOUNDATION PLAN - NORTH
- S1.12 FOUNDATION PLAN - SOUTH
- S1.21 SECOND FLOOR FRAMING PLAN - NORTH
- S1.22 SECOND FLOOR FRAMING PLAN - SOUTH
- S1.31 ROOF FRAMING PLAN - NORTH
- S1.32 ROOF FRAMING PLAN - SOUTH
- S3.1 FOUNDATION SECTIONS
- S3.2 FRAMING SECTIONS
- S3.3 FRAMING SECTIONS
- S3.4 FRAMING SECTIONS
- S3.5 FRAMING SECTIONS
- S4.1 ENLARGED FRAMING PLANS
- S5.1 TYPICAL DETAILS
- S5.2 TYPICAL DETAILS
- S5.3 TYPICAL DETAILS
- S5.4 TYPICAL DETAILS
- S5.5 TYPICAL DETAILS
- S5.6 TYPICAL DETAILS



VOLUME 2

TITLE SHEET - VOLUME 2

FIRE PROTECTION

- FP0.1 FIRE PROTECTION NOTES, LEGENDS, SCHEDULES AND RISER SCHEMATICS/DETAILS
- FP0.2 FIRE PROTECTION RATED WALL LEGENDS
- FP1.1 FIRST FLOOR FIRE PROTECTION PLAN OVERALL
- FP1.11 FIRST FLOOR FIRE PROTECTION PLAN NORTH
- FP1.12 FIRST FLOOR FIRE PROTECTION PLAN SOUTH
- FP2.1 SECOND FLOOR FIRE PROTECTION PLAN OVERALL
- FP2.11 SECOND FLOOR FIRE PROTECTION PLAN NORTH
- FP2.12 SECOND FLOOR FIRE PROTECTION PLAN SOUTH

PLUMBING

- PO.0 PLUMBING NOTES, LEGEND, LOAD, AND FIXTURE SCHEDULE
- PO.1 PLUMBING FIXTURE SCHEDULE
- PO.2 PLUMBING FIXTURE SCHEDULE
- P1.1 FIRST FLOOR PLUMBING PLAN OVERALL
- P1.11 FIRST FLOOR PLUMBING PLAN NORTH
- P1.12 FIRST FLOOR PLUMBING PLAN SOUTH
- P1.2 SECOND FLOOR PLUMBING PLAN OVERALL
- P1.21 SECOND FLOOR PLUMBING PLAN NORTH
- P1.22 SECOND FLOOR PLUMBING PLAN SOUTH
- P1.3 ROOF PLUMBING PLAN OVERALL
- P1.31 ROOF PLUMBING PLAN NORTH
- P1.32 ROOF PLUMBING PLAN SOUTH
- P2.1 ENLARGED PLUMBING PLANS
- P2.2 ENLARGED PLUMBING PLANS
- P3.1 WASTE PIPING RISER
- P4.1 PLUMBING DETAILS
- P4.2 PLUMBING DETAILS

MECHANICAL

- M0.1 MECHANICAL NOTES, LEGEND, SCHEDULES
- M0.2 MECHANICAL SCHEDULES
- M0.3 MECHANICAL OUTSIDE AIR SUMMARY
- M1.1 FIRST FLOOR MECHANICAL PLAN OVERALL
- M1.11 FIRST FLOOR MECHANICAL PLAN NORTH
- M1.12 FIRST FLOOR MECHANICAL PLAN SOUTH
- M1.2 SECOND FLOOR MECHANICAL PLAN OVERALL
- M1.21 SECOND FLOOR MECHANICAL PLAN NORTH
- M1.22 SECOND FLOOR MECHANICAL PLAN SOUTH
- M2.1 ROOF MECHANICAL PLAN
- M2.11 FIRST FLOOR PIPING PLAN NORTH
- M2.12 FIRST FLOOR PIPING PLAN SOUTH
- M2.21 SECOND FLOOR PIPING PLAN NORTH
- M2.22 SECOND FLOOR PIPING PLAN SOUTH
- M3.1 ENLARGED MECHANICAL PLANS
- M4.1 HOT WATER PIPING SCHEMATIC
- M4.2 CHILLED WATER PIPING SCHEMATIC
- M5.1 CONTROLS DRAWINGS
- M5.2 CONTROLS DRAWINGS
- M5.3 CONTROLS DRAWINGS
- M5.4 CONTROLS DRAWINGS
- M5.5 CONTROLS DRAWINGS
- M5.6 CONTROLS DRAWINGS
- M5.7 CONTROLS DRAWINGS
- M5.8 CONTROLS DRAWINGS
- M6.1 MECHANICAL DETAILS
- M6.2 MECHANICAL DETAILS
- M6.3 MECHANICAL DETAILS

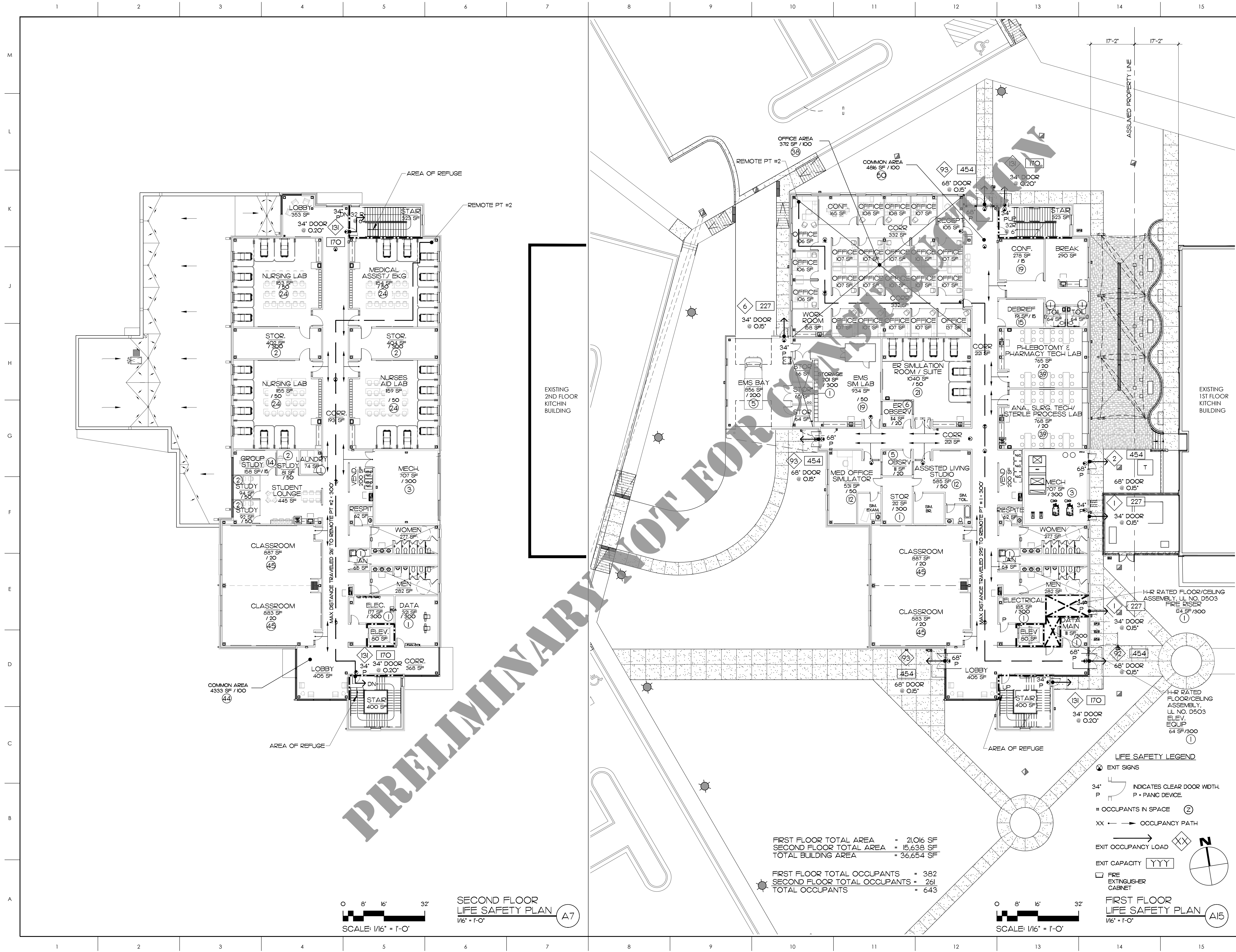
ELECTRICAL/FIRE ALARM

- E0.0 ELECTRICAL LEGEND, NOTES, FIRE PENETRATION DETAILS
- E0.1 LIGHT FIXTURE SCHEDULE, SEQUENCE OF OPERATIONS, DETAILS
- E0.2 ELECTRICAL DETAILS
- E1.0 ELECTRICAL SITE PLAN
- E1.1 OVERALL FIRST FLOOR ELECTRICAL PLAN
- E1.11 FIRST FLOOR ELECTRICAL PLAN - NORTH
- E1.12 FIRST FLOOR ELECTRICAL PLAN - SOUTH
- E1.2 OVERALL SECOND FLOOR ELECTRICAL PLAN
- E1.21 SECOND FLOOR ELECTRICAL PLAN - NORTH
- E1.22 SECOND FLOOR ELECTRICAL PLAN - SOUTH
- E2.11 FIRST FLOOR POWER PLAN - NORTH
- E2.12 FIRST FLOOR POWER PLAN - SOUTH
- E2.21 SECOND FLOOR POWER PLAN - NORTH
- E2.22 SECOND FLOOR POWER PLAN - SOUTH
- E3.11 FIRST FLOOR HVAC POWER PLAN - NORTH
- E3.12 FIRST FLOOR HVAC POWER PLAN - SOUTH
- E3.21 SECOND FLOOR HVAC POWER PLAN - NORTH
- E3.22 SECOND FLOOR HVAC POWER PLAN - SOUTH
- E4.1 ENLARGED ELECTRICAL PLANS
- E4.2 ROOF ELECTRICAL PLANS
- E5.1 POWER, COMMUNICATIONS, AND SECURITY RISERS
- E5.2 PANEL SCHEDULES
- E5.3 PANEL SCHEDULES
- FA0.0 FIRE ALARM RISER, LEGEND, NOTES, DETAILS, MATRIX
- FA1.1 OVERALL FIRST FLOOR FIRE ALARM PLAN
- FA1.11 FIRST FLOOR FIRE ALARM PLAN - NORTH
- FA1.12 FIRST FLOOR FIRE ALARM PLAN - SOUTH
- FA1.2 OVERALL SECOND FLOOR FIRE ALARM PLAN
- FA1.21 SECOND FLOOR FIRE ALARM PLAN - NORTH
- FA1.22 SECOND FLOOR FIRE ALARM PLAN - SOUTH
- FA1.3 ROOF FIRE ALARM PLAN
- FA2.1 ENLARGED FIRE ALARM PLANS

NESER & ROOMSBURG, PA
STRUCTURAL ENGINEERS
748 LORD DUNMORE DRIVE, STE. 101
VIRGINIA BEACH, VA 23464
757-474-0612

AVCON, INC.
CIVIL/SITE ENGINEERS
6230 CAROLINA BEACH ROAD
WILMINGTON, NC 28412
910-685-7113

ATLANTEC ENGINEERS/IMEG, PA
PLUMBING, MECHANICAL & ELECTRICAL ENGINEERS
3221 BLUE RIDGE ROAD, SUITE 113
RALEIGH, NC 27612
919-571-1111



MATERIALS KEYING LEGEND

GENERAL NOTES
 - - - - - 1 HR FIRE RATED BARRIER

KEY PLAN

SCO ID #24-28929-02A

NO	REVISION	DATE



625 LYNNDALE CT., SUITE F, GREENVILLE, NC 27858 252-355-1048
SAMPSON COMMUNITY COLLEGE NURSING & ALLIED HEALTH BUILDING
 CLINTON, NC

DRAWING TITLE
LIFE SAFETY PLANS

SCALE	1/16" = 1'-0"	DRAWING NO.	BCI.2
DRAWN	MBD	CHECKED	
DATE	12-1-2025	PROJECT NO.	

FIRST FLOOR TOTAL AREA = 21,016 SF
 SECOND FLOOR TOTAL AREA = 15,638 SF
 TOTAL BUILDING AREA = 36,654 SF

FIRST FLOOR TOTAL OCCUPANTS = 382
 SECOND FLOOR TOTAL OCCUPANTS = 261
 TOTAL OCCUPANTS = 643

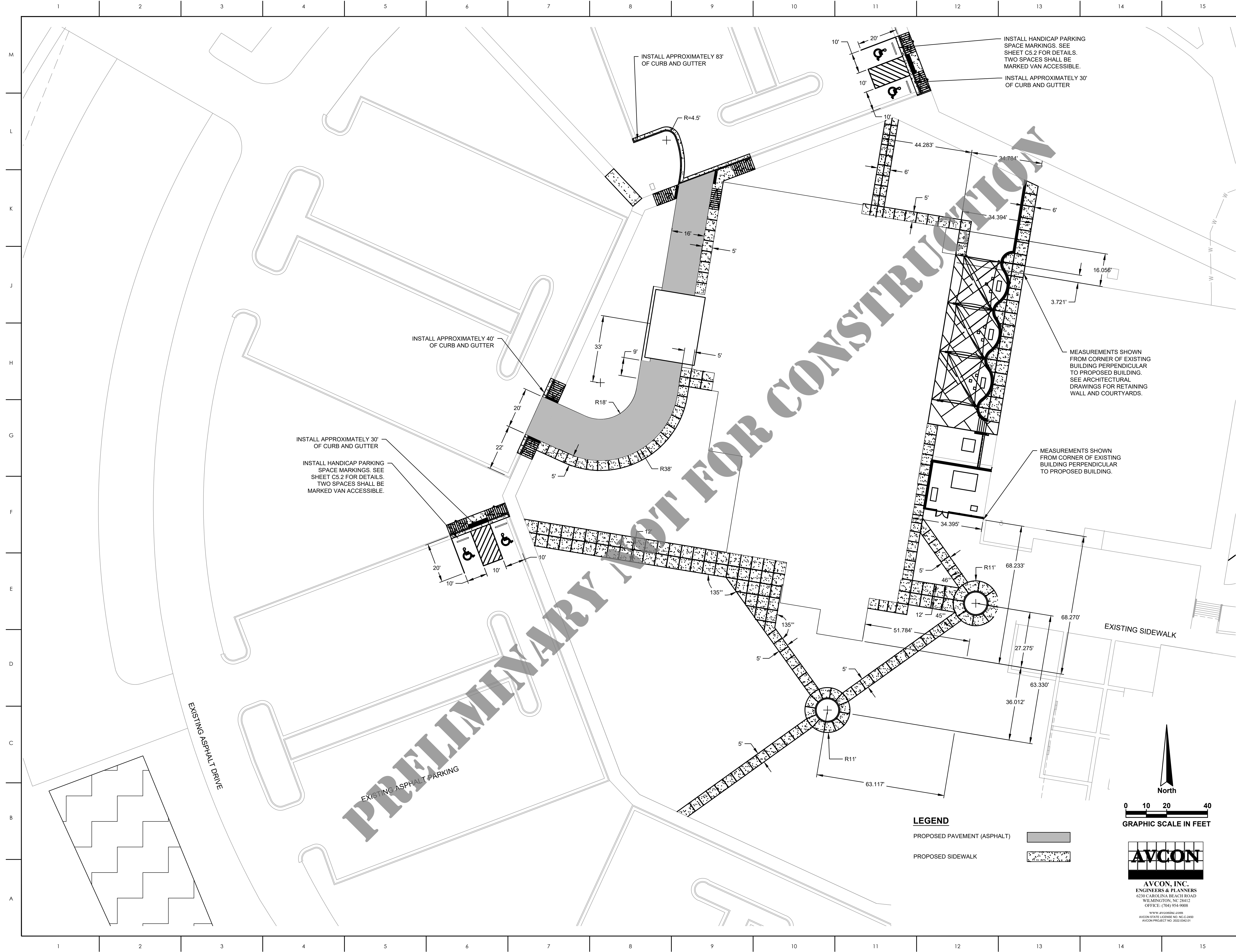
LIFE SAFETY LEGEND

- EXIT SIGNS
- INDICATES CLEAR DOOR WIDTH. P = PANIC DEVICE.
- OCCUPANTS IN SPACE
- OCCUPANCY PATH
- EXIT OCCUPANCY LOAD
- EXIT CAPACITY
- FIRE EXTINGUISHER CABINET

FIRST FLOOR LIFE SAFETY PLAN
 SCALE: 1/16" = 1'-0"

SECOND FLOOR LIFE SAFETY PLAN
 SCALE: 1/16" = 1'-0"

FIRST FLOOR LIFE SAFETY PLAN
 SCALE: 1/16" = 1'-0"



MATERIALS KEYING LEGEND



GENERAL NOTES

- EXISTING UTILITIES SHOWN ARE APPROXIMATE AND SHOULD BE FIELD VERIFIED BY CONTRACTOR.
- PAVING SPOTS WILL BE PROVIDED IN DIGITAL FORMAT TO CONTRACTOR ONCE PROJECT IS AWARDED.
- REFERENCE IS DIRECTED TO THE STRUCTURAL DRAWINGS FOR ADDITIONAL INFORMATION REGARDING THE BUILDING.

KEY PLAN



SCO ID #24-28929-02A

NO	REVISION	DATE

NORTH CAROLINA
FOR REVIEW
ONLY
REGISTERED PROFESSIONAL ENGINEER

JKF

ARCHITECTURE

625 LYNDDALE CT., SUITE F, GREENVILLE, NC 27858 252-355-1048

SAMPSON COMMUNITY COLLEGE
NURSING & ALLIED
HEALTH BUILDING
CLINTON, NC

SITE PLAN

SCALE	DRAWING NO.
1" = 20'-0"	C1.1
DRAWN	JCW
CHECKED	GMW
DATE	12-1-2025
PROJECT NO.	2025-12

LEGEND

PROPOSED PAVEMENT (ASPHALT)

PROPOSED SIDEWALK

North

0 10 20 40
GRAPHIC SCALE IN FEET

AVCON
ENGINEERS & PLANNERS
6230 CAROLINA BEACH ROAD
WILMINGTON, NC 28412
OFFICE: (704) 954-9008
WWW.AVCONINC.COM
AVCON STATE LICENSE NO. NC-C-3490
AVCON PROJECT NO. 202504251

NOTE:
 NCDOT ROAD IMPROVEMENT PROJECT
 ONGOING DURING PROJECT SURVEY

MATERIALS KEYING LEGEND

GENERAL NOTES
 EFFECTIVE FIRM: 3720148400K
 CID 370263, PANEL 1484
 EFFECTIVE DATE: 6/20/2018

KEY PLAN

SCO ID #24-28929-02A

NO	REVISION	DATE

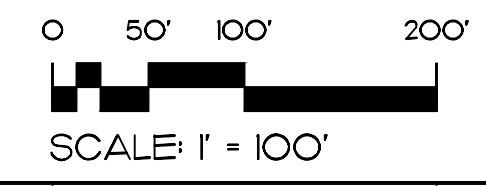
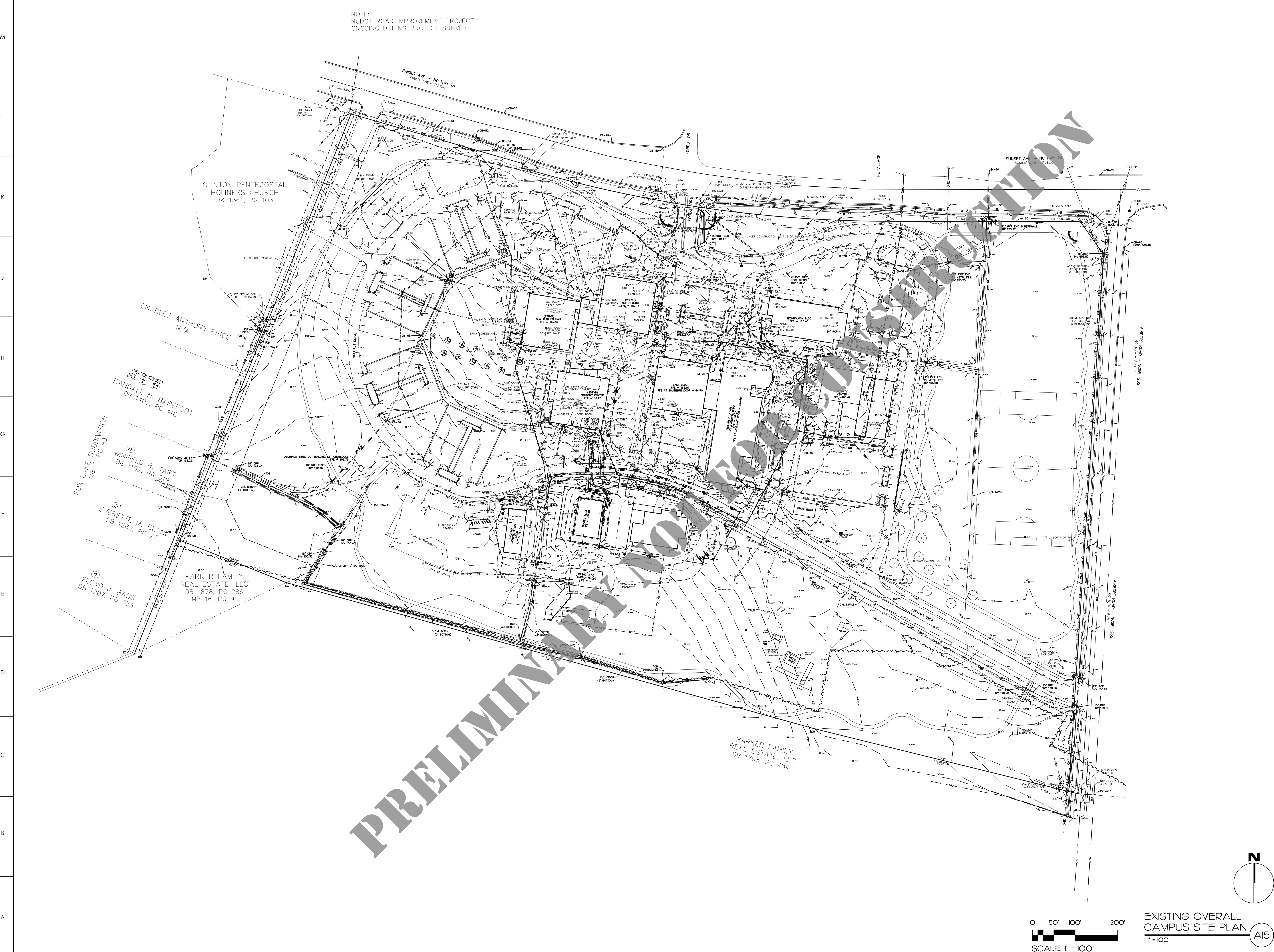
JOHN K. FARKAS
 REGISTERED ARCHITECT
 5922
 FOR REVIEW ONLY

JKF
 ARCHITECTURE

625 LYNNDALE CT., SUITE F, GREENVILLE, NC 27858 252-355-1048
 SAMPSON COMMUNITY
 COLLEGE NURSING & ALLIED
 HEALTH BUILDING
 CLINTON, NC

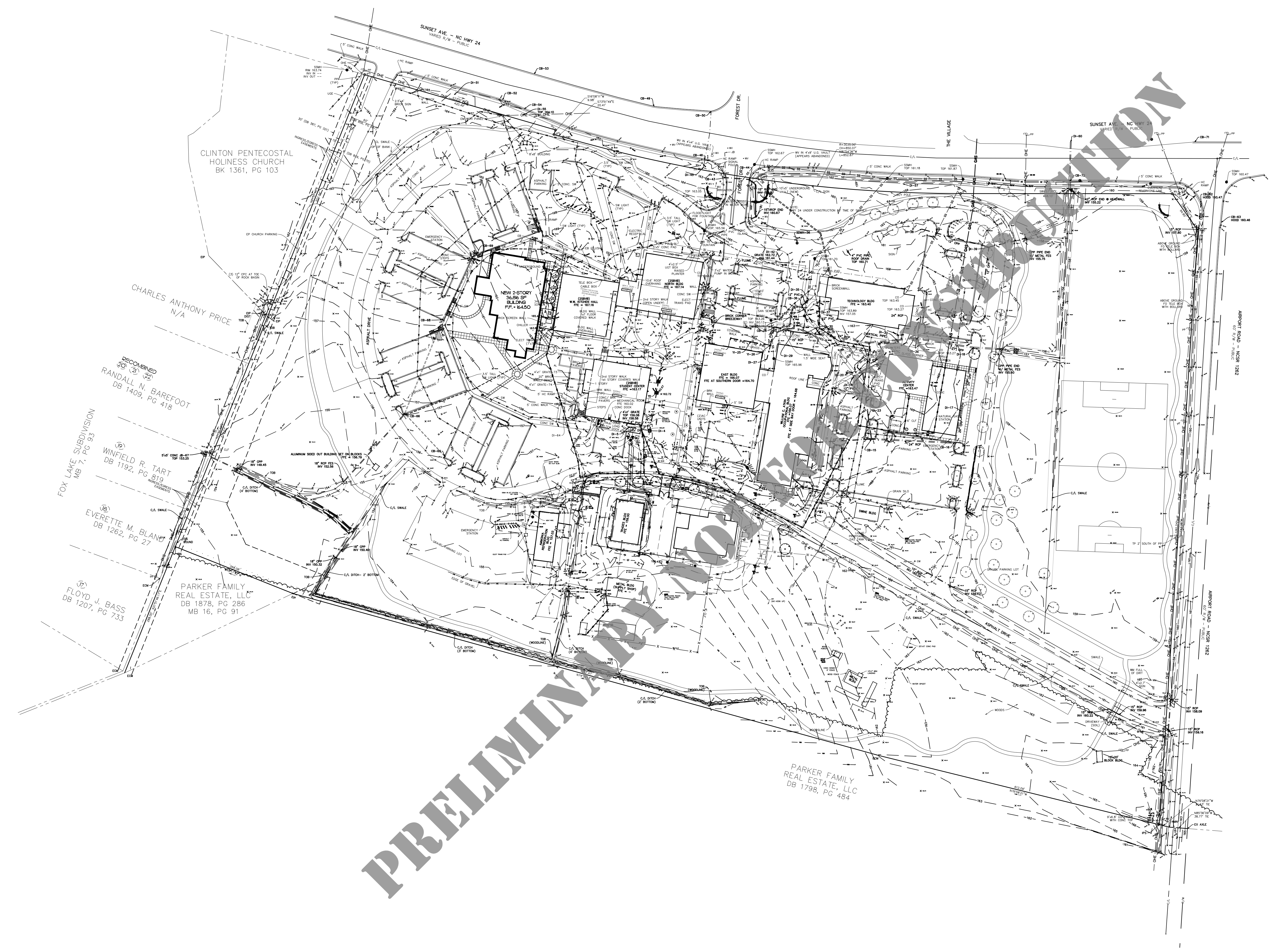
DRAWING TITLE
 EXISTING OVERALL CAMPUS
 SITE PLAN

SCALE	1" = 100'	DRAWING NO.	
DRAWN	MBD		
CHECKED	JKF		
DATE	12-1-2025		
PROJECT NO.	2024-12		



EXISTING OVERALL
 CAMPUS SITE PLAN
 A15

NOTE:
 NCDOT ROAD IMPROVEMENT PROJECT
 ONGOING DURING PROJECT SURVEY



MATERIALS KEYING LEGEND

PER CITY OF CLINTON LAND DEVELOPMENT ORDINANCE:
 CAMPUS ZONED - PC-PUBLIC CONSERVATION DISTRICT. NO RESTRICTIONS ON LOT OR SETBACKS.
PARKING REQUIREMENTS:
 650 REQUIRED PARKING (2600 FTE STUDENTS /4)
 733 EXISTING PARKING SPACES
 15 HC REQUIRED (21)
 32 HC PROVIDED
 2 HC VAN ACCESSIBLE (REQUIRED 1/3)
 2 HC VAN ACCESSIBLE PROVIDED

GENERAL NOTES

KEY PLAN

SCO ID #24-28929-02A

NO	REVISION	DATE

FOR REVIEW ONLY

JKF

ARCHITECTURE

625 LYNDALE CT., SUITE F, GREENVILLE, NC 27858 252-355-1048

SAMPSON COMMUNITY COLLEGE NURSING & ALLIED HEALTH BUILDING
 CLINTON, NC

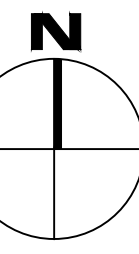
DRAWING TITLE
OVERALL CAMPUS SITE PLAN

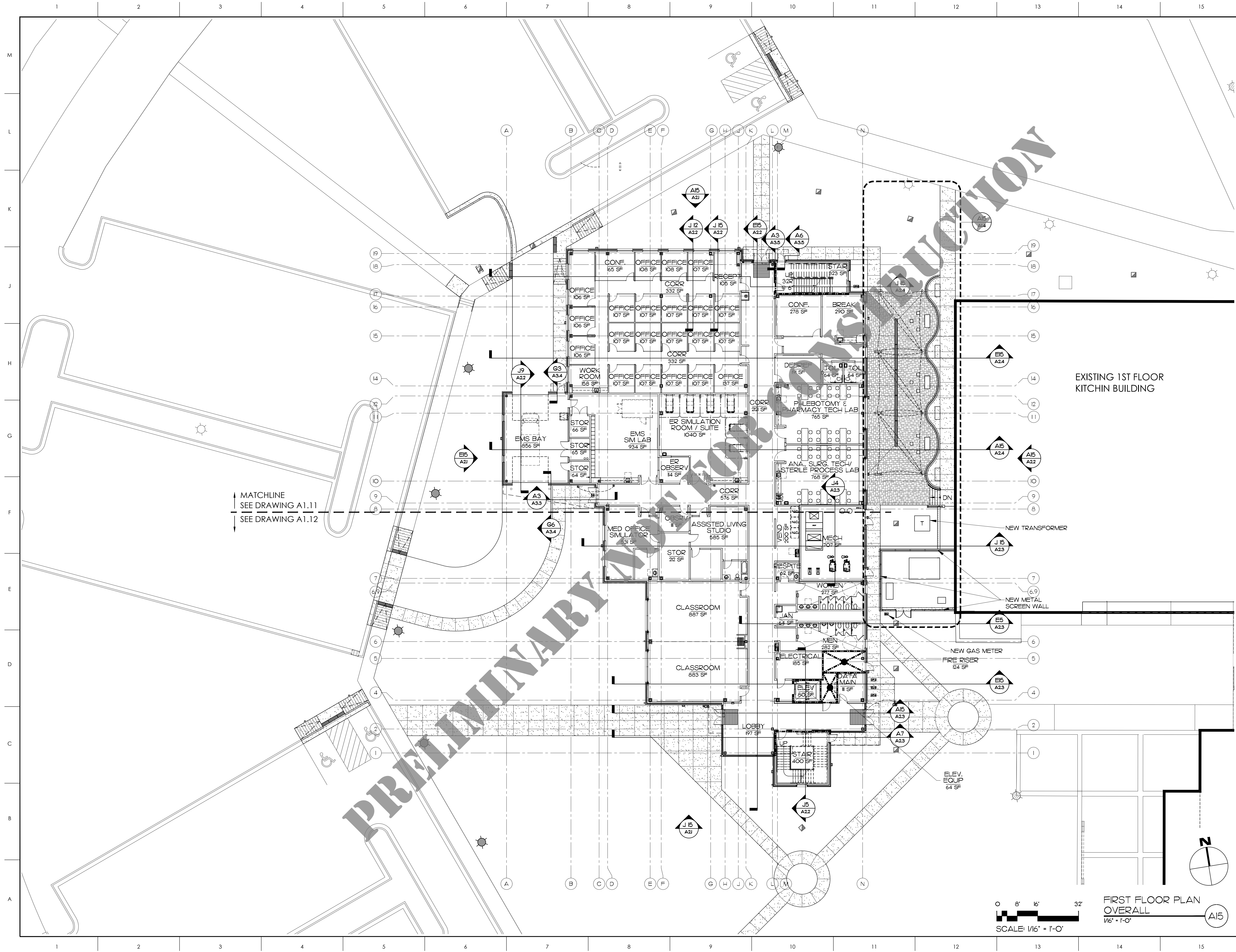
SCALE 1" = 100'	DRAWING NO.
DRAWN MBD	
CHECKED JKF	
DATE 12-1-2025	
PROJECT NO. 2024-12	

SCALE: 1" = 100'

OVERALL CAMPUS SITE PLAN

1" = 100'





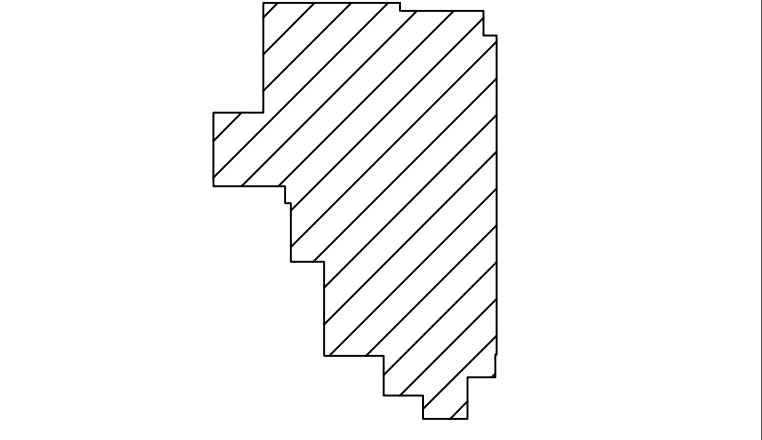
MATERIALS KEYING LEGEND

GENERAL NOTES	
-----	1 HR FIRE RATED BARRIER

GENERAL NOTES

GENERAL NOTES	
-----	1 HR FIRE RATED BARRIER

KEY PLAN



SCO ID #24-28929-02A

NO	REVISION	DATE

FOR REVIEW ONLY

JKF

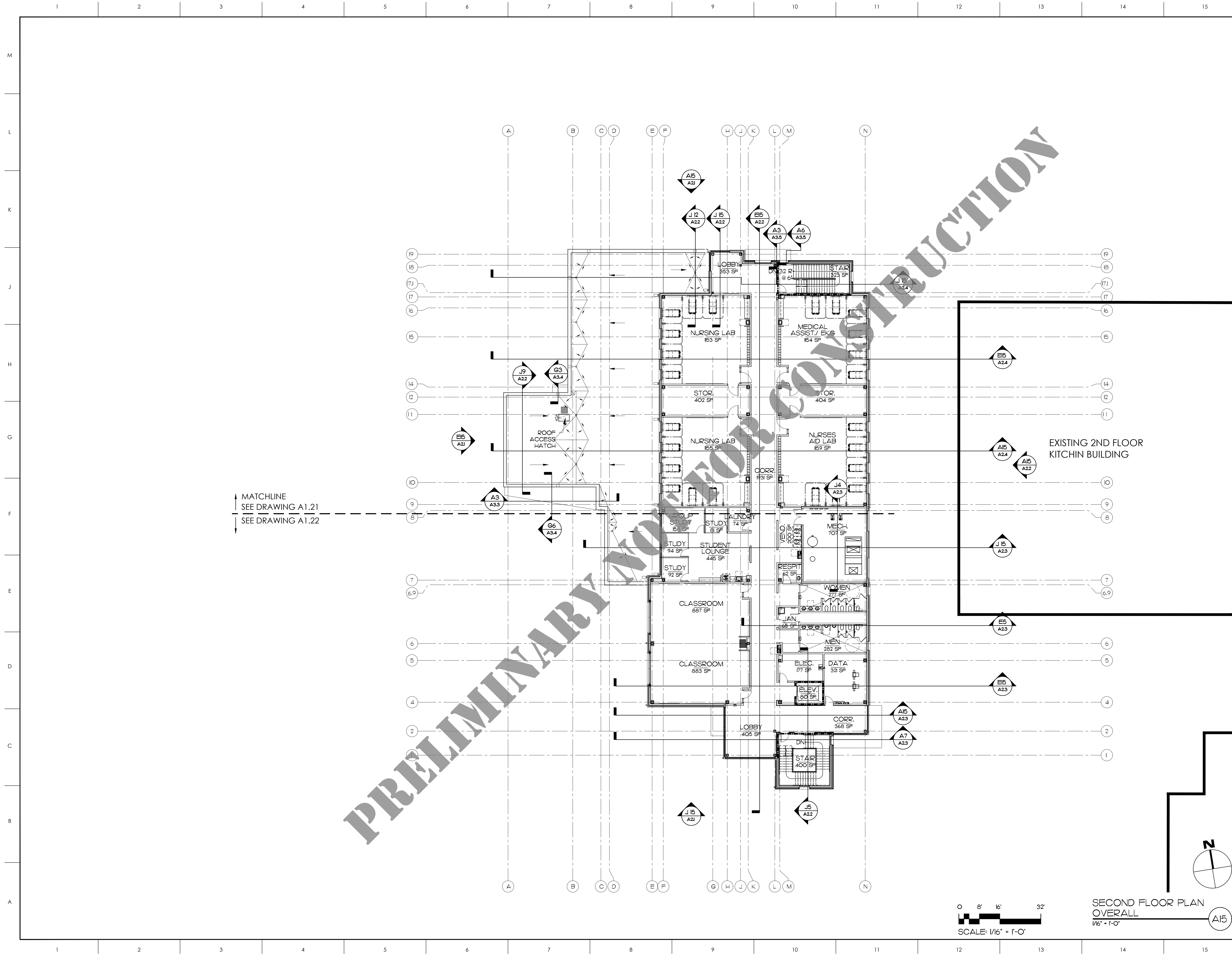
ARCHITECTURE

425 LYNDALE CT., SUITE F, GREENVILLE, NC 27838 252-355-1048

SAMPSON COMMUNITY COLLEGE NURSING & ALLIED HEALTH BUILDING CLINTON, NC

DRAWING TITLE
FIRST FLOOR PLAN OVERALL

SCALE	1/16" = 1'-0"	DRAWING NO.	A11
DRAWN	MCZ	CHECKED	JKF
DATE	12-1-2025	PROJECT NO.	2024-12



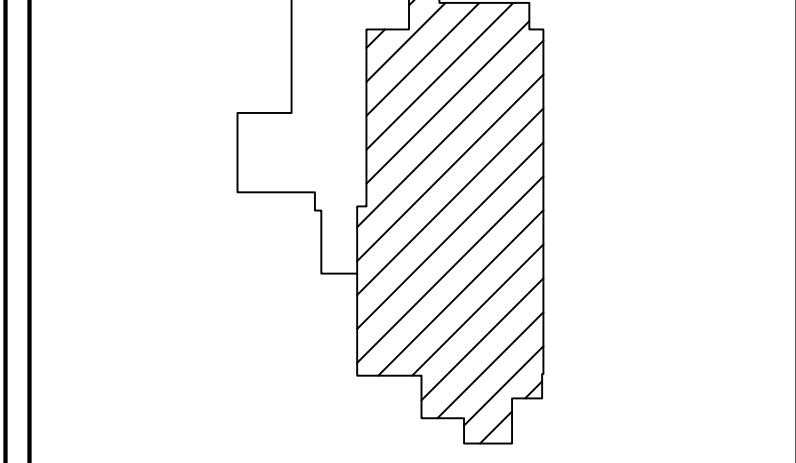
MATCHLINE
SEE DRAWING A1.21
SEE DRAWING A1.22

MATERIALS KEYING LEGEND

GENERAL NOTES

----- 1 HR FIRE RATED BARRIER

KEY PLAN



SCO ID #24-28929-02A

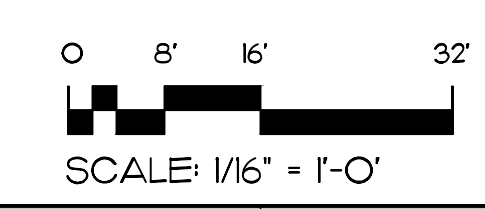
NO	REVISION	DATE

JKF
 ARCHITECTURE

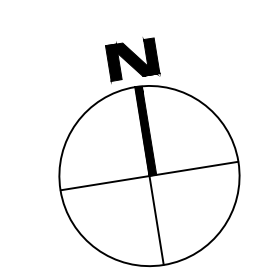
425 LYNNDALE CT., SUITE F, GREENVILLE, NC 27838 252-355-1048
SAMPSON COMMUNITY COLLEGE NURSING & ALLIED HEALTH BUILDING
 CLINTON, NC

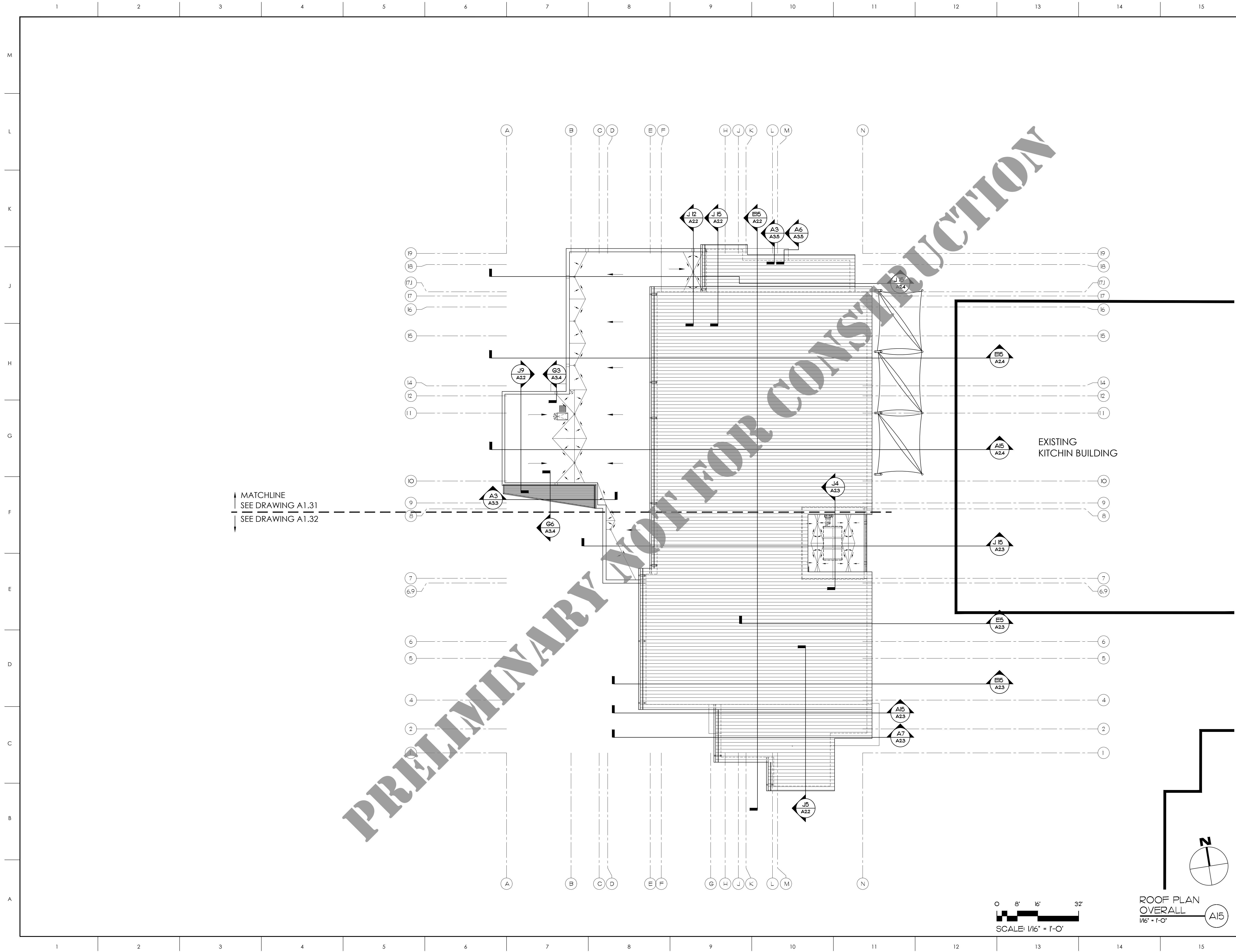
DRAWING TITLE
SECOND FLOOR PLAN OVERALL

SCALE	1/16" = 1'-0"	DRAWING NO.	A1.2
DRAWN	JRH		
CHECKED	JKF		
DATE	12-1-2025		
PROJECT NO.	2024-12		



SECOND FLOOR PLAN OVERALL
 1/16" = 1'-0"



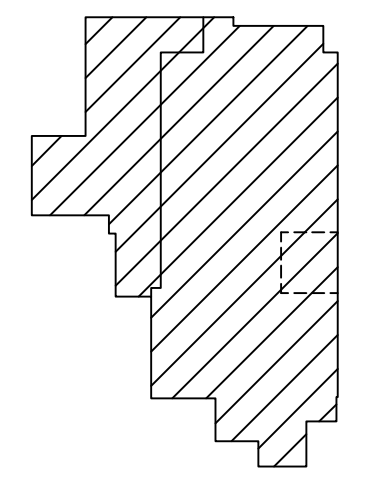


PRELIMINARY NOT FOR CONSTRUCTION

MATERIALS KEYING LEGEND

GENERAL NOTES

KEY PLAN



SCO ID #24-28929-02A

NO	REVISION	DATE

JOHN K. FARKAS
REGISTERED ARCHITECT
5922
FOR REVIEW ONLY

JKF
ARCHITECTURE

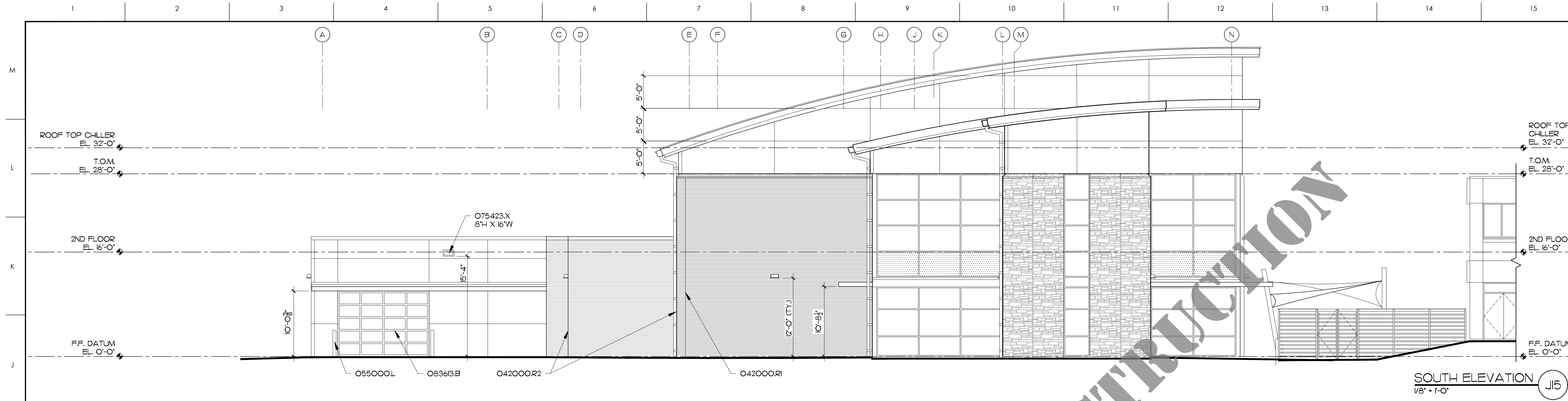
625 LYNNDALE CT., SUITE F, GREENVILLE, NC 27658 252-355-1048

SAMPSON COMMUNITY
COLLEGE NURSING & ALLIED
HEALTH BUILDING
CLINTON, NC

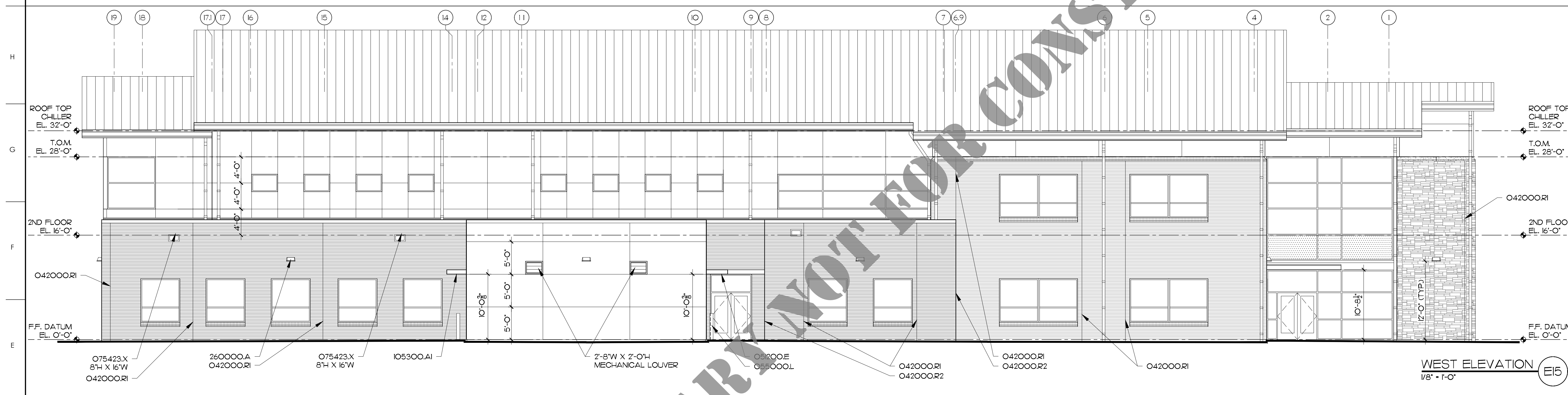
DRAWING TITLE

ROOF PLAN
OVERALL

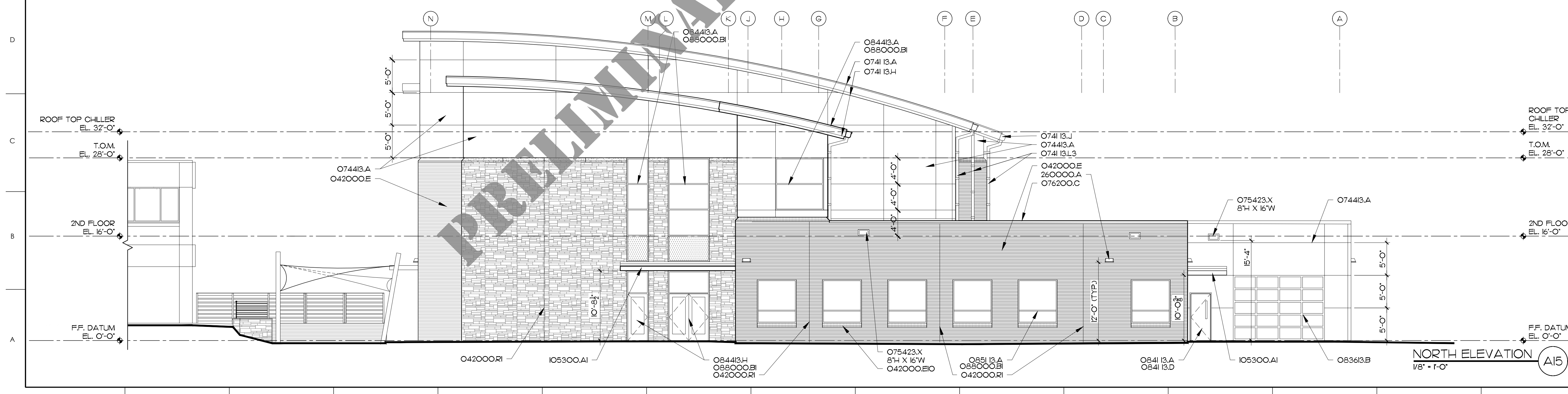
SCALE	1/16" = 1'-0"	DRAWING NO.	A1.3
DRAWN	JRH		
CHECKED	JKF		
DATE	12-1-2025		
PROJECT NO.	2024-12		



SOUTH ELEVATION (J15)
1/8" = 1'-0"



WEST ELEVATION (E15)
1/8" = 1'-0"



NORTH ELEVATION (A15)
1/8" = 1'-0"

MATERIALS KEYING LEGEND

- O42000.E - FACE BRICK
- O42000.EIO - FACE BRICK, SOLDIER COURSE SILL, SPECIAL SHAPE
- O42000.R1 - CONTROL JOINT
- O42000.R2 - CONTROL JOINT, INSIDE CORNER
- O52000.E - STEEL CANOPY ASSEMBLY
- O55000.L - PIPE BOLLARD, CONCRETE FILLED
- O74113.A - METAL ROOF, STANDING SEAM SYSTEM
- O74113.H - METAL FASCIA
- O74113.J - METAL GUTTER
- O74113.L3 - METAL DOWNSPOUT, 5X5
- O74413.A - COMPOSITE WALL PANEL, FLUSH PANEL W/REVEAL
- O75423.X - OVERFLOW SCUPPER
- O76200.C - METAL COPING
- O83613.B - OVERHEAD SECTIONAL DOOR, ALUMINUM, ACRYLIC
- O84113.A - STOREFRONT FRAMING, THERMALLY BROKEN
- O84113.D - ALUMINUM FRP DOOR
- O84413.A - ALUMINUM CURTAIN WALL ASSEMBLY
- O84413.H - ALUMINUM STILE AND RAIL DOOR
- O85113.A - ALUMINUM WINDOW ASSEMBLY
- O88000.B1 - 1" INSULATING GLASS-LOW E
- O53000.AI - ALUMINUM CANOPY ASSEMBLY, CANTILEVERED
- 260000.A - EXTERIOR LIGHT FIXTURE

GENERAL NOTES

KEY PLAN

SCO ID #24-28929-02A

NO	REVISION	DATE

SEAL

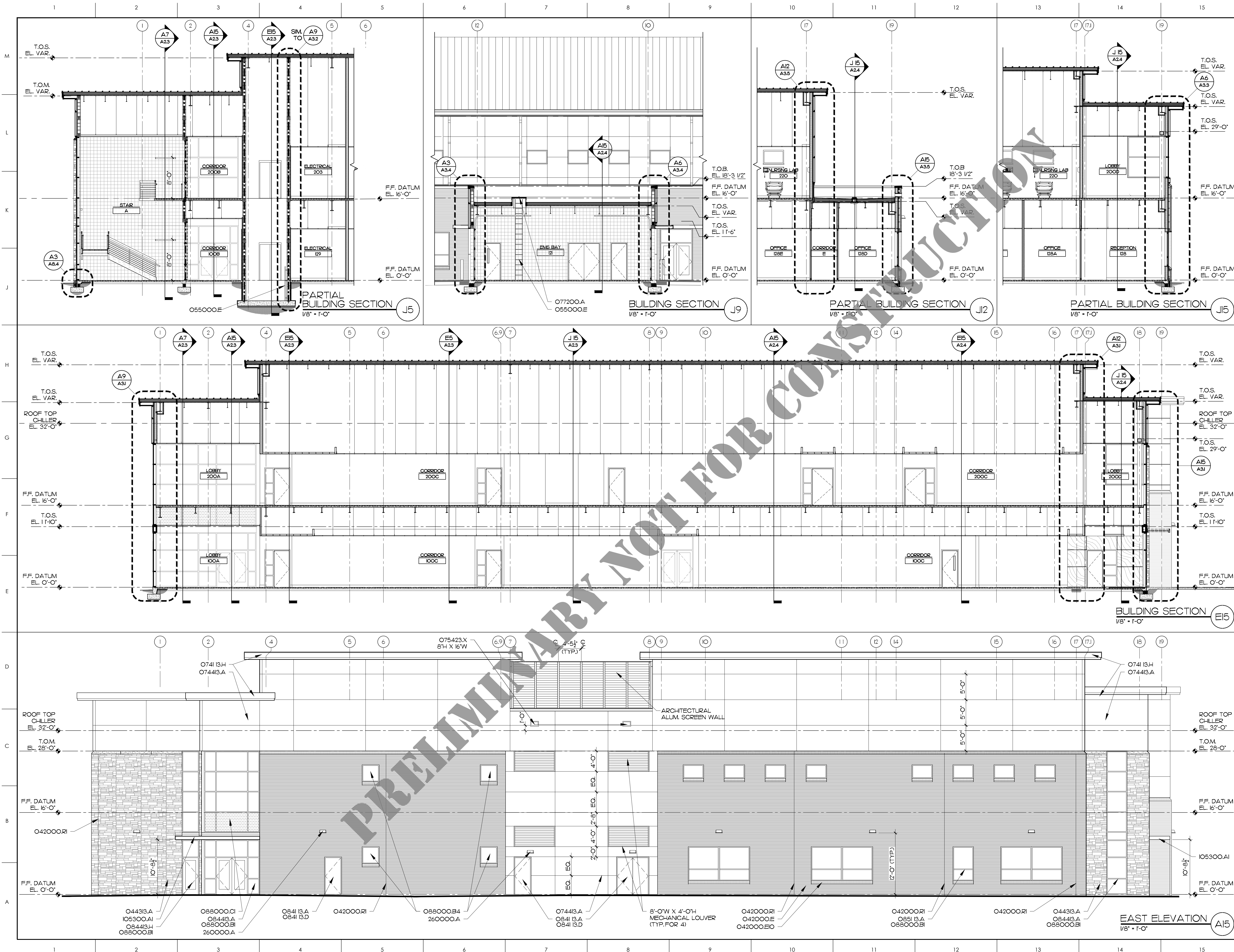
JKF
ARCHITECTURE

625 LYNNDALE CT., SUITE F, GREENVILLE, NC 27858 252-355-1048

SAMPSON COMMUNITY COLLEGE NURSING & ALLIED HEALTH BUILDING
CLINTON, NC

DRAWING TITLE
EXTERIOR ELEVATIONS

SCALE	1/8" = 1'-0"	DRAWING NO.	A21
DRAWN	JRH		
CHECKED	JKF		
DATE	12-1-2025		
PROJECT NO.	2024-12		



MATERIALS KEYING LEGEND

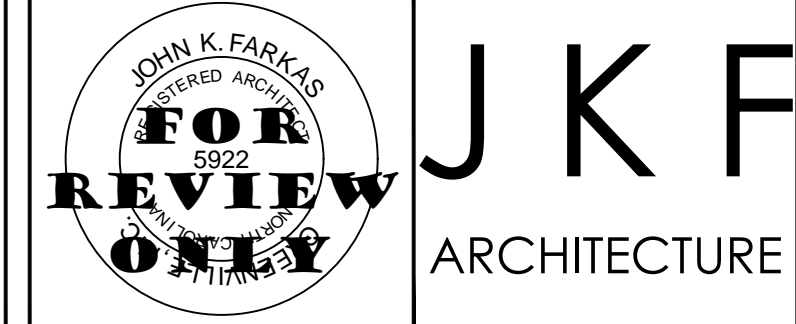
- 042000E - FACE BRICK
- 042000EIO - FACE BRICK, SOLDIER COURSE SILL, SPECIAL SHAPE
- 042000RI - CONTROL JOINT
- 044313.A - ANCHORED STONE MASONRY VENEER
- 055000E - STEEL LADDER
- 074113.H - METAL FASCIA
- 074413.A - COMPOSITE WALL PANEL, FLUSH PANEL, W/REVEAL
- 075423.X - OVERFLOW SCUPPER
- 077200.A - ROOF HATCH, 42X30
- 084113.D - STOREFRONT FRAMING, THERMALLY BROKEN
- 084113.D - ALUMINUM FRP DOOR
- 084413.A - ALUMINUM CURTAIN WALL ASSEMBLY
- 084413.H - ALUMINUM STILE AND RAIL DOOR
- 085113.A - ALUMINUM WINDOW ASSEMBLY
- 088000BI - 1" INSULATING GLASS-LOW E
- 088000B4 - 1" INSULATING GLASS-LOW E, OBSCURE
- 088000CI - INSULATING SPANDREL GLASS, 1" THICK
- 089119.B - FIXED, FORMED-METAL LOUVER
- 105300.AI - ALUMINUM CANOPY ASSEMBLY, CANTILEVERED
- 260000.A - EXTERIOR LIGHT FIXTURE

- GENERAL NOTES**
- 1. ALL CMU EXPOSED TO VIEW TO BE 6X8 SCORED PAINTED CMU BLOCK.
 - 2. ALL EXPOSED STRUCTURAL STEEL TO BE PAINTED.

KEY PLAN

SCO ID #24-28929-02A

NO	REVISION	DATE

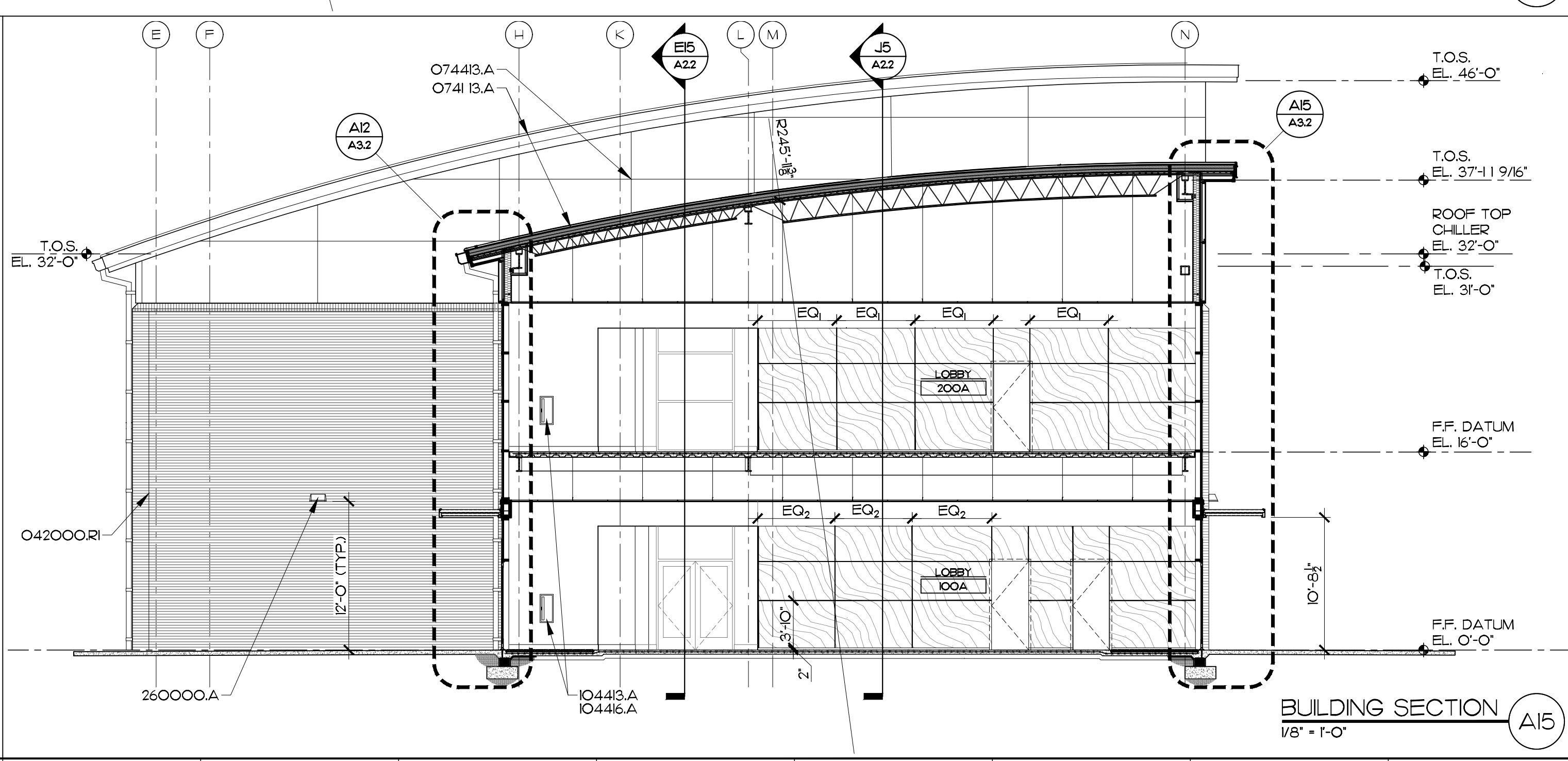
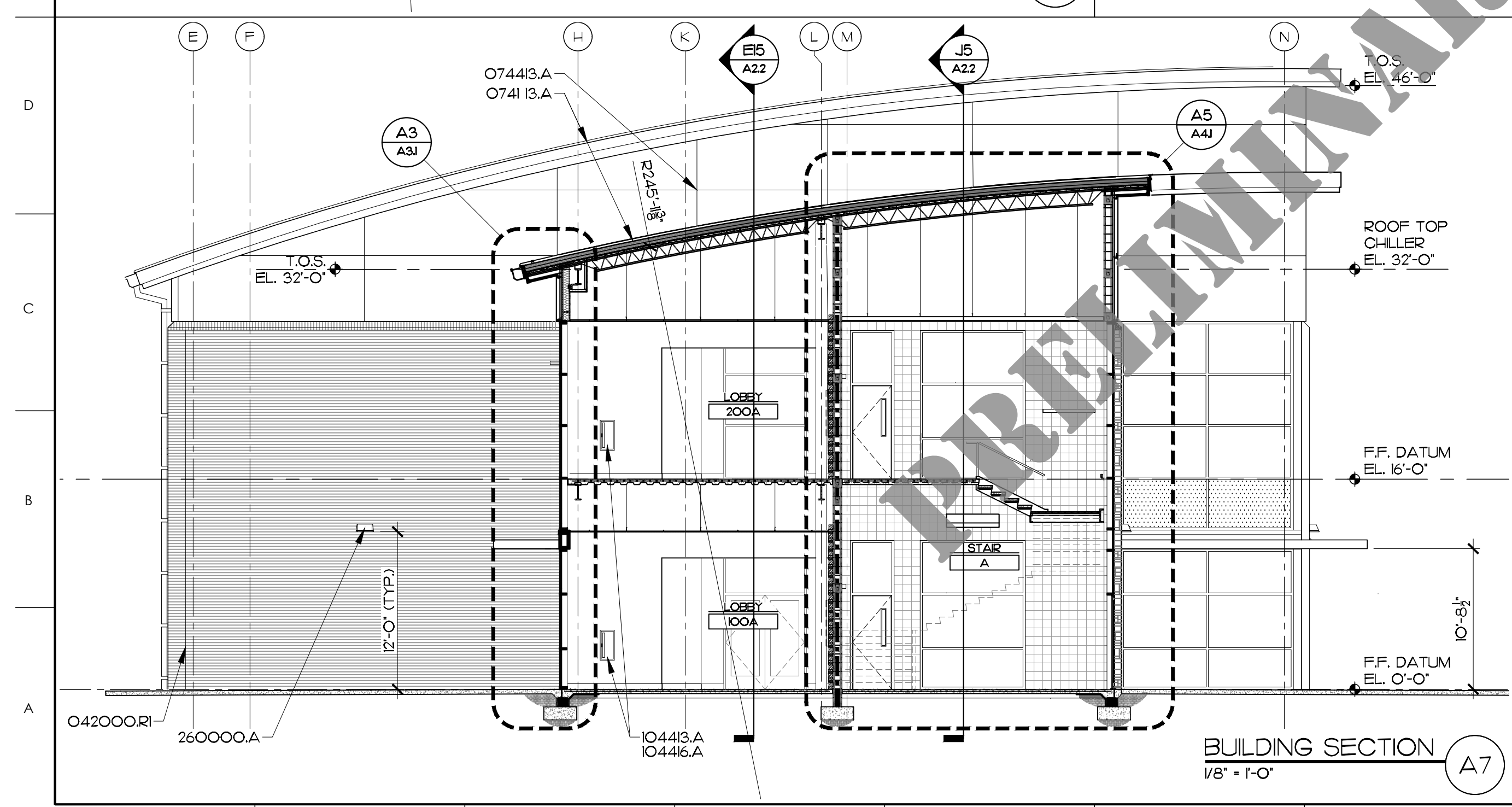
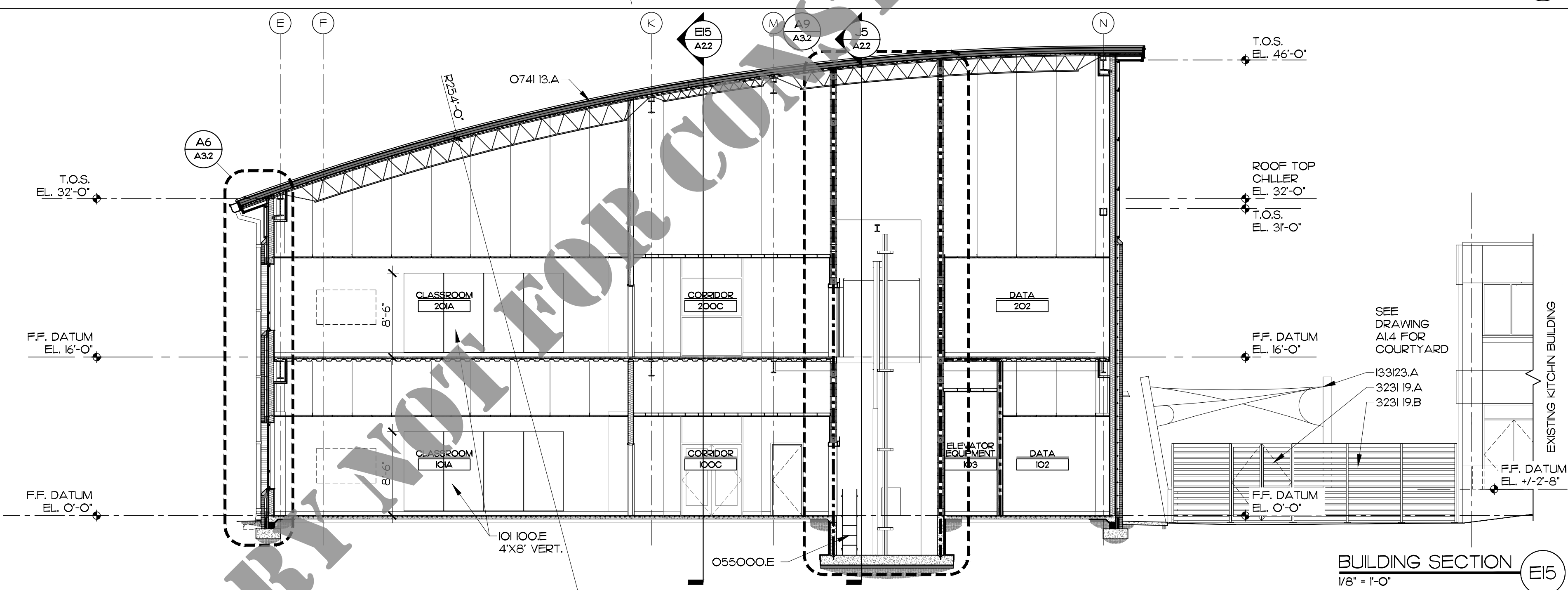
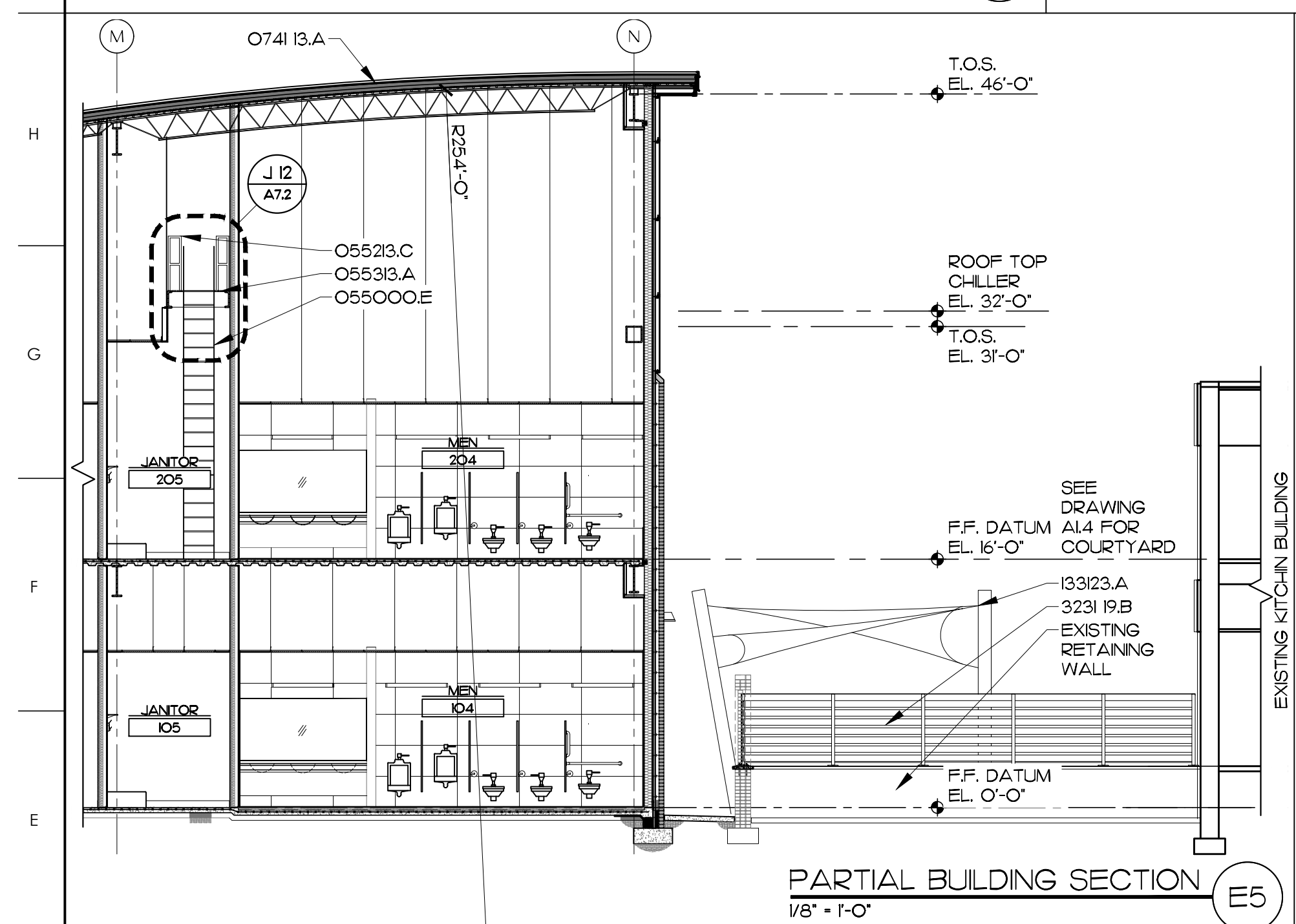
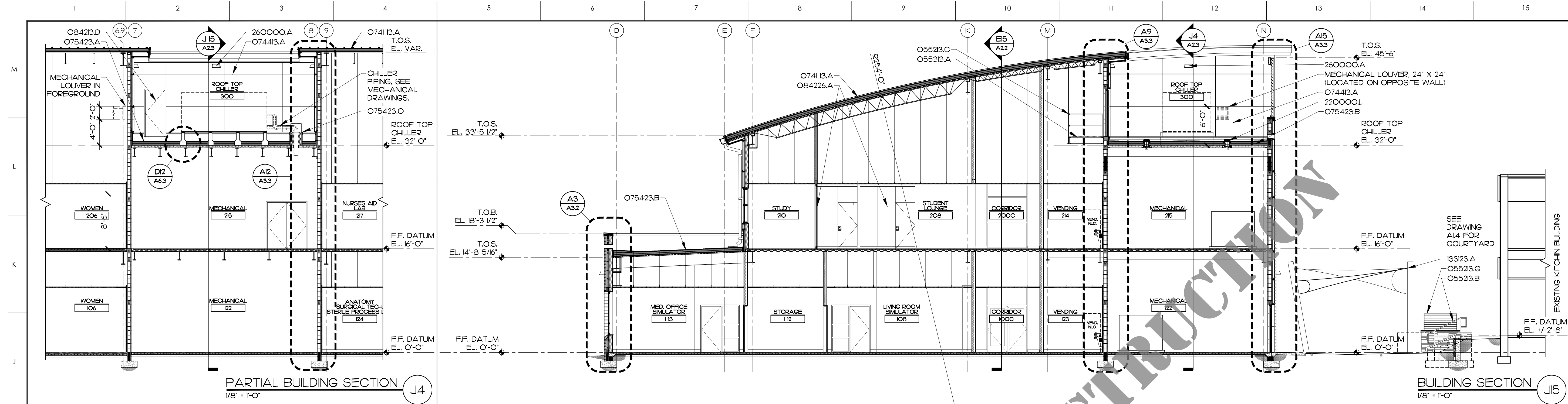


625 LYNDALE CT., SUITE F, GREENVILLE, NC 27658 252-355-1048

SAMPSON COMMUNITY COLLEGE NURSING & ALLIED HEALTH BUILDING
CLINTON, NC

EXTERIOR ELEVATIONS & BUILDING SECTIONS

SCALE	1/8" = 1'-0"	DRAWING NO.	A2.2
DRAWN	JRH	CHECKED	JKF
DATE	12-1-2025	PROJECT NO.	2024-12



MATERIALS KEYING LEGEND

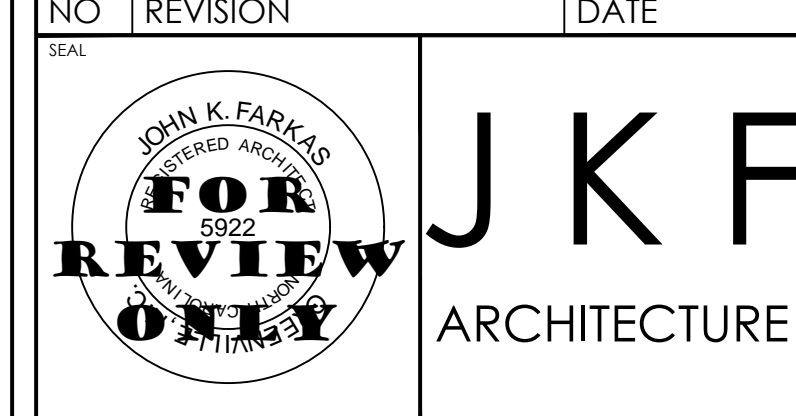
- 055000E - STEEL LADDER
- 055213.B - HANDRAIL, 1 1/2" OD, STAINLESS STEEL
- 055213.C - STEEL GUARDRAIL ASSEMBLY, 42" HIGH, PAINTED
- 055213.G - GUARDRAIL ASSEMBLY, 42" HIGH STAINLESS STEEL
- 055313.A - METAL BAR GRATING
- 0741 13.A - METAL ROOF, STANDING SEAM SYSTEM
- 074413.A - COMPOSITE WALL PANEL, FLUSH PANEL, W/REVEAL
- 075423.A - TPO ROOFING SYSTEM
- 075423.B - TPO MEMBRANE, FULLY ADHERED
- 075423.O - PREFABRICATED, INSULATED ROOF CURB W/ SHEET METAL PIPE SLEEVES.
- 0841 213.D - ALUMINUM FRP DOOR
- 084126.A - ALL GLASS WALL SYSTEM
- 101 100.E - GLASS MARKER BOARD
- 104413.A - SEMI-RECESSED FIRE EXTINGUISHER CABINET
- 104416.A - FIRE EXTINGUISHER
- 133123.A - TENSIONED FABRIC STRUCTURE
- 220000.L - ROOF DRAIN
- 260000.A - EXTERIOR LIGHT FIXTURE
- 3231 19.A - ALUMINUM ORNAMENTAL GATE
- 3231 19.B - ALUMINUM ORNAMENTAL FENCING

- GENERAL NOTES**
- 1. ALL CMU EXPOSED TO VIEW TO BE 8X8 SCORED PAINTED CMU BLOCK.
 - 2. ALL EXPOSED STRUCTURAL STEEL TO BE PAINTED.

KEY PLAN

SCO ID #24-28929-02A

NO	REVISION	DATE



625 LYNDALE CT, SUITE F, GREENVILLE, NC 27858 252-355-1048

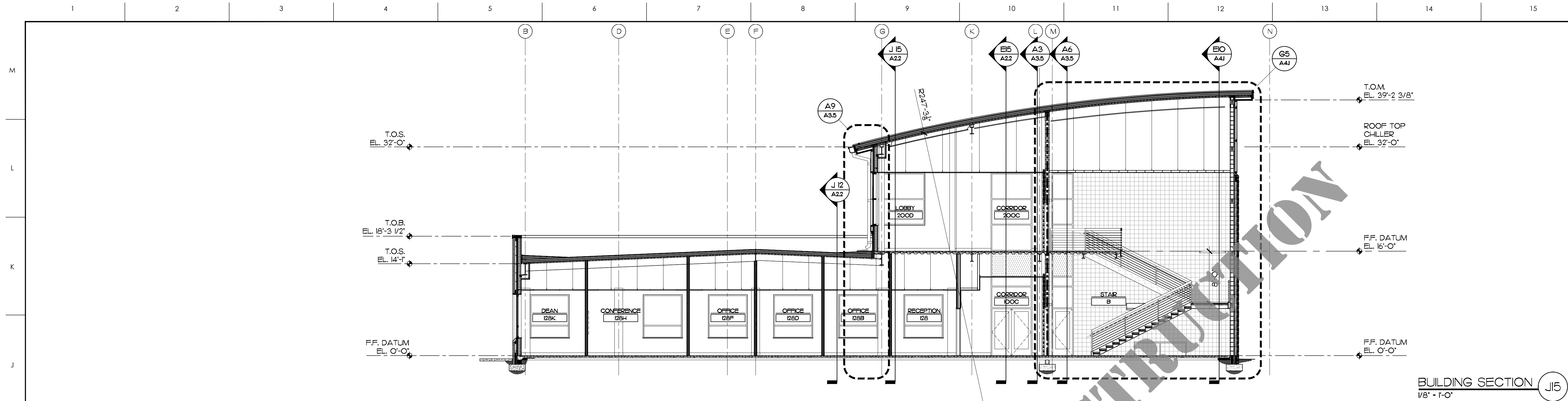
SAMPSON COMMUNITY COLLEGE NURSING & ALLIED HEALTH BUILDING
CLINTON, NC

DRAWING TITLE: **BUILDING SECTIONS**

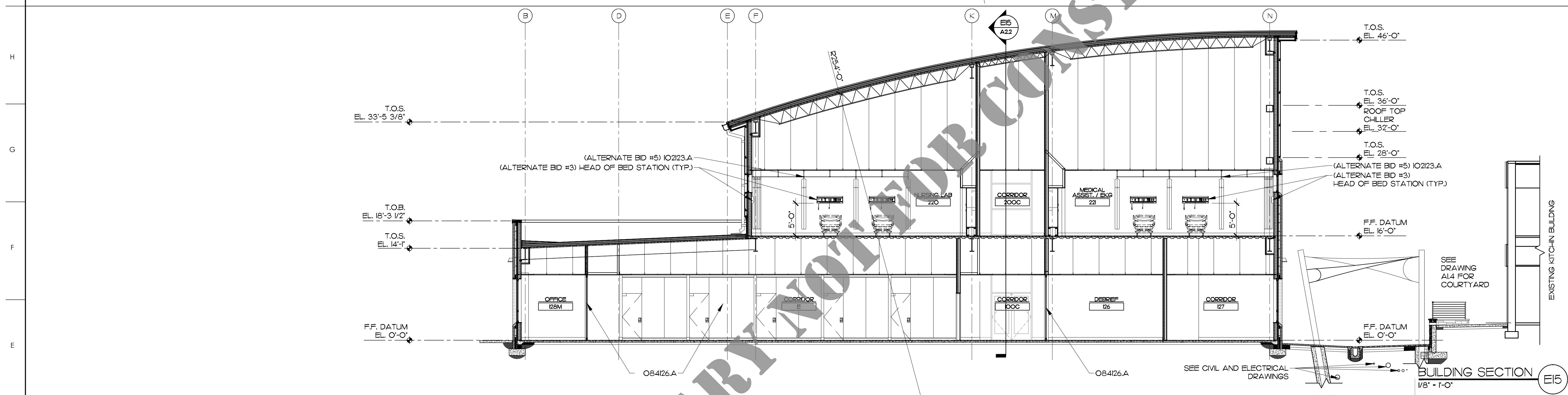
SCALE: 1/8" = 1'-0"

DRAWN: JRH
CHECKED: JKF
DATE: 12-1-2025
PROJECT NO: 2024-12

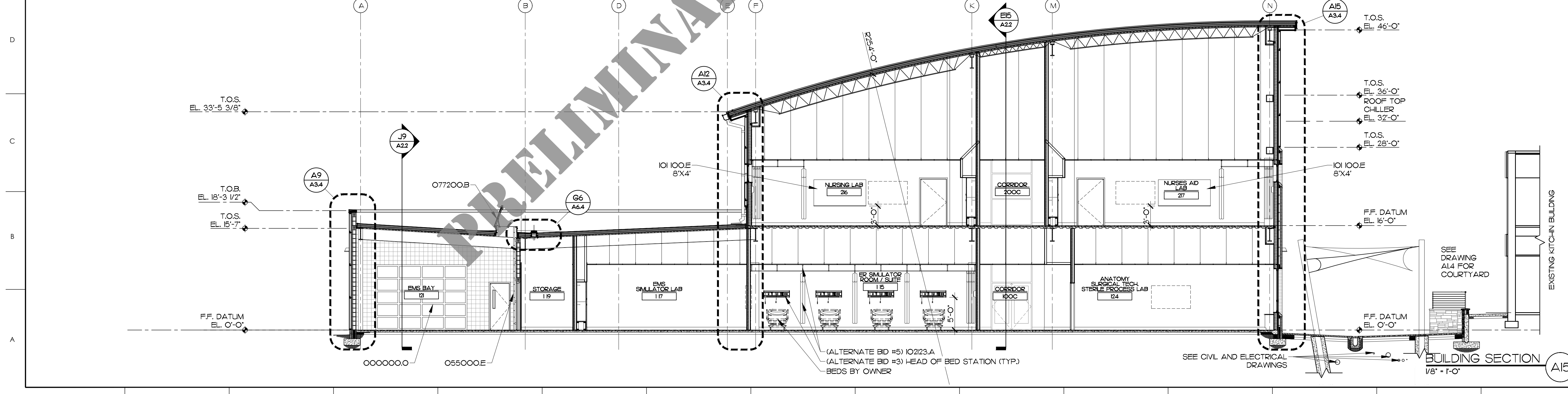
DRAWING NO: **A2.3**



BUILDING SECTION J15
1/8" = 1'-0"



BUILDING SECTION E15
1/8" = 1'-0"



BUILDING SECTION A15
1/8" = 1'-0"

MATERIALS KEYING LEGEND

055000E	- STEEL LADDER
077200B	- ROOF HATCH, 48X30
084126A	- ALL GLASS WALL SYSTEM
101100E	- GLASS MARKER BOARD
102123.A	- CUBICLE AND CURTAIN SYSTEM
260000B	- INTERIOR LIGHT FIXTURE

- GENERAL NOTES**
- 1. ALL CMU EXPOSED TO VIEW TO BE 8X8 SCORED PAINTED CMU BLOCK.
 - 2. ALL EXPOSED STRUCTURAL STEEL TO BE PAINTED.

KEY PLAN

SCO ID #24-28929-02A

NO	REVISION	DATE

JOHN K. FARKAS
REGISTERED ARCHITECT
5922
FOR REVIEW ONLY

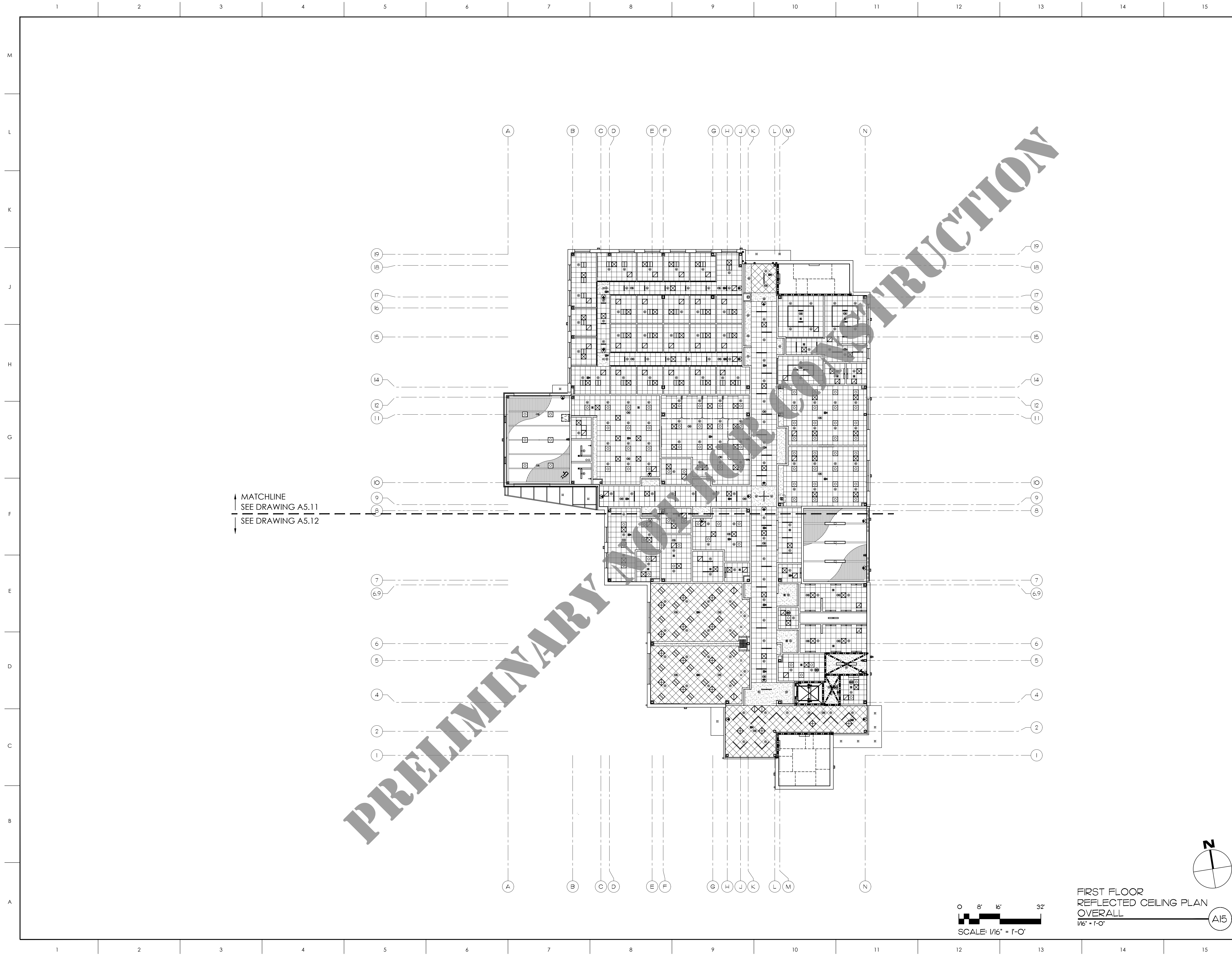
JKF
ARCHITECTURE

625 LYNNDALE CT., SUITE F, GREENVILLE, NC 27658 252-355-1048

SAMPSON COMMUNITY
COLLEGE NURSING & ALLIED
HEALTH BUILDING
CLINTON, NC

BUILDING SECTIONS

SCALE	1/8" = 1'-0"	DRAWING NO.	A2.4
DRAWN	JRH	CHECKED	JKF
DATE	12-1-2025	PROJECT NO.	2024-12

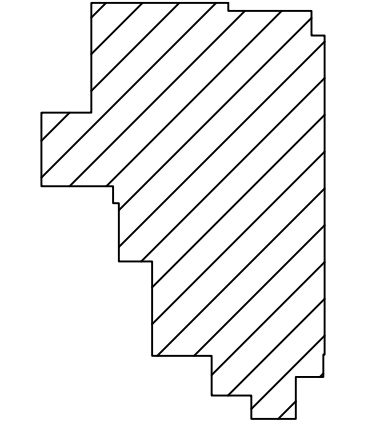


MATERIALS KEYING LEGEND

GENERAL NOTES

----- 1 HR FIRE RATED BARRIER

KEY PLAN



SCO ID #24-28929-02A

NO	REVISION	DATE

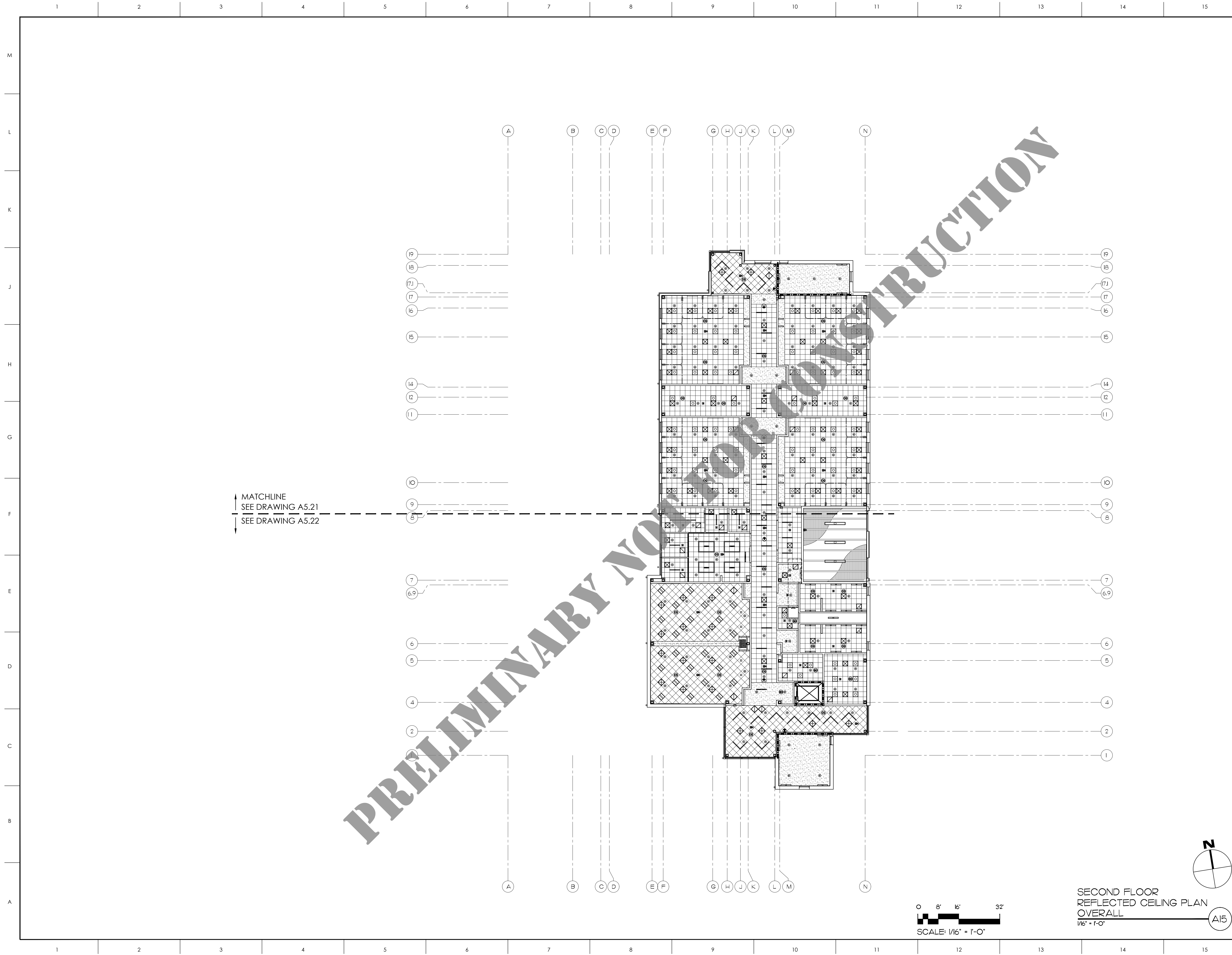
SEAL

JKF
ARCHITECTURE

625 LYNNDALE CT., SUITE F, GREENVILLE, NC 27838 252-355-1048
SAMPSON COMMUNITY COLLEGE NURSING & ALLIED HEALTH BUILDING
 CLINTON, NC

DRAWING TITLE
FIRST FLOOR REFLECTED CEILING PLAN OVERALL

SCALE	1/16" = 1'-0"	DRAWING NO.	A5.1
DRAWN	MCZ		
CHECKED	JKF		
DATE	12-1-2025		
PROJECT NO.	2024-12		

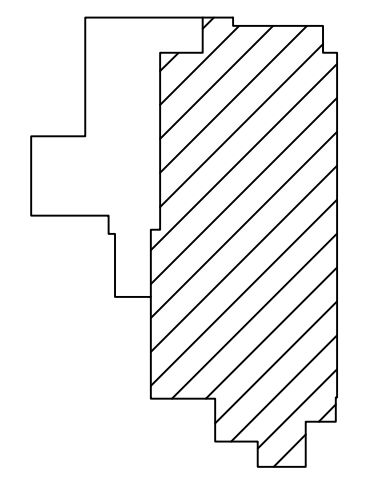


MATERIALS KEYING LEGEND

GENERAL NOTES

----- 1 HR FIRE RATED BARRIER

KEY PLAN



SCO ID #24-28929-02A

NO	REVISION	DATE

SEAL

JKF
ARCHITECTURE

625 LYNNDALE CT., SUITE F, GREENVILLE, NC 27838 252-355-1048
SAMPSON COMMUNITY COLLEGE NURSING & ALLIED HEALTH BUILDING
 CLINTON, NC

DRAWING TITLE
SECOND FLOOR REFLECTED CEILING PLAN OVERALL

SCALE	1/16" = 1'-0"	DRAWING NO	A5.2
DRAWN	JRH		
CHECKED	JKF		
DATE	12-1-2025		
PROJECT NO.	2024-12		