

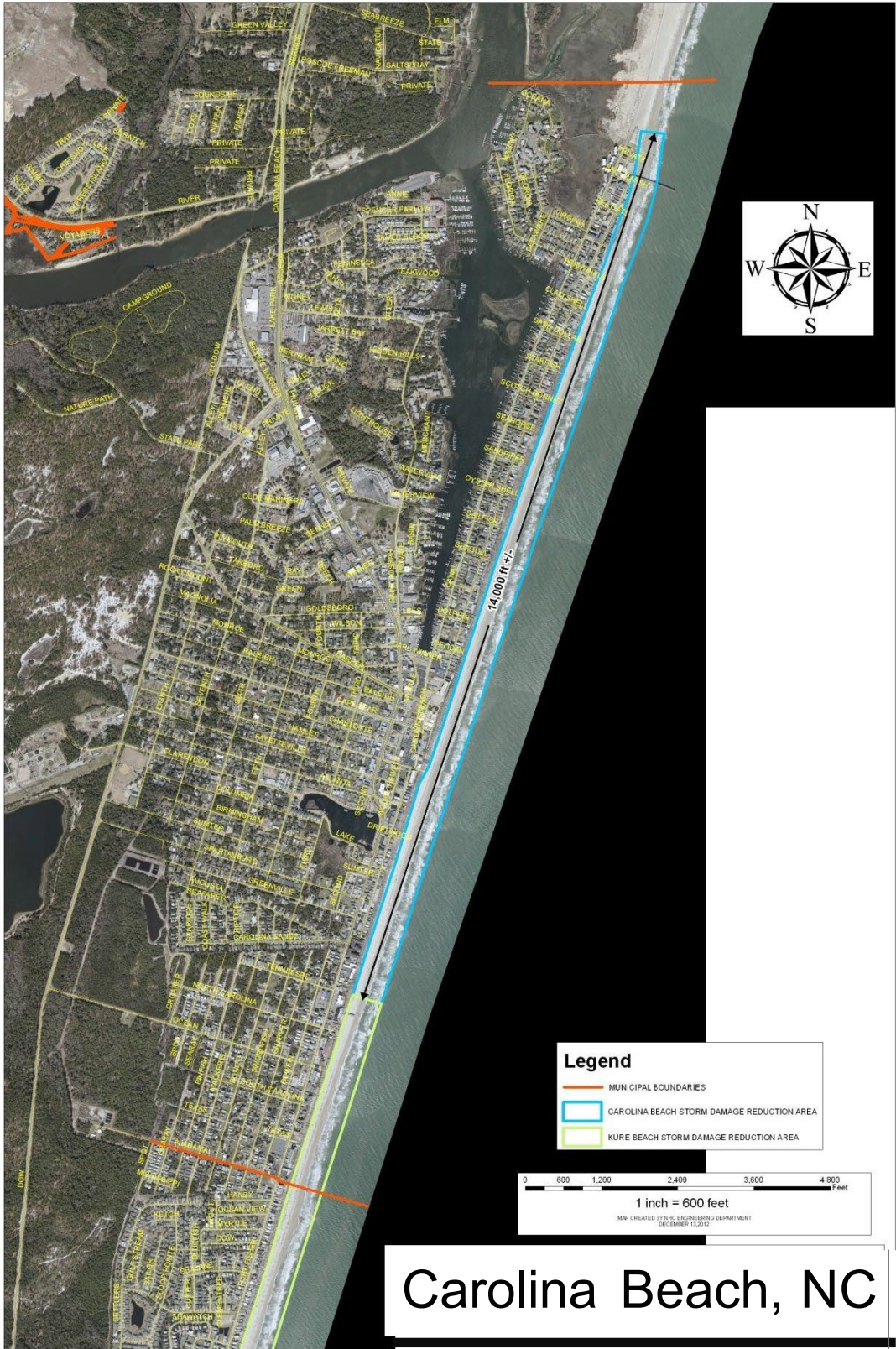
Attachment L
FIGURES

Wrightsville Beach
Masonboro Island
Carolina Beach
Kure Beach
Fort Fisher State Park



Masonboro Island

1,100 1,000 SS
1 inch = 1,100 feet
MAP CREATED BY NCE ENGINEERING DEPARTMENT
MAY 22, 2013
ASD&P, C. 2013





Kure Beach NC



Fort Fisher State Park



Legend

- KURE BEACH SOUTHERN MUNICIPAL BOUNDARY
- NEW HANOVER COUNTY SOUTHERN BOUNDARY
- KURE BEACH STORM DAMAGE REDUCTION AREA
- FORMER CORNCAKE INLET LOCATION (33.91433 N, 77.94408 W)