

Proposal Number: #53-25-011

Vendor: _____

**ATTACHMENT H: SCOPE OF WORK – EXHIBIT 2
DRAWINGS AS OUTLINED BY ANDREW CONSULTING
ENGINEERS**

ANDREW ENGINEERS, P.C.
 BUILDING STRONG COMMUNITIES BLOCK BY BLOCK
 1111 FIVE POINTS AVENUE, SUITE 100
 WILSON, NC 27603
 P: 919.282.5555
 F: 919.282.5555
 www.ace-engineers.com

ANDREW ENGINEERS, P.C.
 1111 FIVE POINTS AVENUE, SUITE 100
 WILSON, NC 27603
 P: 919.282.5555
 F: 919.282.5555
 www.ace-engineers.com

DESIGNED BY: JMK
 CHECKED BY: NWA
 DRAWN BY: JMK

DATE: 1/18/2017

PROJECT: RAMP 721 (MARTIN) CONSTRUCTION

WORKSHEET: SHEET 1 OF 1

DATE: 1/18/2017

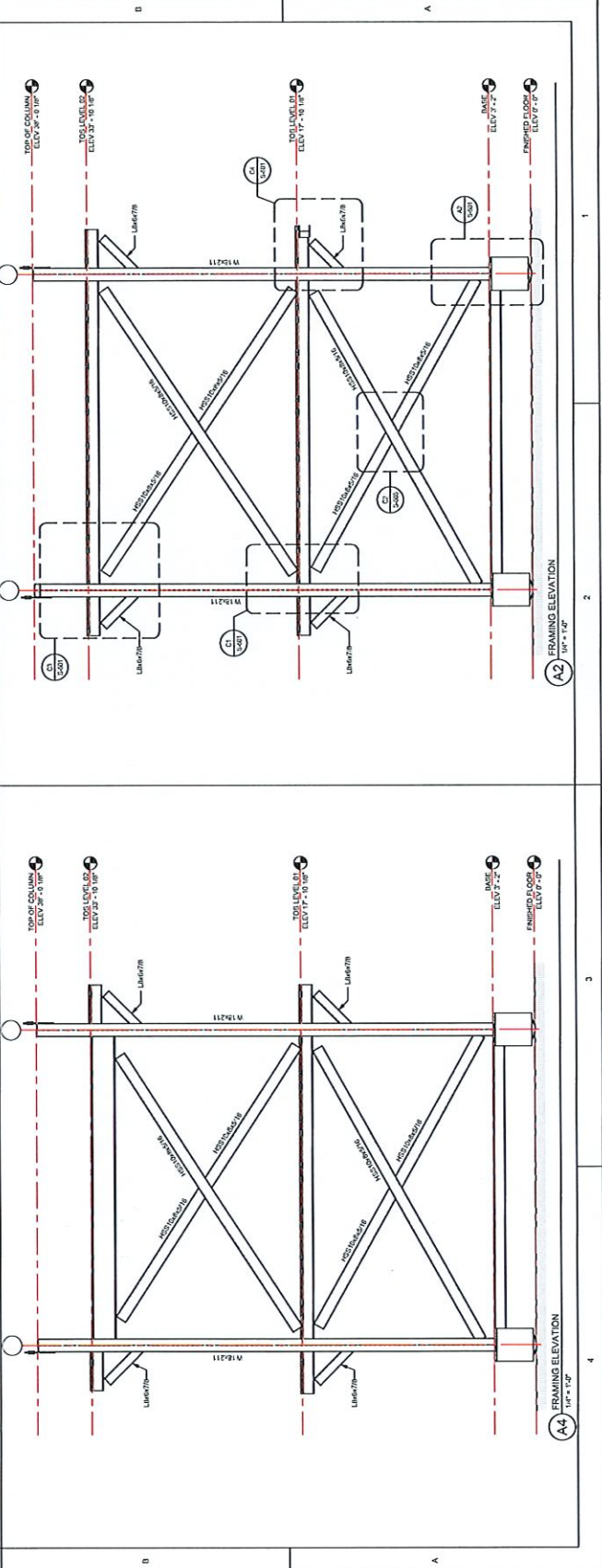
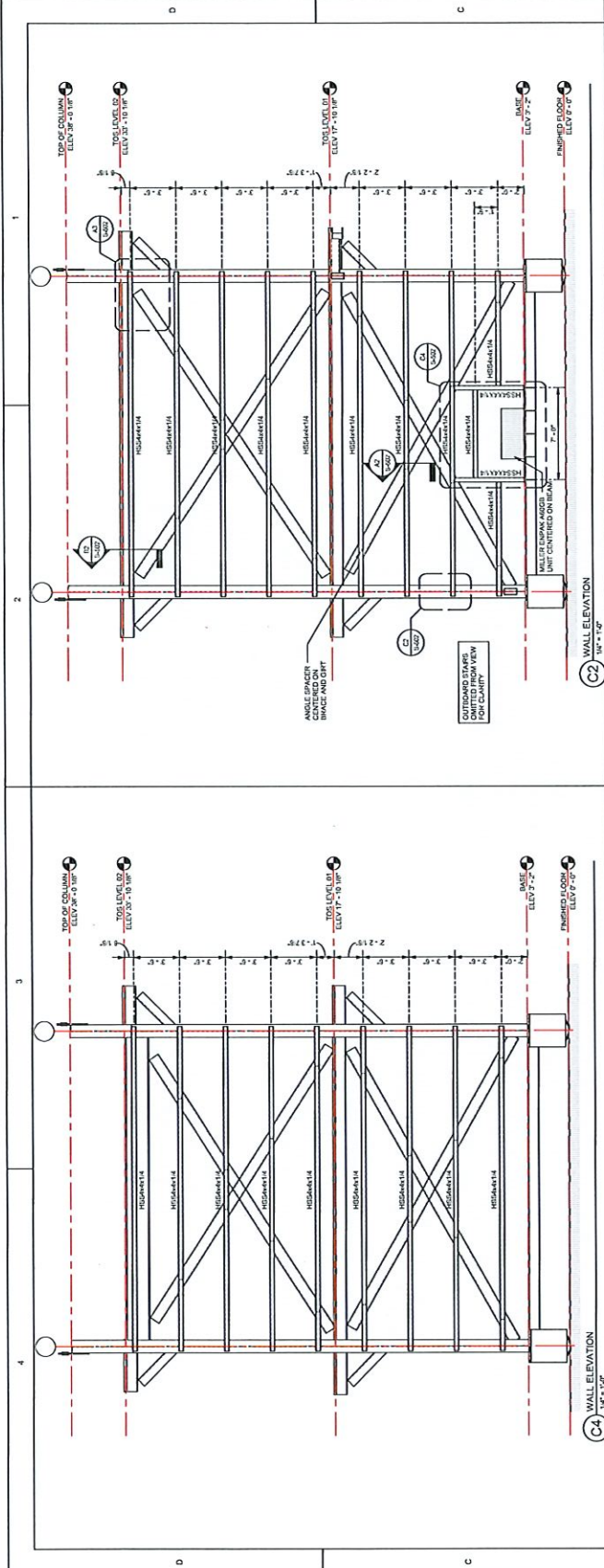
SCALE: 1/4" = 1'-0"

PROJECT NUMBER: 2017
 PORT OF MOREHEAD CITY
 NORTH CAROLINA STATE PORTS AUTHORITY
 TWO NEW 32 GAGE RAIL HOPPERS
 MOREHEAD CITY, NC

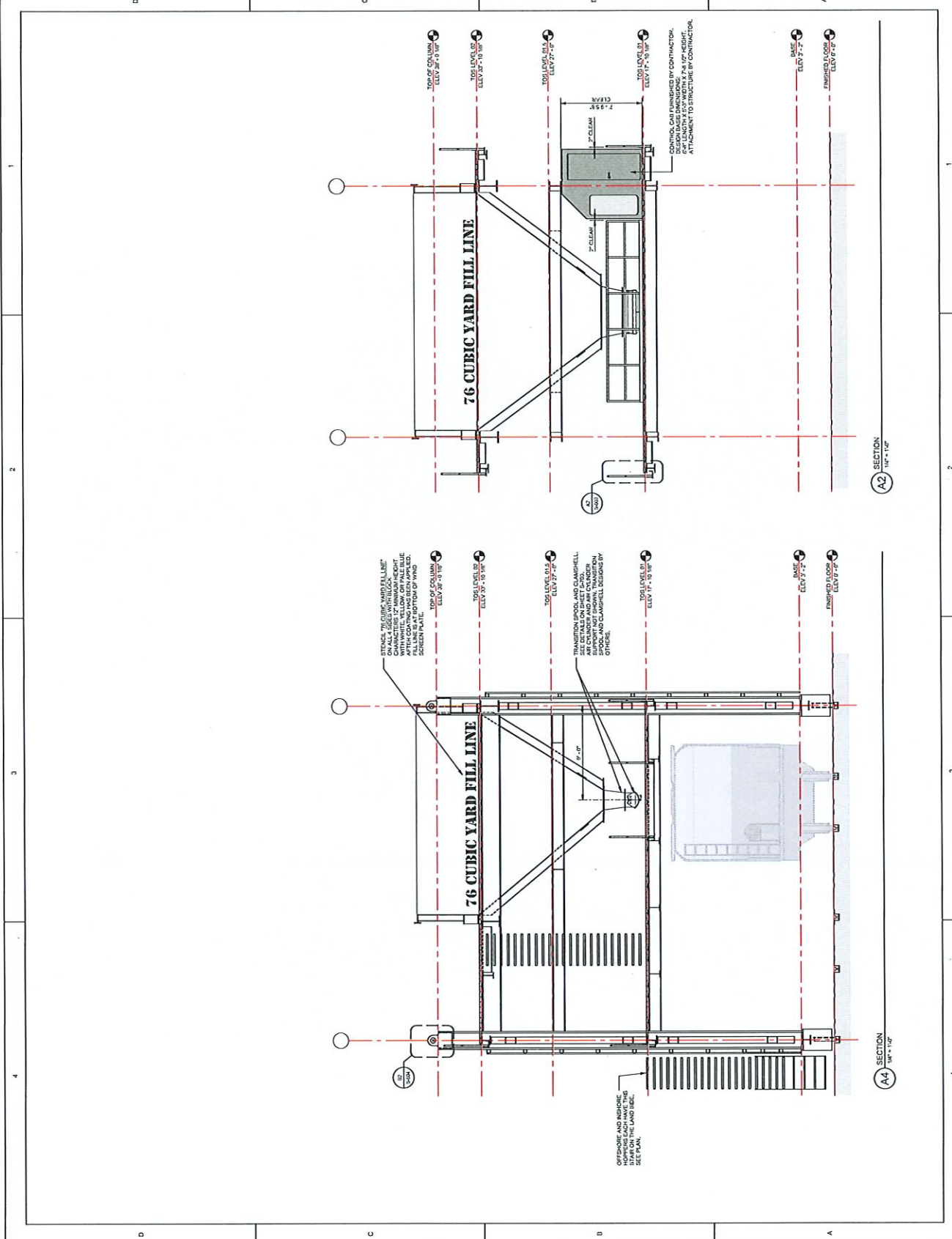
STRUCTURAL
 FRAMING AND WALL
 ELEVATIONS

S-201

000 DOCUMENTS



FOR MORE INFORMATION, PLEASE REFER TO THE PROJECT MANUAL AND SPECIFICATIONS. ALL DIMENSIONS ARE IN FEET AND INCHES UNLESS OTHERWISE NOTED. ALL DIMENSIONS ARE TO FACE UNLESS OTHERWISE NOTED. ALL DIMENSIONS ARE TO FACE UNLESS OTHERWISE NOTED. ALL DIMENSIONS ARE TO FACE UNLESS OTHERWISE NOTED.



ACE
ANDREW ENGINEERS.COM
BUILDING STRONG COMMUNITIES BLOCK BY BLOCK
2815 Parkshire Avenue Suite 200
Wilmington, NC 28413
P: 910.322.5555
F: 910.322.5555

OPEN CONTRACTOR
STATE OF NORTH CAROLINA
P.E. # 3494
C-294

REGISTERED PROFESSIONAL ENGINEER
STATE OF NORTH CAROLINA
P.E. # 3494
C-294

1/17/2017

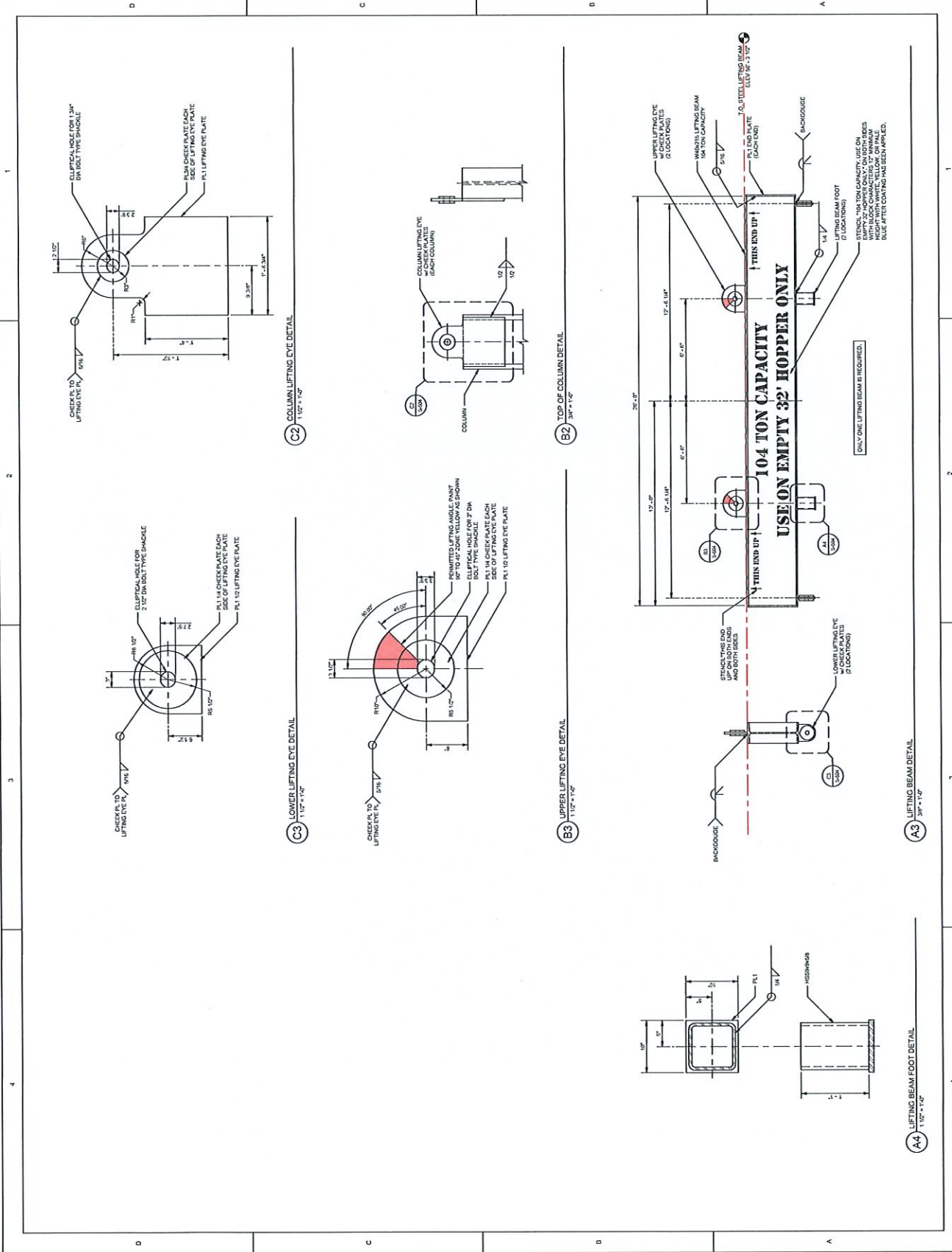
PROJECT NUMBER 24347
PORT OF MOREHEAD CITY
NORTH CAROLINA STATE PORTS AUTHORITY
TWO NEW 32' GAGE RAIL HOPPERS
MOREHEAD CITY, NC

STRUCTURAL SECTIONS

S-301

BID DOCUMENTS

ORIGINAL ISSUE DATE:	02/20/17
REVISION:	
DATE:	
BY:	
DESCRIPTION:	
CHECKED BY:	JMR
DRAWN BY:	JMR



ACE
 ANDREW ENGINEERS, P.C.
 BUILDING STRONG COMMUNITIES BLOCK BY BLOCK
 1100 SOUTH MAIN STREET, SUITE 200
 WILMINGTON, NC 28403
 P: 910.292.5555
 F: 910.292.5555
 ANDREWENGINEERS.COM

OPEN CONTRACT
 ENGINEERS, P.C.
 1100 SOUTH MAIN STREET, SUITE 200
 WILMINGTON, NC 28403
 P: 910.292.5555
 F: 910.292.5555
 ANDREWENGINEERS.COM

DESIGNED BY: JMR
 CHECKED BY: JMR
 DRAWN BY: JMR

DATE: 1/28/2015

PORT OF MOREHEAD CITY
 TWO NEW 32' GAGE RAIL HOPPERS
 NORTH CAROLINA STATE PORTS AUTHORITY
 PROJECT NUMBER: 24247

STRUCTURAL
 DETAILS

S-504

180 DOCUMENTS

ACE
ANDREW ENGINEERS, P.C.
 BUILDING STRONG COMMUNITIES BLOCK BY BLOCK
 3111 Parkside Plaza, Suite 300
 Wilmington, NC 28403
 P 910.222.5555
 F 910.222.5555
 www.ace-engineers.com

ANDREW ENGINEERS, P.C.
 PROFESSIONAL SEAL
 STATE OF NORTH CAROLINA
 LICENSE NO. 35084
 EXPIRES 12/31/2017

ANDREW ENGINEERS, P.C.
 PROFESSIONAL SEAL
 STATE OF NORTH CAROLINA
 LICENSE NO. 35084
 EXPIRES 12/31/2017

DESIGNED BY: JWR
 CHECKED BY: NWA
 DRAWN BY: JWR

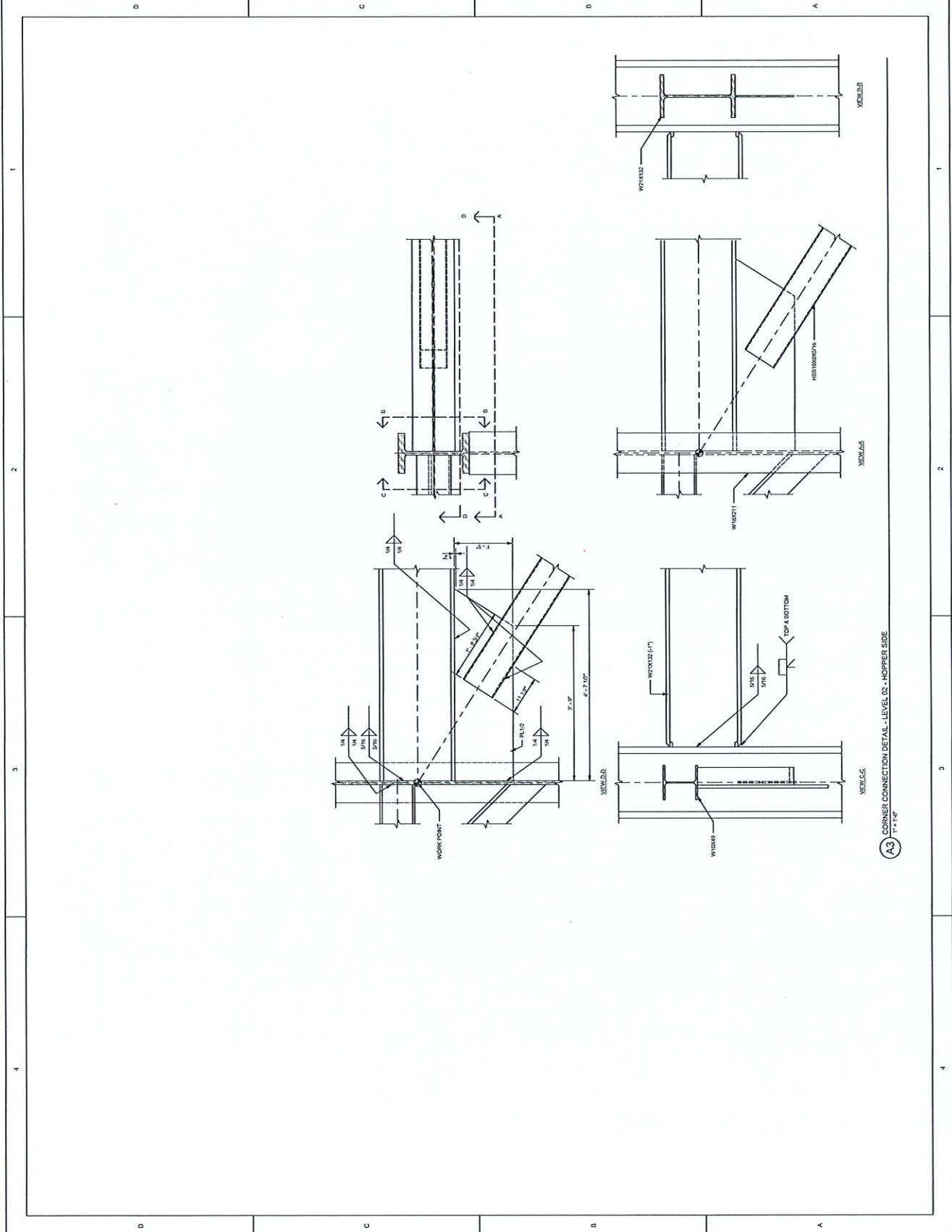
ISSUANCE DATE: 07/2017

PROJECT NUMBER: 24217
 PORT OF MOREHEAD CITY
 NORTH CAROLINA STATE PORTS AUTHORITY
 TWO NEW 32' GAGE RAIL HOPPERS
 MOREHEAD CITY, NC

CONNECTION
 DETAILS

S-507

100 DOCUMENTS



A2 CORNER CONNECTION DETAIL - LEVEL 02 - HOPPER SIDE
 1" = 1'-0"

