

# GENERATOR SYSTEM SPECIFICATIONS

FOR



SUB 7  
218 Sutton Rd  
Rocky Mount, NC 27801



**CONTACT:**

**Joey Cascell**  
Energy Services Manager  
City of Rocky Mount  
Energy Resources Department  
Cell: (252) 343-3217  
joey.cascell@rockymountnc.gov

**PROJECT SHEET INDEX**

SHEET NUMBER	DESCRIPTION
G1	COVER PAGE & CONTACT INFORMATION
E2	RISER DIAGRAMS
E3	SITE REFERENCE PLAN
E4	EQUIPMENT LAYOUT PLAN
E4.1	CONDUIT PLAN
E4.2	GROUND GRID PLAN
E5	GROUNDING DIAGRAM
E7	PAD AND BOLLARD DETAILS



jbaker@oakcityengineering.com

ROCKY MOUNT  
ENERGY RESOURCES  
THE CENTER OF IT ALL



City of Rocky Mount  
331 S. Franklin St  
P.O. Box 1180  
Rocky Mount, NC 27802  
(252) 972-1272  
energyspecialist@rockymountnc.gov



PROJECT SITE  
SUB 7  
218 Sutton Rd  
Rocky Mount, NC 27801

REVISION HISTORY		
REV	REVISION ISSUE	DATE
1	ISSUED FOR REVIEW	11/2/2025

DESIGNED BY City of Rocky Mount	REVIEWED BY City of Rocky Mount
DRAWN BY OAK CITY ENGINEERING	APPROVED BY City of Rocky Mount

SHEET TITLE  
COVER PAGE &  
CONTACT INFORMATION

DRAWING NUMBER  
G1

THIS DRAWING IS 11" X 17" AT FULL SIZE  
SITE ID: 251009-01 SHEET 1 OF 8



jbaker@oakcityengineering.com

ROCKY MOUNT  
ENERGY RESOURCES  
THE CENTER OF IT ALL



City of Rocky Mount  
331 S. Franklin St  
P.O. Box 1180  
Rocky Mount, NC 27802  
(252) 972-1272  
energyspecialist@rockymountnc.gov



PROJECT SITE  
SUB 7  
218 Sutton Rd  
Rocky Mount, NC 27801

REVISION HISTORY		
REV	REVISION ISSUE	DATE
1	ISSUED FOR REVIEW	11/2/2025

DESIGNED BY City of Rocky Mount	REVIEWED BY City of Rocky Mount
DRAWN BY OAK CITY ENGINEERING	APPROVED BY City of Rocky Mount

SHEET TITLE  
SYSTEM  
ONLINE

DRAWING NUMBER  
E2

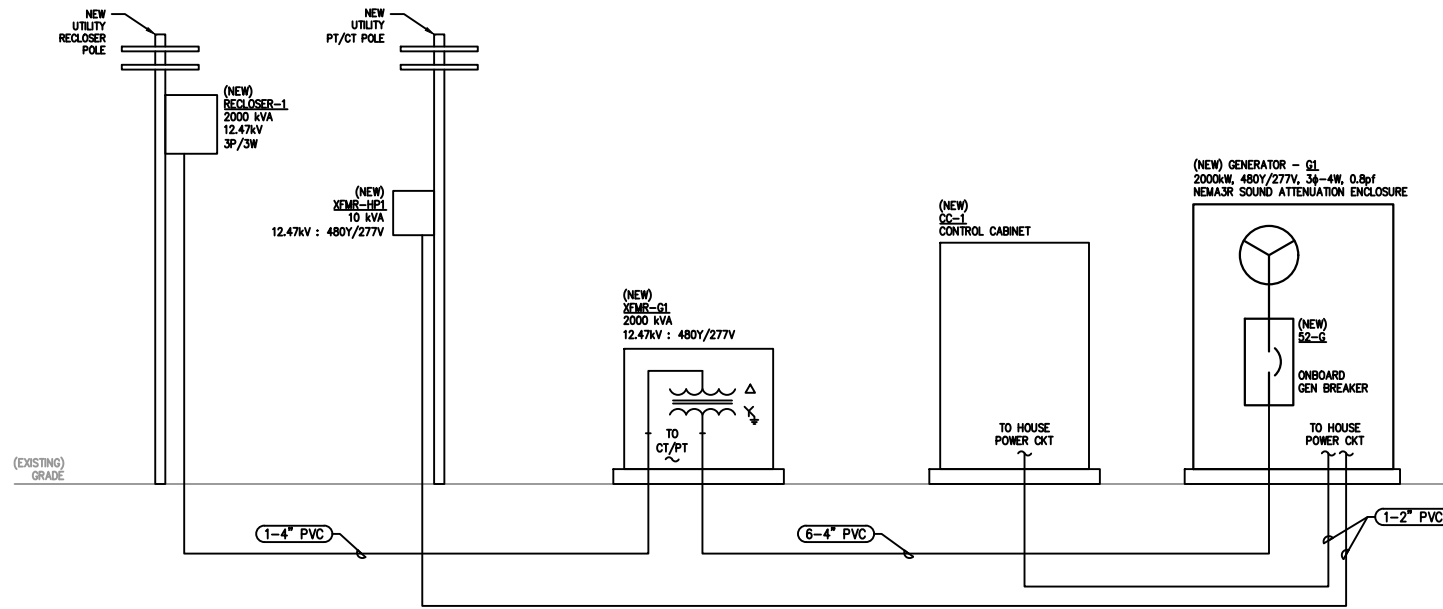
THIS DRAWING IS 11" X 17" AT FULL SIZE  
SITE ID: 251009-01 SHEET 2 OF 8

LEGEND	
	EXISTING WIRING/EQUIPMENT
	WIRING/EQUIPMENT BY OTHERS
	NEW WIRING/EQUIPMENT
	NEW CONTROL WIRING/EQUIPMENT
	WIRING/EQUIPMENT TO BE REMOVED

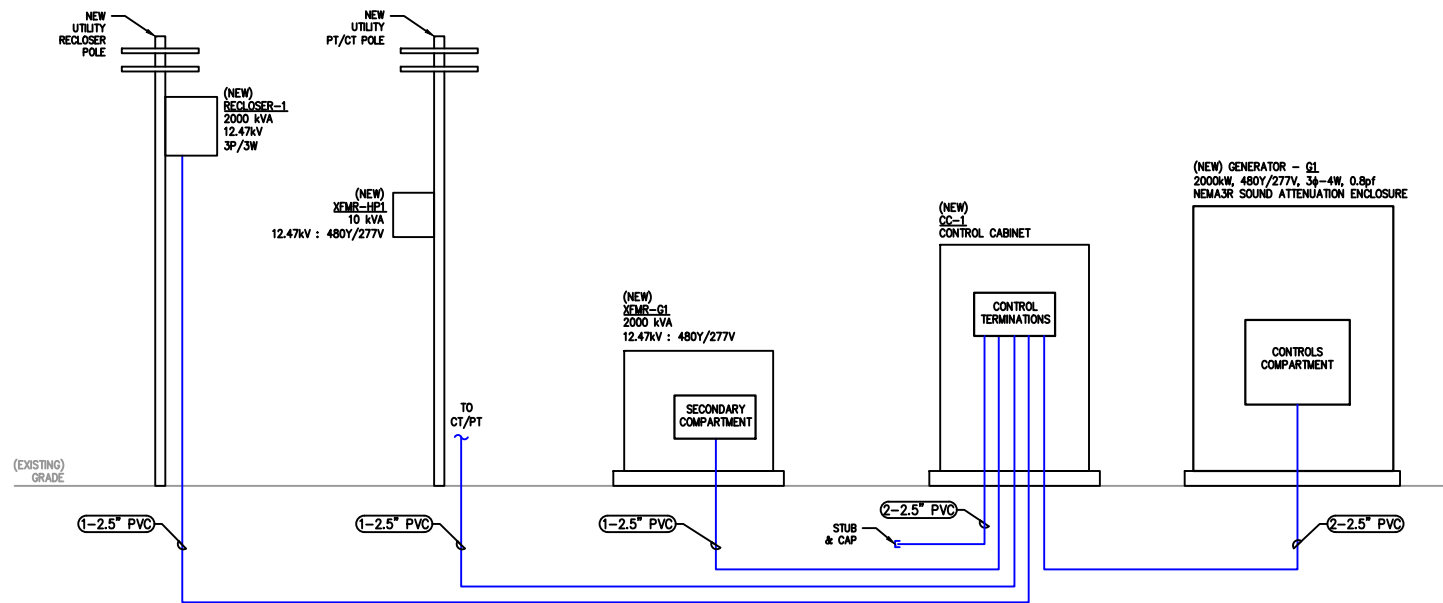
GENERAL NOTES  
1. SEE SHEET E5 FOR GROUNDING DETAIL.

FEEDER TAG	COPPER FEEDER SCHEDULE			ALUMINUM FEEDER SCHEDULE			
	CONDUIT (#-SIZE)	CONDUCTORS (EACH CONDUIT)	GROUND	FEEDER TAG	CONDUIT (#-SIZE)	CONDUCTORS (EACH CONDUIT)	GROUND

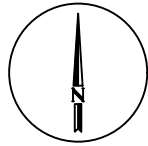
FEEDER SCHEDULE GENERAL NOTES:  
1. CONDUIT SIZES ARE MINIMUM SIZES BASED ON SCHEDULE 40 PVC. UPSIZE CONDUIT AS NEEDED IF ANOTHER APPROVED CONDUIT TYPE IS USED.  
2. CONDUCTOR SIZES ARE BASED ON 75°C COLUMN OF NEC TABLE 310.15(B)(16) COPPER (CU) AND ALUMINUM (AL) WITH THHN/THWN-2 INSULATION.  
3. CONDUIT ROUTING AS DEPICTED ON THE DRAWINGS IS STRICTLY DIAGRAMMATIC. THE INSTALLING CONTRACTOR SHALL ROUTE CONDUITS IN AN EFFECTIVE AND SAFE MANNER BASED ON EXISTING SITE CONDITIONS THAT MEET THE REQUIREMENTS OF THE NEC, CURRENT ADOPTED EDITION.



RISER DIAGRAM - POWER  
SCALE: DIAGRAMMATIC  
1  
E2



RISER DIAGRAM - COMMS  
SCALE: DIAGRAMMATIC  
2  
E2



0 25' 50'



jbaker@oakcityengineering.com

ROCKY MOUNT  
ENERGY RESOURCES  
THE CENTER OF IT ALL



City of Rocky Mount

331 S. Franklin St  
P.O. Box 1180  
Rocky Mount, NC 27802  
(252) 972-1272  
energyspecialist@rockymountnc.gov



PROJECT SITE

SUB 7  
218 Sutton Rd  
Rocky Mount, NC 27801

REVISION HISTORY

REV	REVISION ISSUE	DATE
1	ISSUED FOR REVIEW	11/2/2025

DESIGNED BY City of Rocky Mount	REVIEWED BY City of Rocky Mount
DRAWN BY OAK CITY ENGINEERING	APPROVED BY City of Rocky Mount

SHEET TITLE

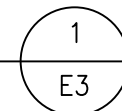
SITE REFERENCE PLAN

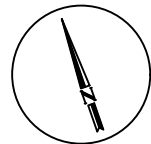
DRAWING NUMBER  
E3

THIS DRAWING IS 11" X 17" AT FULL SIZE  
SITE ID: 251009-01 SHEET 3 OF 8

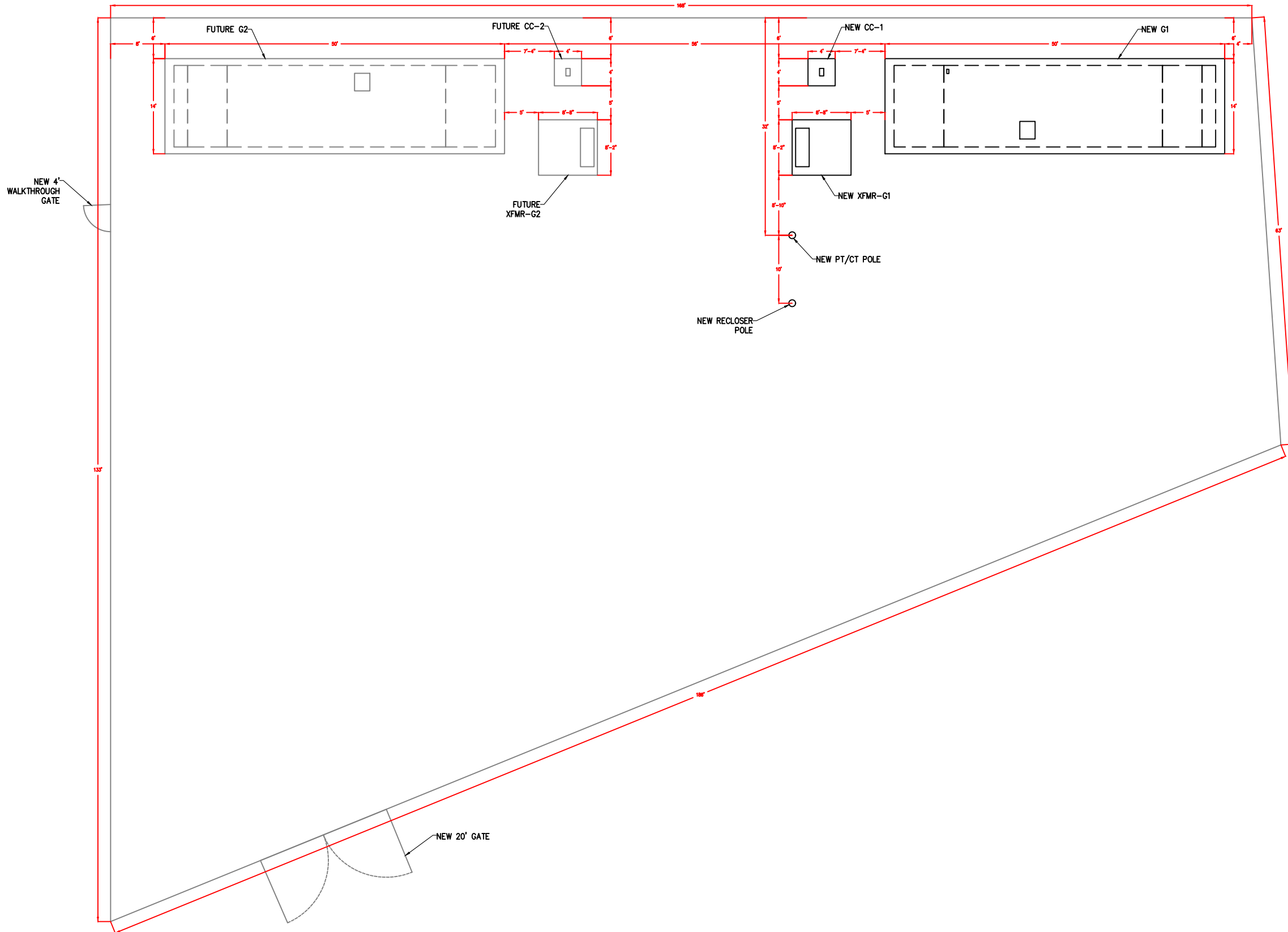
SITE REF. PLAN

SCALE: 1" = 50'-0"





0 8' 16'



ENLARGED PARTIAL SITE PLAN

1  
E4

SCALE: 1" = 16'-0"



jbaker@oakcityengineering.com

ROCKY MOUNT  
ENERGY RESOURCES  
THE CENTER OF IT ALL



City of Rocky Mount

331 S. Franklin St  
P.O. Box 1180  
Rocky Mount, NC 27802  
(252) 972-1272  
energyspecialist@rockymountnc.gov



PROJECT SITE  
  
SUB 7  
218 Sutton Rd  
Rocky Mount, NC 27801

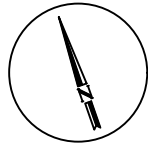
REVISION HISTORY		
REV	REVISION ISSUE	DATE
1	ISSUED FOR REVIEW	11/2/2025

DESIGNED BY City of Rocky Mount	REVIEWED BY City of Rocky Mount
DRAWN BY OAK CITY ENGINEERING	APPROVED BY City of Rocky Mount

SHEET TITLE  
ENLARGED PARTIAL  
SITE PLAN

DRAWING NUMBER  
E4

THIS DRAWING IS 11" X 17" AT FULL SIZE  
SITE ID: 251009-01 SHEET 4 OF 8



LEGEND	
	EXISTING WIRING/EQUIPMENT
	WIRING/EQUIPMENT BY OTHERS
	NEW WIRING/EQUIPMENT
	NEW CONTROL WIRING/EQUIPMENT
	WIRING/EQUIPMENT TO BE REMOVED

COPPER FEEDER SCHEDULE				ALUMINUM FEEDER SCHEDULE			
FEEDER TAG	CONDUIT (#-SIZE)	CONDUCTORS (EACH CONDUIT)		FEEDER TAG	CONDUIT (#-SIZE)	CONDUCTORS (EACH CONDUIT)	
		PHASE	GROUND			PHASE	GROUND

**FEEDER SCHEDULE GENERAL NOTES:**

- CONDUIT SIZES ARE MINIMUM SIZES BASED ON SCHEDULE 40 PVC. UPSIZE CONDUIT AS NEEDED IF ANOTHER APPROVED CONDUIT TYPE IS USED.
- CONDUCTOR SIZES ARE BASED ON 75°C COLUMN OF NEC TABLE 310.15(B)(16) COPPER (CU) AND ALUMINUM (AL) WITH THHN/THWN-2 INSULATION.
- CONDUIT ROUTING AS DEPICTED ON THE DRAWINGS IS STRICTLY DIAGRAMMATIC. THE INSTALLING CONTRACTOR SHALL ROUTE CONDUITS IN AN EFFECTIVE AND SAFE MANNER BASED ON EXISTING SITE CONDITIONS THAT MEET THE REQUIREMENTS OF THE NEC, CURRENT ADOPTED EDITION.



jbaker@oakcityengineering.com

**ROCKY MOUNT**  
ENERGY RESOURCES  
THE CENTER OF IT ALL



**City of Rocky Mount**  
331 S. Franklin St  
P.O. Box 1180  
Rocky Mount, NC 27802  
(252) 972-1272  
energyspecialist@rockymountnc.gov



**PROJECT SITE**  
  
SUB 7  
218 Sutton Rd  
Rocky Mount, NC 27801

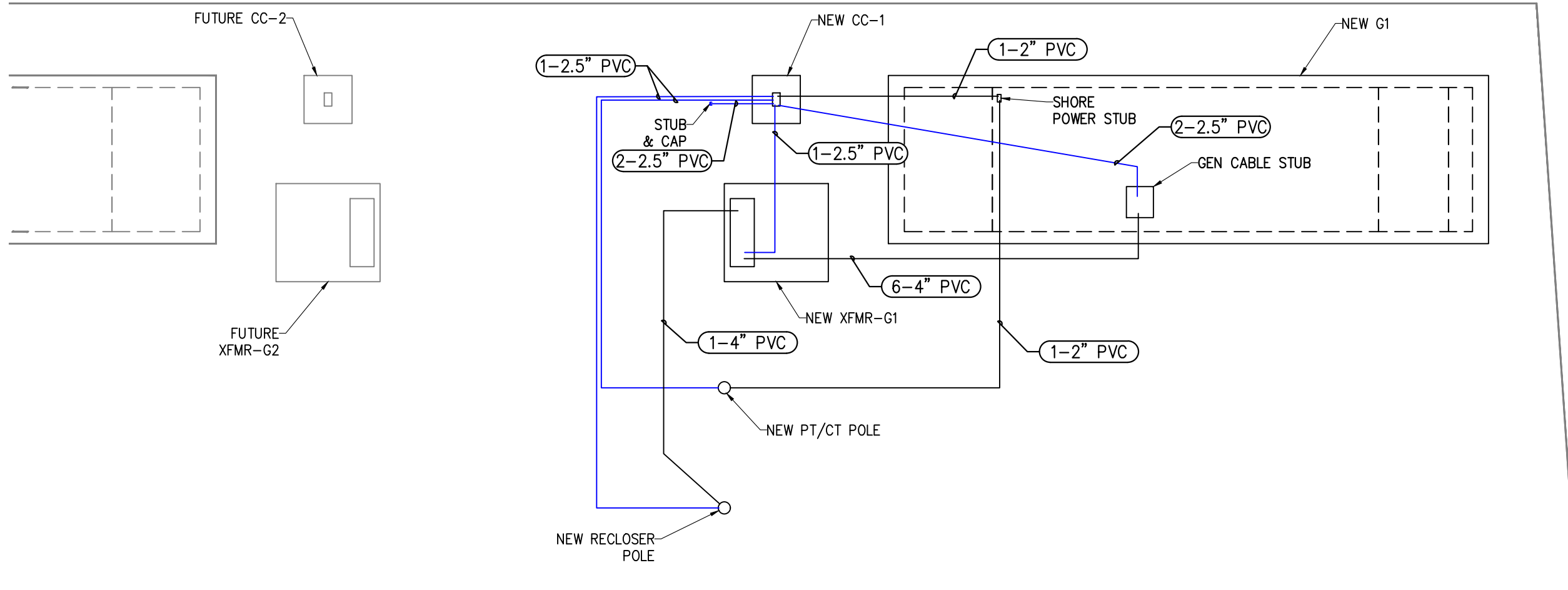
REVISION HISTORY		
REV	REVISION ISSUE	DATE
1	ISSUED FOR REVIEW	11/2/2025

DESIGNED BY City of Rocky Mount	REVIEWED BY City of Rocky Mount
DRAWN BY OAK CITY ENGINEERING	APPROVED BY City of Rocky Mount

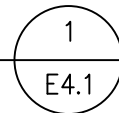
**SHEET TITLE**  
ENLARGED PARTIAL  
SITE PLAN

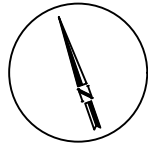
**DRAWING NUMBER**  
E4.1

THIS DRAWING IS 11" X 17" AT FULL SIZE  
SITE ID: 251009-01 SHEET 5 OF 8



**CONDUIT PLAN**  
SCALE: 1" = 10'-0"





0 5' 10'

LEGEND	
	EXISTING WIRING/EQUIPMENT
	WIRING/EQUIPMENT BY OTHERS
	NEW WIRING/EQUIPMENT
	NEW CONTROL WIRING/EQUIPMENT
	WIRING/EQUIPMENT TO BE REMOVED



jbaker@oakcityengineering.com

**ROCKY MOUNT**  
ENERGY RESOURCES  
THE CENTER OF IT ALL



**City of Rocky Mount**  
331 S. Franklin St  
P.O. Box 1180  
Rocky Mount, NC 27802  
(252) 972-1272  
energyspecialist@rockymountnc.gov



**PROJECT SITE**  
  
SUB 7  
218 Sutton Rd  
Rocky Mount, NC 27801

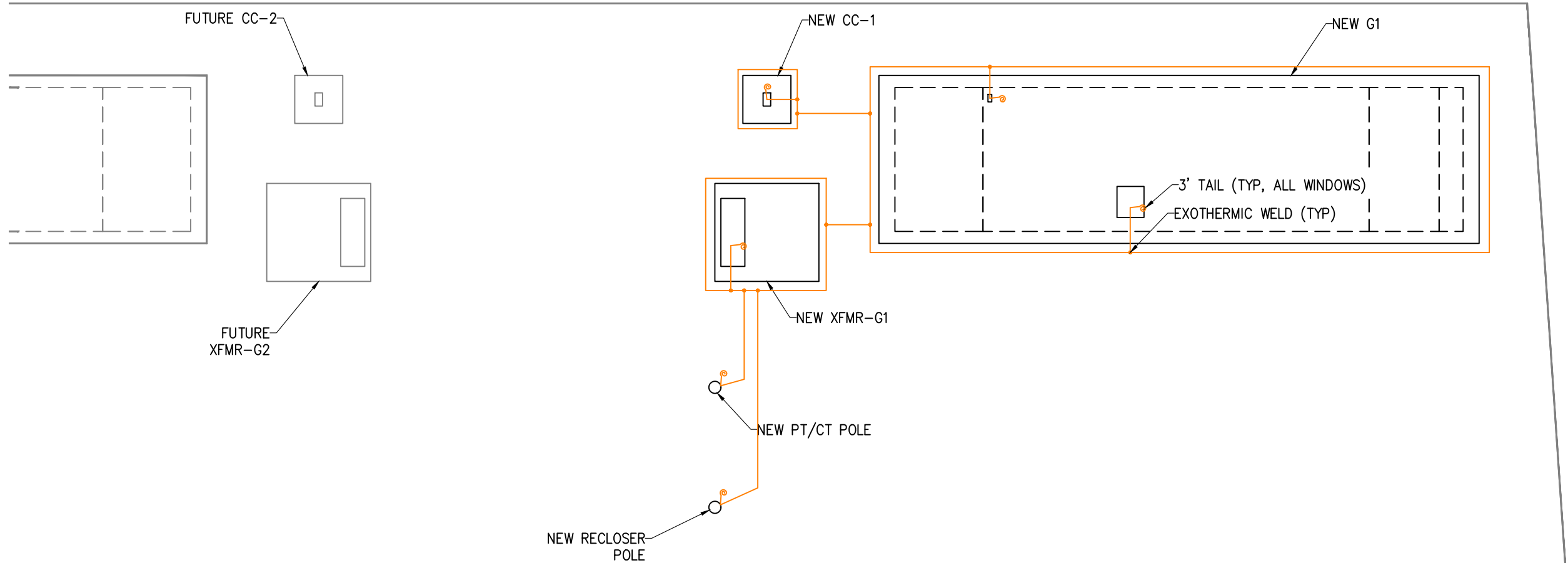
REVISION HISTORY		
REV	REVISION ISSUE	DATE
1	ISSUED FOR REVIEW	11/2/2025

DESIGNED BY City of Rocky Mount	REVIEWED BY City of Rocky Mount
DRAWN BY OAK CITY ENGINEERING	APPROVED BY City of Rocky Mount

**SHEET TITLE**  
ENLARGED PARTIAL  
SITE PLAN

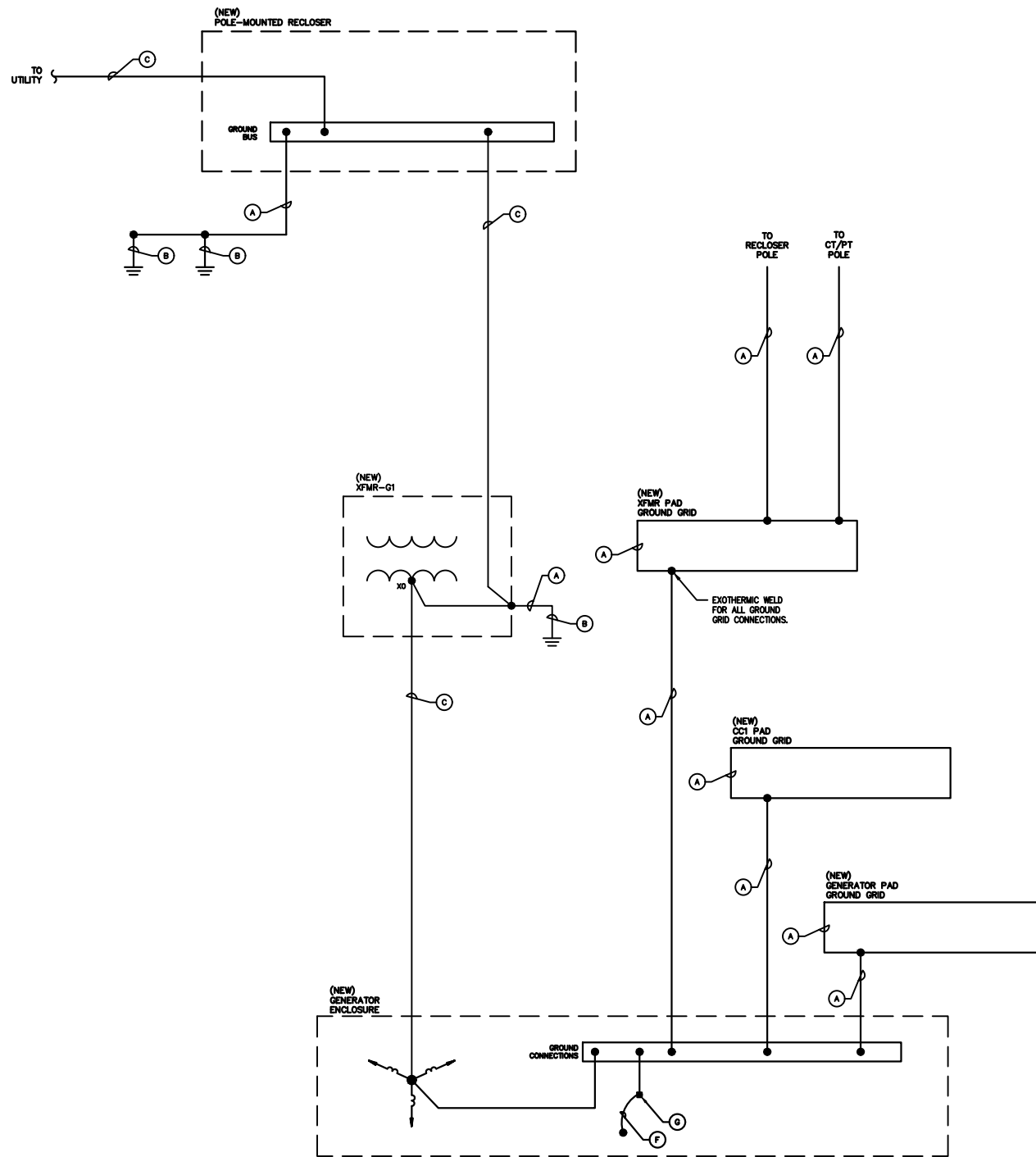
**DRAWING NUMBER**  
E4.2

THIS DRAWING IS 11" X 17" AT FULL SIZE  
SITE ID: 251009-01 SHEET 6 OF 8



**GROUND GRID PLAN**  
SCALE: 1" = 10'-0"

1  
E4.2



GROUNDING PLAN

SCALE: DIAGRAMMATIC

1  
E5

LEGEND

- EXISTING WIRING/EQUIPMENT
- WIRING/EQUIPMENT BY OTHERS
- NEW WIRING/EQUIPMENT
- NEW CONTROL WIRING/EQUIPMENT
- WIRING/EQUIPMENT TO BE REMOVED

REFERENCED SHEET NOTES

- (A) #4/0 BARE CU GROUNDING ELECTRODE CONDUCTOR
- (B) 3/4" x 10' CU GROUND ROD, MIN. 6' APART
- (C) GROUNDED NEUTRAL CONDUCTOR
- (D) --
- (E) --
- (F) #4/0 BARE CU GROUNDING ELECTRODE CONDUCTOR TO REBAR IN PAD
- (G) GENERATOR ENCLOSURE GROUND LUG



jbaker@oakcityengineering.com

ROCKY MOUNT  
ENERGY RESOURCES  
THE CENTER OF IT ALL



City of Rocky Mount

331 S. Franklin St  
P.O. Box 1180  
Rocky Mount, NC 27802  
(252) 972-1272  
energyspecialist@rockymountnc.gov



PROJECT SITE

SUB 7  
218 Sutton Rd  
Rocky Mount, NC 27801

REVISION HISTORY

REV	REVISION ISSUE	DATE
1	ISSUED FOR REVIEW	11/2/2025

DESIGNED BY City of Rocky Mount	REVIEWED BY City of Rocky Mount
DRAWN BY OAK CITY ENGINEERING	APPROVED BY City of Rocky Mount

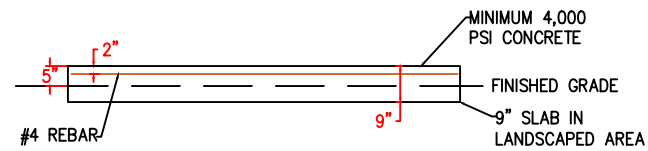
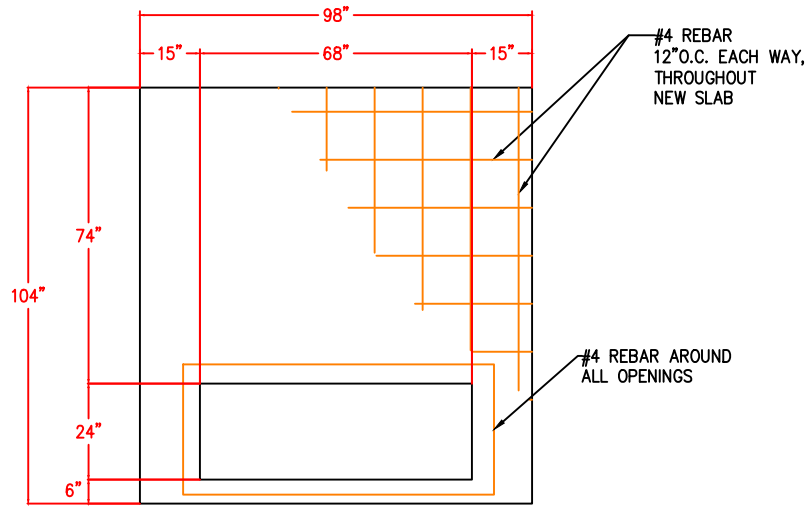
SHEET TITLE

GROUNDING PLAN

DRAWING NUMBER

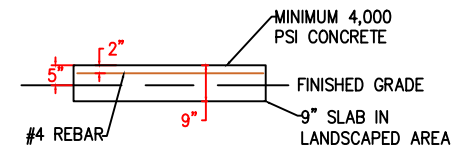
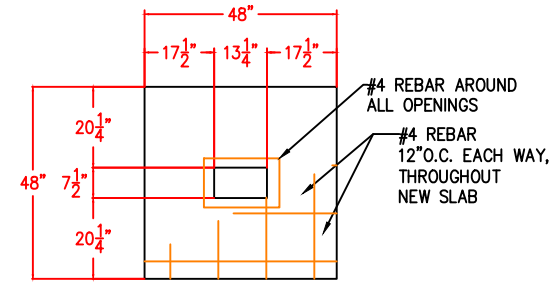
E5

THIS DRAWING IS 11" X 17" AT FULL SIZE  
SITE ID: 251009-01 SHEET 7 OF 8



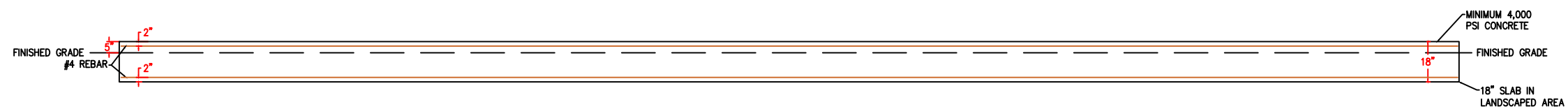
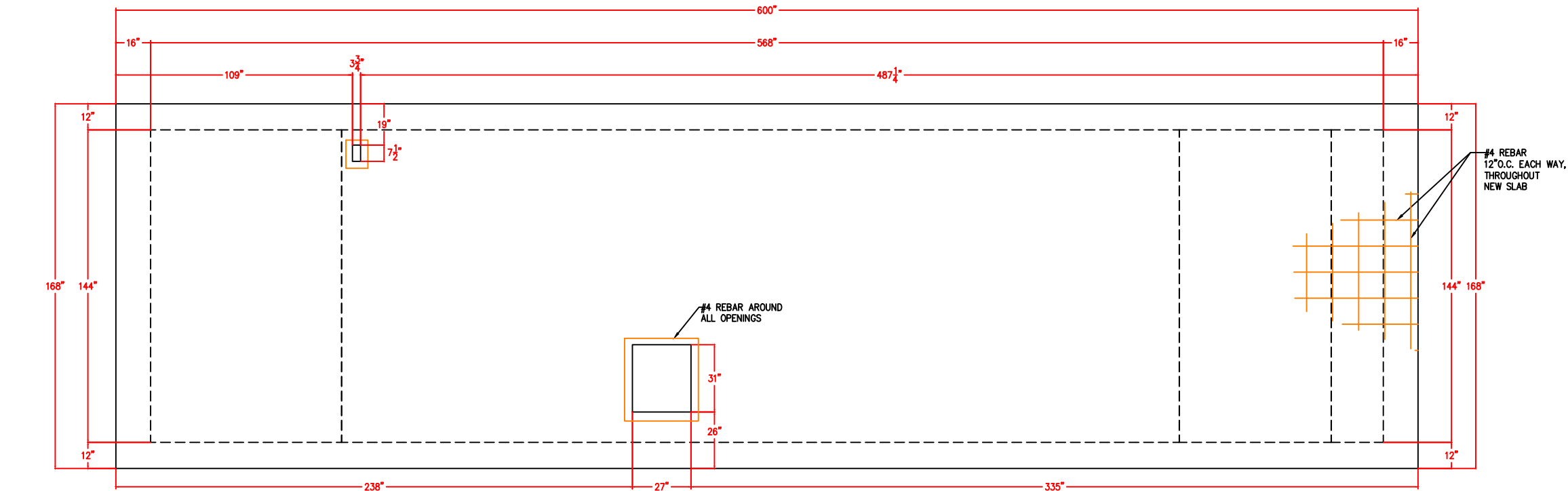
XFMR PAD DETAIL  
SCALE: 1" = 4'-0"

2  
E7



CC1 PAD DETAIL  
SCALE: 1" = 4'-0"

3  
E7



GENERATOR PAD DETAIL  
SCALE: 1" = 5'-0"

1  
E7

GENERAL NOTES

- PAD LAYOUT DIMENSIONS ARE MINIMUMS AND CAN BE INCREASED BASED ON SITE CONDITIONS OR CONTRACTOR PREFERENCES.
- CONTRACTOR CAN CHOOSE TO JOIN MULTIPLE PADS TOGETHER.



jbaker@oakcityengineering.com

ROCKY MOUNT  
ENERGY RESOURCES  
THE CENTER OF IT ALL



City of Rocky Mount

331 S. Franklin St  
P.O. Box 1180  
Rocky Mount, NC 27802  
(252) 972-1272  
energyspecialist@rockymountnc.gov



PROJECT SITE

SUB 7  
218 Sutton Rd  
Rocky Mount, NC 27801

REVISION HISTORY

REV	REVISION ISSUE	DATE
1	ISSUED FOR REVIEW	11/2/2025

DESIGNED BY City of Rocky Mount	REVIEWED BY City of Rocky Mount
DRAWN BY OAK CITY ENGINEERING	APPROVED BY City of Rocky Mount

SHEET TITLE  
PAD & BOLLARD  
DETAILS

DRAWING NUMBER  
E7

THIS DRAWING IS 11" X 17" AT FULL SIZE  
SITE ID: 251009-01 SHEET 8 OF 8