



5410 Trinity Road  
Suite 102  
Raleigh, NC 27607

P 919.866.4951  
F 919.859.5663  
[www.timmons.com](http://www.timmons.com)

April 15, 2026

Eric J. Pearson  
Town of Morrisville  
260 Town Hall Drive, Suite B  
Morrisville, NC 27560

**Re: No Buffer Determination Request  
Required**  
Paramount Parkway Fire Station  
(Approx. 4.14 acres)  
Morrisville, Wake County, North Carolina

Dear Eric Pearson,

Please find the enclosed Buffer Review Information Package for the Paramount Parkway Fire Station site (the Site). A formal buffer determination request is not required for submittal to the North Carolina Division of Water Resources (DWR), as the presence or absence of a state-regulated riparian buffer is not being contested based on the most recent US Geological Survey (USGS) and/or county soil survey maps.

The Site is located within the Piedmont Physiographic Region and encompasses approximately 4.14 acres in Morrisville, North Carolina within Wake County (Figure 1: Vicinity Map). The Site consists of forested area and a maintained landscaped area along Paramount Parkway. The Site is composed of a portion of Wake County Parcel Identification Number (PIN) 0746961763 (Figure 4: Parcel Map). The Site is bounded by Paramount Parkway and commercial office buildings to the north and east, a commercial office building to the south, and forested area to the west.

The Site is located within the Upper Crabtree Creek subwatershed (Hydrologic Unit Code [HUC] HUC 030202010801) in the Neuse River Basin. The Site drains to the east via surface flow and unnamed tributaries to Stirrup Iron Creek, which has a NC Division of Water Resources (DWR) Stream Index Number of 27-33-4-2 and a Stream Classification of C. The Site is located within Zone X, an area of minimal flood hazard, according to Federal Emergency Management Agency (FEMA) Flood Insurance Rate Map (FIRM) Panel 3720074600K and 3720075600K (effective 07/19/2022).

A delineation of the Site was conducted by Timmons Group Environmental Scientists Alyssa Grecky and Tallis Donnelly on March 26, 2026 to identify potential features subject to riparian buffer rules. No potential wetland waters were identified on site based upon the methodology outlined in the 1987 U.S. Army Corps of Engineers (USACE) Wetland Delineation Manual and the Regional Supplement to the Corps of Engineers Wetland Delineation Manual: Eastern Mountains and Piedmont (Version 2.0). Based upon the methodology outlined in the DWR Methodology for Identification of Intermittent and Perennial Streams and Their Origins (Version 4.11), no potential non-wetland waters, including streams, were identified within the Site.

The most recent USGS topographic map (Cary, NC 2022) does not indicate any features on Site that would be subject to riparian buffer rules. (Figure 1: Vicinity Map). The Wake County Soil Survey map (1970) does not indicate any features on Site that would be subject to riparian buffer

rules (Figure 5: NRCS Soil Survey Map). It does show one stream line adjacent to the site to the west that would be subject to riparian buffer rules. However, the off site mapped stream starts more than 50 feet from the Site boundary, therefore no riparian buffer is present on Site.

The delineation mapping is included in Figure 7: Wetlands and Waters Delineation Map, which shows no potential jurisdictional features with the Site boundaries.

Please review the attachments and contact Alyssa Grecky at (919) 532-3247 or [alyssa.grecky@timmons.com](mailto:alyssa.grecky@timmons.com) if additional information is required.

Sincerely,  
**Timmons Group**

A handwritten signature in cursive script, appearing to read "A Grecky".

Alyssa Grecky, WPIT  
Environmental Scientist I

# APPENDICES

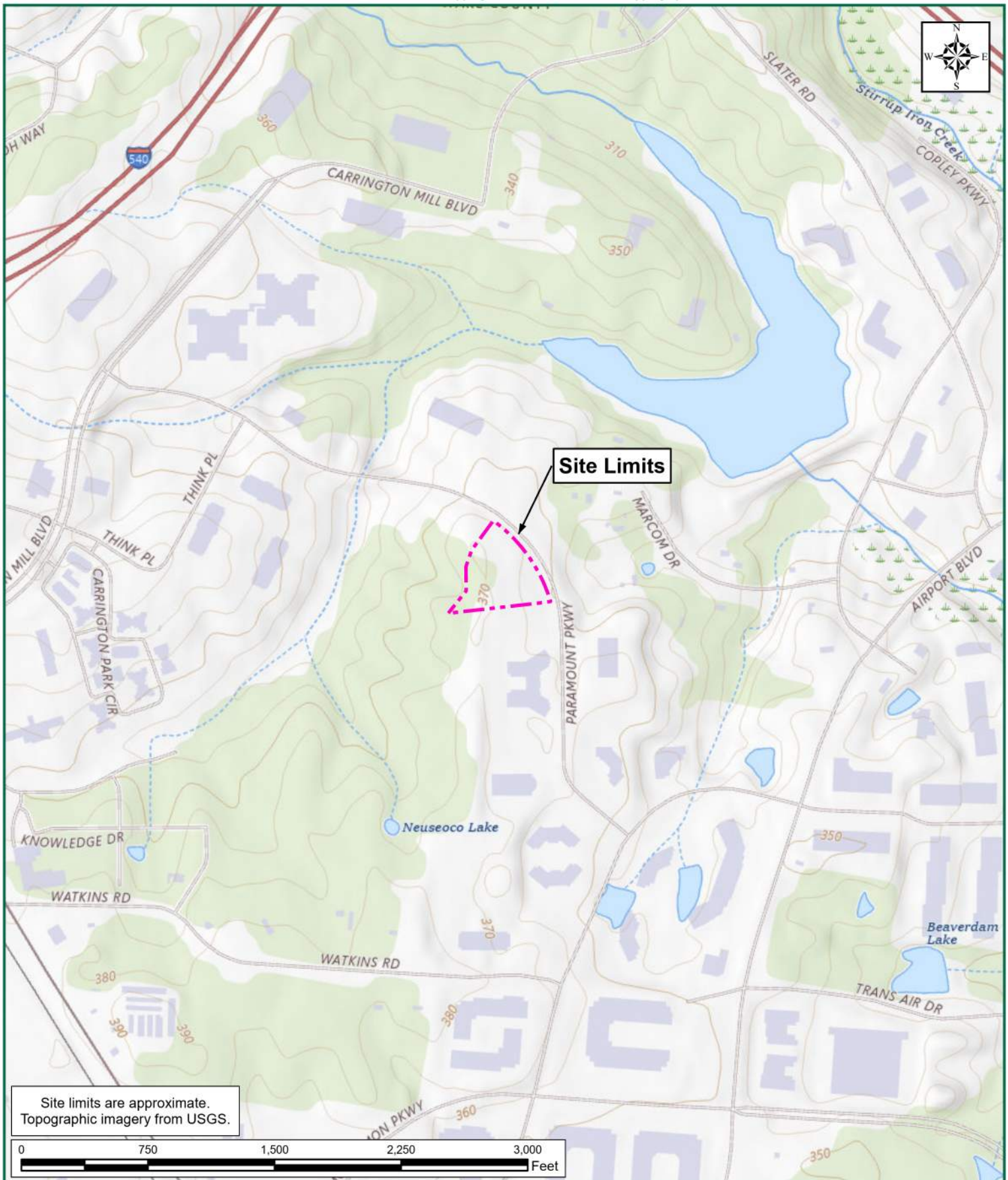
## **APPENDIX A**

- Figure 1 Vicinity Map
- Figure 2 Hydrologic Unit Code Map
- Figure 3 Environmental Inventory Map
- Figure 4 Parcel Map
- Figure 5 NRCS Soil Survey Map
- Figure 6 LiDAR Map
- Figure 7 Wetlands and Waters Delineation Map

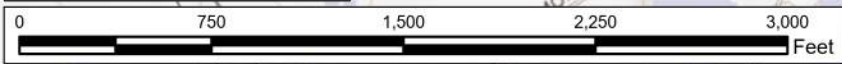
## **APPENDIX B**

- Photographic Log

## **APPENDIX A**



Site limits are approximate.  
Topographic imagery from USGS.



**Paramount Parkway Fire Station**  
WAKE COUNTY, NORTH CAROLINA  
**FIGURE 1: VICINITY MAP**

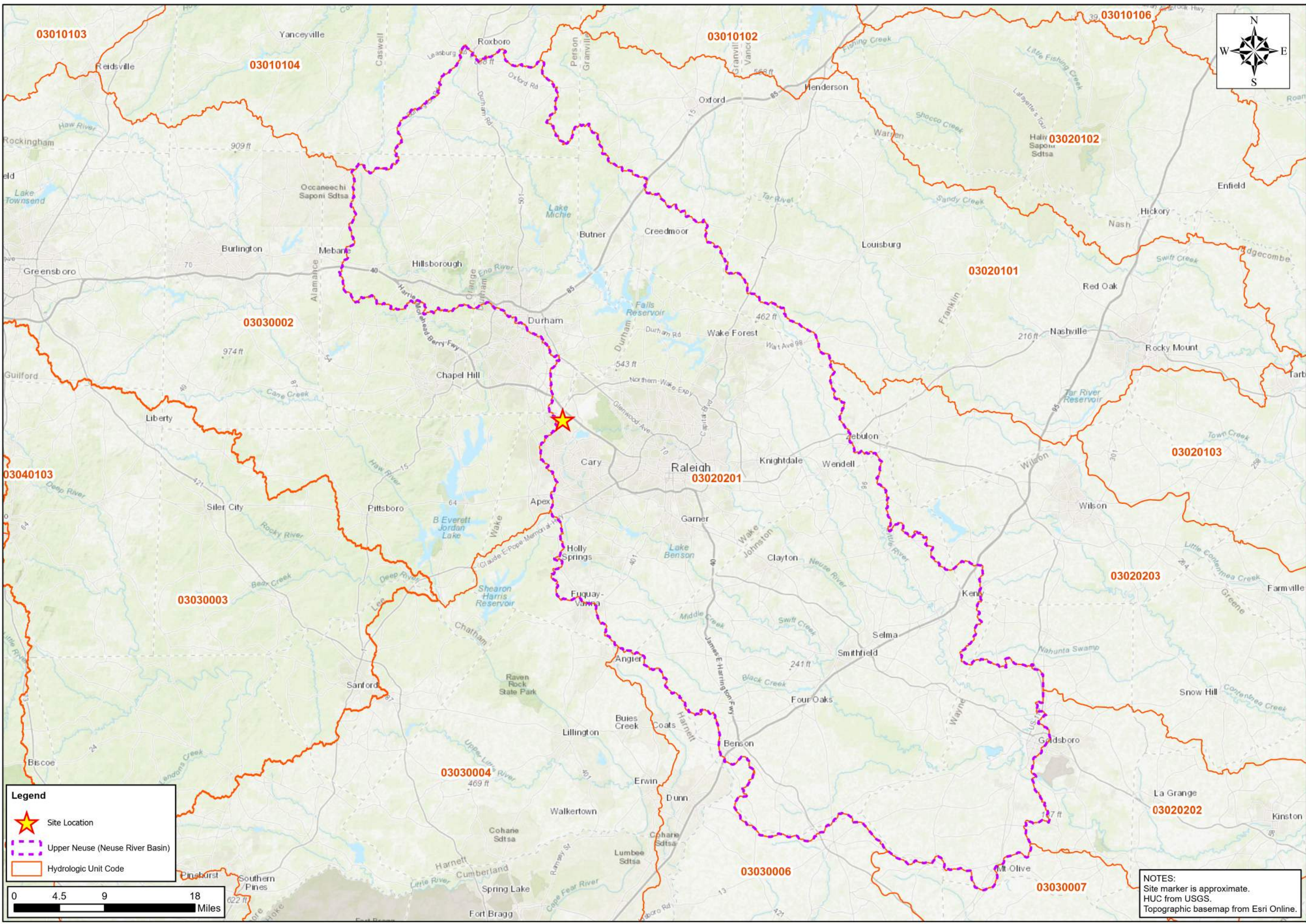
**TIMMONS GROUP**  
YOUR VISION ACHIEVED THROUGH OURS.

TIMMONS GROUP JOB NUMBER: 69593.003  
PROJECT STUDY LIMITS: 4.14 ACRES  
LATITUDE: 35.8575624°N  
LONGITUDE: -78.8313547°W

U.S.G.S. QUADRANGLE(S): CARY, NC  
DATE(S): 2022  
WATERSHED(S): UPPER NEUSE (NEUSE RIVER BASIN)  
HYDROLOGIC UNIT CODE(S): 03020201

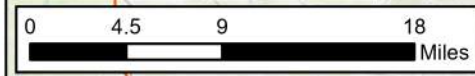
These plans and associated documents are the exclusive property of TIMMONS GROUP and may not be reproduced in whole or in part and shall not be used for any purpose whatsoever, inclusive, but not limited to construction, bidding, and/or construction staking without the express written consent of TIMMONS GROUP.

Path: Y:\805\69593.003 - Morrisville Fire Station 22\GIS\MorrisvilleFireStation22Mapping\MorrisvilleFireStation22Mapping.aprx



**Legend**

- Site Location
- Upper Neuse (Neuse River Basin)
- Hydrologic Unit Code



NOTES:  
 Site marker is approximate.  
 HUC from USGS.  
 Topographic basemap from Esri Online.

TIMMONS GROUP

Paramount Parkway Fire Station

WAKE COUNTY, NORTH CAROLINA

FIGURE 2: HYDROLOGIC UNIT CODE MAP

DATE	REVISION DESCRIPTION
03/31/2026	YOUR VISION ACHIEVED THROUGH OURS

JOB NUMBER
69593.003

SHEET NO.
1 OF 1

DATE	DRAWN BY	DESIGNED BY	CHECKED BY	SCALE
03/31/2026	E. MITCHELL	E. MITCHELL	A. GRECKY	1" = 9 Miles

THIS DRAWING PREPARED AT THE
CORPORATE OFFICE
7053 Celebration Park Ave, Suite 300, Richmond, VA 23226
TEL 804.200.6600 FAX 804.960.1668 www.timmons.com

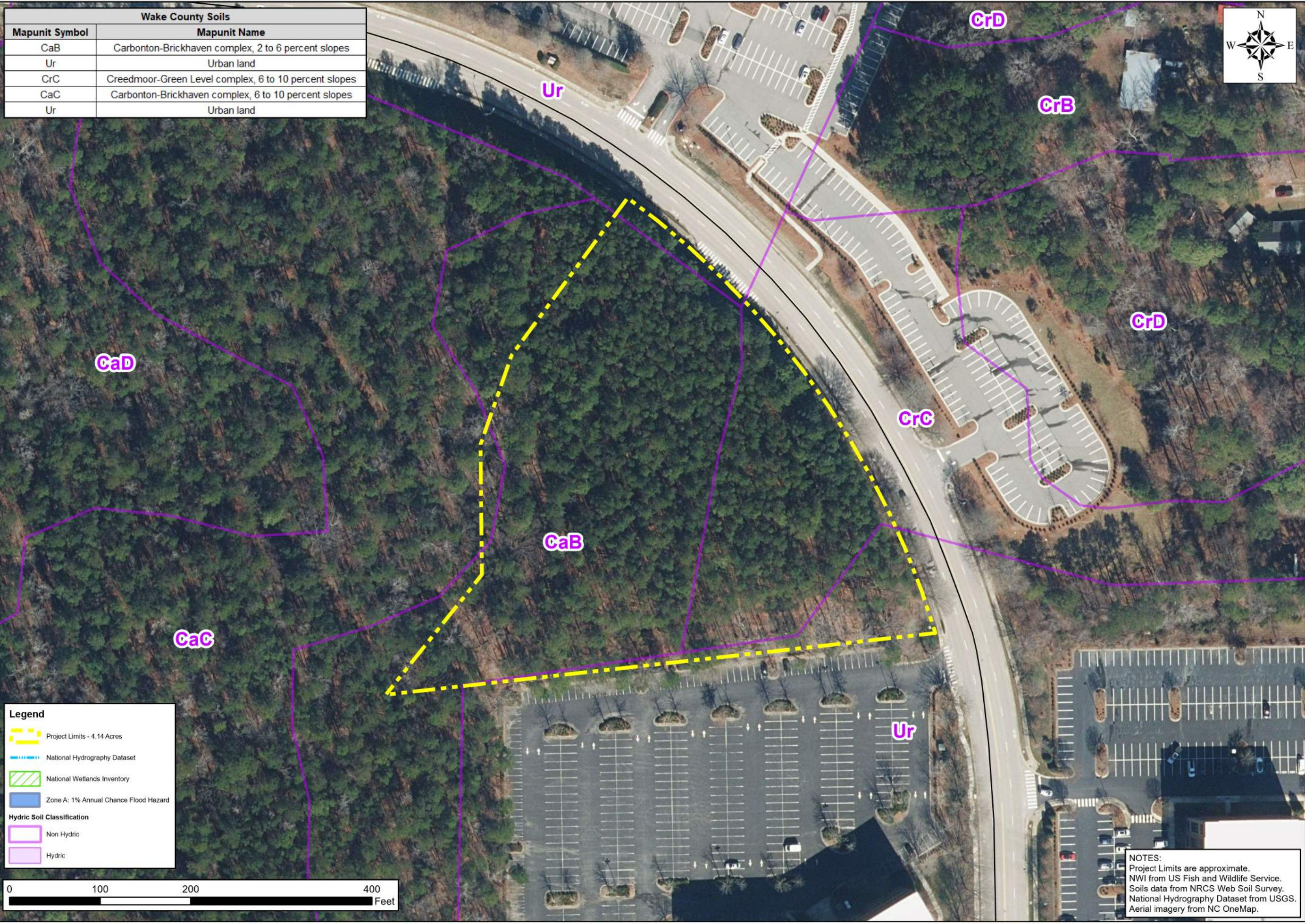
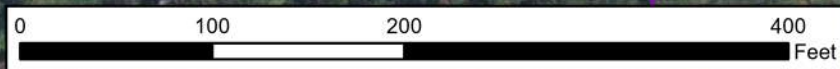
Site Development	Residential	Infrastructure	Technology	Environmental

These plans and associated documents are the exclusive property of TIMMONS GROUP and may not be reproduced in whole or in part and shall not be used for any purpose whatsoever, inclusive, but not limited to construction, bidding, and/or construction staking without the express written consent of TIMMONS GROUP.

Path: Y:\805\69593.003 - Morrisville Fire Station 22\GIS\MorrisvilleFireStation22\Mapping\MorrisvilleFireStation22\Mapping.aprx

Wake County Soils	
Mapunit Symbol	Mapunit Name
CaB	Carbonton-Brickhaven complex, 2 to 6 percent slopes
Ur	Urban land
CrC	Creedmoor-Green Level complex, 6 to 10 percent slopes
CaC	Carbonton-Brickhaven complex, 6 to 10 percent slopes
Ur	Urban land

Legend	
	Project Limits - 4.14 Acres
	National Hydrography Dataset
	National Wetlands Inventory
	Zone A: 1% Annual Chance Flood Hazard
Hydric Soil Classification	
	Non Hydric
	Hydric



**NOTES:**  
 Project Limits are approximate.  
 NWI from US Fish and Wildlife Service.  
 Soils data from NRCS Web Soil Survey.  
 National Hydrography Dataset from USGS.  
 Aerial imagery from NC OneMap.

**Paramount Parkway Fire Station**  
WAKE COUNTY, NORTH CAROLINA

**FIGURE 3: ENVIRONMENTAL INVENTORY MAP**

JOB NUMBER		69593.003
SHEET NO.		1 OF 1

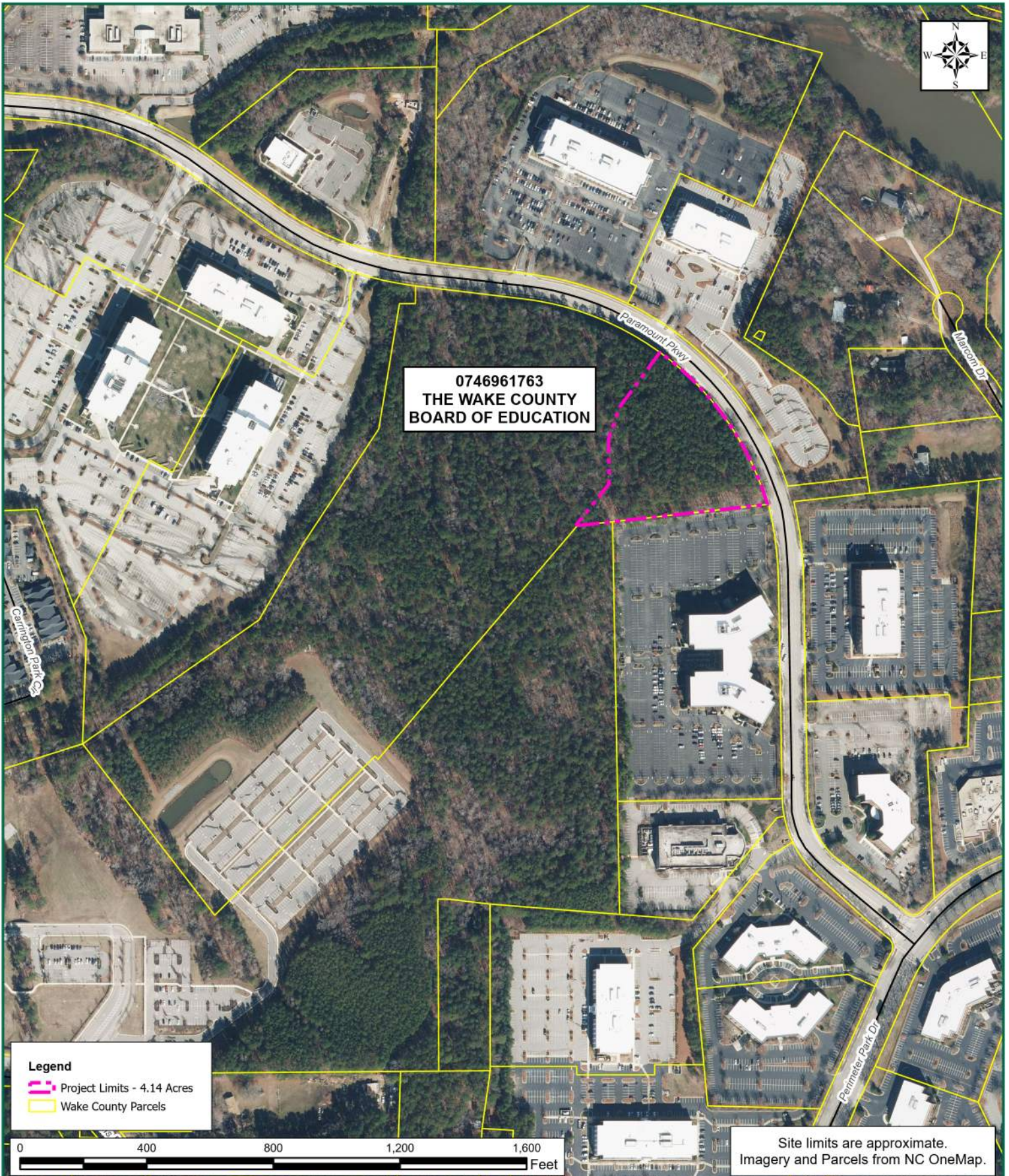
THIS DRAWING PREPARED AT THE  
CORPORATE OFFICE  
7053 Celebration Park Ave, Suite 300, Richmond, VA 23226  
TEL 804.202.6600 FAX 804.660.1648 www.timmons.com

YOUR VISION ACHIEVED THROUGH OURS

Site Development | Residential | Infrastructure | Technology | Environmental

REVISION DESCRIPTION	
DATE	
03/31/2026	
DRAWN BY	E. MITCHELL
DESIGNED BY	E. MITCHELL
CHECKED BY	A. GRECKY
SCALE	1" = 100'

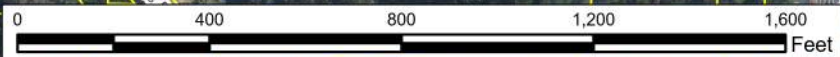
These plans and associated documents are the exclusive property of TIMMONS GROUP and may not be reproduced in whole or in part and shall not be used for any purpose whatsoever, inclusive, but not limited to construction, bidding, and/or construction staking without the express written consent of TIMMONS GROUP.



**0746961763**  
**THE WAKE COUNTY**  
**BOARD OF EDUCATION**

**Legend**

- Project Limits - 4.14 Acres
- Wake County Parcels



Site limits are approximate.  
 Imagery and Parcels from NC OneMap.

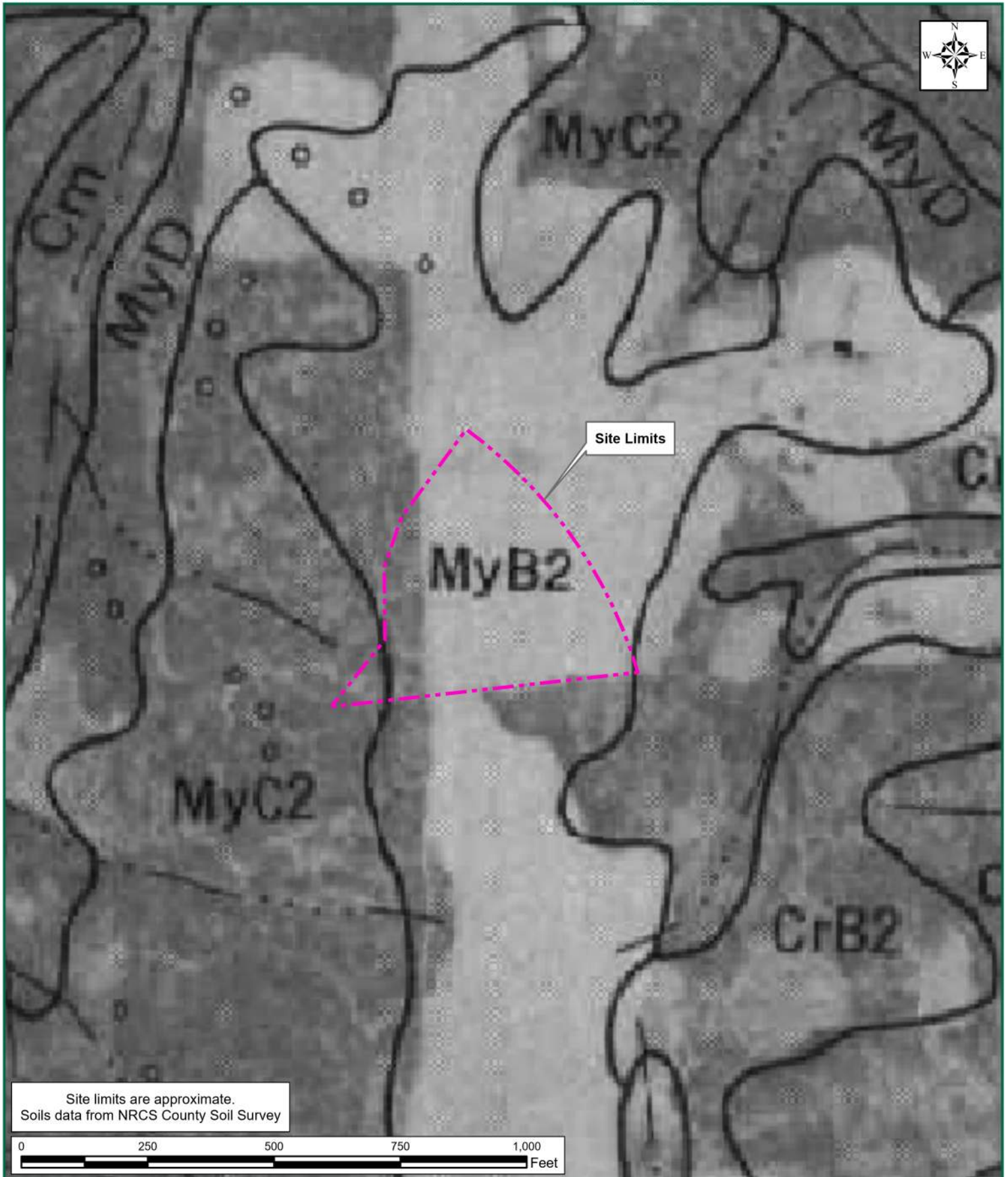
**Paramount Parkway Fire Station**  
 WAKE COUNTY, NORTH CAROLINA  
**FIGURE 4: PARCEL MAP**

**TIMMONS GROUP**  
 YOUR VISION ACHIEVED THROUGH OURS.

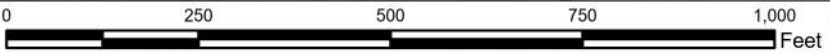
TIMMONS GROUP JOB NUMBER: 69593.003  
 PROJECT STUDY LIMITS: 4.14 ACRES  
 LATITUDE: 35.8575624°N  
 LONGITUDE: -78.8313547°W

U.S.G.S. QUADRANGLE(S): CARY, NC  
 DATE(S): 2022  
 WATERSHED(S): UPPER NEUSE (NEUSE RIVER BASIN)  
 HYDROLOGIC UNIT CODE(S): 03020201

These plans and associated documents are the exclusive property of TIMMONS GROUP and may not be reproduced in whole or in part and shall not be used for any purpose whatsoever, inclusive, but not limited to construction, bidding, and/or construction staking without the express written consent of TIMMONS GROUP.



Site limits are approximate.  
Soils data from NRCS County Soil Survey



**Paramount Parkway Fire Station**  
WAKE COUNTY, NORTH CAROLINA  
**FIGURE 5: NRCS SOIL SURVEY MAP**

**TIMMONS GROUP**  
YOUR VISION ACHIEVED THROUGH OURS.

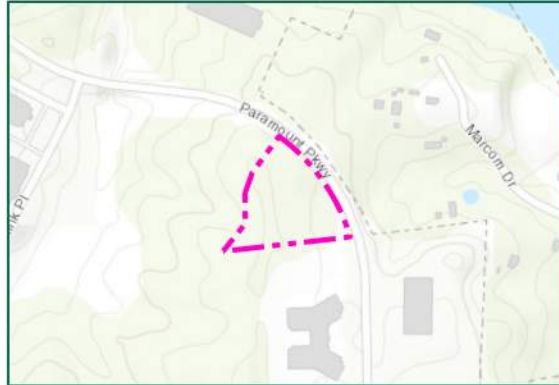


TIMMONS GROUP JOB NUMBER: 69593.003  
PROJECT STUDY LIMITS: 4.14 ACRES  
LATITUDE: 35.8575624°N  
LONGITUDE: -78.8313547°W

SOURCE NRCS COUNTY SOIL SURVEY  
SOIL SURVEY DATE: WAKE COUNTY, NC 1970  
WATERSHED(S): UPPER NEUSE (NEUSE RIVER BASIN)  
HYDROLOGIC UNIT CODE(S): 03020201

These plans and associated documents are the exclusive property of TIMMONS GROUP and may not be reproduced in whole or in part and shall not be used for any purpose whatsoever, inclusive, but not limited to construction, bidding, and/or construction staking without the express written consent of TIMMONS GROUP.



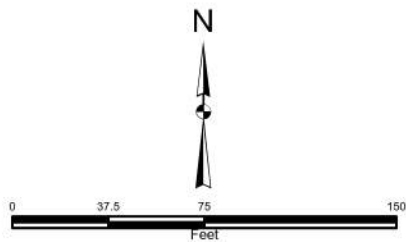


No onsite features.

**Legend**

- Project Study Limits - 4.14 acres
- Field Data Station
- Culvert

1. Waters of the U.S. have not been confirmed by the U.S. Army Corps of Engineers until stamped.
2. Project limits are approximate.



Path: Y:\06069593.003 - Monteville Fire Station 22\GIS\MontevilleFireStation22\Maping\MontevilleFireStation22\Maping.aprx / NC - FIGURE 7 - WTD.MXD

**TIMMONS GROUP**

Paramount Parkway Fire Station  
WAKE COUNTY, NORTH CAROLINA

FIGURE 7: WETLANDS AND WATERS DELINEATION MAP

JOB NUMBER  
69593.003

SHEET NO.  
1 of 1

THIS DRAWING PREPARED AT THE  
CORPORATE OFFICE  
7053 Celebration Park Ave, Suite 300, Richmond, VA 23225  
TEL 804.200.6500 FAX 804.660.7668 www.timmons.com

YOUR VISION ACHIEVED THROUGH OURS

Site Development	Residential	Infrastructure	Technology	Environmental
DATE	DATE	DATE	DATE	DATE

DRAWN BY  
**N. STICKEL**

DESIGNED BY  
**N. STICKEL**

CHECKED BY  
**A. GRECKY**

SCALE  
**1" = 75'**

These plans and associated documents are the exclusive property of TIMMONS GROUP and may not be reproduced in whole or in part and shall not be used for any purpose whatsoever, inclusive, but not limited to construction, bidding, and/or construction staking without the express written consent of TIMMONS GROUP.

## **APPENDIX B**

# Paramount Parkway Fire Station



West-facing view along the western boundary of the Site, upslope of the offsite NRCS mapped stream.



West-facing view approximately 90 feet west of the Site boundary, upslope of the offsite NRCS mapped stream.