



The LSV Partnership-PA
Architects/Planners-AIA

P.O. Box 63715, 209 Fairway Drive
Fayetteville, NC 28305
910/485-4108 Fax: 910/485-8388



CONSULTANTS

- STRUCTURAL ENGINEER
Flaming and Associates
1314 Rosford Road
Fayetteville, NC 28305-5026
910/433-2625 FAX 910/433-2604
- MECHANICAL AND ELECTRICAL ENGINEERS
Newcomb & Boyd
One Northside 75
Atlanta, Ga 30318-7761
404/352-3930 FAX 404/352-1826
- LANDSCAPE ARCHITECT
McBride Hess Design Group, PA
817-B Brooklyn Street
Raleigh, NC 27605-1420
919/821-3340 FAX 919/821-3314

1 HR. WALL CONSTRUCTION

2 HR WALL CONSTRUCTION

Newcomb & Boyd
Consulting Engineering Group
One Northside 75
Atlanta, Georgia 30318-7761
404-352-3930 T
404-352-1826 F

SHEET TITLE: LIGHTING FIXTURE
SCHEDULE
SCALE: NO SCALE
DATE: OCTOBER 24, 1997
PROJECT NO: 96N261
DRAWN BY: LZR
CHECKED BY: TRB
DESIGNED BY: TRB



DEPARTMENT OF
SOCIAL SERVICES
FAYETTEVILLE, NC

SHEET

E0.03

OF

LIGHTING FIXTURE AND LAMP SCHEDULE							
TYPE	MANUFACTURER	DESCRIPTION	CATALOG NUMBER	VOLTS	LAMP DESIGNATION	MTG.	REMARKS
A	LITECONTROL LINEAR FOCAL POINT	16' PERF. INDIRECT	2/ P-1-536818-CWM-LP/ELB-FA/ACC-277-F C312-B-3-ETB-277 PRD-C24-BW-FU-16' FAL313-13TB-E-277-C024-NS-FU-HW-16'	277	12 - F32TB/SP35	P	16' TOTAL LENGTH, PROVIDE FIELD ADJUSTABLE AIRCRAFT CABLE AND 2" DIAMETER CANOPY. PROVIDE ONE 3- LAMP BALLAST PER 4 FT. SECTION.
A1	LITECONTROL LINEAR FOCAL POINT	12' PERF. INDIRECT	3/ P-1-533418-CWM-LP/ELB-FA/ACC-277-F C312-B-3-ETB-277 PRD-C24-BW-FU-12' FAL313-13TB-E-277-C024-NS-FU-HW-12'	277	9 - F32TB/SP35	P	12' TOTAL LENGTH, PROVIDE FIELD ADJUSTABLE AIRCRAFT CABLE AND 2" DIAMETER CANOPY. PROVIDE ONE 3- LAMP BALLAST PER 4 FT. SECTION.
A2	LITECONTROL LINEAR FOCAL POINT	8' PERF. INDIRECT	P-1-536818-CWM-LP/ELB-FA/ACC-277-F C312-B-3-ETB-277 PRD-C24-BW-FU-8' FAL313-13TB-E-277-C024-NS-FU-HW-8'	277	6 - F32TB/SP35	P	PROVIDE FIELD ADJUSTABLE AIRCRAFT CABLE AND 2" DIAMETER CANOPY. PROVIDE ONE 3-LAMP BALLAST PER 4 FT. SECTION.
A3	LITECONTROL LINEAR FOCAL POINT	4' PERF. INDIRECT	P-1-533418-CWM-LP/ELB-FA/ACC-277-F C312-B-3-ETB-277 PRD-C24-BW-FU-4' FAL313-13TB-E-277-C024-NS-FU-HW-4'	277	3 - F32TB/SP35	P	PROVIDE FIELD ADJUSTABLE AIRCRAFT CABLE AND 2" DIAMETER CANOPY. PROVIDE ONE 3-LAMP BALLAST PER 4 FT. SECTION.
B	LEGION METALUX LIGHTOLIER	2X4 PARABOLIC (3.5')	572-340-PB18-ESB/EBO 2P30X-332-S36H-277V-EBB1 DPS20-18P-P340-277-03	277	3 - F32TB/SP35	R	
C	STAFF HALO LIGHTOLIER	CFL CAN	SS07204-S2-7202H-MC-F C7226-7250H-2E 8056CLP-SE-7226H-F277	277	2-F2608X/SPX35/4P	R	
D	LEGION FOCAL POINT LIGHTOLIER	2X2 R. INDIRECT	5922-28X40-ESB/EBX FBX 22 B 2 BX40E277G PS WH QV52GPF052U4-277-SB	277	2-F40/308X/SPX35	R	
E	LEGION FOCAL POINT LIGHTOLIER	2X4 R. INDIRECT	5924-48X40-ESB/EBX FBX 24 B48X40E 277 G PS QV54GPF052U4-277-SB	277	4-F40/308X/SPX35	R	
F	ZUMTABEL LIGHTOLIER ADJENIT	INCAND. W/GLASS	CLUGPAR38150H120VACCSARCFUSATOSL 87780CL-8600-DD-9" DIAMETER H7840T-4600C-905BG	120	100PAR/HR/NFL25	R	PROVIDE 9" DIAM. OUTSIDE SAND- BLASTED BOROSILICATE GLASS. INSIDE HOLE DIAMETER IS 4".
G	ILLUMIN. EXPR. SEAGULL LIGHTOLIER	SCONCE IN SINGLE RESTROOMS	RIGADN-859-PL 5902-15 QUADRO-40600-E2	277	2-F130BX2314/SPX35	W	
H	STAFF LIGHTOLIER HALO	CFL WALLWASH	SS07204-S2-7202H-MC-F 8086CLP-7226H-F277 C7226-2E-7210	277	2-F2608X/SPX35/4P	R	
J	LEGION METALUX LIGHTOLIER	2 LAMP STAGGERED	2420-240-DL-ESB/EBO SL 232 277V-EBB1 STC-240RS-HPF-277-SO	277	2 - F32TB/SP35	S	
J1	LEGION CJ LIGHTING LIGHTOLIER	1 LAMP STRIP	300-18X40-ESB/EBX BX 19-40-EBX SW140RS-HPF-277-SO	277	F40/308X/SPX35	S	
K	LITECONTROL METALUX LIGHTOLIER	4" WALL LIGHTER	G-D-1024BX-CWM-ELB-F-277 RWW T2 BX40 277 EBB1 WLRN244-277BX-SB	277	2-F40/308X/SPX35	R	
K1	LITECONTROL METALUX LIGHTOLIER	WALL LITE W/FLANGE	R-D-1024BX-CWM-ELB-F-277 RWW T2 BX40 277 EBB1 (FLANGED) WL4DF/WLRN244-277BX-SB	277	2-F40/308X/SPX35	R	PROVIDE FLANGE FOR HARD CEILING INSTALLATION.
L	LEGION METALUX LIGHTOLIER	2X4 PRISMATIC	502-240-ESB/EBO-K19A 20C-232-A125-277-EB18 SPS2FS-YB-240-277-SO	277	2 - F32TB/SP35	R	
L1	LEGION METALUX LIGHTOLIER	2X4 PRISMATIC	502-340-ESB/EBO-K19A 20C-332-A125-277-EB18 SPS2FS-YB-340-277-SO	277	3 - F32TB/SP35	R	
L2	LEGION METALUX LIGHTOLIER	2X4 PRISM. W/FLANGE	502-240-ESB/EBO-K19A-F 27C-232 A125 277V EBB1 SPS2FS-YB-240-277-SO	277	2 - F32TB/SP35	R	PROVIDE FLANGE FOR HARD CEILING APPLICATION.
M	LEGION METALUX LIGHTOLIER	WALL BRACKET	WH1265-240-ACW-ESB/EBO BIU-232-277V-EBB1 MB8240RS-HPF-50	277	2 - F32TB/SP35	S	
N	LEGION METALUX LIGHTOLIER	STRIP W/WIRE GUARD	2410-240-WG-ESB/EBO SS 232-277V-EBB1-WG/SS-4' SW240RS-HPF-277-SO-AWG3	277	2 - F32TB/SP35	S	PROVIDE CHAIN MOUNTING IN OPEN CEILING AREAS.
N1	LEGION METALUX	3-LAMP STRIP	2525-340-ESB/EBO STN 332-277V-EBB1	277	3 - F32TB/SP35	S	MOUNT TO UNDERSIDE OF BEAM.
Q	STAFF HALO LIGHTOLIER	1 X 1 LENSED HD	R574-F-DL MS324T-740-11300P SD12D FT-SD12D-10HV	277	MXR100/C/U/MED	R	
R	STAFF HALO LIGHTOLIER	PAR HD DOWNLIGHT	S406342-S2-8320T-MC-F M06X-740-6600 DL6CL-DLEC 10HA	277	MXR100/U/PAR/SP	R	
S	INSIGHT ELLIPTIPAR SPI	EXTERIOR INDIRECT	W1920/W/W/P M454-0100-W-02-B-00 W/AV00200 EXR-2403-277-WH-CS-WL	277	MXR100/C/U/MED	SW	MOUNT APPROX. 12"-0" AFG TO CENTERLINE OF JUNCTION BOX. WHITE FINISH WITH PERFORATED VISOR. REWOTE BALLAST.

LIGHTING FIXTURE AND LAMP SCHEDULE							
TYPE	MANUFACTURER	DESCRIPTION	CATALOG NUMBER	VOLTS	LAMP DESIGNATION	MTG.	REMARKS
T	TRANSILITE SIRIUS	CURVABLE TRACK	GT505WH-GT306WH12(4)-GT702WH-PS2R	NA	NA	P	SEE DRAWING FOR SHAPE DESIGN. PROVIDE ALL COMPONENTS FOR COMPLETE INSTALLATION.
T1	TRANSILITE SIRIUS	TRACK FIXTURE	GLT-241-24-CB	120	Q3513/CL	AI	MOUNT TO TRACK TYPE "T"
U	ARCH. LAND. LTD. ALUMALITE	HD IN STARWELL	SP-10/100MH/277/E17/+ CW-70W/MH-277V--	277	MXR100/C/U/MED	RW	* ARCHITECT TO DETERMINE FINISH.
V	SPERO EXCELUNE	JANITOR'S LIGHT	42L-PR-26W RLP26HFLGC-4-GRY-EL	277	F2608X/SPX35/4P	S	
W	KURT VERSEN ALUMALITE	CFL CYLINDER @ STAR	PE77-EB-WALL BRACKET YRW-260-277V	277	F2608X/SPX35/4P	W	
X	ATLITE SURELITES	LED EXIT SIGN	PAL-R-+ CAX LED	277	LED INCLUDED	AI	SEE DRAWINGS FOR MOUNTING AND * NUMBER OF FACES.
Y	ALIKO FALSFAE	UNDERCABINET	LINCS-150-WE-0485/ECB/OF MT-T-32-277V-CEX-EBB1	277	F32TB/SP35	AI	MOUNT TO UNDERSIDE OF CABINET.

LIGHTING FIXTURE AND LAMP SCHEDULE							
TYPE	MANUFACTURER	DESCRIPTION	CATALOG NUMBER	VOLTS	LAMP DESIGNATION	MTG.	REMARKS
SLA	McGRAW ED. QUALITY LSI LIGHTING SYS.	VERT. SHOEBOX	GLA-4012-5-30-F-SY-MA1007 125-23-3-MH400-480-SL-FDD GBM-3-400MH-CT-480-PLT-FD1	480	MWR400/C/VBU	AM	PROVIDE MATCHING POLE AND REQUIRED BRACKET BY SAME MFG. AS INDICATED ON DWG. E1.25.
SLB	McGRAW ED. QUALITY LSI LIGHTING SYS.	VERT. SHOEBOX ON 27" ROUND TAPERED STEEL POLE.	GLC-4012-5-AR-F-SY POLE: RTS8A27SS3XX 126-23-VS-MH400-480-SL-FDD POLE: RTS-27-7.5-11-SL-T2 GBPM-5-400MH-CT-480-PLT-FD1 POLE: R1PP-S110-27-PLT-RTBC	480	MWR400/C/VBU	PT	PROVIDE MATCHING POLE AND REQUIRED BRACKET BY SAME MFG. AS INDICATED ON DWG. E1.25.
SLC	McGRAW ED. QUALITY LSI LIGHTING SYS.	VERT. SHOEBOX	GLA-4012-5-2D-F-SY-MA1007 125-23-3-MH400-480-SL-FDD-HSS GBM-2-400MH-CT-480-PLT-FD1	480	MWR400/C/VBU	AM	PROVIDE MATCHING POLE AND REQUIRED BRACKET BY SAME MFG. AS INDICATED ON DWG. E1.25.
SLD	SELUX LUMINS	DECO PEDEST. FIXT. ON 10' POLE	SAZWP-1-1100-277-SV/A35-10-SV W712-277-5	277	MXR100/C/U/MED	CB	PROVIDE MATCHING POLE AND REQUIRED BRACKET BY SAME MFG. AS INDICATED ON DWG. E1.25.
SLE	U.S. ARCH. ARCH. AREA LITG.	CONC. BOLLARD	BDC18/CL/100MH/277WHT/WAT/SF/36' CB18R36-CUTOFF-DONE100 MH-277-MSB- WHT-EXT-CONCRETE TO MATCH	277	MXR100/C/U/MED	CB	
P27	McGRAW ED. QUALITY LSI LIGHTING SYS.	27" ROUND TAPERED STEEL POLE	RTS8A27SS3+ RTS-27-7.5-11-SL-T4 R1PN-S110-27-N-PLT-RTBC	N/A	N/A	CB	PROVIDE BRACKETS AS REQUIRED.
P30	McGRAW ED. QUALITY LSI LIGHTING SYS.	30" ROUND TAPERED STEEL POLE	RTS8A30SS3+ RTS-30-7.5-11-SL-T4 R1PN-S110-30-N-PLT-RTBC	N/A	N/A	CB	PROVIDE BRACKETS AS REQUIRED.

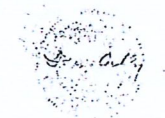
- NOTES: (THIS SHEET ONLY)
- LAMPS ARE SPECIFIED BY MFG'S LAMP ORDERING CODE, NOT ANSI NUMBER.
 - ALL LAMPS ARE GENERAL ELECTRIC UNLESS OTHERWISE NOTED.
 - SINGLE NUMERICAL PREFIX IN LAMP COLUMN INDICATES NUMBER OF LAMPS IN FIXTURE (e.g., 3-F32TB).
 - NO PREFIX INDICATES SINGLE LAMP (e.g., 150W A19).
 - USE THE FOLLOWING MOUNTING ABBREVIATIONS:
R = RECESSED
S = SURFACE
W = WALL
P = PENDANT
AI = AS INDICATED
C = CEILING
CB = CONCRETE BASE
AM = ARM MOUNTED ON POLE
PT = POST TOP MOUNTED ON POLE

DATE: 10/24/97 BY: LZR CHECKED BY: TRB DESIGNED BY: TRB



The LSV Partnership-PA
Architects/Planners-AIA

P.O. Box 63713, 209 Fairway Drive
Fayetteville, NC 28305
910/485-4100 Fax 910/485-8389



CONSULTANTS

- STRUCTURAL ENGINEER
Fleming and Associates
1314 Roanoke Road
Fayetteville, NC 28305-5026
910/433-2825 FAX 910/433-2604
- MECHANICAL AND ELECTRICAL ENGINEERS
Newcomb & Boyd
One Northside 75
Atlanta, Ga. 30318-7761
404/352-3930 FAX 404/352-1826
- LANDSCAPE ARCHITECT
McBride Hess Design Group, PA
817-B Brooklyn Street
Raleigh, NC 27605-1420
919/821-3340 FAX 919/821-3314

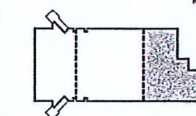
1 HR. WALL CONSTRUCTION

2 HR. WALL CONSTRUCTION

Newcomb & Boyd

Consulting Engineering Group
One Northside 75
Atlanta, Georgia 30318-7761
404-352-3930 T
404-352-1826 F

SHEET TITLE:
**LIGHTING PLAN -
GROUND FLOOR EAST**
SCALE: 1/8" = 1'-0"
DATE: OCTOBER 24, 1997
PROJECT NO: 96N261
DRAWN BY: TSD
CHECKED BY: TJT
DESIGNED BY: TSD



KEY PLAN



DEPARTMENT OF
SOCIAL SERVICES
FAYETTEVILLE, NC

SHEET

E1.02

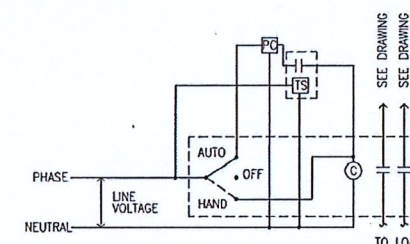
OF

GENERAL NOTES:

1. ALL 2' X 4' FIXTURES ARE TYPE "L" UNLESS OTHERWISE NOTED. ALL 2' X 2' FIXTURES ARE TYPE "D" UNLESS OTHERWISE NOTED. ALL RECESSED DOWNLIGHTS ARE TYPE "C" UNLESS OTHERWISE NOTED.

KEY NOTES:

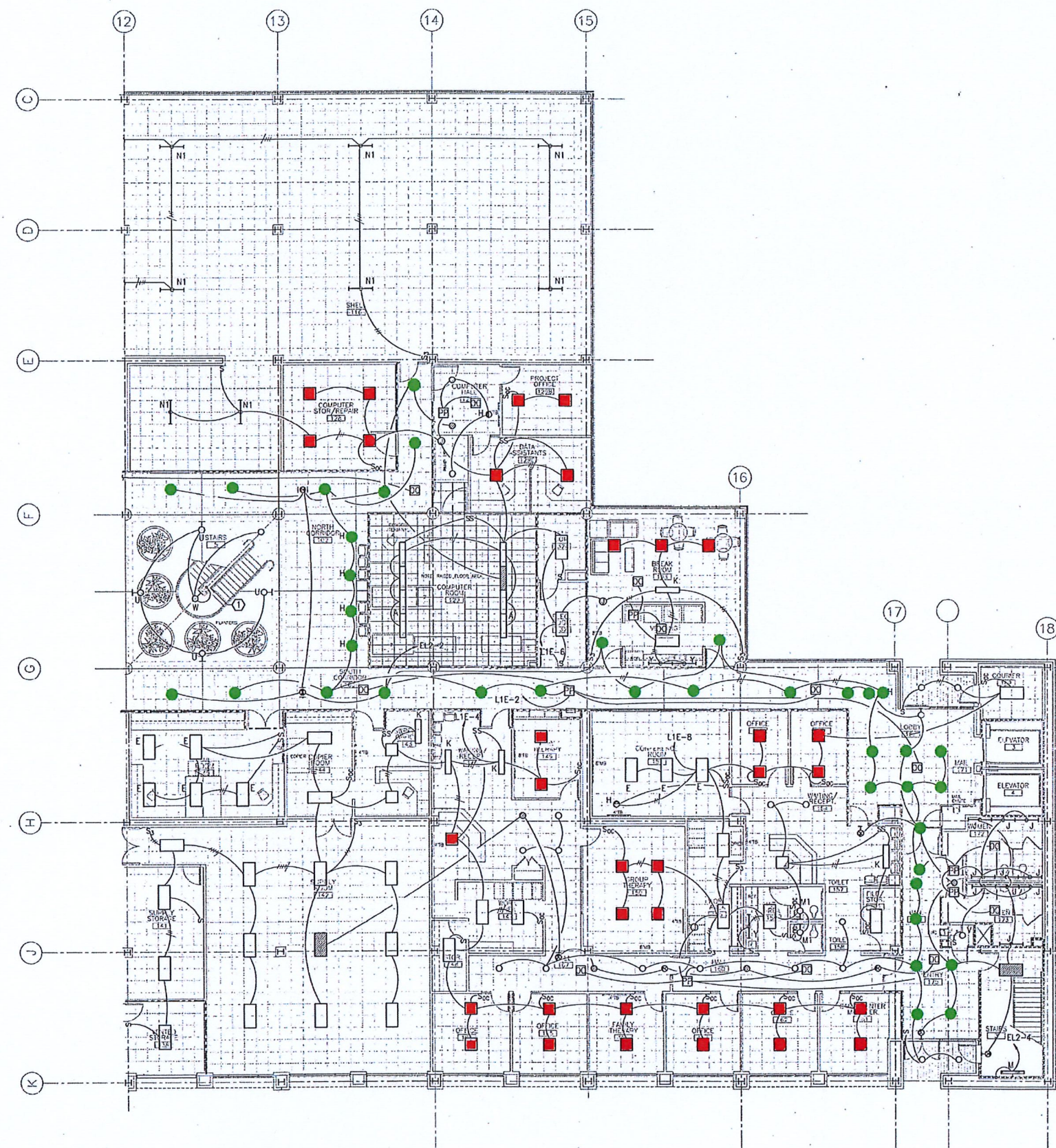
1. CONCEAL CONDUIT RISER IN STAIR STRINGER. TYPICAL UP & DOWN USE #10 AWG. THRU-OUT CIRCUIT.



PHOTOCCELL LIGHTING CONTROL SCHEMATIC
NO SCALE

NOTES:
1. SEE SPECIFICATIONS FOR CONTACTOR TYPE.

GROUND FLOOR RIGHT



GROUND FLOOR
1/8" = 1'-0"

DATE: 10/24/97
DRAWN BY: TSD
CHECKED BY: TJT
DESIGNED BY: TSD



The LSV Partnership-PA
Architects/Planners/AIA

P.O. Box 63713, 209 Falway Drive
Fayetteville, NC 28305
(910) 485-4108 Fax (910) 485-8389



CONSULTANTS

- STRUCTURAL ENGINEER
Fleming and Associates
1314 Roeford Road
Fayetteville, NC 28305-5026
910/433-2825 FAX 910/433-2604
- MECHANICAL AND ELECTRICAL ENGINEERS
Newcomb & Boyd
One Northside 75
Atlanta, Ga 30318-7761
404/352-3930 FAX 404/352-1826
- LANDSCAPE ARCHITECT
McBride Hess Design Group, PA
817-B Brooklyn Street
Raleigh, NC 27605-1420
919/821-3340 FAX 919/821-3314

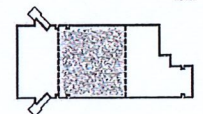
1 HR. WALL CONSTRUCTION

2 HR. WALL CONSTRUCTION

Newcomb & Boyd

Consulting Engineering Group
One Northside 75
Atlanta, Georgia 30318-7761
404-352-3930 T
404-352-1826 F

SHEET TITLE: LIGHTING PLAN -
GROUND FLOOR WEST
SCALE: 1/8" = 1'-0"
DATE: OCTOBER 24, 1997
PROJECT NO: 96W261
DRAWN BY: TSD
CHECKED BY: TJT
DESIGNED BY: TSD



KEY PLAN



DEPARTMENT OF
SOCIAL SERVICES
FAYETTEVILLE, NC

SHEET

E1.04

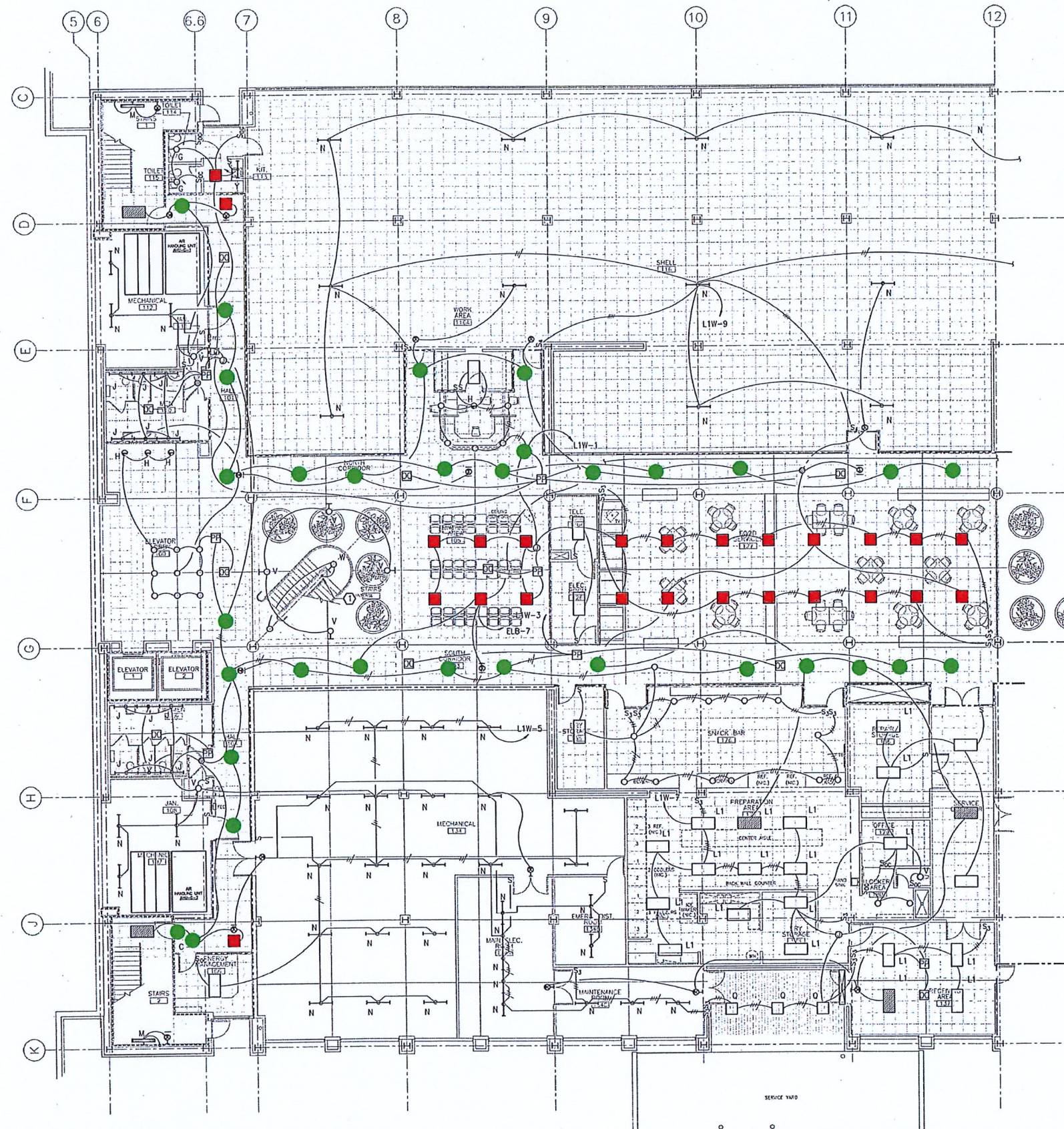
OF

GENERAL NOTES:

1. ALL 2' X 4' FIXTURES ARE TYPE "L" UNLESS OTHERWISE NOTED. ALL 2' X 2' FIXTURES ARE TYPE "D" UNLESS OTHERWISE NOTED. ALL RECESSED DOWNLIGHTS ARE TYPE "C" UNLESS OTHERWISE NOTED.

KEY NOTES:

- 1 CONCEAL CONDUIT RISER IN STAIR STRINGER. TYPICAL UP & DOWN USE #10 AWG. THRU-OUT CIRCUIT.



GROUND FLOOR CENTER

GROUND FLOOR

1/8" = 1'-0"

DATE: 10/24/97
DRAWN BY: TSD
CHECKED BY: TJT
DESIGNED BY: TSD



MAIN FLOOR RIGHT

MAIN FLOOR
1/8" = 1'-0"

CUBICLE PARTITIONS
TO BE PROVIDED
BY OTHERS.



The LSV Partnership-PA
Architects/Planners-AIA

P.O. Box 63713, 209 Fairway Drive
Fayetteville, N.C. 28305
(910) 485-4108 Fax (910) 485-8389



CONSULTANTS

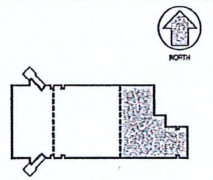
- STRUCTURAL ENGINEER
Fleming and Associates
1314 Reedford Road
Fayetteville, NC 28305-5026
910/433-2825 FAX 910/433-2604
- MECHANICAL AND ELECTRICAL ENGINEERS
Newcomb & Boyd
One Northside 75
Atlanta, Ga 30318-7761
404/352-3930 FAX 404/352-1826
- LANDSCAPE ARCHITECT
McBride Hess Design Group, PA
817-B Brooklyn Street
Raleigh, NC 27605-1420
919/821-3340 FAX 919/821-3314

1 HR. WALL CONSTRUCTION

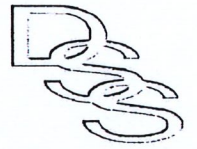
2 HR. WALL CONSTRUCTION

Newcomb & Boyd
Consulting Engineering Group
One Northside 75
Atlanta, Georgia 30318-7761
404-352-3930 T
404-352-1826 F

SHEET TITLE:
**LIGHTING PLAN -
MAIN FLOOR EAST**
SCALE: 1/8" = 1'-0"
DATE: OCTOBER 24, 1997
PROJECT NO: 96N261
DRAWN BY: TSD
CHECKED BY: TJT
DESIGNED BY: TSD



KEY PLAN



DEPARTMENT OF
SOCIAL SERVICES
FAYETTEVILLE, NC

SHEET

E1.06

OF



The LSV Partnership-PA
Architects/Planners/AIA
P.O. Box 63713, 209 Fairway Drive
Fayetteville, NC 28305
(910) 485-4108 Fax: (910) 485-8389

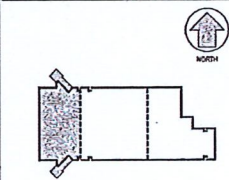
CONSULTANTS

- STRUCTURAL ENGINEER
Fleming and Associates
1314 Raeford Road
Fayetteville, NC 28305-5026
910/433-2825 FAX 910/433-2604
- MECHANICAL AND ELECTRICAL ENGINEERS
Newcomb & Boyd
One Northside 75
Atlanta, Ga 30318-7761
404/352-3930 FAX 404/352-1826
- LANDSCAPE ARCHITECT
McBride Hess Design Group, PA
817-B Broadway Street
Raleigh, NC 27605-1420
919/821-3340 FAX 919/821-3314

1 HR. WALL CONSTRUCTION
2 HR. WALL CONSTRUCTION

Newcomb & Boyd
Consulting Engineering Group
One Northside 75
Atlanta, Georgia 30318-7761
404-352-3930 T
404-352-1826 F

SHEET TITLE:
LIGHTING PLAN -
MAIN FLOOR WEST
SCALE: 1/8" = 1'-0"
DATE: OCTOBER 24, 1997
PROJECT NO: 96N261
DRAWN BY: TSD
CHECKED BY: TJT
DESIGNED BY: TSD



KEY PLAN



DEPARTMENT OF
SOCIAL SERVICES
FAYETTEVILLE, NC

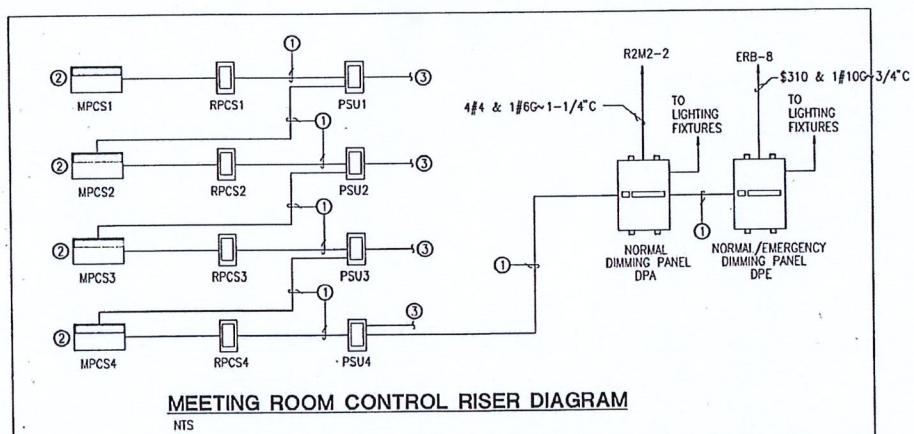
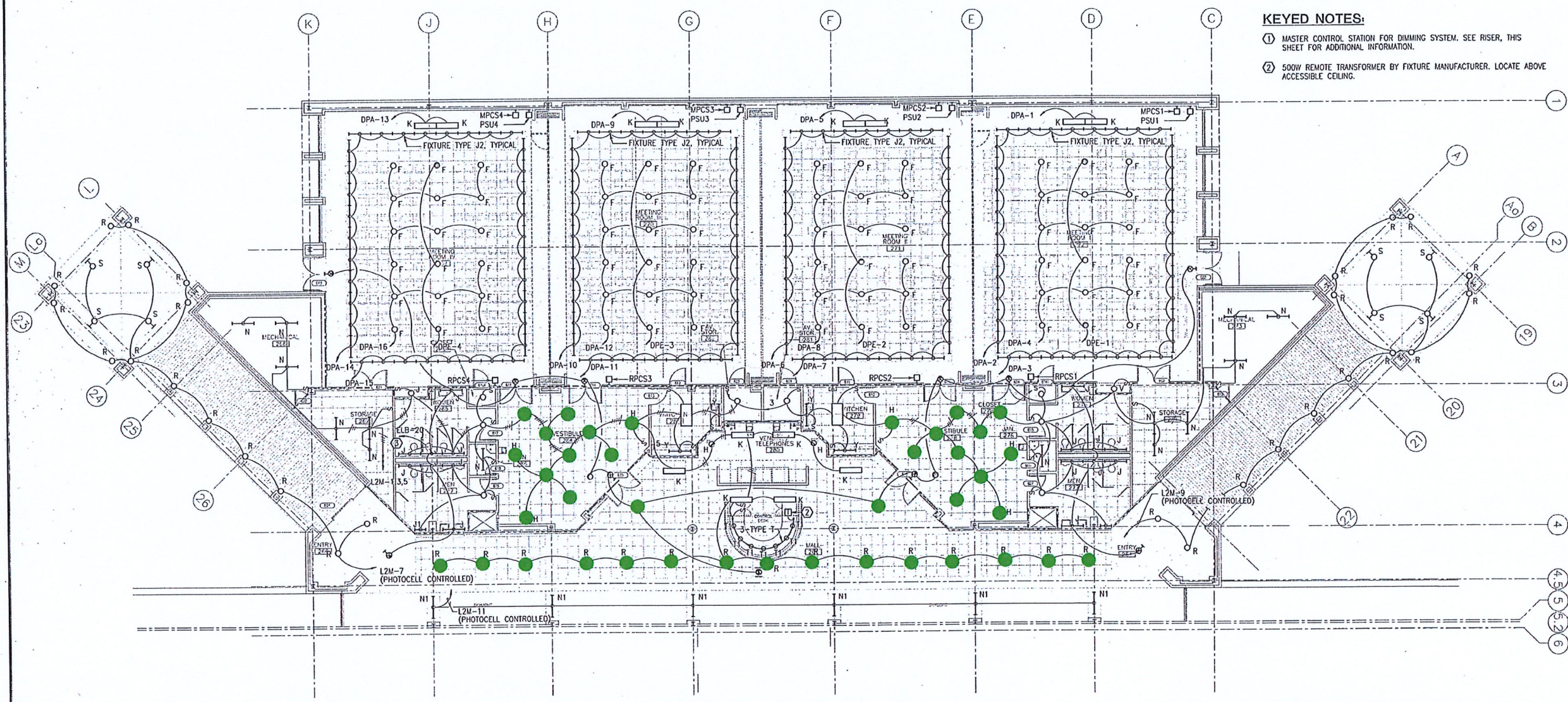
SHEET
E1.10
OF

GENERAL NOTES:

- ALL 2' X 4' FIXTURES ARE TYPE "L" UNLESS OTHERWISE NOTED. ALL 2' X 2' FIXTURES ARE TYPE "D" UNLESS OTHERWISE NOTED. ALL RECESSED DOWNLIGHTS ARE TYPE "C" UNLESS OTHERWISE NOTED.

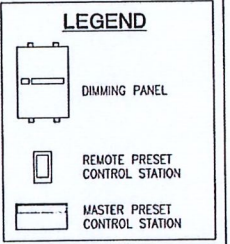
KEYED NOTES:

- MASTER CONTROL STATION FOR DIMMING SYSTEM. SEE RISER, THIS SHEET FOR ADDITIONAL INFORMATION.
- 500W REMOTE TRANSFORMER BY FIXTURE MANUFACTURER. LOCATE ABOVE ACCESSIBLE CEILING.



MEETING ROOM CONTROL RISER DIAGRAM
NTS

- KEYED NOTES: (THIS DIAGRAM ONLY)**
- PROVIDE LOW VOLTAGE WIRING BETWEEN LIGHTING CONTROL SYSTEM COMPONENTS AS REQUIRED BY MANUFACTURER.
 - PROGRAM THIS UNIT TO OPERATE INDIVIDUALLY WHEN ROOM PARTITION IS CLOSED AND TO OPERATE IN UNISON WITH ADJACENT CONTROL UNIT(S) WHEN ROOM PARTITION(S) IS OPEN. COORDINATE PROGRAMMING WITH REMOTE 2-BUTTON PARTITION STATUS UNIT.
 - CONNECT TO ROOM PARTITION CONTROLLER WITH LOW VOLTAGE, CLASS II TYPE WIRING AS REQUIRED BY MANUFACTURERS. PSU'S DO NOT CONTROL PARTITION. THEY INDICATE TO THE MPCS WHEN TO OPERATE IN THE OPEN PARTITION MODE OR THE CLOSED PARTITION MODE.



DIMMING PANEL DPA SCHEDULE

CIRCUIT NO.	DIMMING MODULE TYPE (NOTE 1)	LOAD DESCRIPTION	CONNECTED LOAD (WATTS)	CONTROL STATION NAME	CONTROL ZONE	REMARKS
DPA-1	F-ND	2-TYPE K	180	MPCS1	1	
DPA-2	F-ND	18-TYPE J2	1260		2	
DPA-3	F-ND	18-TYPE J2	1260		2	
DPA-4	I	16-TYPE F	1600		3	
DPA-5	F-ND	2-TYPE K	180	MPCS2	1	
DPA-6	F-ND	17-TYPE J2	1190		2	
DPA-7	F-ND	17-TYPE J2	1190	MPCS3	2	
DPA-8	I	16-TYPE F	1600		3	
DPA-9	F-ND	2-TYPE K	180	MPCS3	1	
DPA-10	F-ND	17-TYPE J2	1190		2	
DPA-11	F-ND	17-TYPE J2	1190	MPCS4	2	
DPA-12	I	16-TYPE F	1600		3	
DPA-13	F-ND	2-TYPE K	180	MPCS4	1	
DPA-14	F-ND	18-TYPE J2	1260		2	
DPA-15	F-ND	18-TYPE J2	1260		2	
DPA-16	I	16-TYPE F	1600		3	

DIMMING PANEL DPE SCHEDULE

CIRCUIT NO.	DIMMING MODULE TYPE (NOTE 1)	LOAD DESCRIPTION	CONNECTED LOAD (WATTS)	CONTROL STATION NAME	CONTROL ZONE	REMARKS
DPE-1	I	3-TYPE F	300	MPCS1	3	NOTE 2
DPE-2	I	3-TYPE F	300	MPCS2	3	NOTE 2
DPE-3	I	3-TYPE F	300	MPCS3	3	NOTE 2
DPE-4	I	3-TYPE F	300	MPCS4	3	NOTE 2

NOTES FOR DIMMING PANEL SCHEDULES DPA AND DPE:
1. TYPE:
I INCANDESCENT OR TUNGSTEN
F-ND FLUORESCENT, NONDIMMED
2. PROVIDE EMERGENCY OPERATION AS SPECIFIED IN SECTION 16590.

LIGHTING CONTROL STATION SCHEDULE

STATION NAME	STATION DESCRIPTION	LOCATION
MPCS1	MASTER PRESET CONTROL STATION WITH 4 PRESET LIGHTING SCENES AND 3 CONTROL ZONES.	MEETING ROOM I (272)
MPCS2	MASTER PRESET CONTROL STATION WITH 4 PRESET LIGHTING SCENES AND 3 CONTROL ZONES.	MEETING ROOM II (271)
MPCS3	MASTER PRESET CONTROL STATION WITH 4 PRESET LIGHTING SCENES AND 3 CONTROL ZONES.	MEETING ROOM III (270)
MPCS4	MASTER PRESET CONTROL STATION WITH 4 PRESET LIGHTING SCENES AND 3 CONTROL ZONES.	MEETING ROOM IV (269)
PSU1	REMOTE 2-BUTTON PARTITION STATUS UNIT WITH LED INDICATOR.	MEETING ROOM I (272)
PSU2	REMOTE 2-BUTTON PARTITION STATUS UNIT WITH LED INDICATOR.	MEETING ROOM II (271)
PSU3	REMOTE 2-BUTTON PARTITION STATUS UNIT WITH LED INDICATOR.	MEETING ROOM III (270)
PSU4	REMOTE 2-BUTTON PARTITION STATUS UNIT WITH LED INDICATOR.	MEETING ROOM IV (269)
RPCS1	REMOTE 2-BUTTON ENTRANCE CONTROL STATION TO CONTROL SCENE 1 AND OFF.	MEETING ROOM I (272)
RPCS2	REMOTE 2-BUTTON ENTRANCE CONTROL STATION TO CONTROL SCENE 1 AND OFF.	MEETING ROOM II (271)
RPCS3	REMOTE 2-BUTTON ENTRANCE CONTROL STATION TO CONTROL SCENE 1 AND OFF.	MEETING ROOM III (270)
RPCS4	REMOTE 2-BUTTON ENTRANCE CONTROL STATION TO CONTROL SCENE 1 AND OFF.	MEETING ROOM IV (269)

MAIN FLOOR
1/8" = 1'-0"

MAIN FLOOR LEFT



The LSV Partnership-PA
Architects/Planners/AIA

P.O. Box 53713, 209 Fairway Drive
Fayetteville, N.C. 28305
(910) 485-4108 Fax: (910) 485-8389



CONSULTANTS

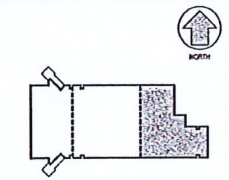
- STRUCTURAL ENGINEER
Fleming and Associates
1314 Rosford Road
Fayetteville, NC 28305-5026
910/433-2825 FAX 910/433-2604
- MECHANICAL AND ELECTRICAL ENGINEERS
Newcomb & Boyd
One Northside 75
Atlanta, Ga 30318-7761
404/352-3930 FAX 404/352-1826
- LANDSCAPE ARCHITECT
McBride Hess Design Group, PA
817-B Brooklyn Street
Raleigh, NC 27605-1420
919/821-3340 FAX 919/821-3314

1 HR. WALL CONSTRUCTION

2 HR. WALL CONSTRUCTION

Newcomb & Boyd
Consulting Engineering Group
One Northside 75
Atlanta, Georgia 30318-7761
404-352-3930 T
404-352-1826 F

SHEET TITLE:
**LIGHTING PLAN -
SECOND FLOOR EAST**
SCALE: 1/8" = 1'-0"
DATE: OCTOBER 24, 1997
PROJECT NO: 96N261
DRAWN BY: TSD
CHECKED BY: TJT
DESIGNED BY: TSD



KEY PLAN



DEPARTMENT OF
SOCIAL SERVICES
FAYETTEVILLE, NC

SHEET

E1.12

OF

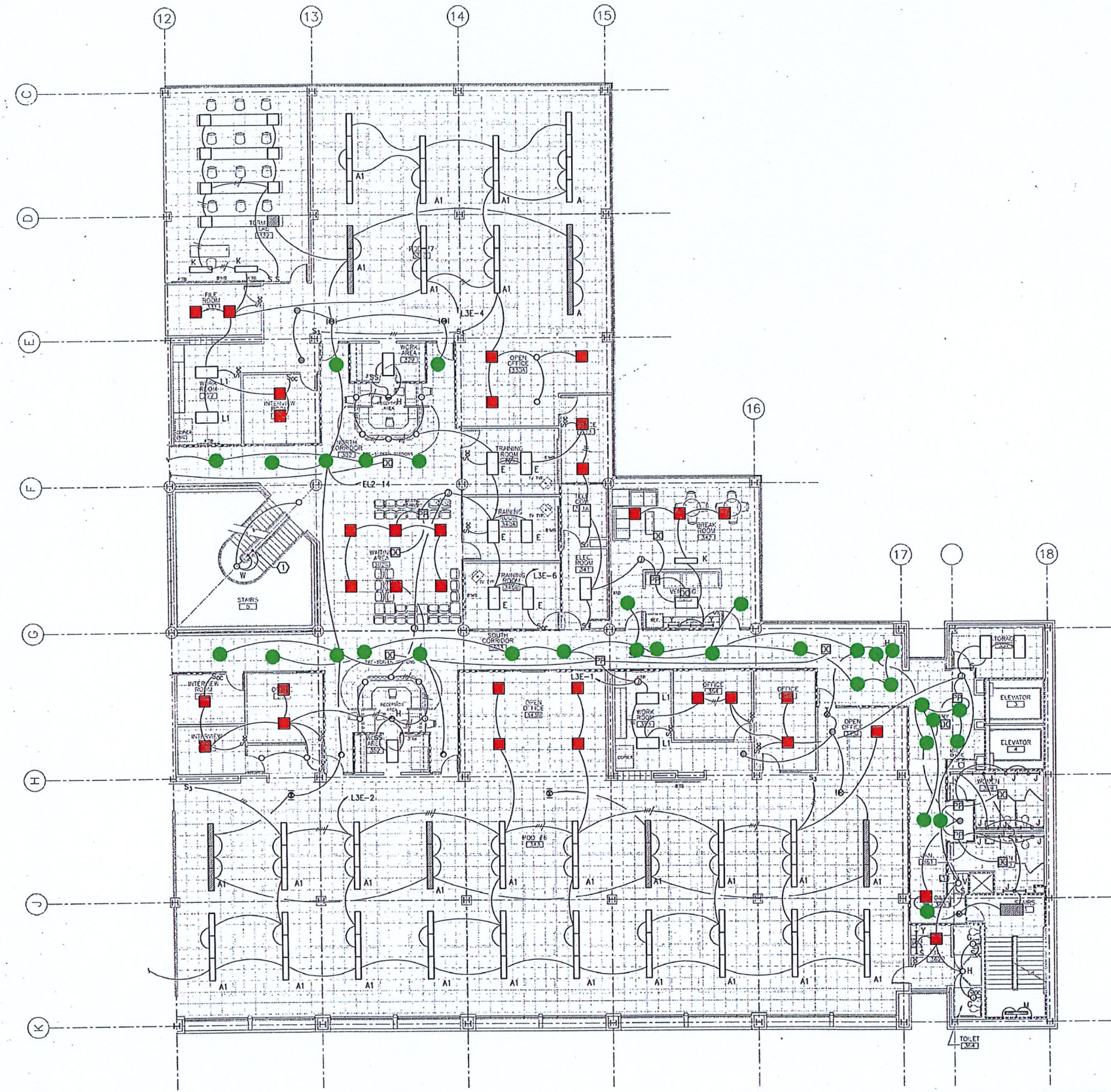
GENERAL NOTES:

1. ALL 2" X 4" FIXTURES ARE TYPE "1" UNLESS OTHERWISE NOTED. ALL 2" X 2" FIXTURES ARE TYPE "D" UNLESS OTHERWISE NOTED. ALL RECESSED DOWNLIGHTS ARE TYPE "C" UNLESS OTHERWISE NOTED.

KEY NOTES:

1. CONCEAL CONDUIT RISER IN STAIR STRINGER. TYPICAL UP & DOWN USE #10 AWG. THRU-OUT CIRCUIT.

SECOND FLOOR RIGHT



SECOND FLOOR
1/8" = 1'-0"

CUBICLE PARTITIONS
TO BE PROVIDED
BY OTHERS.

DATE: 10/24/97
DRAWN BY: TSD
CHECKED BY: TJT
DESIGNED BY: TSD



The LSV Partnership-PA
Architects/Planners-AIA

P.O. Box 63713, 209 Parkway Drive
Fayetteville, NC, 28305
(910) 485-4108 Fax (910) 485-9389



CONSULTANTS

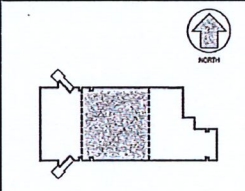
- STRUCTURAL ENGINEER
Fleming and Associates
1314 Roeford Road
Fayetteville, NC 28305-5026
910/433-2825 FAX 910/433-2604
- MECHANICAL AND ELECTRICAL ENGINEERS
Newcomb & Boyd
One Northside 75
Atlanta, Ga. 30318-7761
404/352-3930 FAX 404/352-1826
- LANDSCAPE ARCHITECT
McBride Hess Design Group, PA
817-B Brooklyn Street
Raleigh, NC 27605-1420
919/821-3340 FAX 919/821-3314

1 HR. WALL CONSTRUCTION

2 HR WALL CONSTRUCTION

Newcomb & Boyd
Consulting Engineering Group
One Northside 75
Atlanta, Georgia 30318-7761
404-352-3930 T
404-352-1826 F

SHEET TITLE:
LIGHTING PLAN -
SECOND FLOOR WEST
SCALE: 1/8" = 1'-0"
DATE: OCTOBER 24, 1997
PROJECT NO: 96N261
DRAWN BY: TSD
CHECKED BY: TJT
DESIGNED BY: TSD



KEY PLAN



DEPARTMENT OF
SOCIAL SERVICES
FAYETTEVILLE, NC

SHEET

E1.14

OF

GENERAL NOTES:

1. ALL 2' X 4' FIXTURES ARE TYPE "L" UNLESS OTHERWISE NOTED. ALL 2' X 2' FIXTURES ARE TYPE "D" UNLESS OTHERWISE NOTED. ALL RECESSED DOWNLIGHTS ARE TYPE "C" UNLESS OTHERWISE NOTED.

KEY NOTES:

1. CONCEAL CONDUIT RISER IN STAIR STRINGER. TYPICAL UP & DOWN USE #10 AWG. THRU-OUT CIRCUIT.



SECOND FLOOR CENTER

SECOND FLOOR
1/8" = 1'-0"

CUBICLE PARTITIONS
TO BE PROVIDED
BY OTHERS.

DATE: 10/24/97
DRAWN BY: TSD
CHECKED BY: TJT
DESIGNED BY: TSD



The LSV Partnership-PA
Architects/Planners/AIA

P.O. Box 63710, 209 Parkway Drive
Fayetteville, NC, 28505
(910) 485-4108 Fax (910) 485-8389



CONSULTANTS

- STRUCTURAL ENGINEER
Pleming and Associates
1314 Roanoke Road
Fayetteville, NC 28305-5026
910/433-2825 FAX 910/433-2604
- MECHANICAL AND ELECTRICAL ENGINEERS
Newcomb & Boyd
One Northside 75
Atlanta, Ga 30318-7761
404/352-3930 FAX 404/352-1826
- LANDSCAPE ARCHITECT
McBride Hess Design Group, PA
817-B Brooklyn Street
Raleigh, NC 27605-1420
919/821-3340 FAX 919/821-3314

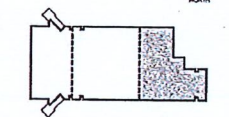
1 HR. WALL CONSTRUCTION

2 HR. WALL CONSTRUCTION

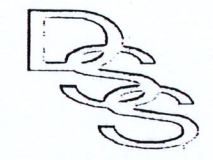
Newcomb & Boyd

Consulting Engineering Group
One Northside 75
Atlanta, Georgia 30318-7761
404-352-3930 T
404-352-1826 F

SHEET TITLE:
LIGHTING PLAN -
THIRD FLOOR EAST
SCALE: 1/8" = 1'-0"
DATE: OCTOBER 24, 1997
PROJECT NO: 96N261
DRAWN BY: TSD
CHECKED BY: TJT
DESIGNED BY: TSD



KEY PLAN



DEPARTMENT OF
SOCIAL SERVICES
FAYETTEVILLE, NC

SHEET

E1.16

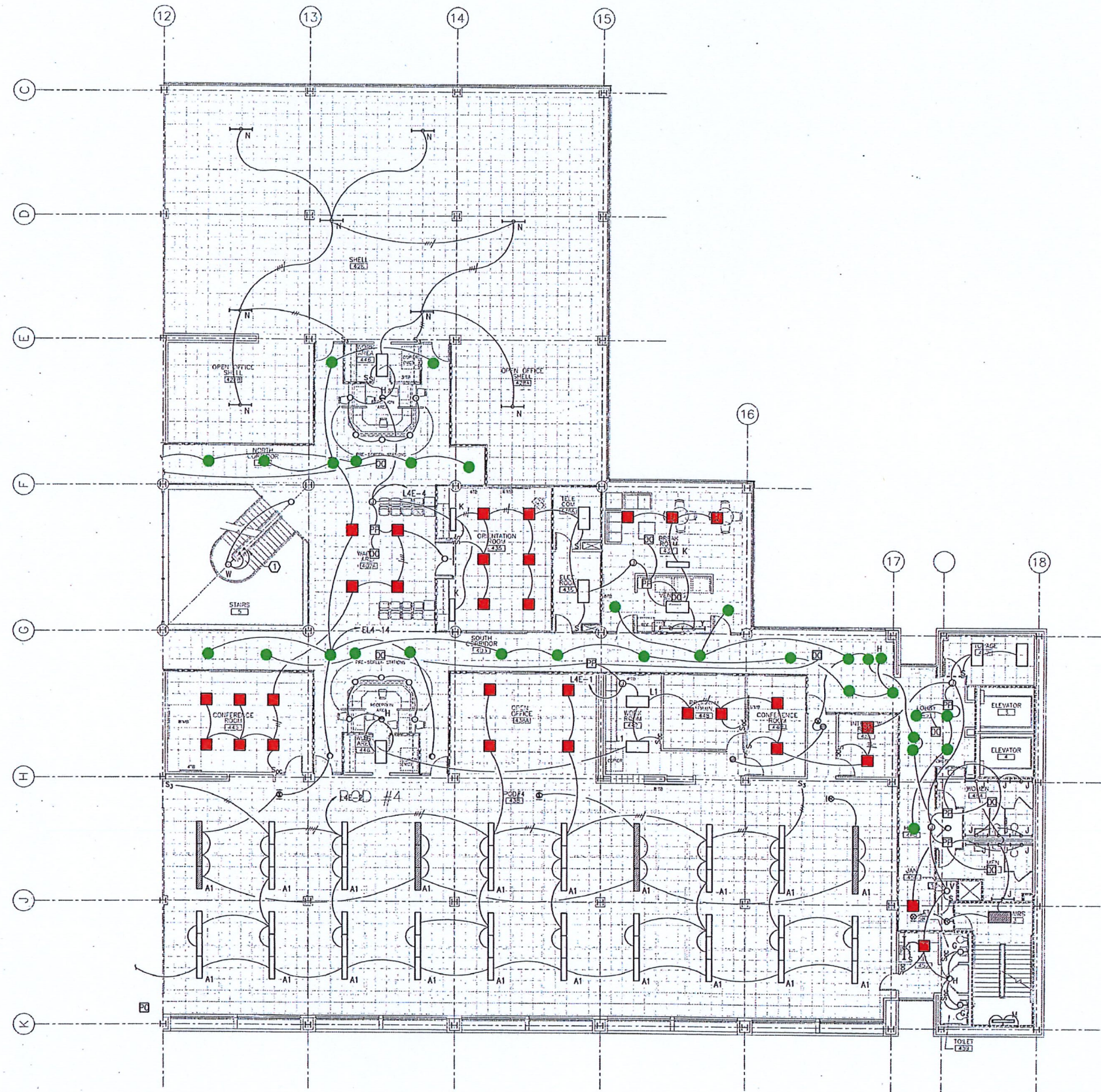
OF

GENERAL NOTES:

1. ALL 2" X 4" FIXTURES ARE TYPE "L" UNLESS OTHERWISE NOTED. ALL 2' X 2' FIXTURES ARE TYPE "D" UNLESS OTHERWISE NOTED. ALL RECESSED DOWNLIGHTS ARE TYPE "C" UNLESS OTHERWISE NOTED.

KEY NOTES:

- 1 CONCEAL CONDUIT RISER IN STAIR STRINGER. TYPICAL UP & DOWN USE #10 AWG. THRU-OUT CIRCUIT.



THIRD FLOOR RIGHT

THIRD FLOOR
1/8" = 1'-0"

CUBICLE PARTITIONS
TO BE PROVIDED
BY OTHERS.



The LSV Partnership-PA
Architects/Planners-AIA
P.O. Box 53713, 209 Fairway Drive
Fayetteville, NC, 28305
910/433-2825 Fax 910/433-2604
(910) 485-4108 Fax (910) 485-8389



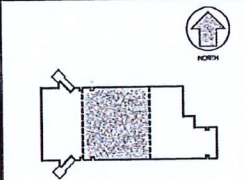
CONSULTANTS

- STRUCTURAL ENGINEER
Pleming and Associates
1314 Roelford Road
Fayetteville, NC 28305-5026
910/433-2825 FAX 910/433-2604
- MECHANICAL AND ELECTRICAL ENGINEERS
Newcomb & Boyd
One Northside 75
Atlanta, Ga 30318-7761
404/352-3930 FAX 404/352-1826
- LANDSCAPE ARCHITECT
McBride Hess Design Group, PA
817-B Brooklyn Street
Raleigh, NC 27605-1420
919/821-3340 FAX 919/821-3314

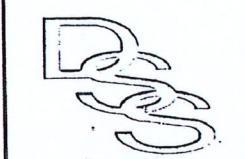
- 1 HR. WALL CONSTRUCTION
- 2 HR. WALL CONSTRUCTION

Newcomb & Boyd
Consulting Engineering Group
One Northside 75
Atlanta, Georgia 30318-7761
404-352-3930 T
404-352-1826 F

SHEET TITLE:
LIGHTING PLAN -
THIRD FLOOR WEST
SCALE: 1/8" = 1'-0"
DATE: OCTOBER 24, 1997
PROJECT NO: 96N261
DRAWN BY: TSD
CHECKED BY: TJT
DESIGNED BY: TSD



KEY PLAN

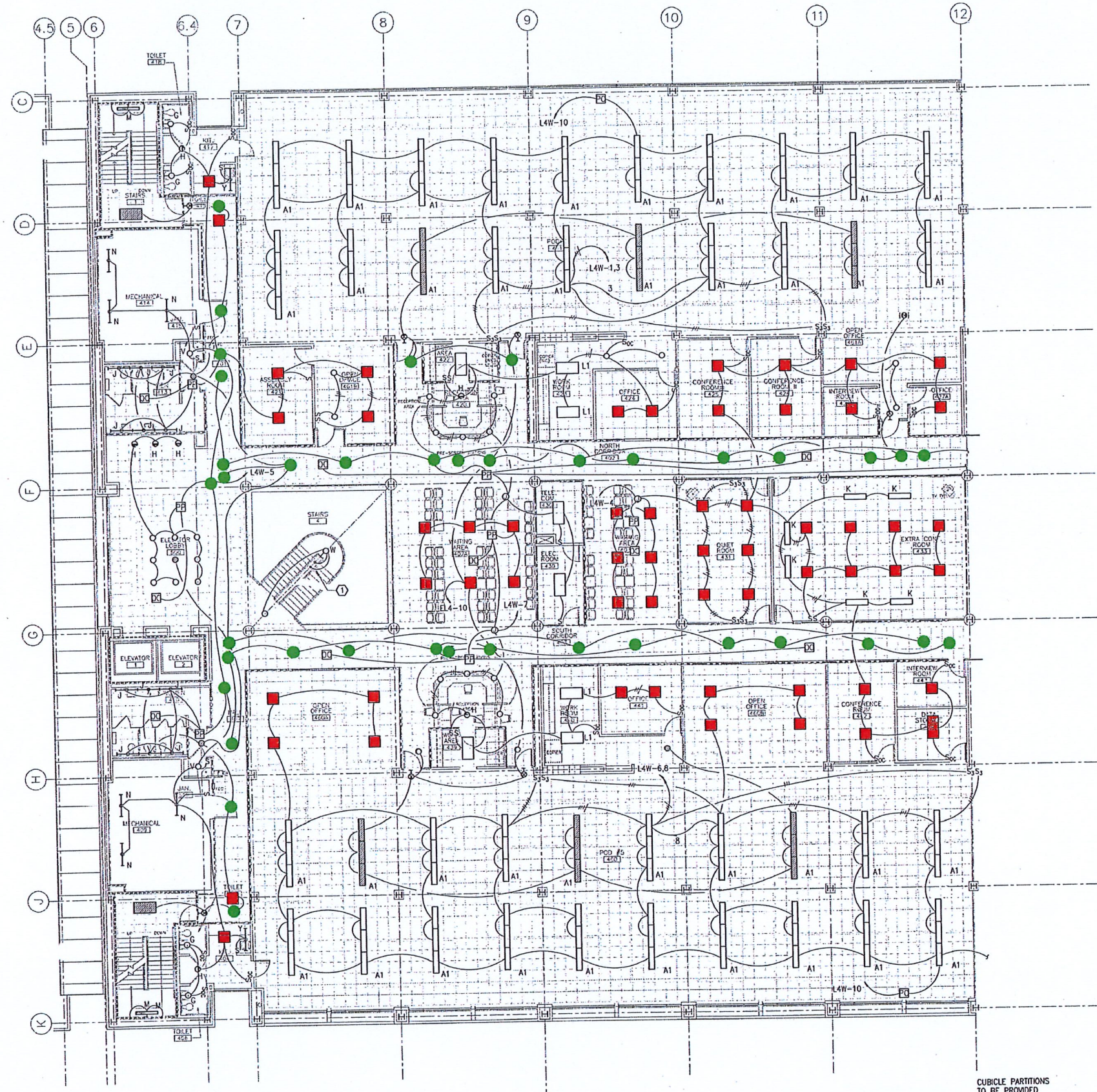


DEPARTMENT OF
SOCIAL SERVICES
FAYETTEVILLE, NC

SHEET

E1.18

OF



THIRD FLOOR CENTER

THIRD FLOOR
1/8" = 1'-0"

CUBICLE PARTITIONS
TO BE PROVIDED
BY OTHERS.

DATE: 10/24/97
 DRAWN BY: TSD
 CHECKED BY: TJT
 DESIGNED BY: TSD



The LSV Partnership-PA
Architects/Planners-AIA

P.O. Box 63713, 209 Fairway Drive
Fayetteville, NC, 28305
(910) 485-4108 Fax (910) 485-8389



CONSULTANTS

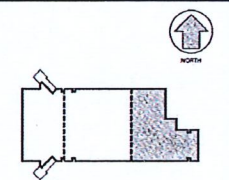
- STRUCTURAL ENGINEER
Fleming and Associates
1314 Reelford Road
Fayetteville, NC 28305-5026
910/433-2825 FAX 910/433-2604
- MECHANICAL AND ELECTRICAL ENGINEERS
Newcomb & Boyd
One Northside 75
Atlanta, Ga 30318-7761
404/352-3930 FAX 404/352-1826
- LANDSCAPE ARCHITECT
McBride Hess Design Group, PA
817-B Brooklyn Street
Raleigh, NC 27605-1420
919/821-3340 FAX 919/821-3314

1 HR. WALL CONSTRUCTION

2 HR. WALL CONSTRUCTION

Newcomb & Boyd
Consulting Engineering Group
One Northside 75
Atlanta, Georgia 30318-7761
404-352-3930 T
404-352-1826 F

SHEET TITLE:
**LIGHTING PLAN -
FOURTH FLOOR EAST**
SCALE: 1/8" = 1'-0"
DATE: OCTOBER 24, 1997
PROJECT NO: 96N261
DRAWN BY: TSD
CHECKED BY: TJT
DESIGNED BY: TSD



KEY PLAN



DEPARTMENT OF
SOCIAL SERVICES
FAYETTEVILLE, NC

SHEET

E1.20

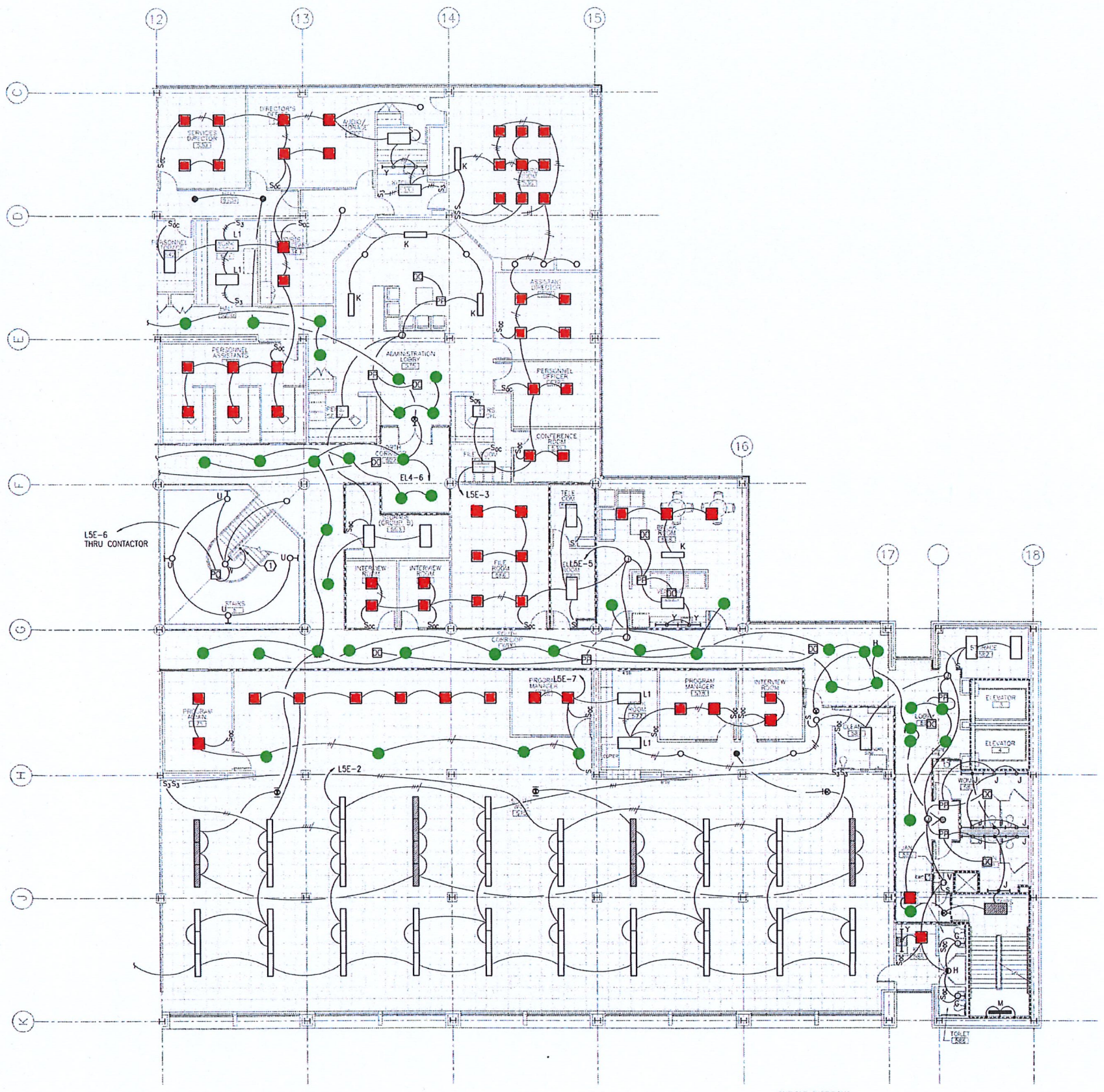
OF

GENERAL NOTES:

1. ALL 2' X 4' FIXTURES ARE TYPE "L" UNLESS OTHERWISE NOTED. ALL 2' X 2' FIXTURES ARE TYPE "D" UNLESS OTHERWISE NOTED. ALL RECESSED DOWNLIGHTS ARE TYPE "C" UNLESS OTHERWISE NOTED.

KEY NOTES:

1. CONCEAL CONDUIT RISER IN STAIR STRINGER. TYPICAL UP & DOWN USE #10 AWG. THRU-OUT CIRCUIT.



FOURTH FLOOR RIGHT

CUBICLE PARTITIONS
TO BE PROVIDED
BY OTHERS.

FOURTH FLOOR

1/8" = 1'-0"

DATE: 10/24/97
 DRAWN BY: TSD
 CHECKED BY: TJT
 DESIGNED BY: TSD



The LSV Partnership-PA
Architects/Planners-AIA

P.O. Box 63713, 209 Fairway Drive
Fayetteville, NC 28305
(910) 485-4109 Fax (910) 485-8389



GENERAL NOTES:

1. ALL 2' X 4' FIXTURES ARE TYPE "L" UNLESS OTHERWISE NOTED. ALL 2' X 2' FIXTURES ARE TYPE "D" UNLESS OTHERWISE NOTED. ALL RECESSED DOWNLIGHTS ARE TYPE "C" UNLESS OTHERWISE NOTED.

KEYED NOTES:

- ① FIXTURE TO BE MOUNTED TO INDIRECTLY ILLUMINATE SKYLIGHT (i.e. INVERTED SO LAMP POINTS UPWARD).
- ② CONCEAL CONDUIT RISER IN STAIR STRINGER. TYPICAL UP & DOWN USE #10 AWG. THRU-OUT CIRCUIT.

CONSULTANTS

- STRUCTURAL ENGINEER
Flaming and Associates
1314 Roeford Road
Fayetteville, NC 28302-5024
910/433-2825 FAX 910/433-2604
- MECHANICAL AND ELECTRICAL ENGINEERS
Newcomb & Boyd
One Northside 75
Atlanta, Ga. 30318-7761
404/352-3930 FAX 404/352-1826
- LANDSCAPE ARCHITECT
McBride Hess Design Group, PA
817-B Brooklyn Street
Raleigh, NC 27605-1420
919/821-3340 FAX 919/821-3314

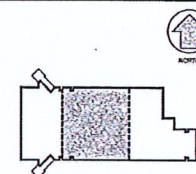
1 HR. WALL CONSTRUCTION

2 HR WALL CONSTRUCTION

Newcomb & Boyd

Consulting Engineering Group
One Northside 75
Atlanta, Georgia 30318-7761
404-352-3930 T
404-352-1826 F

SHEET TITLE: LIGHTING PLAN -
FOURTH FLOOR WEST
SCALE: 1/8" = 1'-0"
DATE: OCTOBER 24, 1997
PROJECT NO: 96N261
DRAWN BY: TSD
CHECKED BY: TJJ
DESIGNED BY: TSD



KEY PLAN



DEPARTMENT OF
SOCIAL SERVICES
FAYETTEVILLE, NC

SHEET

E1.22

OF



FOURTH FLOOR CENTER

FOURTH FLOOR

1/8" = 1'-0"

CUBICLE PARTITIONS
TO BE PROVIDED
BY OTHERS.

Replaced with
duplex hmi fluorescent

DATE: 10/24/97
DRAWN BY: TSD
CHECKED BY: TJJ
DESIGNED BY: TSD