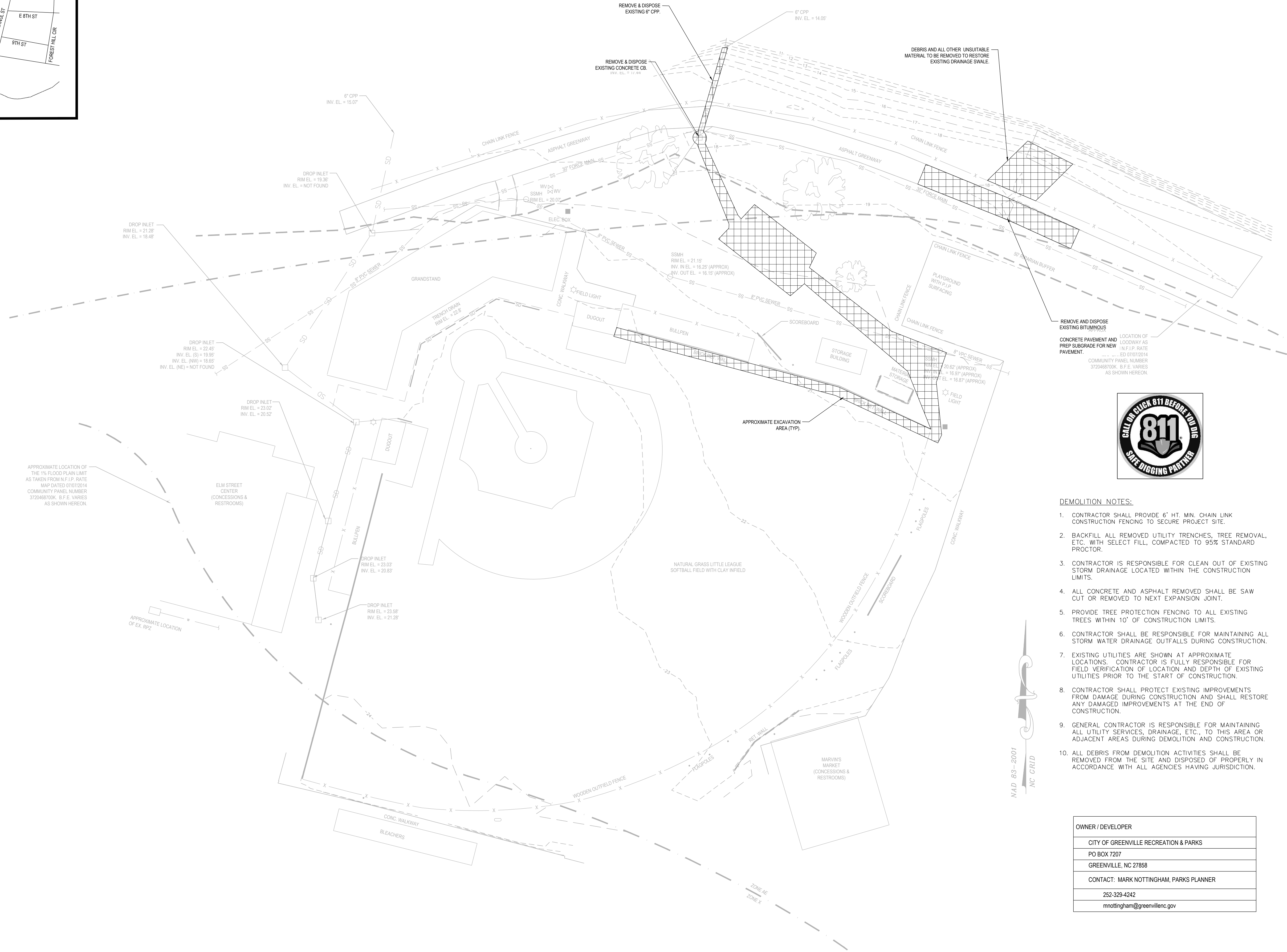


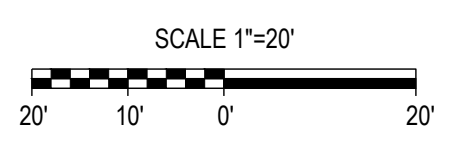
VICINITY MAP  
SCALE NTS



APPROXIMATE LOCATION OF THE 1% FLOOD PLAIN LIMIT AS TAKEN FROM N.F.P. RATE MAP DATED 07/07/2014. COMMUNITY PANEL NUMBER 3720468700K. B.F.E. VARIES AS SHOWN HEREON.

ELM STREET CENTER (CONCESSIONS & RESTROOMS)

MARVIN'S MARKET (CONCESSIONS & RESTROOMS)



MAD 83-2001  
NC CR1D

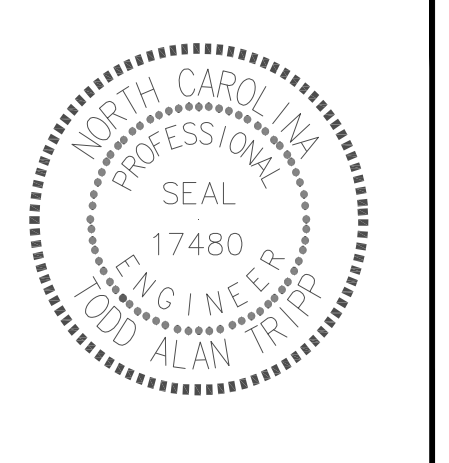
**THE EAST GROUP**

- Engineering
- Architecture
- Surveying
- Technology

Corporate Office  
324 Evans Street  
Greenville, NC 27858  
P: 252.758.3746  
F: 252.830.3954

Branch Office  
4325 Lake Boone Trail, Suite 311  
Raleigh, NC 27607  
P: 919.784.9330  
F: 919.784.9331

NC Engineering Lic. No. C-0206  
NC Architectural Lic. No. 60213  
NC Landscape Architectural Lic. No. C-427



**DEMOLITION NOTES:**

- CONTRACTOR SHALL PROVIDE 6' HT. MIN. CHAIN LINK CONSTRUCTION FENCING TO SECURE PROJECT SITE.
- BACKFILL ALL REMOVED UTILITY TRENCHES, TREE REMOVAL, ETC. WITH SELECT FILL, COMPACTED TO 95% STANDARD PROCTOR.
- CONTRACTOR IS RESPONSIBLE FOR CLEAN OUT OF EXISTING STORM DRAINAGE LOCATED WITHIN THE CONSTRUCTION LIMITS.
- ALL CONCRETE AND ASPHALT REMOVED SHALL BE SAW CUT OR REMOVED TO NEXT EXPANSION JOINT.
- PROVIDE TREE PROTECTION FENCING TO ALL EXISTING TREES WITHIN 10' OF CONSTRUCTION LIMITS.
- CONTRACTOR SHALL BE RESPONSIBLE FOR MAINTAINING ALL STORM WATER DRAINAGE OUTFALLS DURING CONSTRUCTION.
- EXISTING UTILITIES ARE SHOWN AT APPROXIMATE LOCATIONS. CONTRACTOR IS FULLY RESPONSIBLE FOR FIELD VERIFICATION OF LOCATION AND DEPTH OF EXISTING UTILITIES PRIOR TO THE START OF CONSTRUCTION.
- CONTRACTOR SHALL PROTECT EXISTING IMPROVEMENTS FROM DAMAGE DURING CONSTRUCTION AND SHALL RESTORE ANY DAMAGED IMPROVEMENTS AT THE END OF CONSTRUCTION.
- GENERAL CONTRACTOR IS RESPONSIBLE FOR MAINTAINING ALL UTILITY SERVICES, DRAINAGE, ETC., TO THIS AREA OR ADJACENT AREAS DURING DEMOLITION AND CONSTRUCTION.
- ALL DEBRIS FROM DEMOLITION ACTIVITIES SHALL BE REMOVED FROM THE SITE AND DISPOSED OF PROPERLY IN ACCORDANCE WITH ALL AGENCIES HAVING JURISDICTION.

OWNER / DEVELOPER	
CITY OF GREENVILLE RECREATION & PARKS	
PO BOX 7207	
GREENVILLE, NC 27858	
CONTACT: MARK NOTTINGHAM, PARKS PLANNER	
252-329-4242	
mnottingham@greenvillenc.gov	

REV#	DATE	DESCRIPTION	BY	CHK

TEG PROJECT NO. 20240091

CLIENT PROJECT NO.

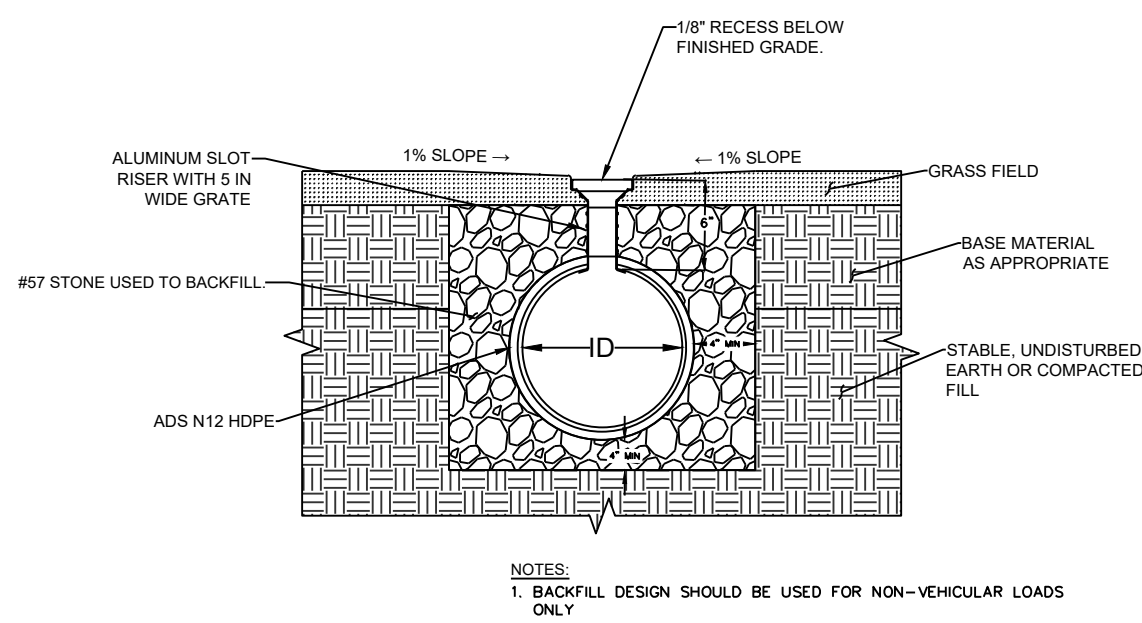
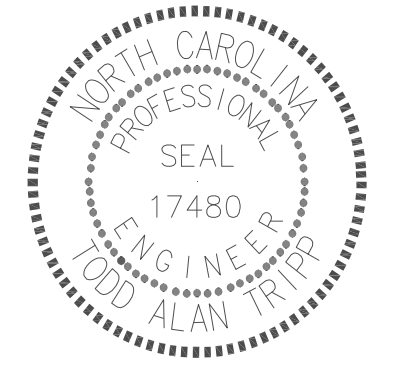
PROJECT TITLE  
**COG STALLING STADIUM  
DRAINAGE IMPROVEMENTS**  
1055 S ELM STREET  
GREENVILLE, 27858  
PITT COUNTY

SHEET NAME  
**EXISTING CONDITIONS  
AND DEMOLITION PLAN**

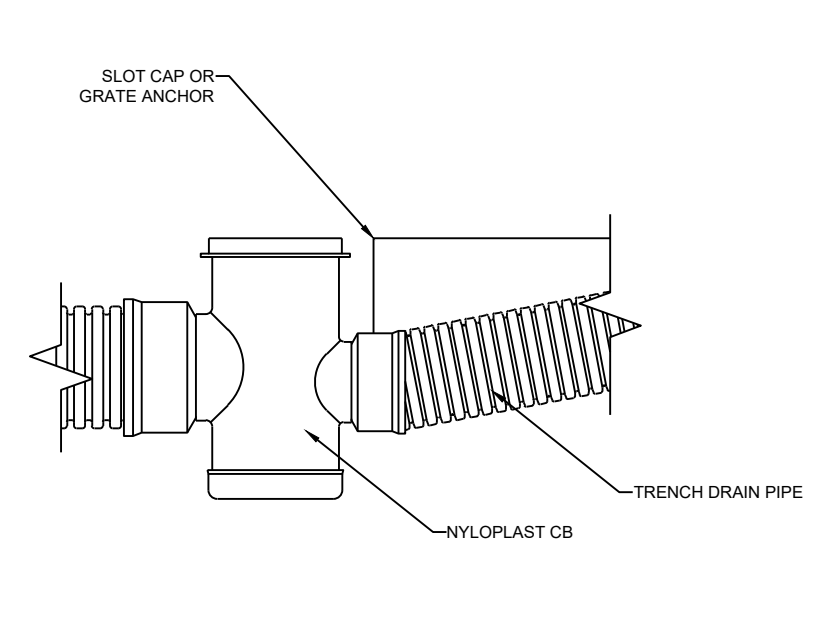
SHEET NO.  
**C0.1**

K:\CADD\2024\091 COG Stalling Stadium Drainage\CD\CD\Project\PE\DWG\SHEET\SCM\Sheet\SCM20240091\_C0.1\_COMP.dwg

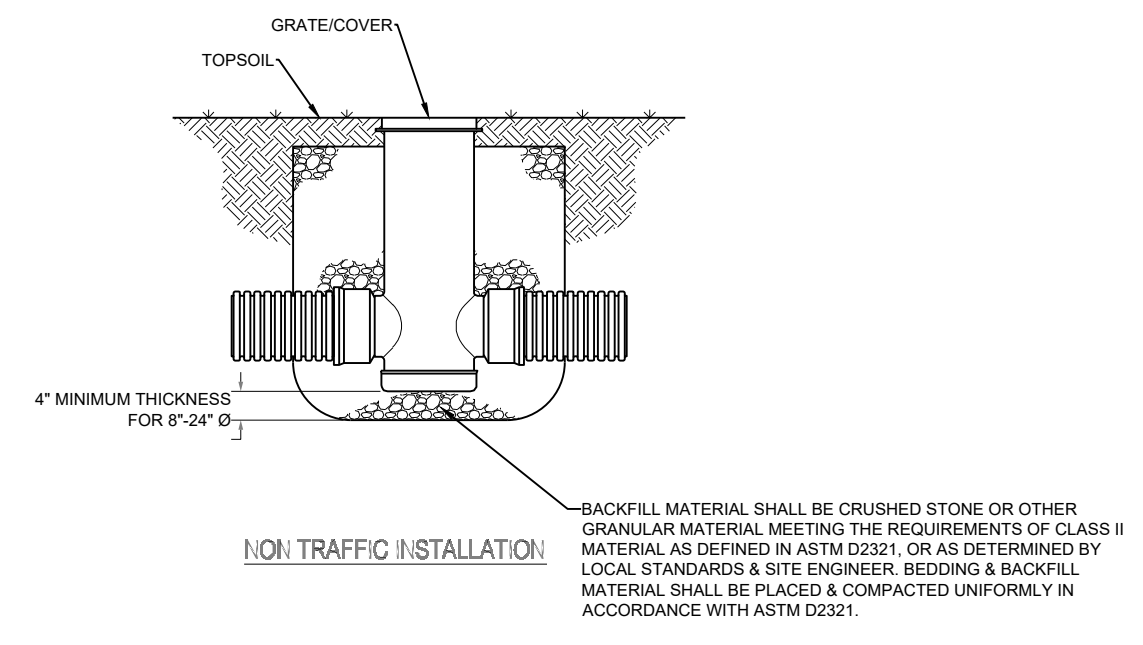




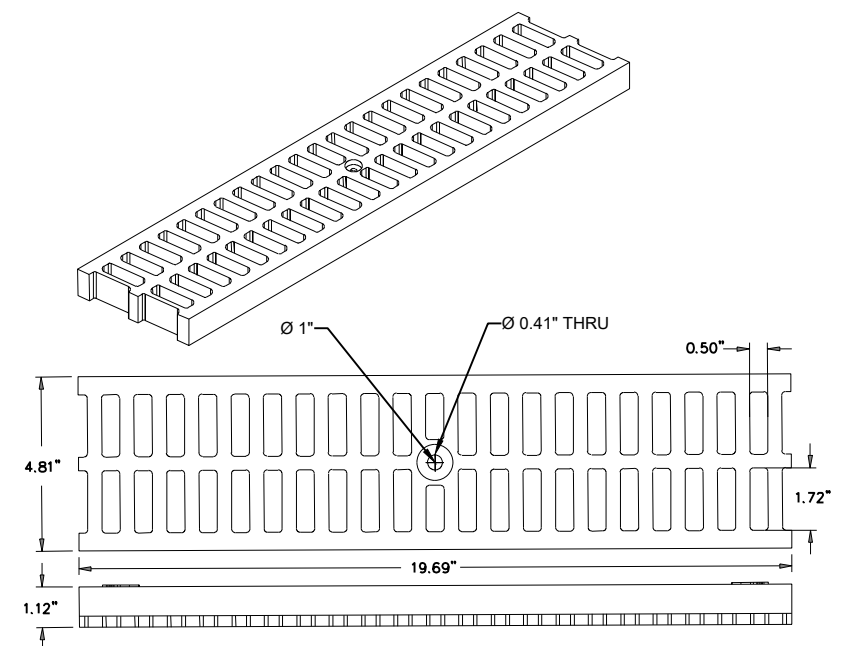
1 TRENCH DRAIN DETAIL  
 (C2.1) N.T.S.



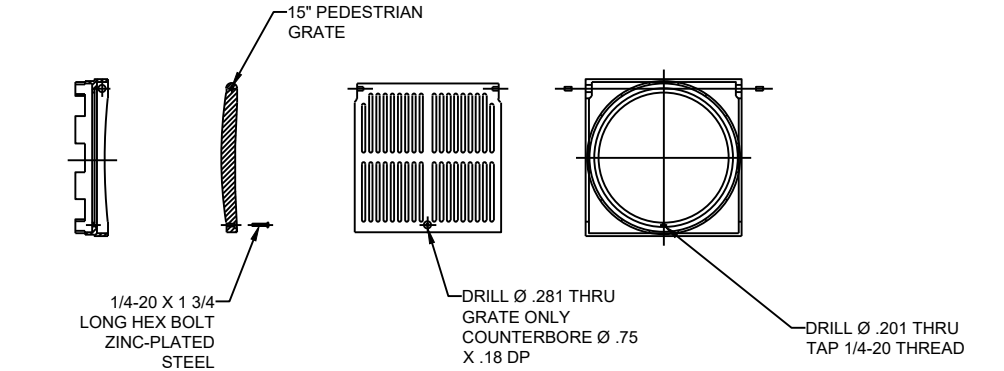
2 TRENCH DRAIN PIPING CONNECTION DETAIL  
 (C2.1) N.T.S.



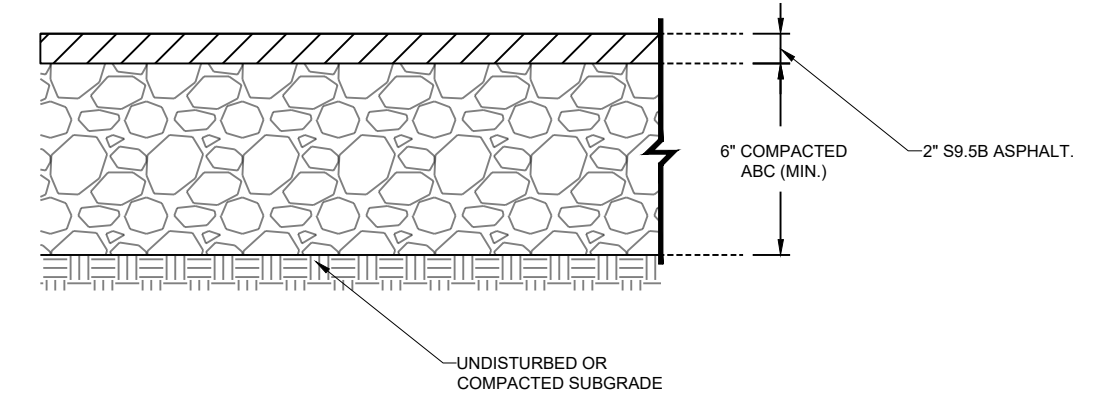
3 NYLOPLAST CB DETAIL  
 (C2.1) N.T.S.



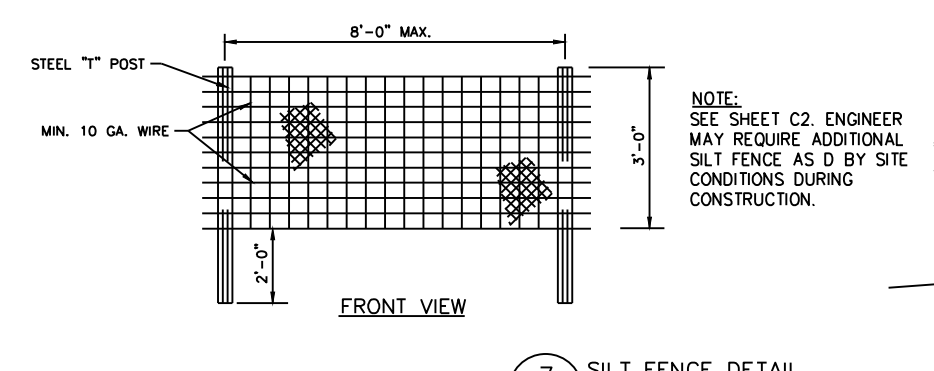
4 TRENCH DRAIN GRATE DETAIL  
 (C2.1) N.T.S.



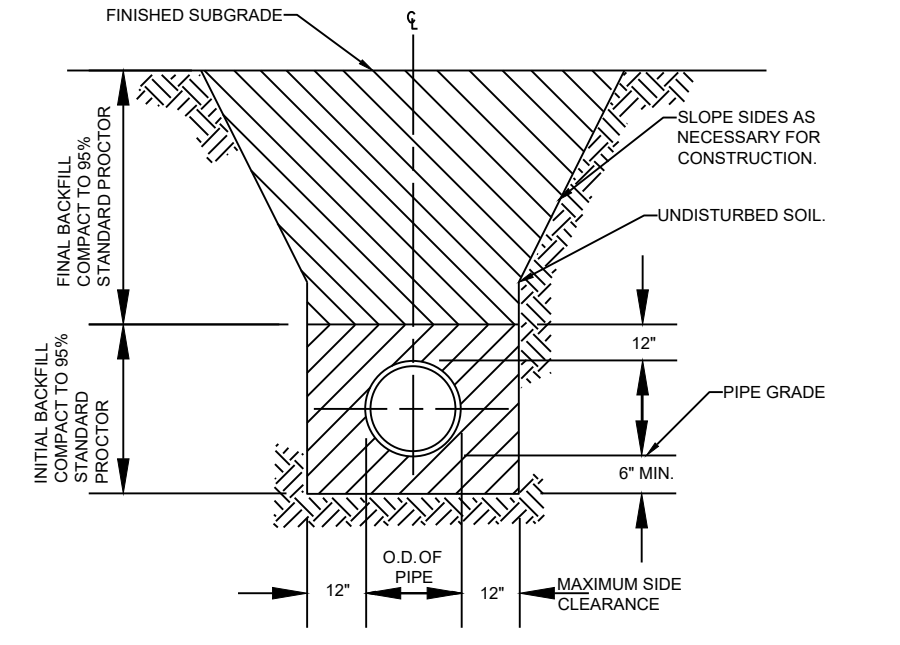
5 NYLOPLAST CB FRAME & GRATE DETAIL  
 (C2.1) N.T.S.



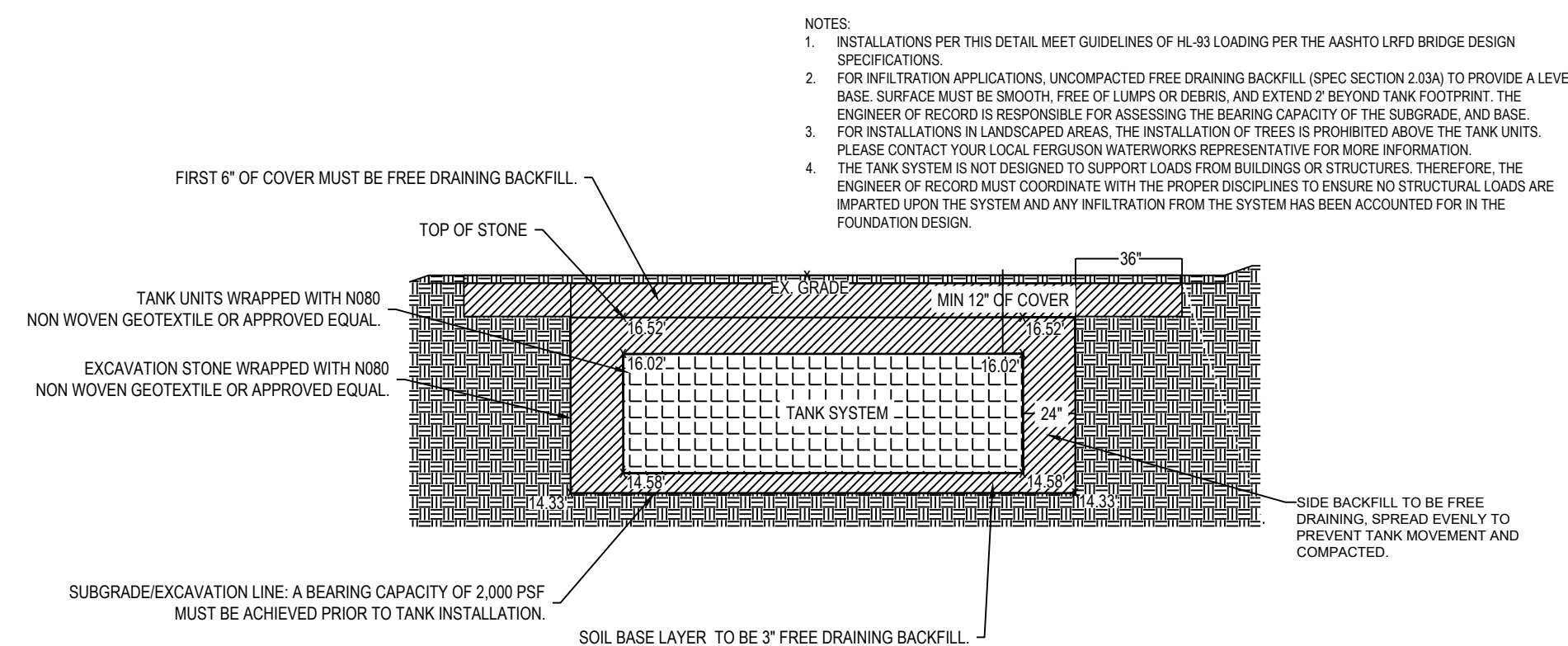
6 BIT CONC. PAVEMENT DETAIL  
 (C2.1) N.T.S.



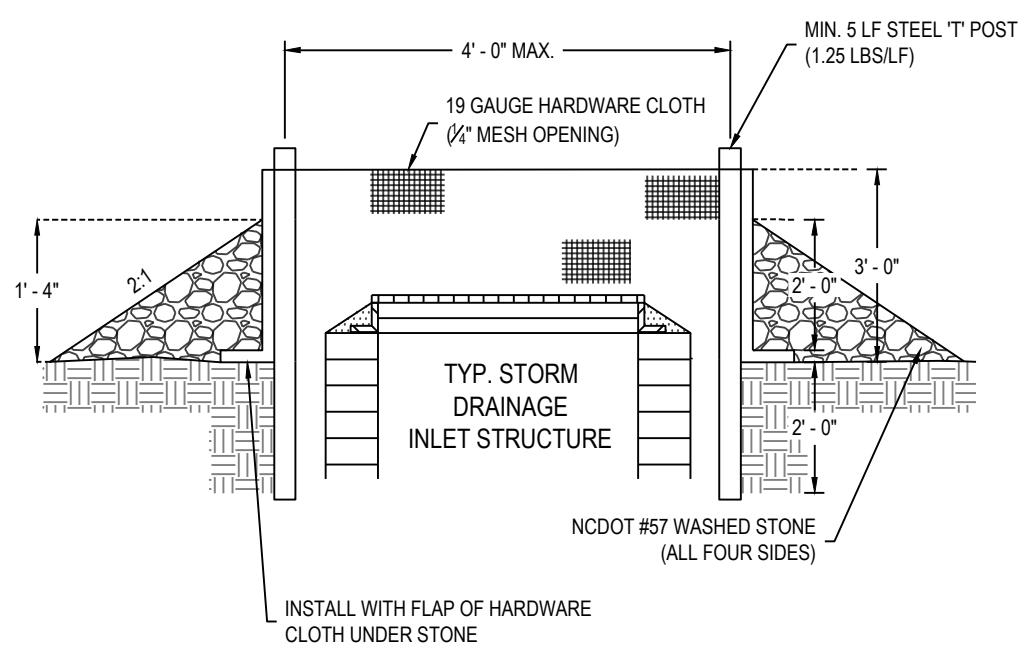
7 SILT FENCE DETAIL  
 (C2.1) N.T.S.



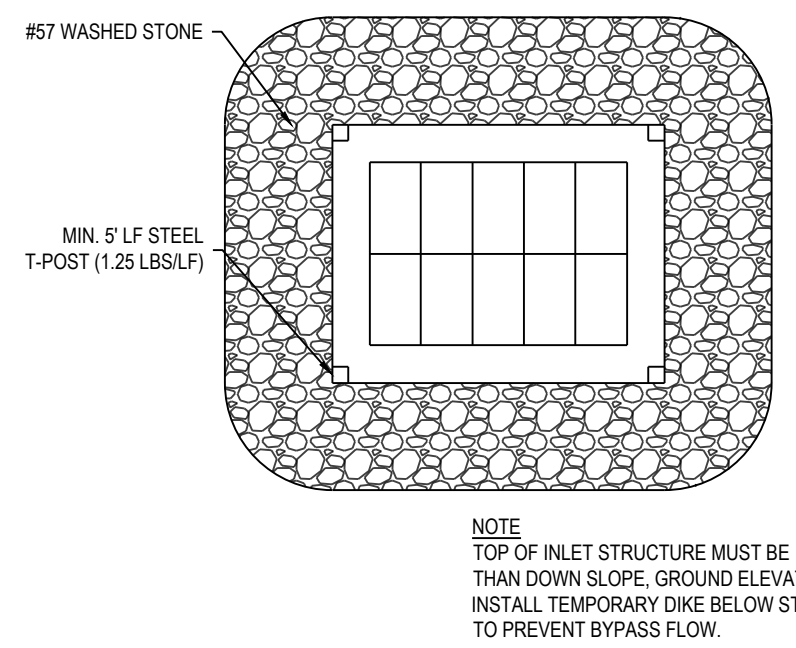
8 STORM DRAIN TRENCH DETAIL  
 (C2.1) N.T.S.



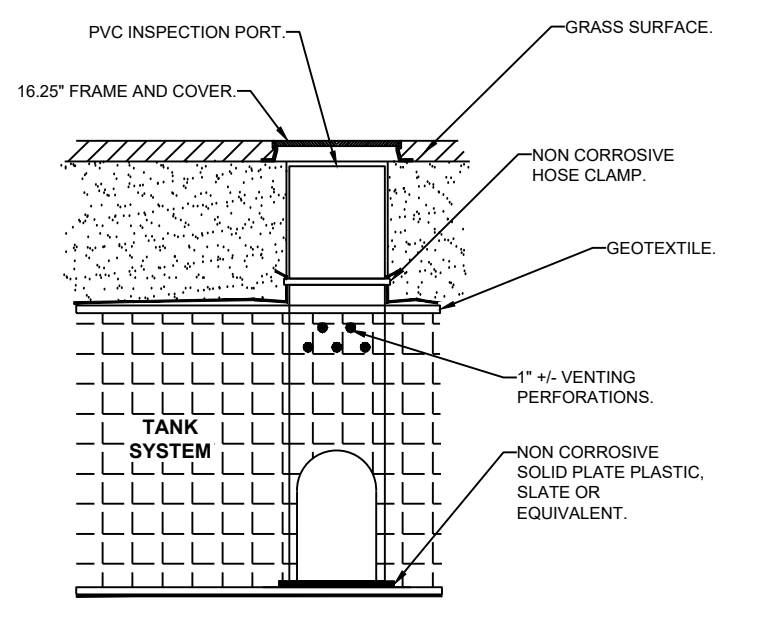
9 UNDERGROUND STORAGE TANK DETAIL  
 (C2.1) N.T.S.



10 INLET PROTECTION DETAIL  
 (C2.1) N.T.S.



11 INSPECTION PORT DETAIL  
 (C2.1) N.T.S.



12 TANK INLET/OUTLET PIPE BOOT CONNECTION DETAIL  
 (C2.1) N.T.S.

REV#	DATE	DESCRIPTION	BY	CHK

TEG PROJECT NO. 2024091

CLIENT PROJECT NO.

PROJECT TITLE  
**COG STALLING STADIUM DRAINAGE IMPROVEMENTS**  
 1055 S ELM STREET  
 GREENVILLE, 27858  
 PITT COUNTY

SHEET NAME  
**CONSTRUCTION DETAILS**

SHEET NO.