



## Orange Water and Sewer Authority

Our community's trusted partner for clean water and environmental protection.

Date: August 8, 2025

Invitation To Bid: East Poplar Avenue Pavement Restoration.

You are invited to submit a bid for the East Poplar Avenue pavement restoration project located in Carrboro, NC. The plans and specifications included with this invitation outline the work to be completed.

Our Construction Crew will be installing a new water main along East Poplar Avenue located in Carrboro NC. We anticipate the work to be complete in September 2025.

The shaded area shown on the plans represents the general restoration area of the project and does not depict the exact overlay location. The trench repair will generally follow the route of the pipe and services.

**Paving Project duration: Substantial completion 30 days from NTP and Final completion at 45 days**

**Performance and Payment bonds required.**

We look forward to receiving a submittal from your company.

Bids are to be submitted by:

**August 21, 2025, by 2:00 PM** bids may be submitted by email to [DBerger@owasa.org](mailto:DBerger@owasa.org) (the time stamp on the email will serve as the confirmed delivery date and time) or delivered to 400 Jones Ferry Road Carrboro, NC 27510. Bids received after these times will not be accepted.

Darren Berger Project Manager

Orange Water and Sewer Authority

Email: [DBerger@owasa.org](mailto:DBerger@owasa.org)

Phone: 919-537-4240



GENERAL INFORMATION:

The project site will consist of a saw-cut, 5-foot-wide trench filled with compacted ABC, which OWASA will complete for the installation of the water main prior to pavement work. According to the details on the engineering drawings, twelve inches of the compacted ABC along the trench must be removed, and the remaining ABC re-compacted before asphalt placement. Pavement milling is required along the sides of the trench and at each end of the project corridor to create a clean seam for transitioning to existing roadways. The work is located in Carrboro, NC and within an NCDOT roadway. As noted on the plans, all work shall conform to the engineering drawing details and be paid under the appropriate line item.

Acknowledgment of Addenda / \_\_\_\_\_

BASE BID:

Item No.	Description	Unit	Unit Price	Estimated Quantity	Bid Amount
1	8" Base Course, Per Detail 1 of page C-1	TON		151	
2	2" Intermediate Course	TON		57	
3	2" Surface Course	TON		55	
4	Carrboro/NCDOT Milling of Asphalt Pavement (Select Areas)	SY		100	
5	Striping	LF		1750	
6	Mobilization/Demobilization	EA		1	

TOTAL BASE BID PRICE for the construction of the Project complete as indicated by the Drawings and Items No. 1 — 6 above. (in words and figures):

\_\_\_\_\_ Dollars

and \_\_\_\_\_ Cents (\$ \_\_\_\_\_ )

Bidder \_\_\_\_\_ (Print)

## MEASUREMENT AND PAYMENT:

Payment for work required by the Drawings shall be based on the pay items described herein. The work associated with each pay item is intended to include all labor and materials necessary for a complete paving installation. While the descriptions provided may not be all inclusive, the overall intent of the project is to deliver a fully completed pavement installation. The following line items will be used for payment of additional pavement work beyond the described scope, if directed by OWASA.

### Item 1 — 8" Base Course, Per Detail 1 of Page C-1 Trench Repair

This unit price bid item shall include furnishing all traffic control, materials, equipment, and labor for removal, disposal, and replacement, if necessary, to provide replacement of removed 12-inches of ABC with 8-inches of base course. Payment for Carrboro/NCDOT trench repair shall be made by the TON of pavement installed per Carrboro/NCDOT trench repair details provided in the Drawings.

### Item 2 — 2" Intermediate Course Asphalt Pavement

This unit price bid item includes furnishing all traffic control, materials, equipment, and labor for placement of 2" of I19.0C-114/lb./Sy/in pavement, where shown on the Engineering Drawings. Payment for the 2" pavement intermediate course shall be made per TON of asphalt placement per the Carrboro/NCDOT repair detail on Engineering Drawing Sheet C-1.

### Item 3 — 2" Surface Course Asphalt Pavement

This unit price bid item includes furnishing all traffic control, materials, equipment, and labor for placement of 2" of SF9.5B pavement, where shown on the Engineering Drawings. Payment for the 2" pavement overlay shall be made per TON of asphalt placement per the Carrboro/NCDOT repair detail on Engineering Drawing Sheet C-1.

### Item 4 — Carrboro/NCDOT Milling of Asphalt Pavement

This unit price bid item pertains only to areas which require pavement milling at seams with existing asphalt roads and includes furnishing all traffic control, materials, equipment, and labor for milling of 2" of asphalt at Mill Butt Joint Tie-In where necessary, where shown on the Drawings. Payment for asphalt pavement milling and replacement shall be made per square yard of milling and asphalt placement per the NCDOT repair detail on Engineering Drawing Sheet C-1.

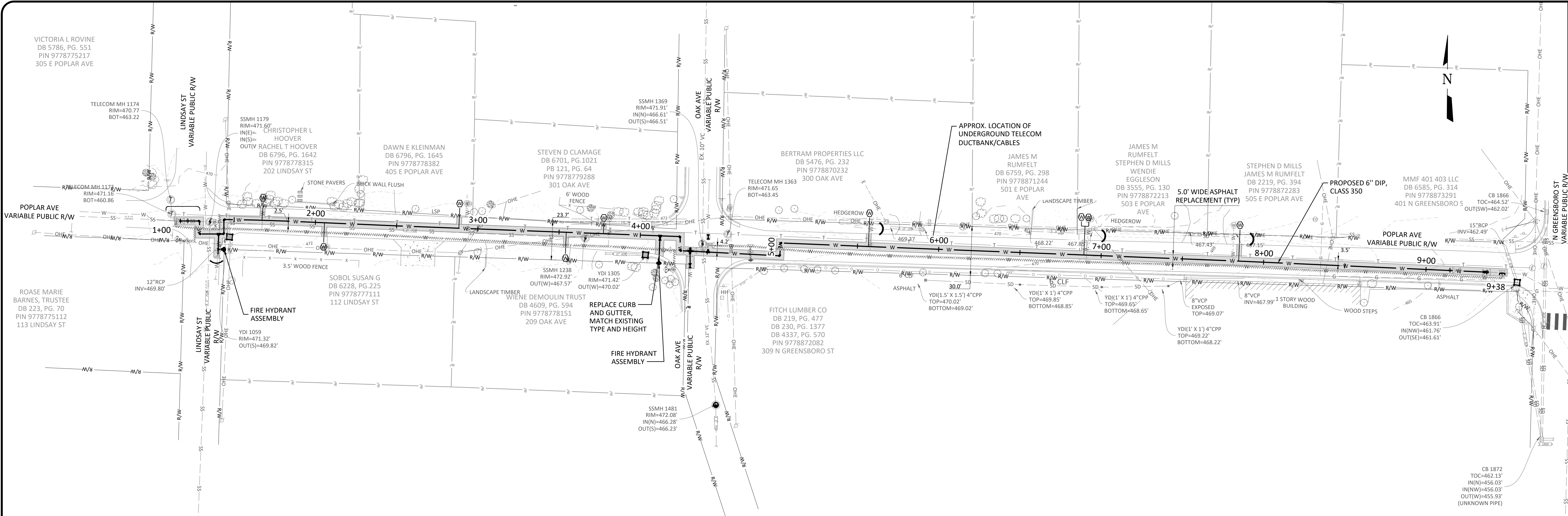
### Item 4 — Striping

This pay item includes replacement in kind of existing yellow solid line and or white edge solid line pavement marking and stop bars per NCDOT Specification 12.02 along the entirety of the roadway. Payment for roadway striping shall be made per linear foot of roadway striping placement.

### Item 5 — Mobilization/Demobilization

This unit price item is for the costs incurred for the Contractor to mobilize equipment to the site and to demobilize from the site once a particular phase (if multiple phases are required by the Owner) of work is complete. Coordinate work status and planned activities with the Owner prior to any mobilization or demobilization.

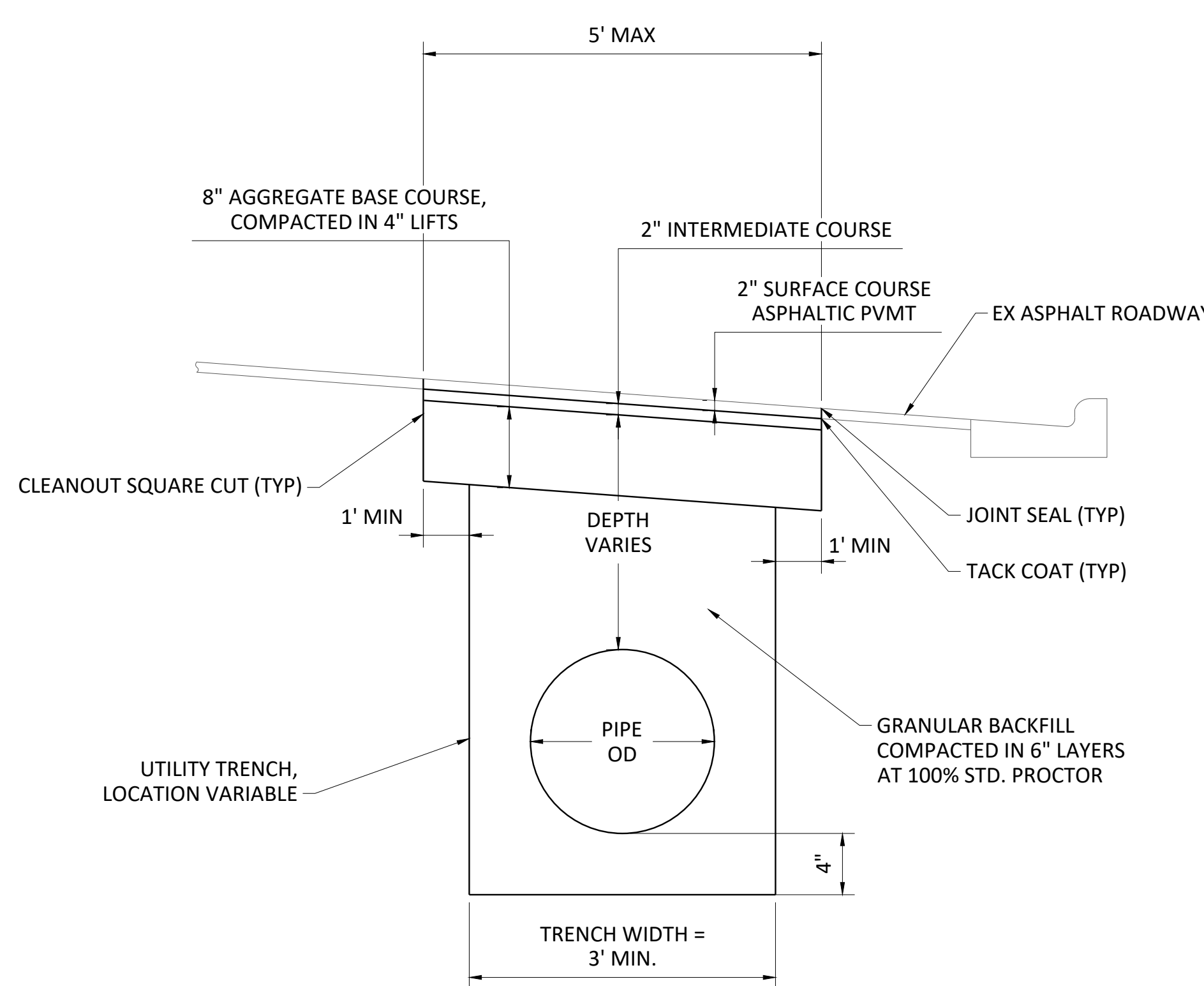
-END OF SECTION-



**NOT FOR CONSTRUCTION**  
 THIS DOCUMENT IS RELEASED FOR THE PURPOSE OF INTERIM REVIEW UNDER THE AUTHORITY OF MEGAN L. JONES P.E., 09/02/23. IT IS NOT TO BE USED FOR CONSTRUCTION, BIDDING OR PERMIT PURPOSES.

**FRESE NICHOLS**  
 1017 Main Campus Drive, Suite 1200  
 Raleigh, North Carolina 27606  
 Phone - (919) 582-5850  
 Web - www.freese.com

ORANGE WATER AND SEWER AUTHORITY  
**E. POPLAR AVENUE WATER MAIN REPLACEMENT**  
 PAVING PLAN

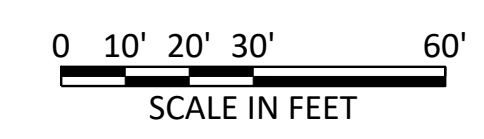


**1**  
**CARRBORO ROAD REPLACEMENT DETAIL**  
 N.T.S.

**LEGEND:**  
 [Shaded Area] LIMITS OF TRENCH PAVEMENT REPLACEMENT

**QUANTITIES:**  
 ASPHALT PAVEMENT REPAIR = 503 SY  
 SURFACE COURSE (ASSUMED 9.5B - 110LB/SY/IN) = 55 TONS  
 INTERMEDIATE COURSE (ASSUMED 119.0C - 114 LB/SY/IN) = 57 TONS  
 AGGREGATE BASE COURSE (ASSUMED 2,700 LB/CY) = 151 TONS

**NOTES:**  
 1. PAVEMENT REPAIR OF UTILITY TRENCH SHALL BE IN ACCORDANCE WITH OWASA STANDARD SPECIFICATIONS SECTION 02275 TRENCHING, BACKFILLING, AND COMPACTION OF UTILITIES.  
 2. REFER TO DETAIL ON THIS SHEET FOR DEPTHS OF ABC, INTERMEDIATE COURSE, AND SURFACE COURSE.



NO.	ISSUE	DATE	BY	DESCRIPTION	FILE NAME
					CV-WTRL-PL-02.dwg

FINAL DRAWING  
 SHEET **C-1**  
 SEQ.