

ELECTRICAL PLAN
MEZZANINE LIGHTING LAYOUT
SCALE: 1/8"=1'-0"

ELECTRICAL LEGEND	
SYMBOL	DESCRIPTION
---	TANDEM WIRING W/FIXTURE
- - - - -	BRANCH CIRCUIT WIRING
—	SWITCH WIRING

ELECTRICAL PLAN
LIGHTING LAYOUT
SCALE: 1/8"=1'-0"

SEAL

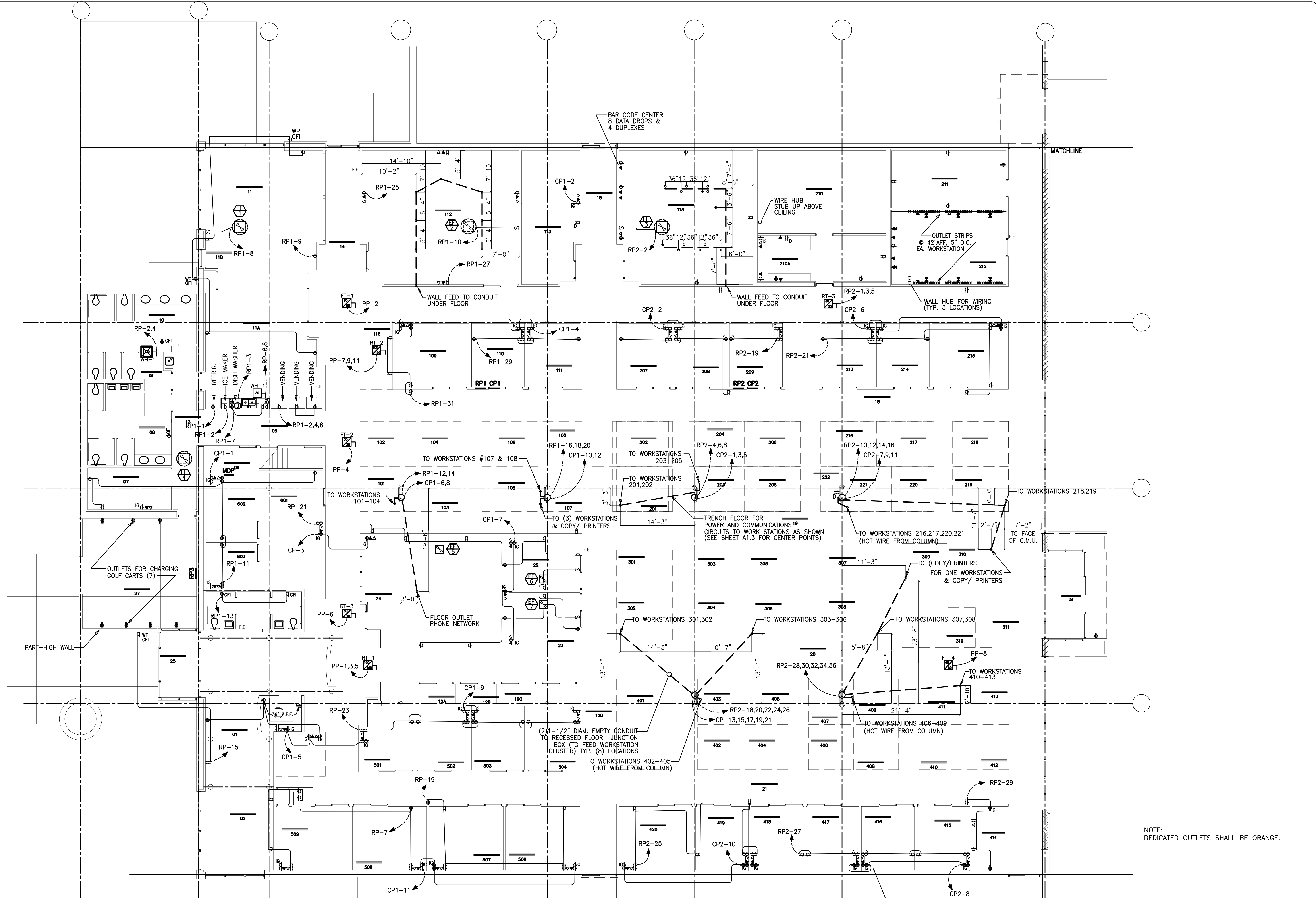
DESIGNED BY:
EN-TECH ENGINEERING
P.O. BOX 11527
GOLDSBORO, NC 27532
TEL: (919) 778-9064
FAX: (919) 778-9069

PREPARED FOR:
J. Michael Dunn, AIA
A R C H I T E C T
POST OFFICE BOX 1045, KENNESAW, NC TEL: (919) 527-6121 FAX: (919) 527-1991

PROJECT NO.	PROJECT MGR.
97038	R. BROWN
DRAWN BY	DATE
C. MELTON	9/23/97
REV/DATE	DESCRIPTION

DRAWING TITLE
ELECTRICAL PLAN
LIGHTING LAYOUT
PROJECT/LOCATION
DIMON INTERNATIONAL, INC. OFFICE RENOVATION
FARMVILLE, NORTH CAROLINA

SCALE
1/8"=1'-0"
SHEET NO.
E1.1
OF 5 REV. Δ



ELECTRICAL PLAN
POWER & RECEPTACLE LAYOUT
SCALE: 1/8"=1'-0"

NOTE:
DEDICATED OUTLETS SHALL BE ORANGE.

SEAL

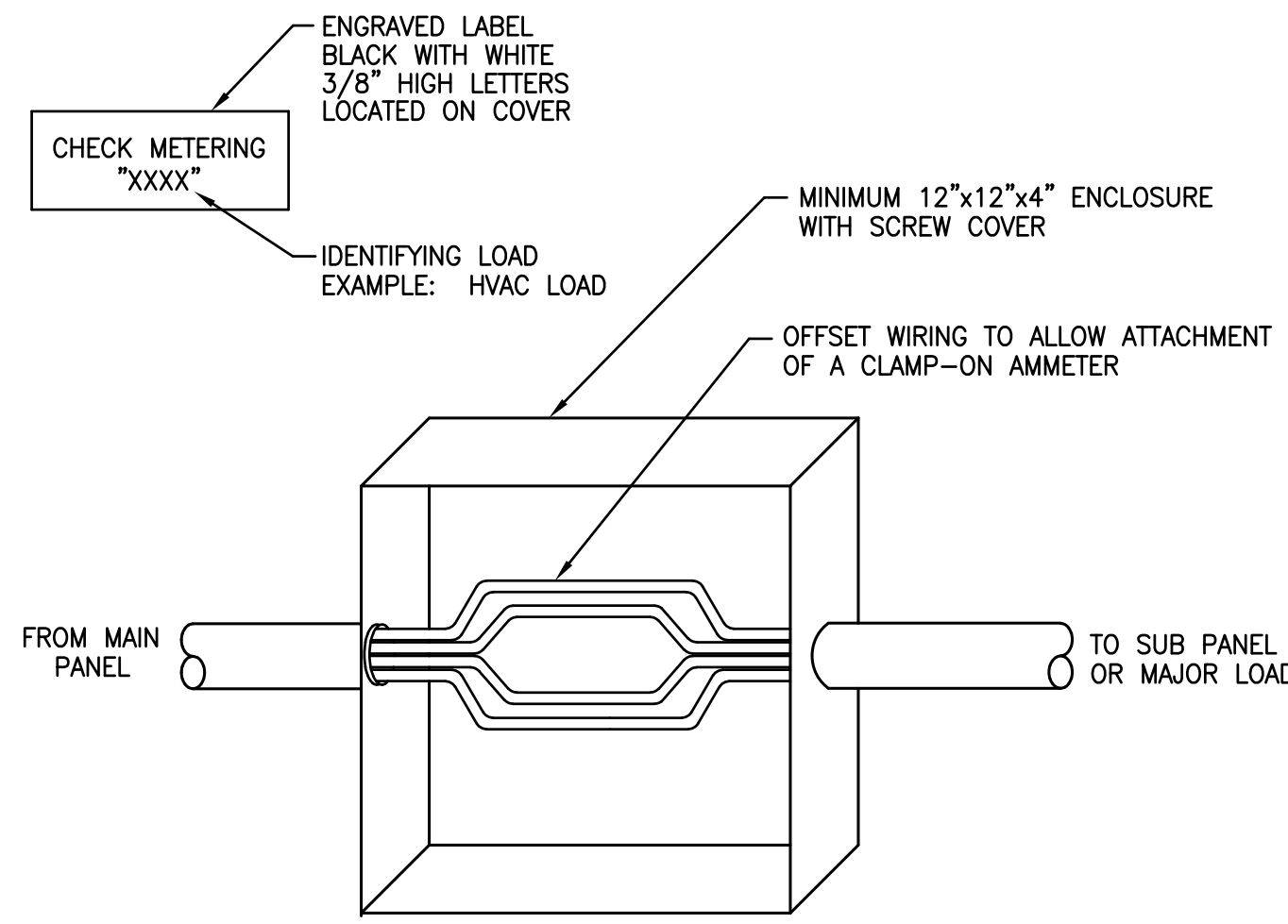
DESIGNED BY:
EN-TECH ENGINEERING
P.O. BOX 11527
GOLDSBORO, NC 27532
TEL: (919) 778-9064
FAX: (919) 778-9069

PREPARED FOR:
J. Michael Dunn, AIA
ARCHITECT
POST OFFICE BOX 1045, KENNESAW, NC TEL: (919) 527-0121 FAX: (919) 527-1091

PROJECT NO.	PROJECT MGR.
97038	R. BROWN
DRAWN BY	DATE
C. MELTON	9/23/97
REV/DATE	DESCRIPTION

DRAWING TITLE
ELECTRICAL PLAN
POWER & RECEPTACLE LAYOUT
PROJECT LOCATION
DIMON INTERNATIONAL, INC. OFFICE RENOVATION
FARMVILLE, NORTH CAROLINA

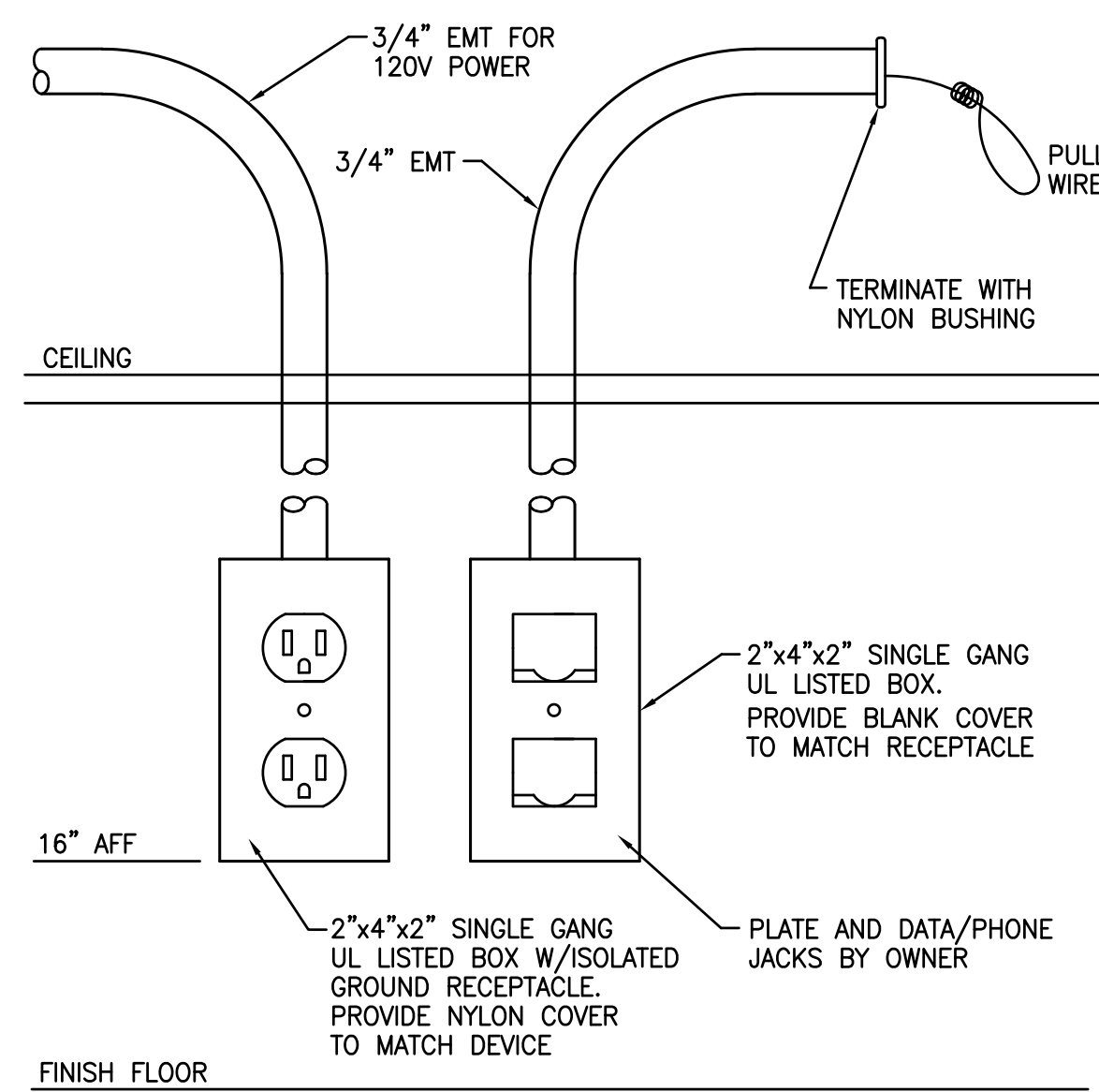
SCALE
1/8"=1'-0"
SHEET NO.
E1.2
OF 5 REV. 0



- NOTES:
1. MOUNT CHECK METERING ENCLOSURE NEAR MAIN PANEL.
 2. PROVIDE ENGRAVED LAMINATED LABEL IDENTIFYING LOAD.
 3. LABEL WIRING INDICATING PHASE, NEUTRAL, & GROUND.

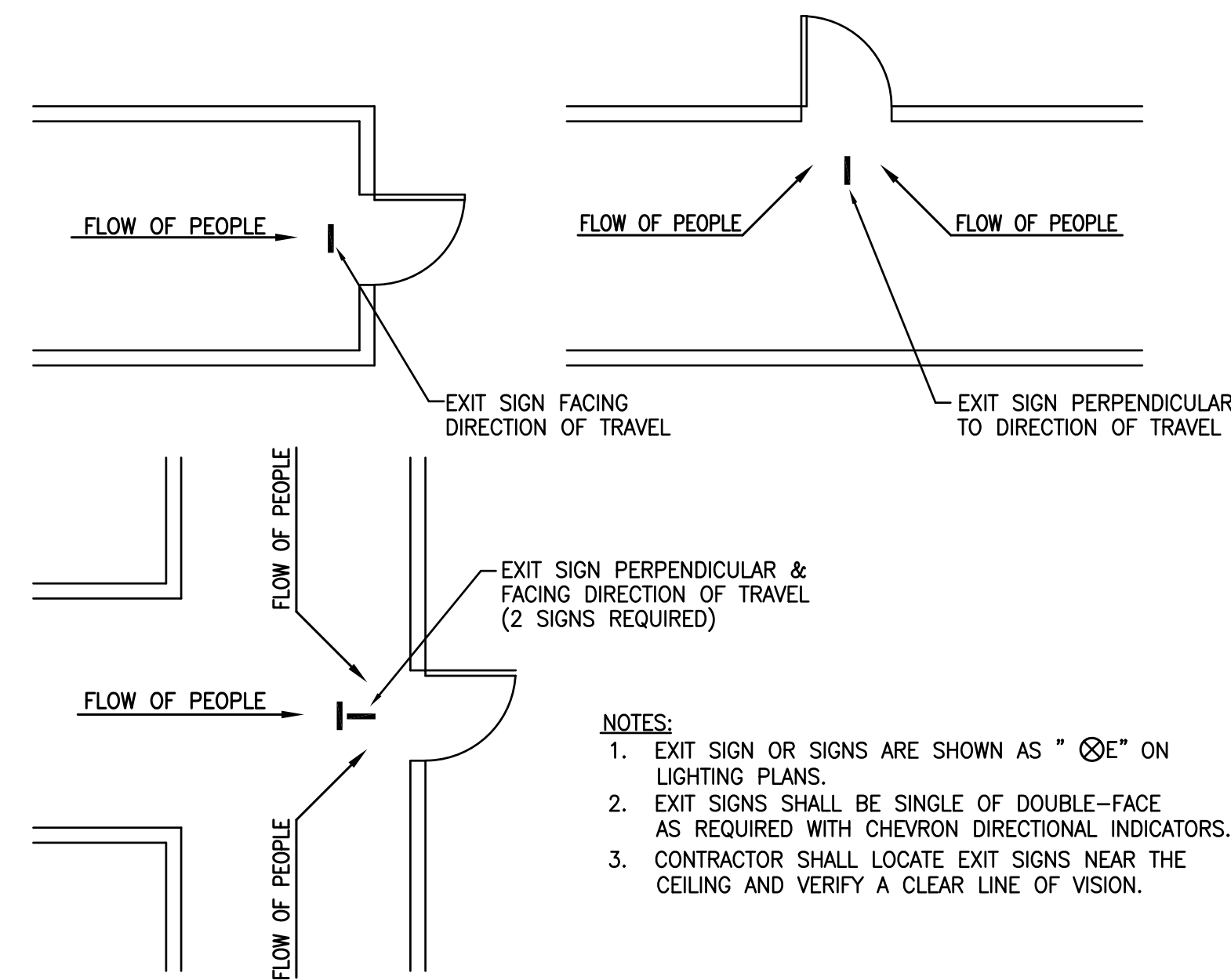
DETAIL NO. 1

CHECK METERING STATION
SCALE: NTS



DETAIL NO. 2

POWER/DATA/PHONE OUTLET
SCALE: NTS



DETAIL NO. 3

LOCATIONS OF EXIT SIGNS
SCALE: NTS

ELECTRICAL NOTES:

1. ELECTRICAL PLANS ARE INTENDED TO PROVIDE INFORMATION FOR INSTALLATION OF A COMPLETE ELECTRICAL SYSTEM. PROVIDE ALL ESSENTIAL LABOR, MATERIALS & DEVICES REQUIRED TO PRODUCE A QUALITY END PRODUCT.
2. DESIGN COORDINATION WITH BUILDING COMPONENTS & OTHER TRADES HAS BEEN PERFORMED. CONTRACTOR SHALL PROVIDE REQUIRED PLANNING, COORDINATING & SEQUENCING OF INSTALLATION OF ELECTRICAL EQUIPMENT & MATERIALS WITH BUILDING COMPONENTS & OTHER TRADES.
3. ALL WORK SHALL COMPLY WITH THE NATIONAL ELECTRICAL CODE (NEC). WORKMANSHIP SHALL MEET OR EXCEED INDUSTRY STANDARDS.
4. ALL WIRING, PANELBOARDS, DEVICES AND OTHER LIKE MATERIALS SHALL BE U.L. LISTED & LABELED. ALL MATERIALS SHALL MEET THE NEC FOR THE INTENDED USE AND INSTALLED IN ACCORDANCE WITH THE NEC.
5. PROTECT ALL NEW MATERIALS FROM THE WEATHER IN STORAGE TRAILERS OR PROVIDE SUITABLE COVERING.
6. PROVIDE THHN/THWN COPPER WIRE. PROVIDE A MINIMUM WIRE SIZE OF #12. ALL WIRE #8 AND LARGER SHALL BE STRANDED.
7. PROVIDE CONDUIT FOR ALL WIRING. MINIMUM CONDUIT SIZE SHALL BE 3/4 INCH TRADE SIZE. ALL CONDUIT ABOVE GRADE SHALL BE METALLIC. PROVIDE EMT WHERE EXPOSED TO POTENTIAL PHYSICAL DAMAGE. CONDUIT BELOW CONCRETE SLABS MAY BE PVC WITH METALLIC ELBOWS WHERE THE CONDUIT PENETRATES THE FLOOR SLAB.
8. PROVIDE 3/4 INCH EMPTY CONDUITS TERMINATING ABOVE THE CEILING FOR ALL TELEPHONE OUTLETS SHOWN.
9. PROVIDE 3/4 INCH EMPTY CONDUITS TERMINATING ABOVE THE CEILING FOR ALL HVAC THERMOSTATS AND EMERGENCY STOP SWITCHES. PROVIDE JUNCTION BOXES MATCHING ORIENTATION OF THERMOSTATS AND STOP SWITCHES PROVIDED BY THE MECHANICAL CONTRACTOR. MOUNT JUNCTION BOXES 60 INCHES A.F.F.
10. PROVIDE PANELBOARDS FOR SERVICE ENTRANCE WHICH ARE SERVICE ENTRANCE RATED. PROVIDE NEMA 3R PANELBOARDS WHERE LOCATED OUTSIDE. PROVIDE NEUTRAL BARS IN ALL PANELBOARDS UNLESS NOTED OTHERWISE. GROUND ALL SERVICE ENTRANCE PANELS IN ACCORDANCE WITH THE NEC.
11. PROVIDE PANEL SCHEDULES IN EACH PANEL INDICATING THE LOAD DESCRIPTION FOR EACH BREAKER. LABEL PANELS ON PANEL FACE WITH PHENOLIC LABELS INDICATING PANEL NUMBER OR LETTER DESIGNATION, VOLTAGE AND PHASE.
12. PROVIDE HEAVY DUTY FUSED AND NON-FUSED DISCONNECT SWITCHES AS INDICATED ON PLANS. DISCONNECTS LOCATED OUTSIDE SHALL BE NEMA-3R. PROVIDE REJECTION CLIPS IN FUSED DISCONNECTS.
13. PROVIDE HEAVY DUTY COMBINATION STARTERS WHERE SHOWN. STARTERS LOCATED OUTSIDE SHALL BE NEMA-3R. PROVIDE HAND-OFF-AUTO (H-O-A) SWITCHES WHERE AUTOMATIC CONTROL IS REQUIRED. PROVIDE PUSH BUTTON ON/OFF WHERE MANUAL OPERATION ONLY IS REQUIRED. TOGGLE TYPE MANUAL MOTOR STARTERS MAY BE SUPPLIED ON FRACTIONAL HORSEPOWER MOTORS.
14. PROVIDE HORSEPOWER RATED STARTERS AND DISCONNECTS WHEN CONNECTED TO MOTORS. STARTERS SHALL BE PROVIDED WITH OVERLOAD HEATERS SIZED TO MATCH MOTOR RATINGS.
15. PROVIDE LIGHTING AS SCHEDULED IN THE FIXTURE SCHEDULE OR OTHERWISE NOTED ON PLANS. LIGHTING INSTALLED IN SUSPENDED CEILINGS SHALL BE SUPPORTED INDEPENDENTLY OF THE CEILING GRID SYSTEM.
16. PROVIDE EMERGENCY AND EXIT LIGHTS AS SHOWN ON PLANS. POWER SHALL BE PROVIDED FROM LIGHTING CIRCUITS ON THE UNSWITCHED LEG OF THE CIRCUIT SUCH THAT POWER TO THE EMERGENCY AND EXIT LIGHTS IS NOT DISCONNECTED WHEN NORMAL LIGHTING IS OFF.
17. RECEPTACLES SHALL BE 20 AMP, 120V, EQUAL TO HUBBELL CR20I, UNLESS NOTED OTHERWISE. MOUNT RECEPTACLES 16 INCHES A.F.F. UNLESS NOTED OTHERWISE.
18. RECEPTACLES ABOVE COUNTER TOPS, IN TOILETS AND IN KITCHENS SHALL BE GROUND FAULT RECEPTACLES, EQUAL TO HUBBELL GF5352I.
19. RECEPTACLES INSTALLED OUTSIDE SHALL BE GROUND FAULT AND WEATHERPROOF, EQUAL TO HUBBELL GF5352I WITH WP26 COVER.
20. WALL SWITCHES SHALL BE SINGLE POLE, 20 AMP, 120/277V, EQUAL TO HUBBELL CS120I.
21. WALL SWITCHES CONTROLLING LIGHTS AND TOILET EXHAUST FAN SHALL BE DOUBLE POLE, SINGLE THROW, 20 AMP, 120/277V, EQUAL TO HUBBELL CSB220I.
22. PROVIDE STANDARD SIZE WALL PLATES FOR ALL DEVICES AND BLANK WALL PLATES FOR JUNCTION BOXES. WALL PLATES SHALL BE HIGH IMPACT, SMOOTH NYLON, COLOR TO MATCH DEVICE.
23. PROVIDE 120V POWER TO ALL DUCT SMOKE DETECTORS PROVIDED BY THE MECHANICAL CONTRACTOR. COORDINATE LOCATIONS WITH MECHANICAL CONTRACTOR.
24. ALL ELECTRICAL COMPONENTS AND FIXTURES SHALL BE CLEANED & POLISHED. PAINTED SURFACES SHALL BE TOUCHED UP TO MATCH FACTORY APPLIED FINISHES.
25. WHERE LIGHTING IS USED DURING CONSTRUCTION, PROVIDE & INSTALL NEW LAMPS BEFORE TURNING BUILDING OVER TO OWNER.
26. GUARANTEE ALL EQUIPMENT, MATERIALS AND INSTALLATION FREE OF DEFECTS FOR A PERIOD OF 1 YEAR AFTER DATE OF ACCEPTANCE.

LIGHT FIXTURE SCHEDULE											
MARK	DESCRIPTION	MANF.	MODEL NUMBER	LAMP			BALLAST		FIXTURE INPUT WATTS	VOLTS	REMARKS
				TYPE	NO.	WATTS	TYPE	NO.			
A	2x4 PARABOLIC LAY-IN	LITHONIA	2PM3 GB 332 24LD LST	T8	3	32	ELECTRONIC	1	95	120	TANDEM WIRED FOR DUAL SWITCHING W/(1) 4 LAMP BALLAST AND (1) 2 LAMP BALLAST
A1	2x4 PARABOLIC LAY-IN	LITHONIA	2PM3 GB 332 24LD LST	T8	3	32	ELECTRONIC	1	95	120	
B	2x4 PARABOLIC LAY-IN	LITHONIA	2PM3 GB 332 24LD 1/3GEB	T8	3	32	ELECTRONIC	1	98	120	
C	2x4 PARABOLIC LAY-IN	LITHONIA	2PM3 GB 232 12LD GEB	T8	2	32	ELECTRONIC	1	65	120	
D	LAY-IN TROFFER	LITHONIA	2SP G 332 A12 LST	T8	3	32	ELECTRONIC	1	95	120	TANDEM WIRED FOR DUAL SWITCHING W/(1) 4 LAMP BALLAST AND (1) 2 LAMP BALLAST
D1	LAY-IN TROFFER	LITHONIA	2SP G 332 A12 LST	T8	3	32	ELECTRONIC	1	95	120	
F	LAY-IN TROFFER	LITHONIA	2SP G 332 A12 1/3GEB	T8	3	32	ELECTRONIC	1	95	120	
G	LAY-IN TROFFER	LITHONIA	2SP G 232 A12 GEB	T8	2	32	ELECTRONIC	1	65	120	
H	2x2 PARABOLIC LAY-IN	LITHONIA	2PM3 GB 3BIAx 9LD GEB	BIAx	3	32	ELECTRONIC	1	95	120	
K	DOWNLIGHT	LITHONIA	AFV 32TRT 6AR LD 120 GEB	PL	1	32	ELECTRONIC	1	35	120	
L	DOWNLIGHT	LITHONIA	AF 2/32TRT 10AR LD 120 GEB	PL	2	32	ELECTRONIC	1	65	120	
M	DOWNLIGHT	LITHONIA	RP6 AC LD	PAR38	1	100	-	-	100	120	
⊗E	EXIT LIGHT	LITHONIA	LE S W 1-2 R 120 ELN	LED	1	3	-	-	3	120	(SEE NOTE NO. 1)
⚡	EMERGENCY LIGHT	LITHONIA	6ELM2 N LD	PAR	2	7	-	-	20	120	BATTERY BACKUP (NI CAD)

- NOTES:
1. PROVIDE EXIT LIGHTS WITH SINGLE OR DOUBLE-FACE AS REQUIRED, CHEVRON DIRECTIONAL INDICATORS, TOP MOUNTING BRACKETS & NICKEL CADMIUM BATTERY BACKUP.

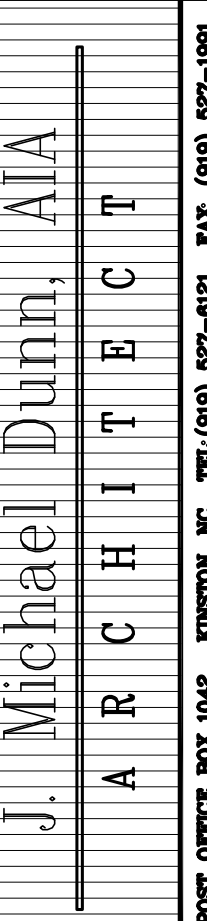
ELECTRICAL LEGEND		
SYM.	DESCRIPTION	REF. MODEL NO.
⊕	JUNCTION BOX	-
□	NON-FUSED DISCONNECT	-
⊞	FUSED DISCONNECT	-
⊞	COMBINATION STARTER	-
\$	SWITCH	HUBBELL CS120I
\$DPST	DOUBLE POLE SINGLE THROW SWITCH	HUBBELL CSB220I
\$SPDT	SINGLE POLE DOUBLE THROW SWITCH	HUBBELL HBL 13851
\$D	DIMMER SWITCH	HUBBELL AR151 1500 WATT MAX
\$P	PILOT LIGHT SWITCH	HUBBELL HBL 1221 PL
\$3	3 WAY SWITCH	HUBBELL CS320I
\$4	4 WAY SWITCH	HUBBELL CSB420I
\$M	MANUAL MOTOR STARTER SWITCH	SIEMENS SMF W/OVERLOADS
\$T	15-MINUTE TIMER SWITCH W/HOLD	P&S 97115
⊕	RECEPTACLE	HUBBELL CR20I
⊕IG	ISOLATED GROUND RECEPTACLE	HUBBELL IG5362
⊕GFI	GROUND FAULT RECEPTACLE	HUBBELL GF5352I
⊕WP	GROUND FAULT, WEATHERPROOF RECEPT.	HUBBELL GF5352I W/WP26 COVER
⊕S	SPECIAL RECEPTACLE	-
⊕CLG	CEILING RECEPTACLE	-
⊕FLR	FLOOR RECEPTACLE	-
⊕	DOUBLE DUPLEX RECEPTACLE	HUBBELL CR201
⊕IG	DOUBLE DUPLEX RECEPT. IG/DEDICATED	-
⊕	CIRCUIT IDENTIFIER	-
⊕	HORN AND STROBE	-
⊕	STROBE	-
⊕	FIRE ALARM PULL STATION	-
⊕	SMOKE DETECTOR	-
⊕	TELEPHONE OUTLET	-
⊕	DATA OUTLET	-
⊕	DATA/PHONE OUTLET	-

DESIGNED BY: EN-TECH ENGINEERING



TEL: (919) 778-9084
P.O. BOX 11927
GOLDSBORO, NC 27532
FAX: (919) 778-9089

PREPARED FOR: J. Michael Dunn, AIA



POST OFFICE BOX 1046, KENNESAW, NC TEL: (919) 587-0321 FAX: (919) 587-1091

PROJECT NO. 97038

PROJECT MGR. R. BROWN

DRAWN BY C. MELTON

DATE 9/23/97

REV/DATE DESCRIPTION

DRAWING TITLE: ELECTRICAL DETAILS, SCHEDULE

LEGEND & NOTES

PROJECT/LOCATION: DIMON INTERNATIONAL, INC. OFFICE RENOVATION FARMVILLE, NORTH CAROLINA

SCALE: NONE

SHEET NO.

E2.1

OF 5

REV. 0

PANELBOARD SCHEDULE										
PANEL LP1			SERVICE ENTRANCE RATED				225 AMP			
208/120V, 3 ϕ , 4 WIRE (10,000)										
LOAD SERVED	WIRE SIZE	LOAD	CKT NO.	PHASE	CKT NO.	LOAD	WIRE SIZE	LOAD SERVED	CKT NO.	LOAD
		A B C		A B C		A B C				
LIGHTS - OFFICE	2#12 & 1#12G	9	1	20	2	8	2#12 & 1#12G	LIGHTS - HALL		
LIGHTS - OFFICE	2#12 & 1#12G	7	3	20	4	14	2#12 & 1#12G	LIGHTS - HALL		
LIGHTS - OFFICE	2#12 & 1#12G	9	5	20	6	7	2#12 & 1#12G	LIGHTS - HALL		
LIGHTS - BATH	2#12 & 1#12G	7	7	20	8	14	2#12 & 1#12G	LIGHTS - OFFICE		
LIGHTS - ENTRANCE	2#12 & 1#12G	6	9	20	10	10	2#12 & 1#12G	LIGHTS - OFFICE		
LIGHTS - FOYER	2#12 & 1#12G	10	11	20	12	10	2#12 & 1#12G	LIGHTS - OFFICE		
LIGHTS - OFFICE	2#12 & 1#12G	9	13	20	14	10	2#12 & 1#12G	LIGHTS - OFFICE		
LIGHTS - OFFICE	2#12 & 1#12G	9	15	20	16	14	2#12 & 1#12G	LIGHTS - OFFICE		
LIGHTS - OFFICE	2#12 & 1#12G	8	17	20	18	15	2#12 & 1#12G	LIGHTS - OFFICE		
LIGHTS - OFFICE	2#12 & 1#12G	8	19	20	20	14	2#12 & 1#12G	LIGHTS - OFFICE		
LIGHTS - OFFICE	2#12 & 1#12G	8	21	20	22	10	2#12 & 1#12G	LIGHTS - OFFICE		
LIGHTS - OFFICE	2#12 & 1#12G	14	23	20	24	11	2#12 & 1#12G	LIGHTS - OFFICE		
			25	20	26	11	2#12 & 1#12G	LIGHTS - OFFICE		
			27		28					
			29		30					
			31		32					
			33		34					
			35		36					
			37		38					
			39		40					
			41		42					

PANELBOARD SCHEDULE										
PANEL CP1			SERVICE ENTRANCE RATED				100 AMP			
208/120V, 3 ϕ , 4 WIRE										
LOAD SERVED	WIRE SIZE	LOAD	CKT NO.	PHASE	CKT NO.	LOAD	WIRE SIZE	LOAD SERVED	CKT NO.	LOAD
		A B C		A B C		A B C				
RECEPT. IG	2#12 & 2#12G	6	1	20	2	6	2#12 & 2#12G	RECEPT. IG		
RECEPT. IG	2#12 & 2#12G	9	3	20	4	9	2#12 & 2#12G	RECEPT. IG		
RECEPT. IG	2#12 & 2#12G	9	5	20	6	6	2#12 & 2#12G	RECEPT. IG W.S.		
RECEPT. IG	2#12 & 2#12G	9	7	20	8	6	2#12 & 2#12G	RECEPT. IG W.S.		
RECEPT. IG	2#12 & 2#12G	9	9	20	10	6	2#12 & 2#12G	RECEPT. IG W.S.		
RECEPT. IG	2#12 & 2#12G	9	11	20	12	6	2#12 & 2#12G	RECEPT. IG W.S.		
			13		14					
			15		16					
			17		18					
			19		20					
			21		22					
			23		24					
							4#10 & 1#12G	TV SS		

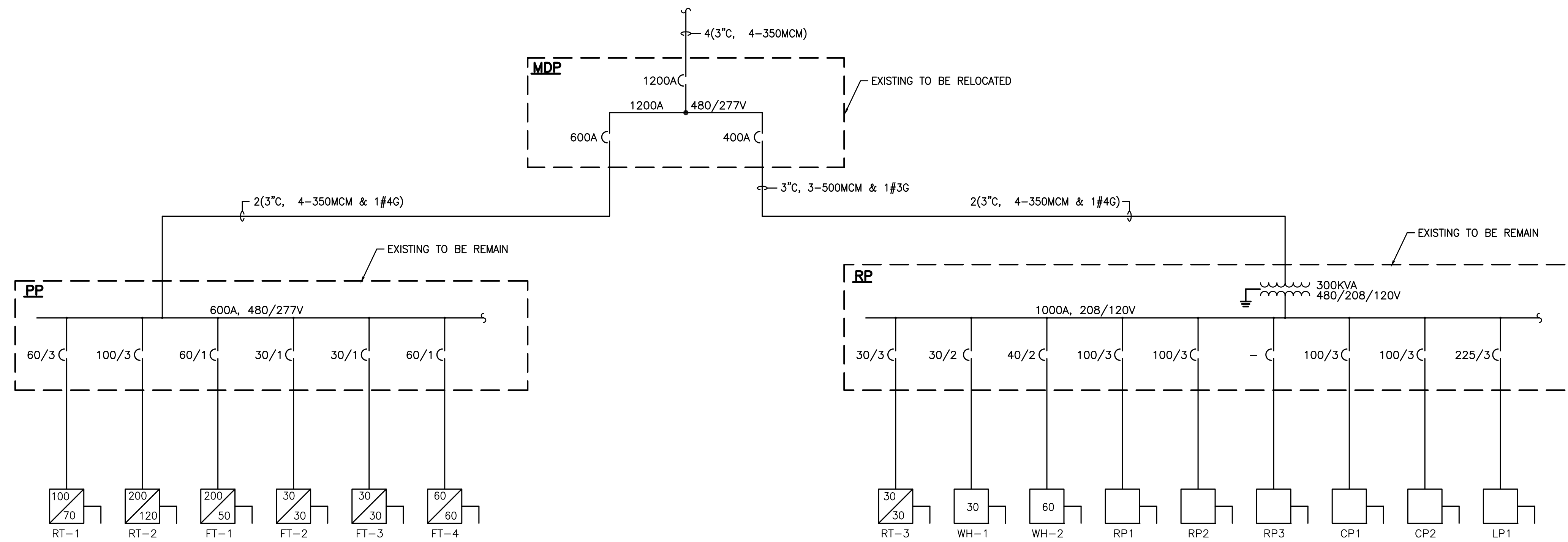
PANELBOARD SCHEDULE										
PANEL CP2			SERVICE ENTRANCE RATED				100 AMP			
208/120V, 3 ϕ , 4 WIRE										
LOAD SERVED	WIRE SIZE	LOAD	CKT NO.	PHASE	CKT NO.	LOAD	WIRE SIZE	LOAD SERVED	CKT NO.	LOAD
		A B C		A B C		A B C				
RECEPT. IG W.S.	2#12 & 2#12G	6	1	20	2	6	2#12 & 2#12G	RECEPT. IG		
RECEPT. IG W.S.	2#12 & 2#12G	6	3	20	4	6	2#12 & 2#12G	RECEPT. IG		
RECEPT. IG W.S.	2#12 & 2#12G	6	5	20	6	6	2#12 & 2#12G	RECEPT. IG		
RECEPT. IG W.S.	2#12 & 2#12G	6	7	20	8	9	2#12 & 2#12G	RECEPT. IG		
RECEPT. IG W.S.	2#12 & 2#12G	6	9	20	10	9	2#12 & 2#12G	RECEPT. IG		
RECEPT. IG W.S.	2#12 & 2#12G	6	11	20	12					
RECEPT. IG W.S.	2#12 & 2#12G	6	13	20	14					
RECEPT. IG W.S.	2#12 & 2#12G	6	15	20	16					
RECEPT. IG W.S.	2#12 & 2#12G	6	17	20	18					
RECEPT. IG W.S.	2#12 & 2#12G	6	19	20	20					
RECEPT. IG W.S.	2#12 & 2#12G	6	21	20	22					
RECEPT. IG W.S.	2#12 & 2#12G	6	23	20	24					
							4#10 & 1#12G	TV SS		

PANELBOARD SCHEDULE										
PANEL RP (EXISTING)			SERVICE ENTRANCE RATED				1000 AMP			
208/120V, 3 ϕ , 4 WIRE										
LOAD SERVED	WIRE SIZE	LOAD	CKT NO.	PHASE	CKT NO.	LOAD	WIRE SIZE	LOAD SERVED	CKT NO.	LOAD
		A B C		A B C		A B C				
RT-3	3#10 & 1#12G	16	3	30	2	22	2#10 & 1#12G	WH-1		
		16	5	100	4	22				
		16	7	100	6	36	2#6 & 1#10G	WH-2		
RP1	4#3 & 1#8G	67	9	100	8	36				
		75	11	100	10	27				
		69	13	100	12	27	4#3 & 1#8G	CP1		
RP2	4#3 & 1#8G	92	15	100	14	27				
		90	17	60	16	39				
		76	19	225	18	39	4#3 & 1#8G	CP2		
RP3	-	-	21	225	20	39				
		-	23	225	22	76				
			25		24	78	4#4/0 & 1#4G	LP1		
			27		26	84				
			29		28					
			31		30					
			33		32					
			35		34					
			37		36					
			39		38					
			41		40					
					42					

PANELBOARD SCHEDULE										
PANEL RP1			SERVICE ENTRANCE RATED				100 AMP			
208/120V, 3 ϕ , 4 WIRE (10,000)										
LOAD SERVED	WIRE SIZE	LOAD	CKT NO.	PHASE	CKT NO.	LOAD	WIRE SIZE	LOAD SERVED	CKT NO.	LOAD
		A B C		A B C		A B C				
REFRIGERATOR	2#12 & 1#12G	13	1	20	2	5	2#12 & 1#12G	VENDING MACHINE		
ICE-MAKER	2#12 & 1#12G	5	3	20	4	5	2#12 & 1#12G	VENDING MACHINE		
DISHWASHER	2#12 & 1#12G	12	5	20	6	5	2#12 & 1#12G	VENDING MACHINE		
KITCHEN	2#12 & 1#12G	6	7	20	8	1	2#12 & 1#12G	EF-1		
RECEPTACLES	2#12 & 1#12G	11	9	20	10	1	2#12 & 1#12G	EF-2		
RECEPTACLES	2#12 & 1#12G	14	11	20	12	6	2#12 & 1#12G	WORK STATION		
RECEPTACLE-BATH	2#12 & 1#12G	3	13	20	14	6	2#12 & 1#12G	WORK STATION		
RECEPTACLES	2#12 & 1#12G	14	15	20	16	6	2#12 & 1#12G	WORK STATION		
RECEPTACLES	2#12 & 1#12G	14	17	20	18	6	2#12 & 1#12G	WORK STATION		
RECEPTACLES	2#12 & 1#12G	11	19	20	20	6	2#12 & 1#12G	WORK STATION		
RECEPTACLES	2#12 & 1#12G	12	21	20	22					
RECEPTACLES	2#12 & 1#12G	15	23	20	24					
RECEPTACLES	2#12 & 1#12G	12	25	20	26					
RECEPTACLES	2#12 & 1#12G	15	27	20	28					
RECEPTACLES	2#12 & 1#12G	9	29	20	30					
RECEPTACLES	2#12 & 1#12G	9	31	20	32					
			33		34					
			35		36					
			37		38					
			39		40					
			41		42					

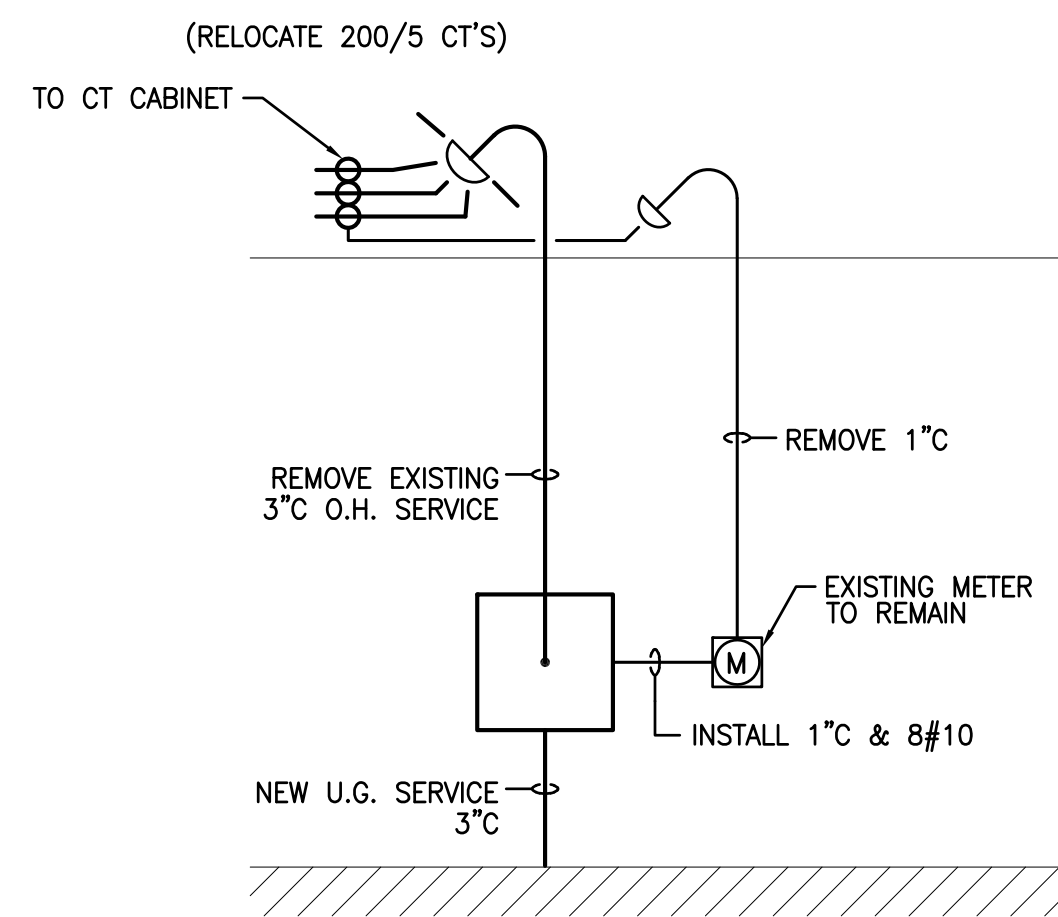
PANELBOARD SCHEDULE										
PANEL RP2			SERVICE ENTRANCE RATED				100 AMP			
208/120V, 3 ϕ , 4 WIRE (10,000)										
LOAD SERVED	WIRE SIZE	LOAD	CKT NO.	PHASE	CKT NO.	LOAD	WIRE SIZE	LOAD SERVED	CKT NO.	LOAD
		A B C		A B C		A B C				
RECEPTACLES	2#12 & 1#12G	15	1	20	2	1	2#12 & 1#12G	EF-3		
RECEPTACLES	2#12 & 1#12G	12	3	20	4	6	2#12 & 1#12G	WORK STATION		
RECEPTACLES	2#12 & 1#12G	15	5	20	6	6	2#12 & 1#12G	WORK STATION		
OUTLET STRIP	4#12 & 1#12G	6	7	20	8	6	2#12 & 1#12G	WORK STATION		
OUTLET STRIP	4#12 & 1#12G	6	9	20	10	6	2#12 & 1#12G	WORK STATION		
OUTLET STRIP	4#12 & 1#12G	8	11	20	12	6	2#12 & 1#12G	WORK STATION		
OUTLET STRIP	4#12 & 1#12G	6	13	20	14	6	2#12 & 1#12G	WORK STATION		
OUTLET STRIP	4#12 & 1#12G	6	15	20	16	6	2#12 & 1#12G	WORK STATION		
OUTLET STRIP	4#12 & 1#12G	8	17	20	18	6	2#12 & 1#12G	WORK STATION		
RECEPTACLES	2#12 & 1#12G	15	19	20	20	6	2#12 & 1#12G	WORK STATION		
RECEPTACLES	2#12 & 1#12G	15	21	20	22	6	2#12 & 1#12G	WORK STATION		
RECEPTACLES	2#12 & 1#12G	3	23	20	24	6	2#12 & 1#12G	WORK STATION		
RECEPTACLES	2#12 & 1#12G	14	25	20	26	6	2#12 & 1#12G	WORK STATION		
RECEPTACLES	2#12 & 1#12G	15	27	20	28	6	2#12 & 1#12G	WORK STATION		
RECEPTACLES	2#12 & 1#12G	6	29	20	30	6	2#12 & 1#12G	WORK STATION		
			31		32	6	2#12 & 1#12G	WORK STATION		
			33		34	6	2#12 & 1#12G	WORK STATION		
			35		36	6	2#12 & 1#12G	WORK STATION		
			37		38					
			39		40					
			41		42					

PANELBOARD SCHEDULE										
PANEL RP3			SERVICE ENTRANCE RATED				AMP			
BATTERY CHARGING FOR CARTS / V, ϕ , WIRE										
LOAD SERVED	WIRE SIZE	LOAD	CKT NO.	PHASE	CKT NO.	LOAD	WIRE SIZE	LOAD SERVED	CKT NO.	LOAD
		A B C		A B C		A B C				
			1		2					
			3		4					
			5		6					
			7		8					
			9		10					
			11		12					
			13		14					
			15		16					
			17		18					
			19		20					
			21		22					
			23		24					
			25		26					
			27		28					
			29		30					
			31		32					
			33		34					
			35		36					
			37		38					
			39		40					
			41		42					



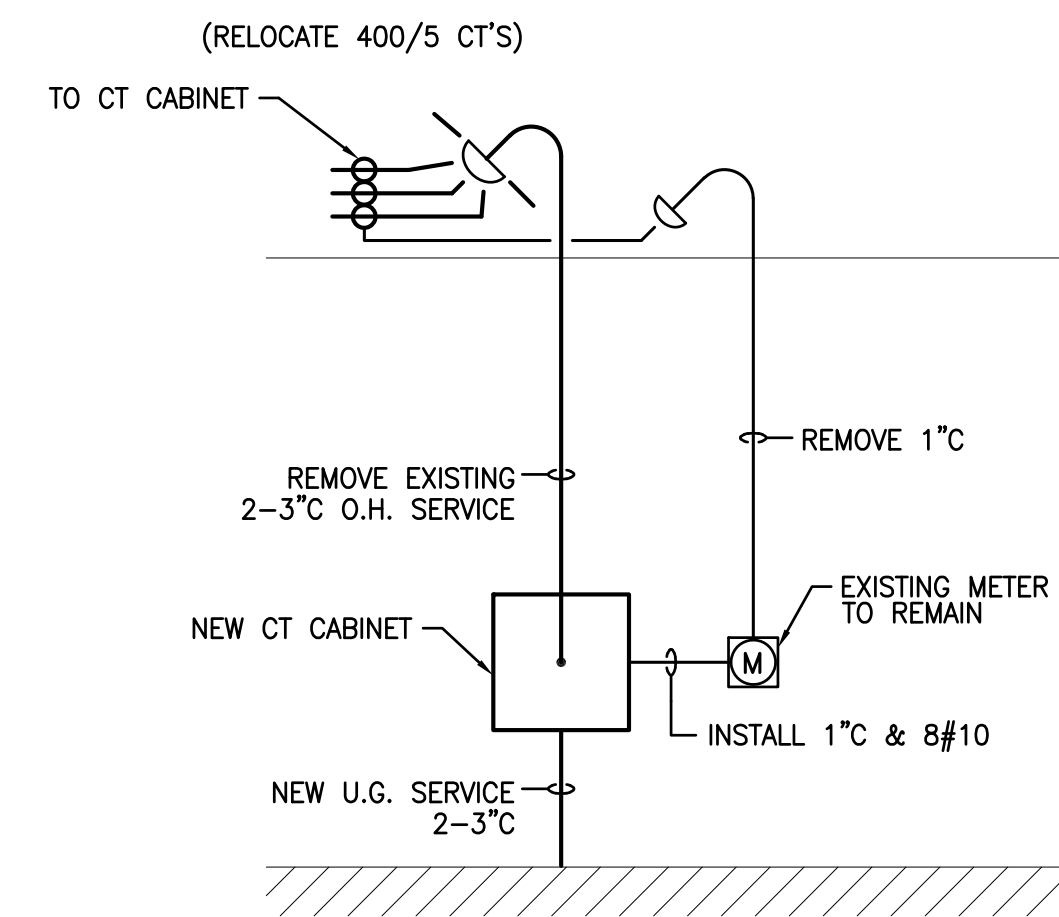
RISER DIAGRAM

DIMON INTERNATIONAL PHASE A
SCALE: NONE



RISER DIAGRAM

PRESENT OVERHEAD SERVICE (FAMILY DOLLAR)
SCALE: NONE



RISER DIAGRAM

PRESENT OVERHEAD SERVICE (DIMON)
SCALE: NONE

SEAL

DESIGNED BY:
EN-TECH ENGINEERING
P.O. BOX 11927
GOLDSBORO, NC 27532
TEL: (919) 778-9064
FAX: (919) 778-9069

PREPARED FOR:
J. Michael Dunn, AIA
ARCHITECT
POST OFFICE BOX 1046, KINSTON, NC TEL: (919) 527-0121 FAX: (919) 527-1091

PROJECT NO. 97038	PROJECT MGR. R. BROWN
DRAWN BY C. MELTON	DATE 9/23/97
REV/DATE	DESCRIPTION

DRAWING TITLE
**ELECTRICAL RISER DIAGRAMS
& LOAD SUMMARY**

PROJECT/LOCATION
DIMON INTERNATIONAL, INC. OFFICE RENOVATION
FARMVILLE, NORTH CAROLINA

SCALE
NONE

SHEET NO.

E4.1

OF 5 REV. 0