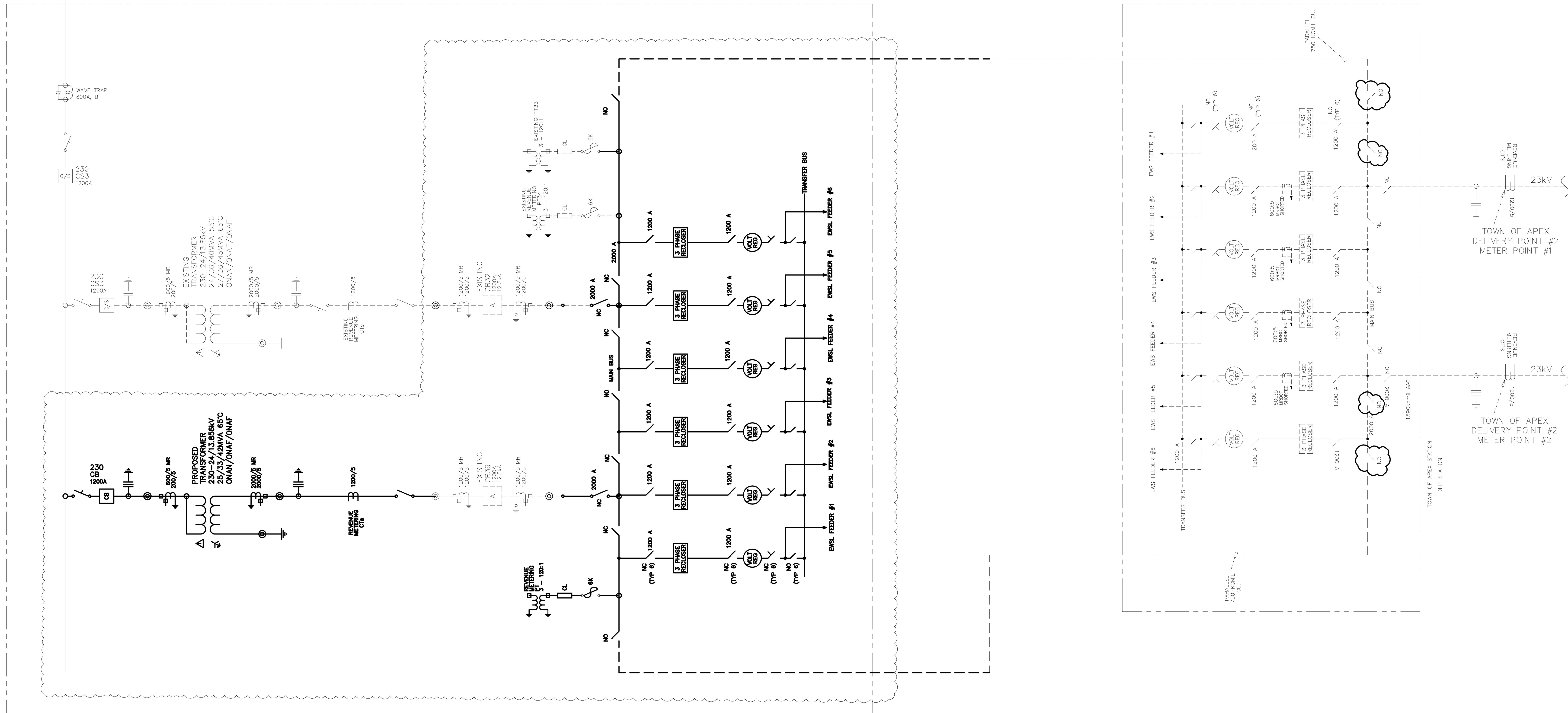


TOWN OF APEX
DELIVERY POINT #3

TOWN OF APEX
EAST WILLIAMS STREET
230KV SUBSTATION
"EWS LOWER"

TOWN OF APEX
EAST WILLIAMS STREET
23KV SWITCHING STATION
"EWS UPPER"



NOTES:

- EXISTING DISTRIBUTION CIRCUITS EWS #1 & EWS #6 ARE TO BE FED FROM EW UPPER. THE CONDUCTORS PREVIOUSLY FEEDING THESE TWO CIRCUITS ARE TO REMAIN AS TIES BETWEEN THE UPPER AND LOWER STATIONS.
- THE NUMBER OF FEEDERS IS TBD.
- APPROXIMATELY 5 MW OF LOAD FROM E.W. UPPER IS TO BE SWITCHED TO E.W. LOWER IN THE FIELD.

LEGEND:
EXISTING - - - - -
NEW - - - - -

No.	DATE	REVISION

PRELIMINARY

TOWN OF APEX
APEX, NORTH CAROLINA
EAST WILLIAMS ST. SUBSTATION
UPGRADE SINGLE-LINE DIAGRAM

DRAWN BY:	JOB NO.:	SCALE:	N.T.S.
CHECKED BY:	CAD FILE:	DATE:	18/JUN/2025
APPROVED BY:	DATE:	SHEET NO.	1 OF 1