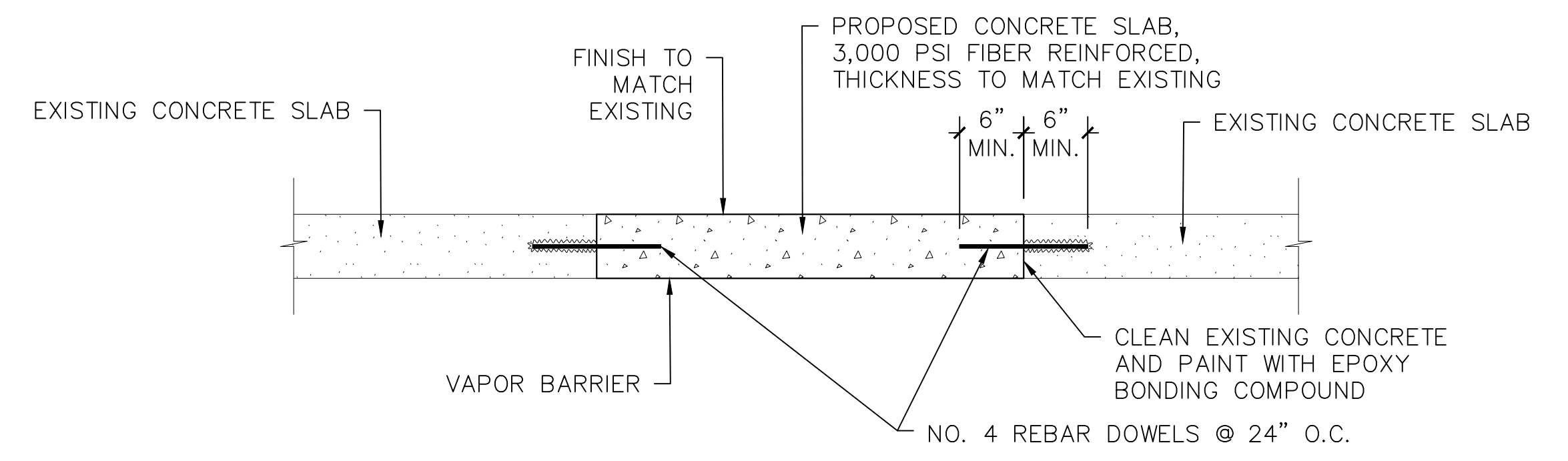
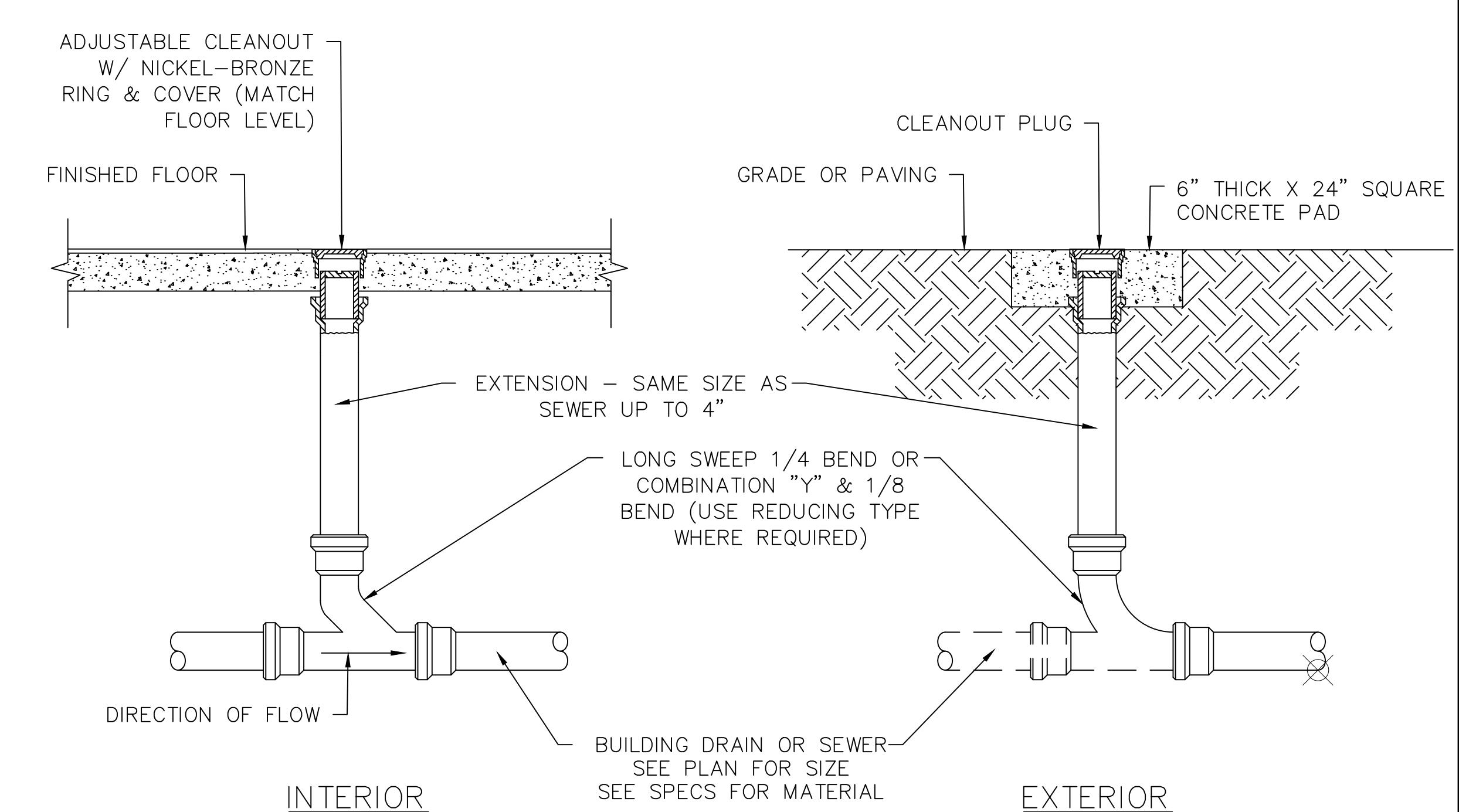


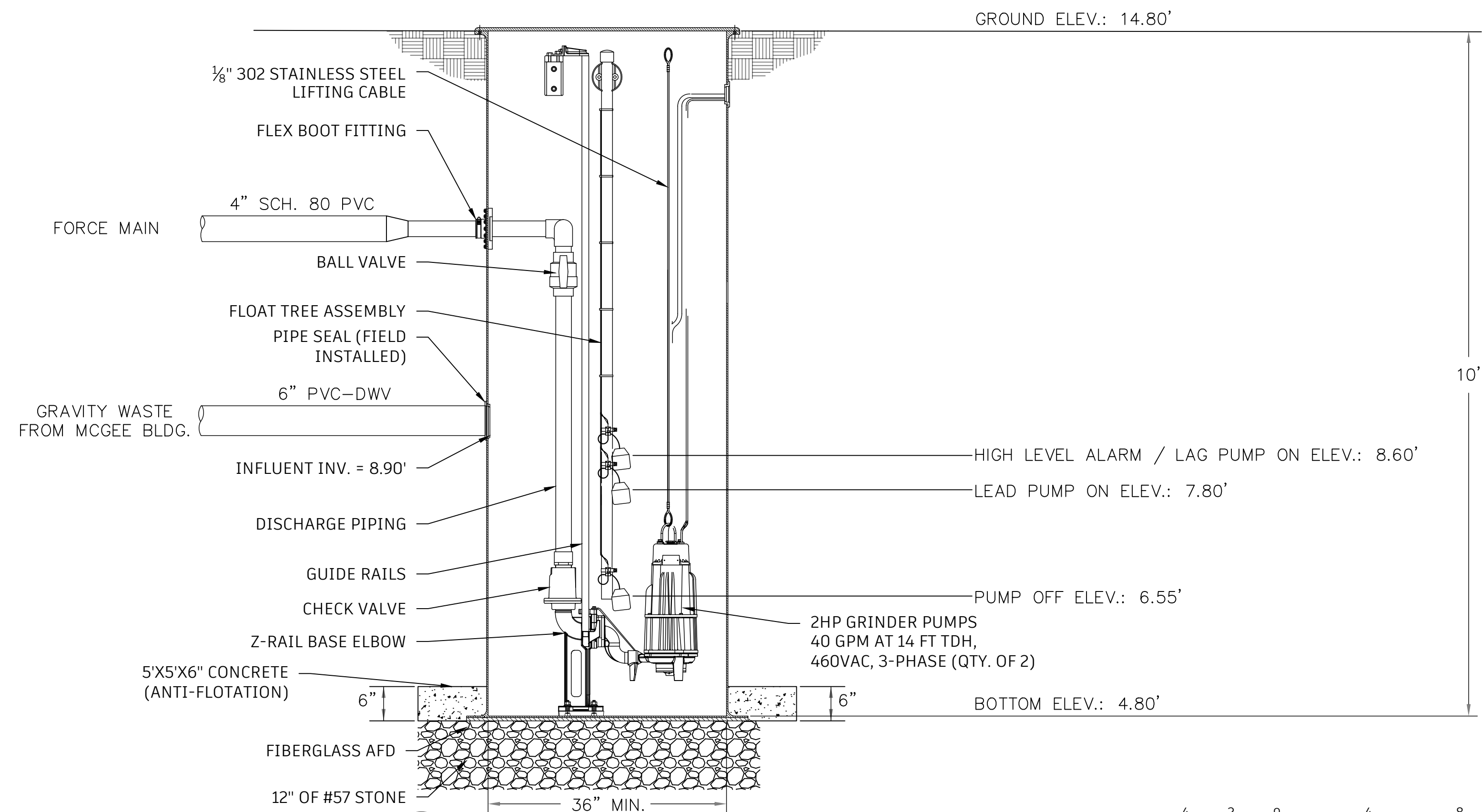
1
P2
NEW PUMP STATION PLUMBING PLAN
SCALE: 1/4"=1'-0"



2
P2
MECHANICAL ROOM CONCRETE PATCH DETAIL
SCALE: NONE



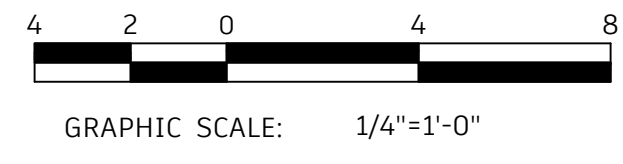
3
P2
CLEANOUT DETAIL
SCALE: NONE



2
P2
DUPLEX PUMP STATION DETAIL
SCALE: 3/4\"/>

NEW PUMP STATION PLUMBING PLAN NOTES:

- EXISTING GRADE BEAMS, APPROXIMATELY 24" DEEP (TYP.).
- NEW PACKAGED GRINDER PUMP STATION. SEE SHEET P3 FOR DETAILS.
- CONNECT TO EXISTING BUILDING SANITARY WASTE DRAIN.
- CONNECT TO EX. 4" FORCE MAIN.
- AREA CONTAINING EX. UNDERGROUND ELECTRICAL, FIBER OPTIC, & HYDRONIC PIPING. DO NOT DIG IN THIS AREA.
- BACKFILL & REPLACE CONCRETE SLAB THAT WAS REMOVED, SEE DETAIL 2 ON THIS SHEET.
- BACKFILL & REPLACE SIDEWALK THAT WAS REMOVED.
- PROPOSED DISCONNECT SWITCH. SEE ELECTRICAL PLAN & SPECIFICATIONS.
- PROPOSED PUMP CONTROL PANEL, SEE ELECTRICAL PLAN & SPECIFICATIONS.
- PROPOSED CELLULAR DIALER, SEE ELECTRICAL PLAN & SPECIFICATIONS.



PROJECT NO.: PM3191-003
DRAWING NO.: 002

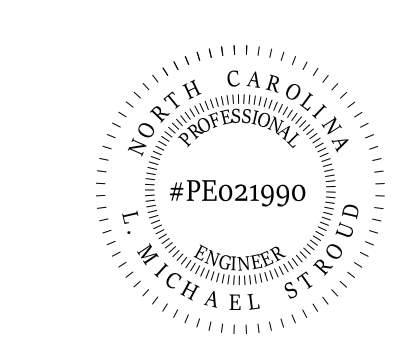
REVISIONS			
BY	NO.	DATE	DESCRIPTION

PUMP STATION PLUMBING PLAN
CARTERET COMMUNITY COLLEGE
MCGEE BUILDING
PUMP STATION RELOCATION
MOREHEAD CITY CARTERET COUNTY NORTH CAROLINA

OWNER: CARTERET COMMUNITY COLLEGE
ADDRESS: 3505 ARENDELL STREET
MOREHEAD CITY, NC 28557
PHONE:

DESIGNED: LMS DATE: 11/21/2025
DRAWN: LMS SCALE: AS NOTED
APPROVED: LMS SHEET P2 OF 2

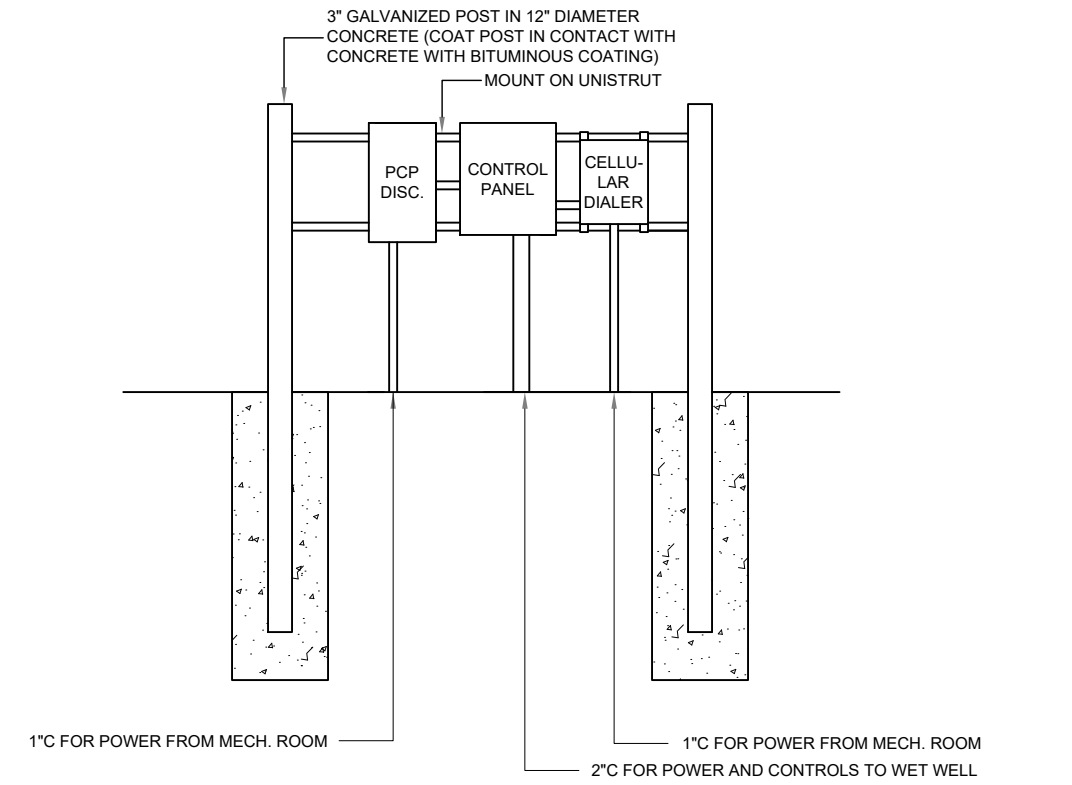
STROUD ENGINEERING, P.A.
422 HIGHWAY 24
MOREHEAD CITY, NC 28557
(252) 247-7479 LICENSE NO. C-05647



Signed by: *L. Michael Stroud* 11/21/2025
L. MICHAEL STROUD, PE

ELECTRICAL ABBREVIATIONS:

- AF AMP FUSE
- AFF ABOVE FINISHED FLOOR
- AFG ABOVE FINISHED GRADE
- AHU AIR-HANDLER UNIT
- AIC AMPERE INTERRUPTING CAPACITY
- AT AMP TRIP
- ATS AUTOMATIC TRANSFER SWITCH
- AWG AMERICAN WIRE GAUGE
- BLDG BUILDING
- CU CONDENSING UNIT
- DISC DISCONNECT
- E.C. ELECTRICAL CONTRACTOR
- ECB ENCLOSED CIRCUIT BREAKER
- EHH ELECTRIC HAND HOLE
- EMT ELECTRICAL METALLIC TUBING
- G GROUND
- GFCI GROUND FAULT CURRENT INTERRUPT
- GRC GALVANIZED RIGID CONDUIT
- HP HORSEPOWER
- HVAC HEATING, VENTILATION, AIR CONDITIONING
- IG ISOLATED GROUND
- KVA KILOVOLT AMPERE
- KW KILOWATT
- MCA MINIMUM CIRCUIT AMPACITY
- MCB MAIN CIRCUIT BREAKER
- MDP MAIN DISTRIBUTION PANEL
- MIN MINIMUM
- MLO MAIN LUG ONLY
- MOCP MAXIMUM OVERCURRENT PROTECTION
- MSB MAIN SWITCHBOARD
- N NEUTRAL
- NEC NATIONAL ELECTRIC CODE (NFPA 70)
- NFPA NATIONAL FIRE PROTECTION AGENCY
- NIC NOT IN CONTRACT
- NL NIGHTLIGHT
- Ø PHASE
- P POLE
- PB PULL BOX
- PVC POLYVINYL CHLORIDE
- RCPT RECEPTACLE
- SCCR SHORT CIRCUIT CURRENT RATING
- SPEC SPECIFICATIONS
- SQ SQUARE
- TVSS TRANSIENT VOLTAGE SURGE SUPPRESSION
- TYP TYPICAL
- UON UNLESS OTHERWISE NOTED
- V VOLTS
- VIF VERIFY IN FIELD
- W WATTS
- WP WEATHERPROOF
- XFMR TRANSFORMER



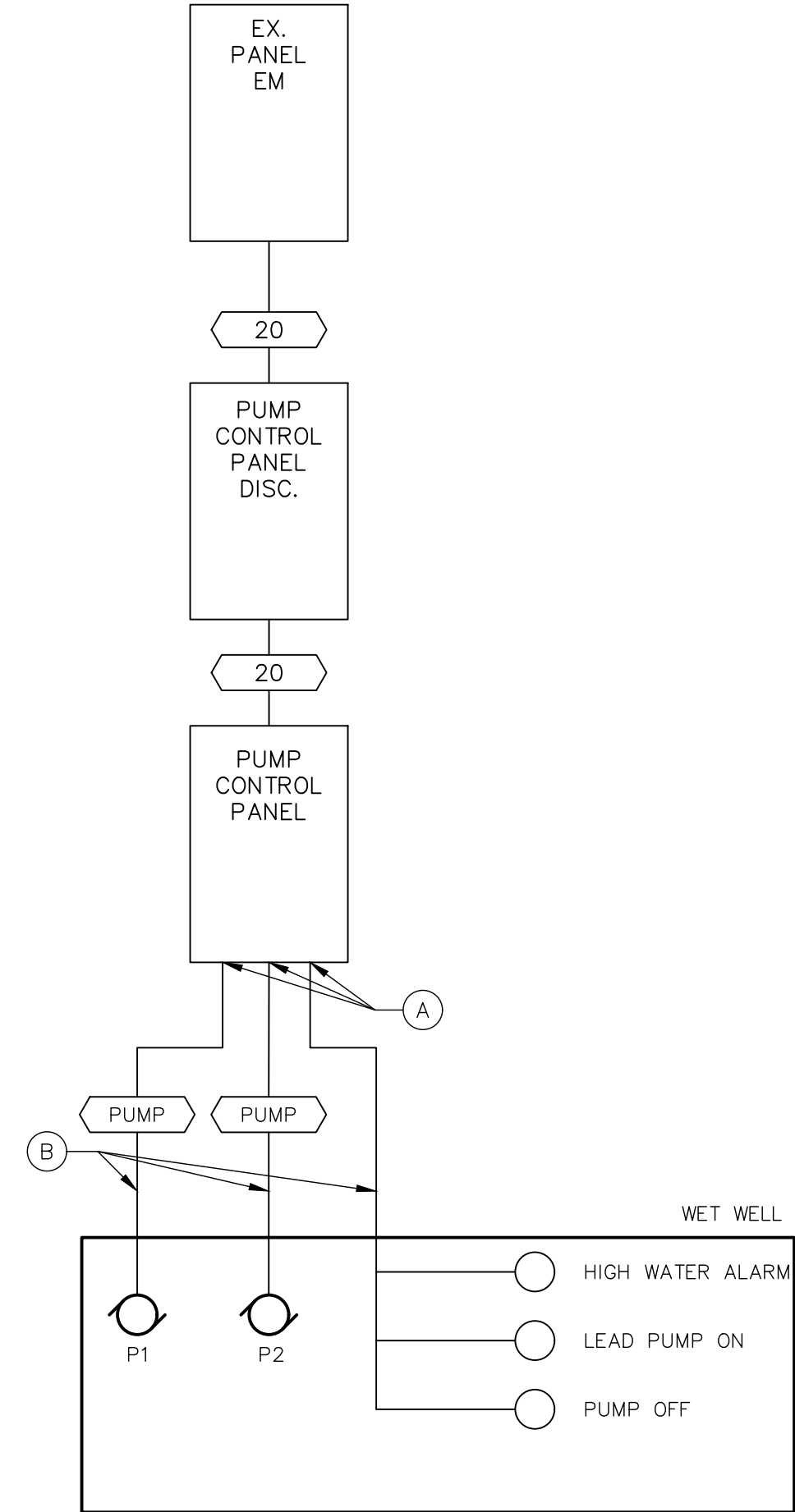
3 E1 CONTROL PANEL MOUNTING DETAIL
SCALE: NONE

FEEDER SCHEDULE

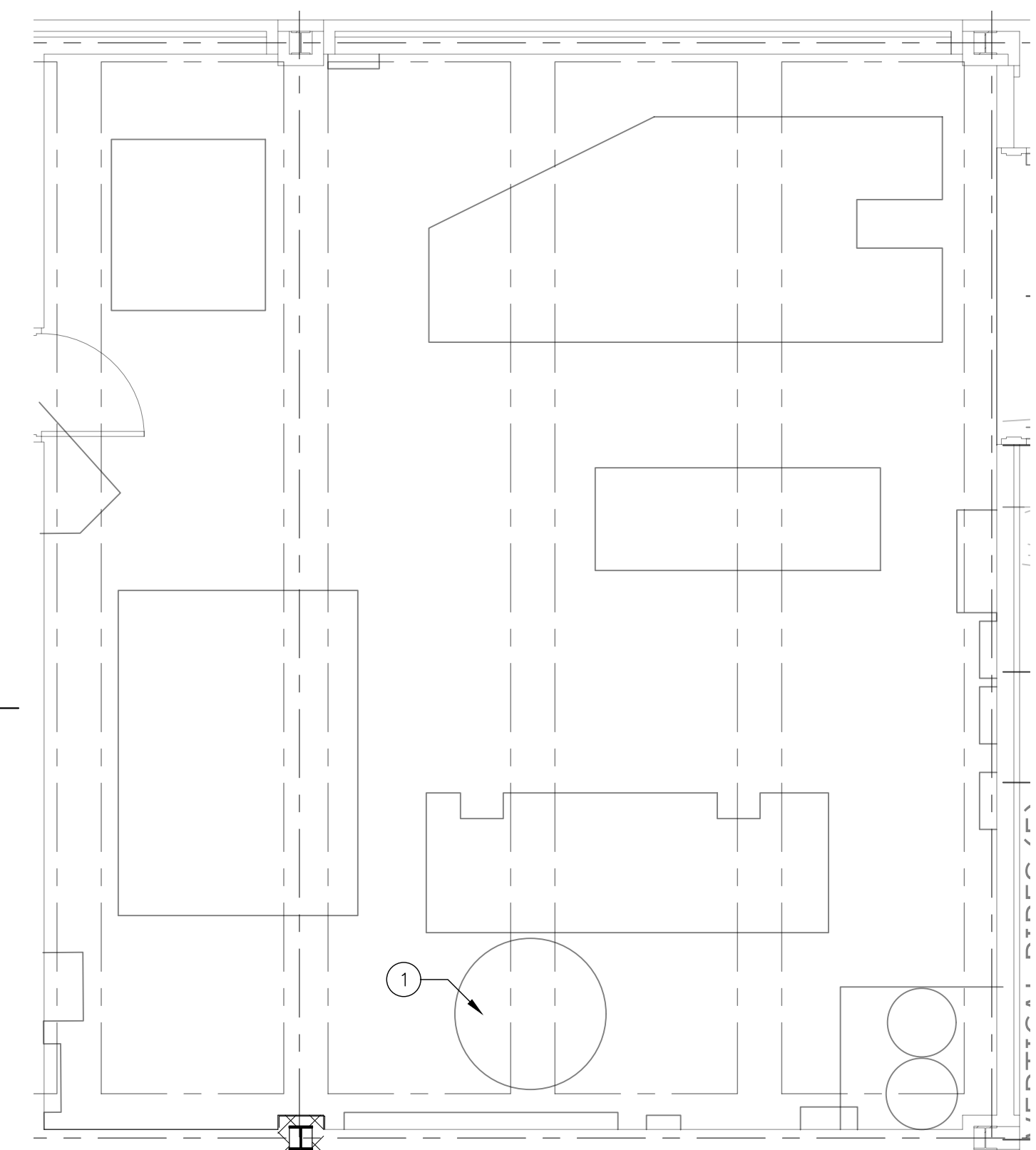
ID	FEEDER AMPS	CONDUIT AND FEEDER
20	20	1" C, 3#12, #12G

EC TO PROVIDE 2" CONDUIT AND INSTALLATION OF POWER CABLE TO PUMPS. POWER CABLE PROVIDED WITH PUMP.
SIZING METHOD: COPPER, 60°C #12 THROUGH #1, 75°C 1/0 AND ABOVE

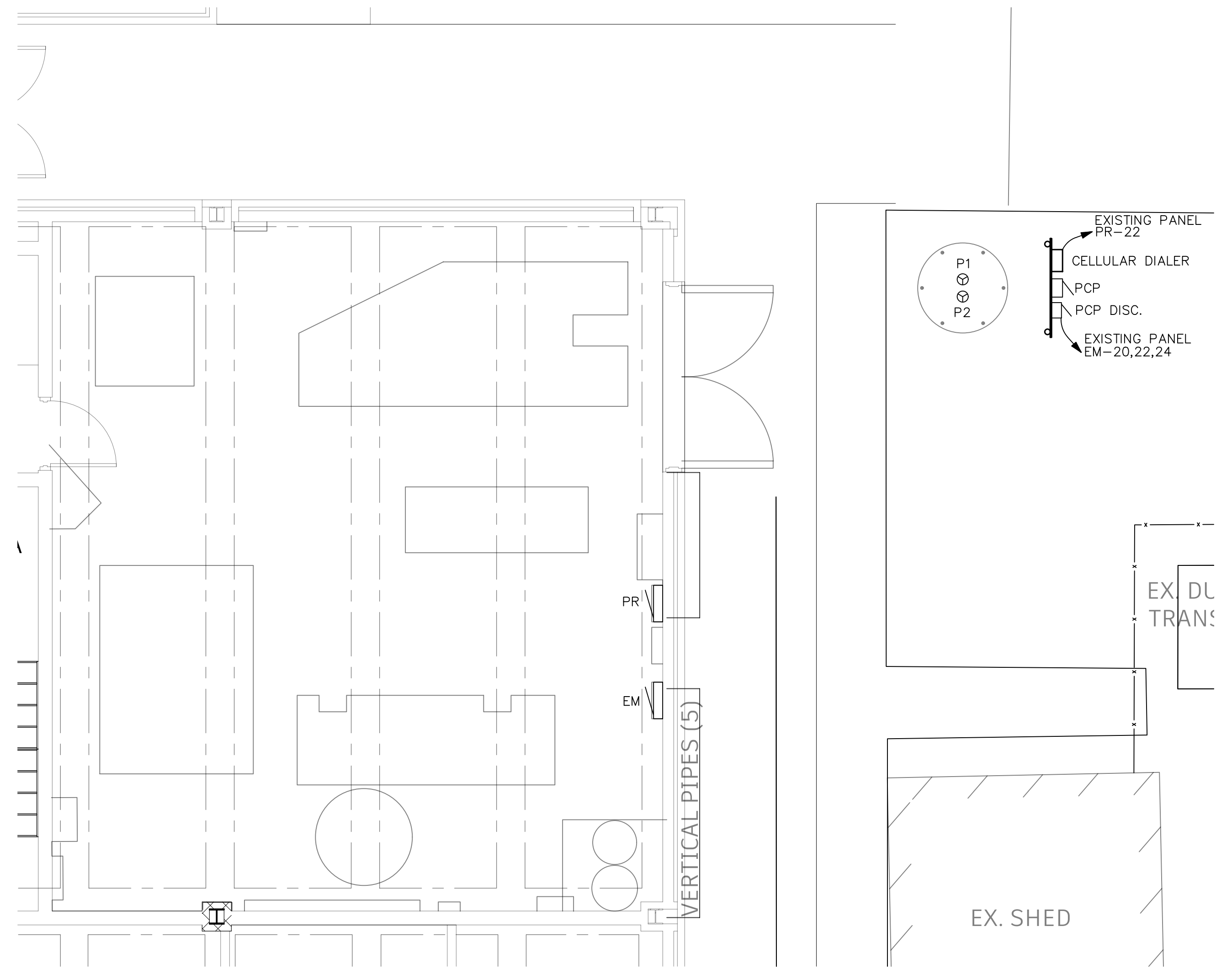
- ELECTRICAL ONE-LINE PLAN NOTES:**
- A. PROVIDE DUCT SEAL FOR ALL CONDUITS ENTERING PANEL.
 - B. ALL CONDUITS ROUTED TO WET WELL SHALL SLOPE TOWARD WET WELL.



4 E1 ELECTRICAL ONE-LINE DIAGRAM
SCALE: NONE



1 E1 ELECTRICAL DEMOLITION PLAN
SCALE: 1/8"=1'-0"



2 E1 PUMP STATION ELECTRICAL PLAN
SCALE: 1/8"=1'-0"

- ELECTRICAL DEMOLITION PLAN NOTES:**
1. LOCATION OF EXISTING WET WELL. EXISTING PUMPS TO REMAIN OPERATIONAL DURING THE ENTIRETY OF CONSTRUCTION UNTIL COMPLETION OF PROJECT, IN WHICH EXISTING WET WELL AND PUMPS WILL REMAIN ABANDONED.

EM (EXISTING)

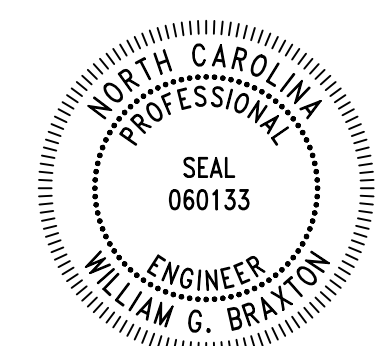
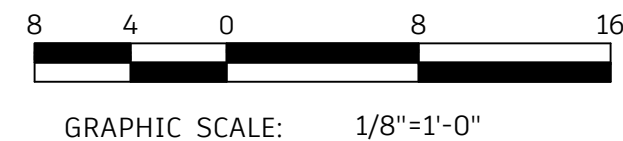
ROOM MOUNTING SURFACE FED FROM UTILITY		VOLTS 480Y/277V 3P 4W BUS AMPS 100 NEUTRAL 100%			AIC 22,000 MAIN BKR MLO LUGS STANDARD						
CKT #	CKT BKR	CIRCUIT DESCRIPTION	LOAD KVA			CKT #	CKT BKR	CIRCUIT DESCRIPTION	LOAD KVA		
			A	B	C				A	B	C
1	20/1	EX. BREAKER	0.2			2	20/1	EX. BREAKER	1.9		
3	20/1	EX. BREAKER		2.6		4	20/1	EX. BREAKER	0.45		
5	20/1	EX. SPARE			0	6	20/1	EX. BREAKER			0
7	20/1	EX. SPARE			0	8	20/1	EX. BREAKER			0
9	30/3	EX. BREAKER	0	0.133		10	20/2	EX. BREAKER			0
11					0.133	12					0
13						14	15/3	EX. PUMP BREAKER (NOTE 1)			0
15	15/2	EX. BREAKER			0.2	16					0
17					0.2	18					0
19	20/1	SPACE				20	20/3	PUMP CONTROL PANEL	1.88		0
21	20/1	SPACE				22		DISCONNECT		1.88	1.88
23	20/1	SPACE				24					0
25	20/1	SPACE			0	26	20/1	SPACE			0
27	20/1	SPACE			0	28	20/1	SPACE			0
29	20/1	SPACE			0	30	20/1	SPACE			0
			TOTAL CONNECTED KVA BY PHASE						4.12	5.27	2.22
			CONN KVA						CALC KVA		
LIGHTING			0.65	0.813	(125%)	MOTORS			5.65	6.63	(100%)
LARGEST MOTOR			2.83	0.707	(25%)	CONTINUOUS			5.3	6.63	(125%)
			TOTAL LOAD			BALANCED 3-PHASE LOAD			13.8	16.6	A

PR (EXISTING)

ROOM MOUNTING FLUSH FED FROM UTILITY		VOLTS 208Y/120V 3P 4W BUS AMPS 100 NEUTRAL 100%			AIC 22,000 MAIN BKR MLO LUGS STANDARD						
CKT #	CKT BKR	CIRCUIT DESCRIPTION	LOAD KVA			CKT #	CKT BKR	CIRCUIT DESCRIPTION	LOAD KVA		
			A	B	C				A	B	C
1	20/1	EX. BREAKER				2	20/1	EX. BREAKER			
3	20/1	EX. BREAKER				4	20/1	EX. BREAKER			
5	20/1	EX. BREAKER				6	20/1	EX. BREAKER			
7	20/1	EX. BREAKER				8	20/1	EX. BREAKER			
9	20/1	EX. BREAKER				10	20/1	EX. BREAKER			
11	20/1	EX. BREAKER				12	20/1	EX. BREAKER			
13	20/1	EX. BREAKER				14	20/1	EX. BREAKER			
15	20/2	EX. BREAKER				16	20/1	EX. BREAKER			
17						18	20/2	EX. BREAKER			
19	20/2	EX. BREAKER				20					0
21						22	20/1	CELLULAR DIALER		0.064	
23	20/1	SPACE				24	20/1	SPACE			

EQUIPMENT CONNECTION SCHEDULE

CALLOUT	DESCRIPTION	SYMBOL	VOLTS	HP	NOTES
P1	PUMP	⊕	480V 3P 3W	2 HP	
P2	PUMP	⊕	480V 3P 3W	2 HP	



Signed by: *William G. Braxton* 11/21/2025
WILLIAM G. BRAXTON, P.E.

REVISIONS

BY	NO.	DATE	DESCRIPTION

PUMP STATION ELECTRICAL PLAN
CARTERET COMMUNITY COLLEGE
MCGEE BUILDING
PUMP STATION RELOCATION
MOREHEAD CITY CARTERET COUNTY NORTH CAROLINA

OWNER: CARTERET COMMUNITY COLLEGE
ADDRESS: 3505 ARENDELL STREET MOREHEAD CITY, NC 28557
PHONE:

DESIGNED: WGB DATE: 11/21/2025
DRAWN: WGB SCALE: AS NOTED
APPROVED: LMS SHEET E1 OF 1

STROUD ENGINEERING, P.A.
422 HIGHWAY 24 MOREHEAD CITY, NC 28557 (252) 247-7479 LICENSE NO. C-06947