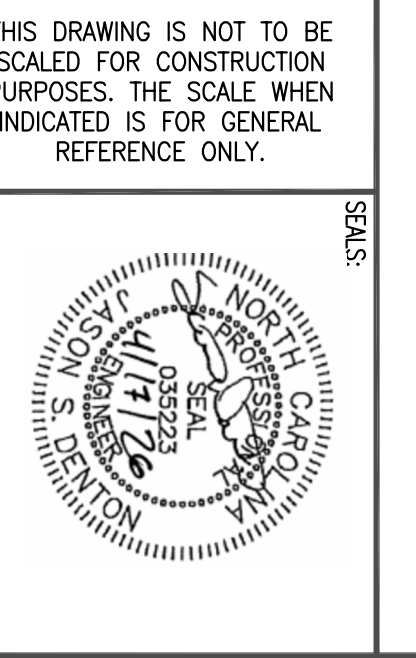


Reece, Nolan & McElrath, Inc.  
 390 Main Street  
 Canton, North Carolina 28716  
 PHONE: 828-492-4677  
 MAIL: @RN-ENGINEERS.COM  
 WWW: .RN-ENGINEERS.COM  
 NC CERT. NO. C-0149  
 © 2025



SEALS:

THIS DRAWING IS NOT TO BE SCALED FOR CONSTRUCTION PURPOSES. THE SCALE WHEN INDICATED IS FOR GENERAL REFERENCE ONLY.

# SMOKY MOUNTAIN HIGH SCHOOL FOOTBALL LIGHTING

100 SMOKY MOUNTAIN DR, SYLVA, NC 28779

REVISIONS / SUBMISSIONS		
NO	DATE	ISSUED FOR
1		
2		
3		
4		
5		
6		
7		
8		

PROJECT:		CONSTRUCTION	
ISSUED FOR:	PROJECT #	DRAWING NO.	
	2026018.00	E001	
DATE:	04/17/2026	of 4 SHEETS	

### GENERAL ELECTRICAL NOTES

1. FLOURESCENT FIXTURES WITH BALL BALLASTS SWITCH ONE BALLAST IN EACH FIXTURE TO PROVIDE HALF OR FULL ILLUMINATION OF THIS AREA. MAKE SURE THAT ONE SWITCH CONTROLS INSIDE LAMPS AND OTHER SWITCH CONTROL OUTSIDE LAMPS. TYPICAL AS NOTED OR AS REQUIRED BY THE DESIGN CODE.
2. FLOURESCENT FIXTURES HAVING ONLY ONE BALLAST OR LED FIXTURES WITH STANDARD ELECTRONIC OR DIMMING DRIVER AND BEING DIMMED, PROVIDE SWITCHING SUCH THAT ALTERNATE FIXTURES ARE CONTROLLED BY SEPARATE SWITCHES.
3. FOR LED FIXTURES WITH STEP DIMMING DRIVER, THESE FIXTURES SUCH THAT EACH HOT LEAD OF THE DRIVER IS CONTROLLED BY SEPARATE SWITCH OR RELAY.
4. THE CONTRACTOR SHALL COORDINATE WITH ALL OTHER CONTRACTORS AND TRAVEL TO LOCATE HIS WORK TO AVOID CONFLICTS.
5. CONTRACTOR TO COORDINATE EXISTING MOUNTING METHOD (FLANGE, BRACKET ETC.) WITH TYPE OF CEILING ACTUALLY INSTALLED IN THESE AREAS. TYPICAL.
6. THE CONTRACTOR SHALL NOT UTILIZE THRU-TYPE OUTLET BOXES WHERE DRIVES ARE SHOWN BACK TO BACK IN SOUND INSULATED OR SOUND SCURE AREAS TYPICAL.
7. SMOKE DETECTORS FOR AIR HANDLING UNITS SHALL BE LOCATED IN AIR DUCTS OBSERVING ALL APPLICABLE CODES AND ORDINANCES. ELECTRICAL CONTRACTOR SHALL COORDINATE THE EXACT LOCATION AND REQUIREMENTS OF INSTALLATION WITH MECHANICAL CONTRACTOR. SMOKE DETECTOR SHALL BE LOCATED IN AN ACCESSIBLE LOCATION AS DIRECTED BY THE ARCHITECT AND BE AS TO BEAR AND BOP FOR UNIT SERVED. TYPICAL.
8. SMOKE DETECTORS SHOULD NOT BE LOCATED IN A HORIZONTAL OR CLUSTER THAN 30" FROM AN AIR SUPPLY DIFFUSER OR RETURN AIR OPENING. SUPPLY OR RETURN SOURCES GREATER THAN THESE COMMONLY FOUND IN RESIDENTIAL AND SMALL COMMERCIAL ESTABLISHMENTS CAN REQUIRE GREATER CLEARANCE TO SMOKE DETECTORS. SIMILARLY, SMOKE DETECTORS SHOULD BE LOCATED SUFFICIENTLY FROM HIGH LEADOUT AIR SUPPLIES.
9. THE CONTRACTOR SHALL VERIFY THE EXACT LOCATION AND PLACEMENT OF LIGHT FIXTURES, OUTLET BOXES, DRIVES, AND EQUIPMENT WITH SITE AND ARCHITECTURAL DRAWINGS, INCLUDING REFLECTED CEILING PLANS, INTERIOR AND EXTERIOR ELEVATIONS, DETAILS, AND SECTIONS. PRIOR TO ROUGH-IN OR RE-LOCATE AS DIRECTED BY THE DESIGNER AT NO ADDITIONAL COST TO THE OWNER. ELECTRICAL DRAWINGS ARE NOT TO BE SCALED FOR SUCH LOCATIONS.
10. MOUNTING HEIGHTS GIVEN ARE TO TOP OF OUTLET BOX, UNLESS OTHERWISE NOTED. HEIGHTS MAY BE ADJUSTED TO MATCH WINDOW JOINTS, AND MUST COMPLY WITH STATE BUILDING CODE.
11. LIGHT FIXTURE WHIPS SHALL NOT EXCEED 8" IN LENGTH.
12. ALL CONDUITS AND RACEWAYS ARE TO BE CONCEALED UNLESS OTHERWISE NOTED OR APPROVED BY THE DESIGNER.
13. ALL CONDUITS, SLEEVES, INSERTS, OUTLET BOXES, AND OTHER ROUGH-IN MATERIALS SHALL BE INSTALLED AS BUILDING CONSTRUCTION PROGRESSERS.
14. ALL EQUIPMENT SHALL BE INSTALLED IN ACCORDANCE WITH THE MANUFACTURERS INSTALLATION INSTRUCTIONS.
15. IN MECHANICAL ROOMS AND OTHER AREAS WHERE LIGHT FIXTURES ARE SPECIFIED, AND DUCT WORK AND PIPING IS INSTALLED, ELECTRICAL CONTRACTOR SHALL INSTALL LIGHT FIXTURES AFTER INSTALLATION OF MECHANICAL CONTRACTORS DUCT WORK AND PIPING.
16. PROVIDE POWER FOR (AV) BOXES FROM NEAREST RECEPTACLE CIRCUIT. COORDINATE QUANTITIES AND LOCATIONS WITH MECHANICAL CONTRACTOR.
17. IN GYMNASIUMS AND OTHER AREAS WHERE ITEMS SUCH AS EXIT SIGN, FIRE ALARM DEVICES, ETC., ARE SUBJECT TO DAMAGE, PROTECT AND INSTALL GUARDS AS RECOMMENDED BY THE MANUFACTURER.
18. VENDING MACHINES TO BE GFI PROTECTED. ELECTRICAL CONTRACTOR TO VERIFY WIRING MACHINE POWER SUPPLY CORD INCLUDES GFI PROTECTION. OTHERWISE REPLACE WIRING RECEPTACLE WITH GFI PROTECTED RECEPTACLE.
19. 17. ARC FLASH LABELING TO BE PROVIDED IN ACCORDANCE WITH NEC: 110.164 AND NEC: 110.188.
20. ELECTRICAL CONTRACTOR TO MAKE ALL PROVISIONS TO PROVIDE A COORDINATE STUDY (SEE SECTION OF THE EMERGENCY POWER SYSTEMS AS APPLICABLE) TO THE NATIONAL ELECTRICAL CODE EXPRESSLY, ARTICLE 700.42, PER ARTICLE 602.02, ARTICLE 517.38, AND THE EQUIPMENT SUPPLIER. OF THIS EMERGENCY SYSTEM GENERATOR DRIVERS, ALL BREAKER TIE SETTINGS SHALL BE ADJUSTED IN ACCORDANCE WITH THIS STUDY.
21. THERE SHALL BE NO CONDUIT RUNS INSTALLED HORIZONTALLY IN SLABS.
22. ALL CONDUIT TO BE INSTALLED WITH JOCKERBALL BOXES LOCATED IN AREAS WITH LAV CEILING. SEE ARCHITECTURAL DRAWINGS FOR CEILING CONSTRUCTION.
23. ALL FLOORING OR PLANT ROOM WALL PENETRATIONS TO BE INSTALLED PER STRUCTURAL DRAWINGS.
24. ELECTRICAL CONTRACTOR IS RESPONSIBLE FOR COORDINATING WITH MANUFACTURER TO DETERMINE ALL BREAKER TRIP SETTINGS.
25. WHERE RANGES RECEPTACLES, SWITCHES, DATA OUTLETS, ETC., ARE LOCATED 48" OR CLOSER, IT IS INTENT THAT ALL DEVICES BE MOUNTED AT THE SAME HEIGHT FROM AN IMPERMEABLE FINISH TO PREVENT DAMAGE.
26. ALL WIRING IN PATIENT CARE AREAS TO MEET BRANDING AND PROTECTION REQUIREMENTS OF 2020 NEC 517.13 (A) (8).
27. FOR ALL AREAS SERVING PATIENTS, PROVIDE REDUNDANT GROUNDING ACCORDING TO NEC 517.
28. NO CONDUIT TO BE RUN IN SLAB.

### ELECTRICAL SPECIFICATIONS

IT IS THE INTENT OF THESE SPECIFICATIONS FOR THE ELECTRICAL CONTRACTOR TO FURNISH A COMPLETE ELECTRICAL SYSTEM, FULLY ADJUSTED, AND READY FOR USE.

ALL ELECTRICAL WORK TO BE DONE IN STRICT ACCORDANCE WITH THE LATEST EDITION OF THE NATIONAL ELECTRICAL CODE OBSERVING ALL STATE AND LOCAL CODES.

ELECTRICAL CONTRACTOR SHALL GET ALL NECESSARY NOTICES, PERMITS AND ALL SALES TAXES, UTILITY COMPANY CHARGES FOR SERVICE, PERMITS, FEES, AND OTHER COSTS IN CONNECTION WITH HIS WORK.

ELECTRICAL CONTRACTOR TO ENSURE THAT ALL MATERIAL AND EQUIPMENT FURNISHED FOR THIS PROJECT SHALL BE UL LISTED.

THE MATERIAL AND EQUIPMENT HAS BEEN CAREFULLY SELECTED FOR THIS PROJECT AND THE ELECTRICAL CONTRACTOR IS EXPECTED TO PROVIDE ALL ITEMS AS CLOSELY AS POSSIBLE TO THE SPECIFICATIONS AND AS CALLED FOR ON THE DRAWINGS.

ELECTRICAL CONTRACTOR SHALL SUBMIT THREE (3) SETS OF EQUIPMENT DATA SHOP DRAWINGS TO THE ENGINEER FOR ALL ITEMS TO BE FURNISHED AND INSTALLED FOR APPROVAL.

ELECTRICAL CONTRACTOR SHALL NOT USE IN THE WORK, WITHOUT EXTRA COST TO THE OWNER, ANY LABOR, MATERIALS, SERVICES, APPARATUS, DRAWINGS, INCIDENTAL CONSTRUCTION WORK, ETC. IN ORDER TO COMPLY WITH ALL APPLICABLE LAWS, ORDINANCES, AND REGULATIONS, WHETHER OR NOT SHOWN ON DRAWINGS AND/OR SPECIFIED. NO CLAIM FOR EXTRA'S WILL BE APPROVED WITHOUT PRIOR COORDINATION FOR CONFLICTS BY CONTRACTOR, AND WRITTEN REQUEST AND APPROVAL PRIOR TO PERFORMING WORK.

ALL WORK AND EQUIPMENT TO BE GUARANTEED BY CONTRACTOR FOR ONE (1) YEAR.

UPON COMPLETION OF ALL WORK AND ALL TESTS, ELECTRICAL CONTRACTOR SHALL INSTRUCT THE OWNER OR HIS REPRESENTATIVE FULLY IN THE OPERATIONS, ADJUSTMENTS, AND MAINTENANCE OF EQUIPMENT FURNISHED. ELECTRICAL CONTRACTOR SHALL PROVIDE OWNER WITH MAINTENANCE SCHEDULE FOR THE PRINCIPAL ITEMS OF EQUIPMENT FURNISHED. MANUFACTURERS ADVERTISING LITERATURE OR CATALOGS WILL NOT BE ACCEPTABLE.

ALL MATERIALS AND EQUIPMENT TO BE INSTALLED PER MANUFACTURERS INSTRUCTIONS AND GOOD RECOMMENDED PRACTICES.

ELECTRICAL CONTRACTOR SHALL GIVE FULL COOPERATION TO OTHER TRADES, WHERE THE WORK OF ELECTRICAL CONTRACTOR WILL BE INSTALLED IN CLOSE PROXIMITY TO, OR WILL INTERFERE WITH WORK OF OTHER TRADES. HE SHALL ASSIST IN WORKING OUT SPACE CONDITIONS TO MAKE SATISFACTORY ADJUSTMENTS. IF ELECTRICAL CONTRACTOR INSTALLS HIS WORK BEFORE COORDINATING WITH OTHER TRADES, HE SHALL MAKE THE NECESSARY CHANGES IN HIS WORK TO CORRECT THE CONDITION WITHOUT EXTRA CHARGE.

THE DRAWINGS ARE DIAGRAMMATIC AND INDICATE THE GENERAL ARRANGEMENTS OF SYSTEMS AND WORK INCLUDED IN THE CONTRACT. THE DRAWINGS ARE NOT TO BE SCALED.

ELECTRICAL CONTRACTOR TO VERIFY EXACT LOCATION OF EQUIPMENT, ROUTING PIPE, ETC., AND WORK CLOSELY WITH OTHER TRADES TO AVOID CONFLICTS.

ELECTRICAL CONTRACTOR TO LOCATE AND INSTALL ELECTRICAL CONTROL PANELS IN SUITABLE LOCATION WITH APPROPRIATE CLEARANCES & OVERLOAD PROTECTION FOR ALL ITEMS REQUIRED.

ELECTRICAL CONTRACTOR MAY COMBINE CONDUITS WHERE APPLICABLE, BUT MUST HOOK UP ITEMS TO PROPER CIRCUITS AS SHOWN. THE OWNER, ARCHITECT AND ELECTRICAL CONTRACTOR TO COORDINATE FOR PROPER CUTOFF HOLES, ALL STOP-UPS AND JUNCTION BOXES, AND TO VERIFY LOCATIONS.

ALL CONDUITORS SHALL BE COPPER, TYPE THHN/THWN/ (XHHW) ISOLATED POWER WITH NO PULLING COMPOUND INSULATION, 600V, EXCEPT AS INDICATED OTHERWISE. MINIMUM SIZE FOR POWER AND LIGHTING IS #12 AWG. ALUMINUM CONDUITORS WILL NOT BE ACCEPTABLE.

WHERE ALUMINUM CONDUITORS ARE UTILIZED, THEY SHALL BE TERMINATED WITH BURNDY H-F-LUG, HYDROBULLIC COMPRESSION TERMINATIONS.

EXTERIOR MOUNTED BOXES SHALL HAVE APPROVED WEATHERPROOF PLATES AND/OR COVERS.

ALL SURFACE INSTALLED BOXES SHALL HAVE N.Y.O.N. DEVICE PLATES.

ALL DEVICE OUTLETS SHALL BE FLUSH MOUNTED UNLESS SPECIFICALLY NOTED.

BALLASTS SUPPLIED WITH RECESSED FLUORESCENT FIXTURES SHALL BE APPROVED BY UNDERWRITERS' LABORATORIES AND SHALL BE ELECTRONIC TYPE, ENERGY SAVING, PREMIUM GRADE, PROPERLY APPLIED TO EACH INSTALLATION. BALLASTS SUPPLIED WITH SURFACE MOUNTED FLUORESCENT FIXTURES SHALL BE ENERGY SAVING, EXTRA LOW HEAT, SUPER PREMIUM TYPES.

ALL FIXED ELECTRICAL EQUIPMENT INCLUDING RECEPTACLES SHALL BE LABELED WITH A REFERENCE TO THE CIRCUIT AND PANEL, OR ORIGIN. ALL PANELS SHALL BE LABELED WITH PANEL NAME AND SOURCE OF SUPPLY. ALL PANEL DIRECTORIES SHALL USE ROOM IDENTIFICATIONS TO BE SUPPLIED BY THE OWNER, NOT THE ROOM NAMES AND NUMBERS ON THE DRAWINGS.

ALL LABELS REFERRING TO EMERGENCY POWER SHALL BE PER FACILITIES CURRENT COLOR CODE.

CONDUIT, WIRING, AND ELECTRICAL EQUIPMENT AND DEVICES CAUSED TO BE ABANDONED OR RENEWED, UNLESS BY CONSTRUCTION SHALL BE REMOVED BACK TO THE SOURCE. IN ADDITION, CONDUIT, WIRING, ELECTRICAL EQUIPMENT AND DEVICES DISCOVERED ABANDONED WITHIN THE LIMITS OF CONSTRUCTION SHALL BE REMOVED BACK TO THE SOURCE. EVEN IF THIS SHOULD INVOLVE REMOVAL OUTSIDE THE LIMITS OF CONSTRUCTION.

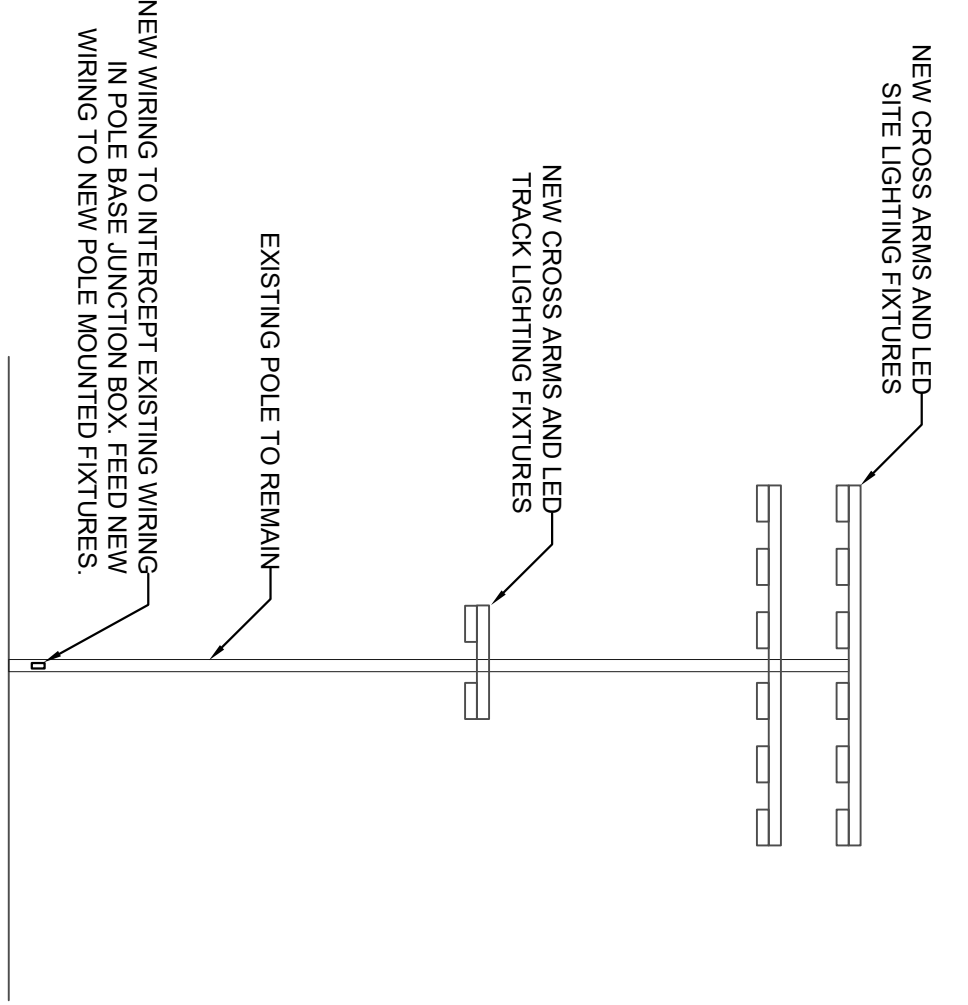
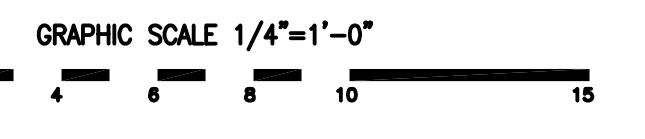
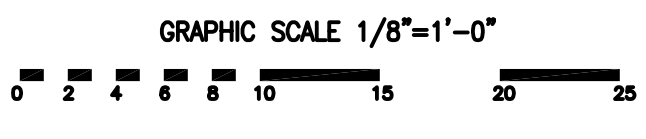
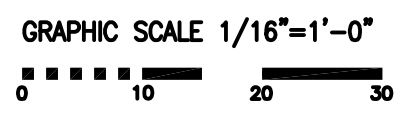
ELECTRICAL CONTRACTOR SHALL BE RESPONSIBLE FOR GROUNDING NETWORK PER NATIONAL ELECTRIC CODE ARTICLE 517.38.

ELECTRICAL CONTRACTOR SHALL BE RESPONSIBLE FOR ALL TESTING PER N.E.P.A. 99.

NO CONDUIT TO BE RUN IN SLAB.

### ELECTRICAL DESCRIPTION OF WORK

- E.C. IS RESPONSIBLE FOR THE FOLLOWING RESPONSIBILITIES:
- THE REPLACEMENT OF SITE LIGHTING FIXTURES WITH NEW LED REPLACEMENTS.
  - IMPROVING BELIEVED LUMEN LEVELS ON EXISTING SITE WITH NEW POLE-LIGHT CONFIGURATION.
  - THE REPLACEMENT OF WIRE INSIDE EXISTING POLES TO FEED NEW LED POLE LIGHTS.
  - THE REPLACEMENT OF WIRE INSIDE EXISTING POLES TO FEED NEW LED POLE LIGHTS.
  - THE PROVISION FOR WIRELESS CONTROL S OF NEW LIGHTING WITHOUT THE USE OF TERMINATING POWER AT THE PANEL OR PHYSICAL LIGHTING CONTROL CONTRACTORS.
  - THE TRAINING OF THE OWNER FOR THE NEW LIGHTING CONTROL SYSTEM.



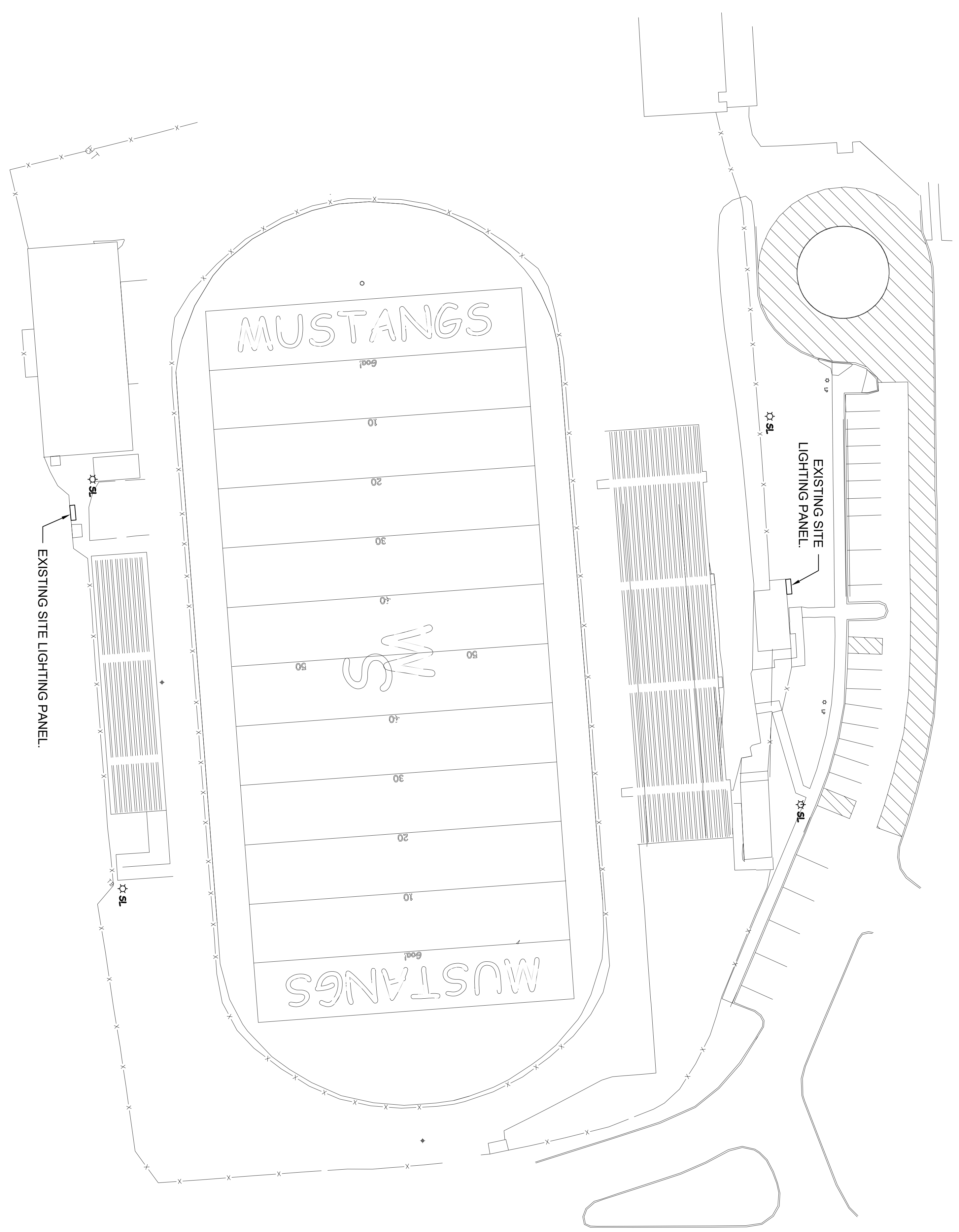
## POLE LIGHT RISER DIAGRAM

SCALE: NTS

GRAPHIC SCALE 1/16"=1'-0"

GRAPHIC SCALE 1/8"=1'-0"

GRAPHIC SCALE 1/4"=1'-0"



**ELECTRICAL SITE PLAN**  
SCALE: 1/32" = 1'-0"

**RNM ENGINEERS**  
Reece, Noland & McElrath, Inc.  
390 Main Street  
Canton, North Carolina 28716  
PHONE: 828-492-0677  
MAIL@RNM-ENGINEERS.COM  
WWW.RNM-ENGINEERS.COM  
NC CERT. NO. C-20149  
© 2025

SEALS:  
THIS DRAWING IS NOT TO BE SCALED FOR CONSTRUCTION PURPOSES. THE SCALE WHEN INDICATED IS FOR GENERAL REFERENCE ONLY.

**SMOKY MOUNTAIN HIGH SCHOOL  
FOOTBALL LIGHTING**  
100 SMOKY MOUNTAIN DR, SYLVA, NC 28779

PROJECT:

REVISIONS/SUBMISSIONS		
NO	DATE	ISSUED FOR
1		
2		
3		
4		
5		
6		
7		
8		

SHEET TITLE:  
**ELECTRICAL SITE PLAN**

ISSUED FOR:  
**CONSTRUCTION**

DESIGN BY: RND	DRAWING NO:
APPROVED BY: ASD	
PROJECT #	<b>E100</b>
2026018:00	
DATE:	04/17/2026

of 4 SHEETS



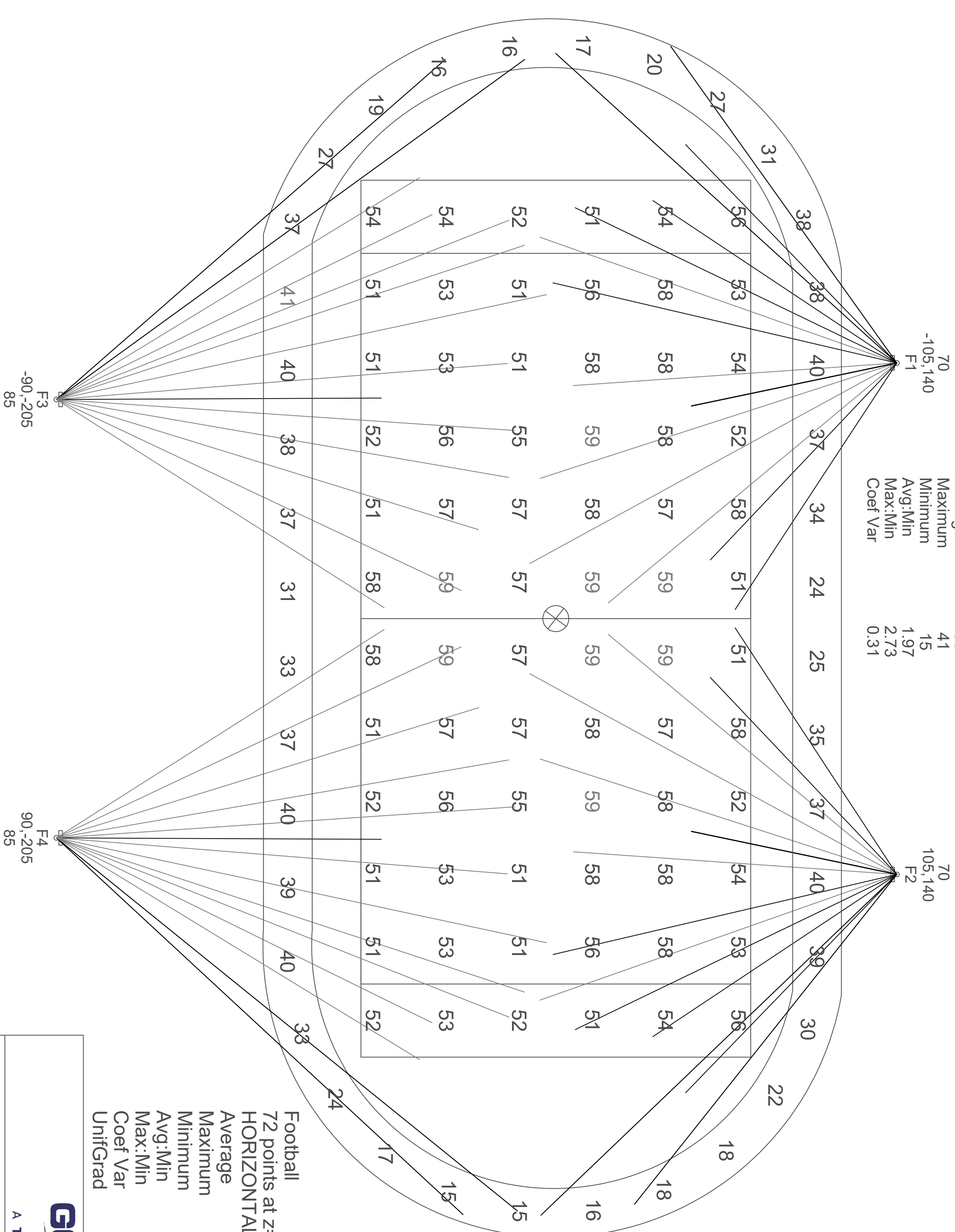
A TENCATE COMPANY

POLES F1-F2 - ADDED 2 TRACK LIGHTS AT 40' ABG  
POLES F3-F4 - ADDED 2 TRACK LIGHTS AT 50' ABG

Pole	X-loc	Y-loc	height	N15	M20	W40	NARROW	Total	kw
F1	-105	140	70ft	5	6	1		12	11.6
F2	105	140	70ft	5	6	1		12	11.6
F3	-90	-205	85ft	11	1			12	11.5
F4	90	-205	85ft	11	1			12	11.5
other								8	5.0
<b>Total</b>				<b>32</b>	<b>14</b>	<b>2</b>	<b>8</b>	<b>56</b>	<b>51.3</b>

EXISTING POLES

Track  
40 points at z=3, sp 30ft by 30ft  
HORIZONTAL FOOTCANDLES  
Average 30  
Maximum 41  
Minimum 15  
Avg:Min 1.97  
Max:Min 2.73  
Coef Var 0.31



**NARROW**  
GeoSport Clir TSL SV 650W  
Light Loss Factor = 0.950  
Watts per luminaire = 629  
Number luminaires used = 8  
kw these luminaires = 9.0

**W40**  
GeoSport Stadium TSL-1000W  
Light Loss Factor = 0.950  
Watts per luminaire = 982  
Number luminaires used = 2  
kw these luminaires = 1.9

**N15**  
GeoSport Stadium TSL-1000W  
Light Loss Factor = 0.950  
Watts per luminaire = 981  
Number luminaires used = 32  
kw these luminaires = 30.8

**M20**  
GeoSport Stadium TSL-1000W  
Light Loss Factor = 0.950  
Watts per luminaire = 970  
Number luminaires used = 14  
kw these luminaires = 13.6

**Football**  
72 points at z=3, sp 30ft by 30ft  
HORIZONTAL FOOTCANDLES  
Average 55  
Maximum 59  
Minimum 51  
Avg:Min 1.08  
Max:Min 1.16  
Coef Var 0.05  
UnifGrad 1.16

**GEOSPSPORT LIGHTING**  
A TENCATE COMPANY

SMOKY MOUNTAIN HIGH SCHOOL FOOTBALL FIELD, SYLVA, NC, D1  
Revision 3 03/18/26 Drawing 1 of 1  
877-663-5968  
WWW.GEOSPORTLIGHTING.COM

**ARNOLD ENGINEERS**  
Reece, Noland & McElrath, Inc.  
390 Main Street  
Canton, North Carolina 28716  
PHONE: 828-492-0677  
MAIL@RNMA-ENGINEERS.COM  
WWW.RNMA-ENGINEERS.COM  
NC CERT. NO. C-0149  
© 2025

SEALS:  
THIS DRAWING IS NOT TO BE SCALED FOR CONSTRUCTION PURPOSES. THE SCALE WHEN INDICATED IS FOR GENERAL REFERENCE ONLY.

# SMOKY MOUNTAIN HIGH SCHOOL FOOTBALL LIGHTING

100 SMOKY MOUNTAIN DR, SYLVA, NC 28779

PROJECT: SMOKY MOUNTAIN HIGH SCHOOL FOOTBALL FIELD, SYLVA, NC, D1

NO	REVISIONS/SUBMISSIONS	DATE	ISSUED FOR
1			
2			
3			
4			
5			
6			
7			
8			

SHEET TITLE: SITE LIGHTING VENDOR DRAWINGS

ISSUED FOR: CONSTRUCTION

DRAWN BY: RAD  
APPROVED BY: SBD  
PRODUCT #: 2026018.00  
DATE: 04/17/2026

**E101**

of 4 SHEETS



A TENCATE COMPANY

DASHED LINES = FIXTURES TURNED OFF  
 POLES F1-F2 - ADDED 2 TRACK LIGHTS AT 40' ABG  
 POLES F3-F4 - ADDED 2 TRACK LIGHTS AT 50' ABG

Pole	x-loc	y-loc	height	N15	M20	W40	NARROW	Total	kw
F1	-105	140	70ft	5	6	1		12	11.6
F2	105	140	70ft	5	6	1		12	11.6
F3	-90	-205	85ft	11	1			12	11.5
F4	90	-205	85ft	11	1			12	11.5
other				11				12	5.0
<b>Total</b>				<b>32</b>	<b>14</b>	<b>2</b>	<b>8</b>	<b>56</b>	<b>51.3</b>

EXISTING POLES

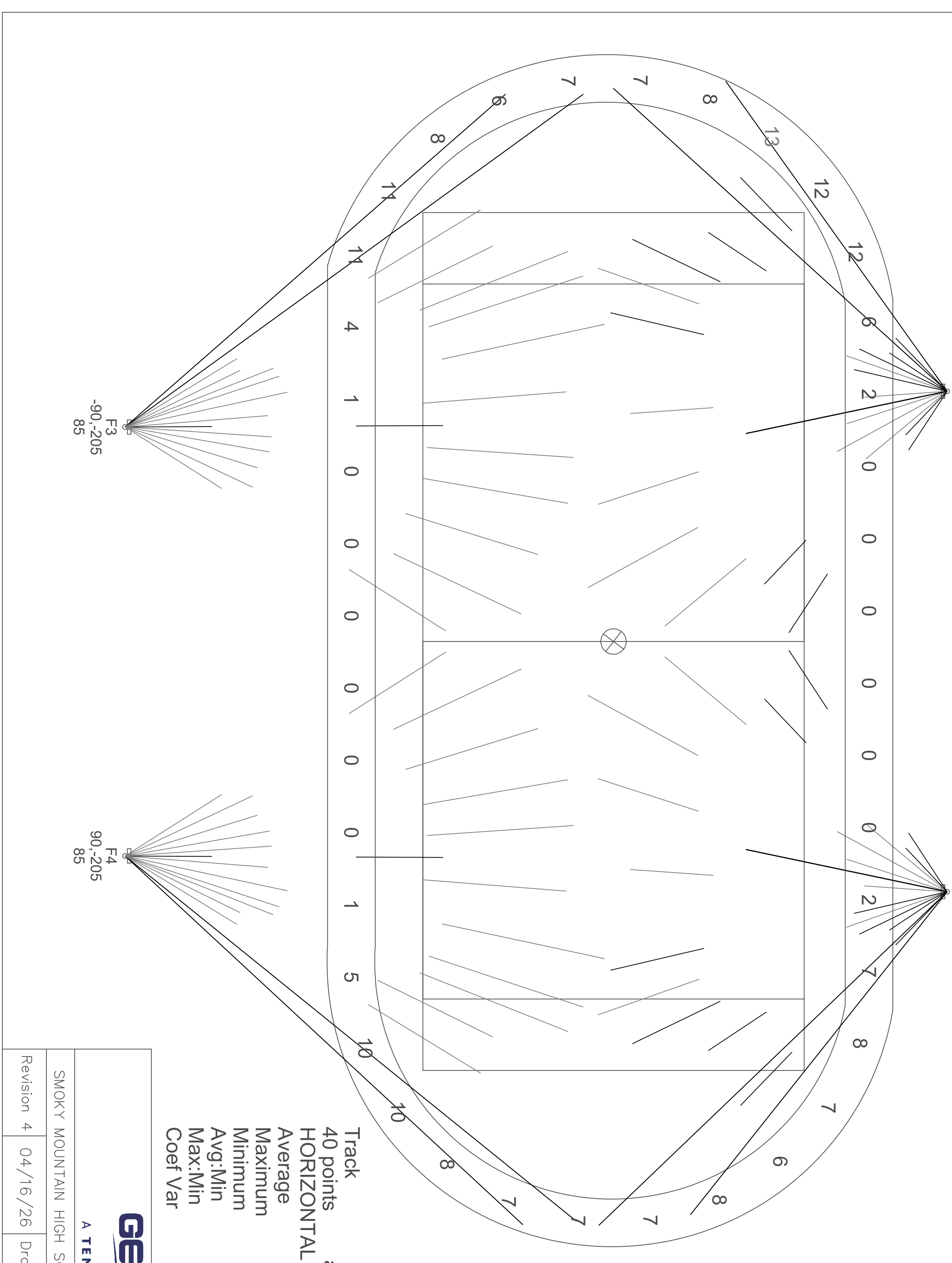
NARROW  
 Geosport Stadium TSL SV 650W  
 Light Loss Factor = 0.950  
 Watts per Luminaire = 629  
 Number luminaires used = 8  
 kw these luminaires = 5.0

W40  
 Geosport Stadium TSL 1000W  
 Light Loss Factor = 0.950  
 Watts per Luminaire = 952  
 Number luminaires used = 2  
 kw these luminaires = 1.9

N15  
 Geosport Stadium TSL 1000W  
 Light Loss Factor = 0.950  
 Watts per Luminaire = 951  
 Number luminaires used = 32  
 kw these luminaires = 30.8

M20  
 Geosport Stadium TSL 1000W  
 Light Loss Factor = 0.950  
 Watts per Luminaire = 950  
 Number luminaires used = 14  
 kw these luminaires = 13.6

Track  
 40 points at z=3, sp 30ft by 30ft  
 HORIZONTAL FOOTCANDLES  
 Average 5  
 Maximum 13  
 Minimum 0  
 Avg:Min N/A  
 Max:Min N/A  
 Coef Var 0.84



**GEO SPORT LIGHTING**  
 A TENCATE COMPANY

SMOKY MOUNTAIN HIGH SCHOOL FOOTBALL FIELD, SYLVA, NC, D1  
 877-663-5968  
 www.GEOSPORTLIGHTING.COM

Revision 4 04/16/26 Drawing 1 of 1

**RNM ENGINEERS**  
 Reece, Noland & McElrath, Inc.  
 390 Main Street  
 Canton, North Carolina 28716  
 PHONE: 828-492-0677  
 MAIL@RNM-ENGINEERS.COM  
 WWW.RNM-ENGINEERS.COM  
 NC CERT. NO. C-0149  
 ©2025

SEALS:

**SMOKY MOUNTAIN HIGH SCHOOL FOOTBALL LIGHTING**  
 100 SMOKY MOUNTAIN DR, SYLVA, NC 28779

PROJECT: SMOKY MOUNTAIN HIGH SCHOOL FOOTBALL FIELD, SYLVA, NC, D1

NO	DATE	ISSUED FOR
1		
2		
3		
4		
5		
6		
7		
8		

REVISIONS/SUBMISSIONS

SHEET TITLE: SITE LIGHTING VENDOR DRAWINGS

ISSUED FOR: CONSTRUCTION

DRAWN BY: RAO  
 APPROVED BY: SSO  
 PROJECT #: 2026018,00  
 DATE: 04/17/2026

**E102**

of 4 SHEETS