

June 3, 2025

**ADDENDUM NO. 4
TO THE
CONTRACT DOCUMENTS
FOR
CONVENIENCE CENTER & RECYCLING FACILITY CONSTRUCTION
ASSEMBLY COURT SOLID WASTE CONVENIENCE CENTER &
PARKTON SOLID WASTE CONVENIENCE CENTER**

BID ISSUE DATED MARCH 2025

To All Plan Holders:

The following revisions, additions and clarifications are hereby made part of the Contract Documents for the above-referenced project and shall be taken into account in the preparation of all Bids and the execution of all work. Bidders shall acknowledge receipt of the Addendum in the appropriate space on the Proposal Form. Failure to do so may result in your Bid being considered non-responsive.

I. CLARIFICATIONS

The bid opening will take place at the Cumberland County Solid Waste Department Office (698 Ann Street, Fayetteville, NC 28301) at a new time of 2:15PM EST.


II. DRAWINGS

Drawings E1.1 and E101 for Assembly Ct and Parkton, respectively have been revised to include generator capabilities and are attached.

Please replace Drawings E1.1 and E101 in their respective drawing sets.

END OF ADDENDUM

Sincerely,
SMITH GARDNER, INC.



Jesse C. Li, P.E.
Project Engineer
jesse@smithgardnerinc.com

Attachments (Drawings, Meeting Minutes)
Cc: Plan Holders
Amanda Lee, Cumberland County
Johnny Scott, Cumberland County
File



GONTRAM ARCHITECTURE, INC.

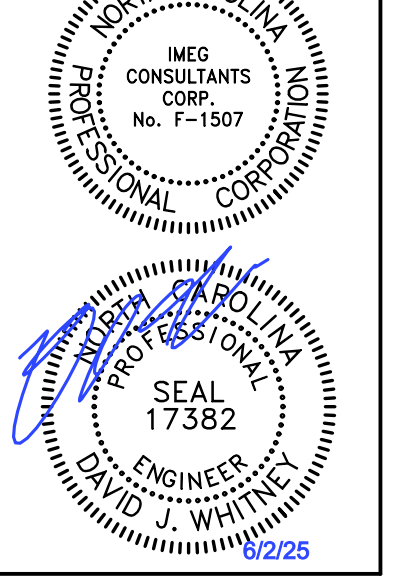
5100 UNICON DRIVE, SUITE 103 WAKE FOREST, NC 27587 PHONE: 919.876.5331 eddie@gontramarchitecture.com www.gontramarchitecture.com

© COPYRIGHT 2025

THESE DOCUMENTS ARE INSTRUMENTS OF SERVICE AND AS SUCH REMAIN THE PROPERTY OF THE ARCHITECT. PUBLISH OR USE THEM ONLY WITH THE ARCHITECT'S EXPRESSED WRITTEN APPROVAL.



322 BLUE RIDGE ROAD, SUITE 103 RALEIGH, NC 27612 (919) 571-1111

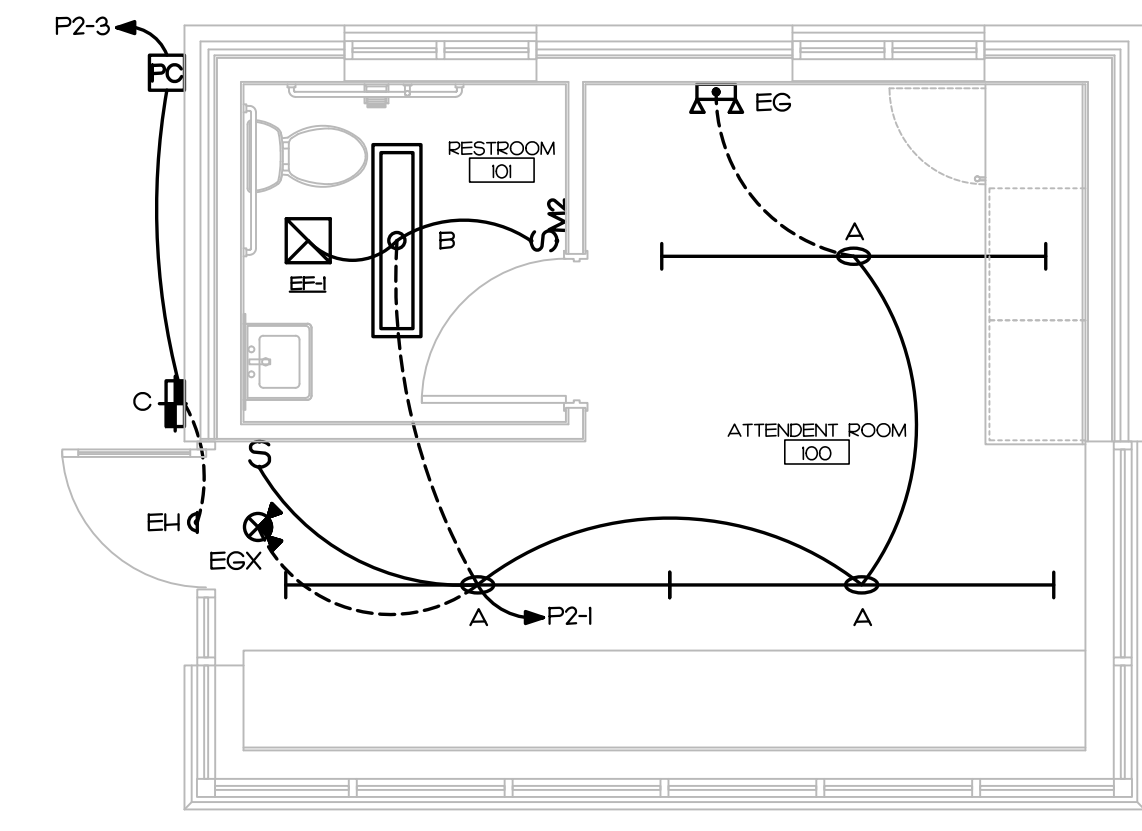


ATTENDANT BUILDING PARKTON SOLID WASTE CONVENIENCE CENTER PARKTON RD. | PARKTON NC, NC 28371

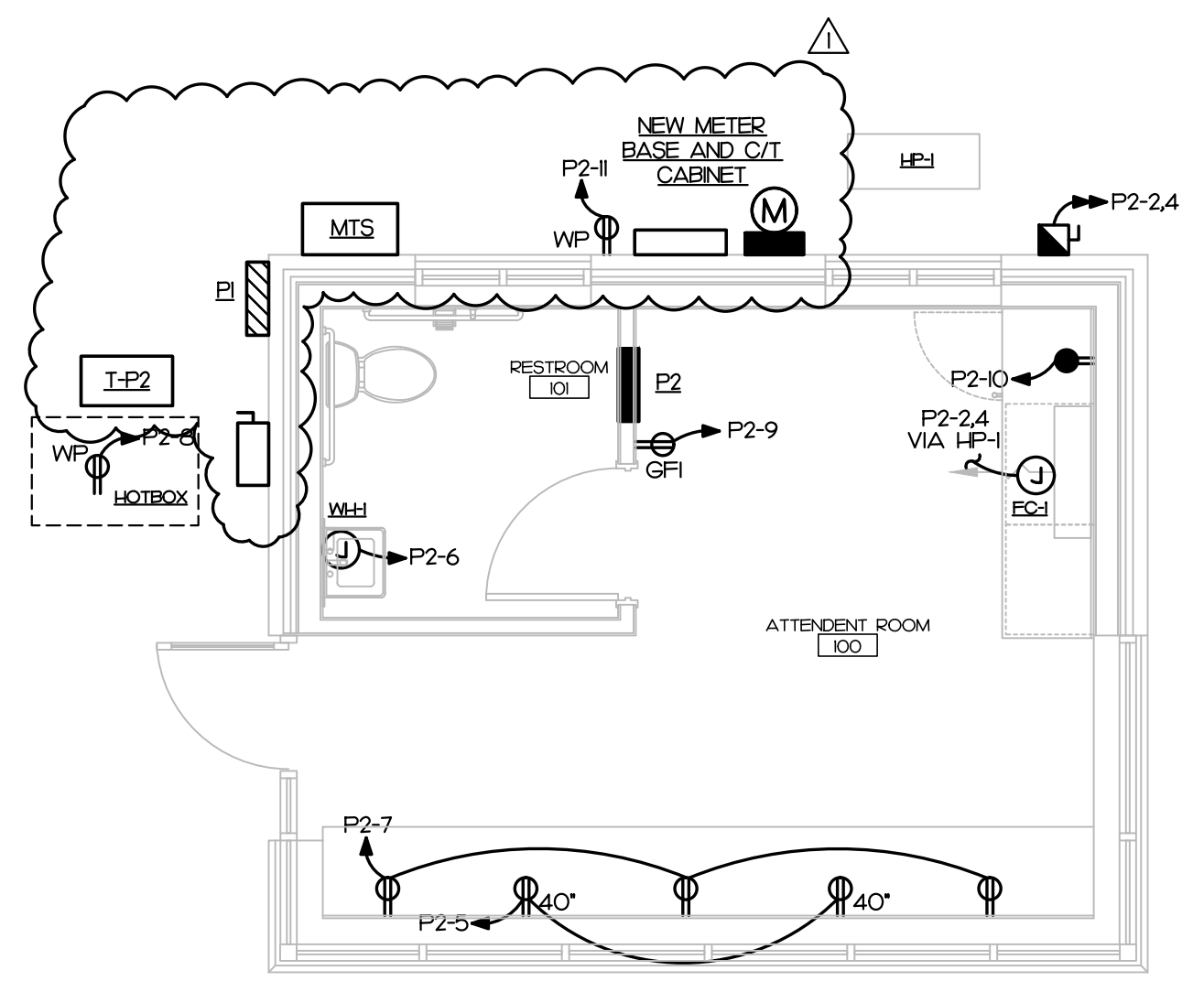
PLOT DATE: 04/10/2025 ISSUED: 04/10/2025 FOR CONSTRUCTION REVISION: REVISION 1

DRAWN BY: SWM APPROVED: DJW PROJECT NO.: 24077 RECORD: CONTENTS: ELECTRICAL PLANS, POWER RISER, PANEL SCHEDULES

SHEET: E101

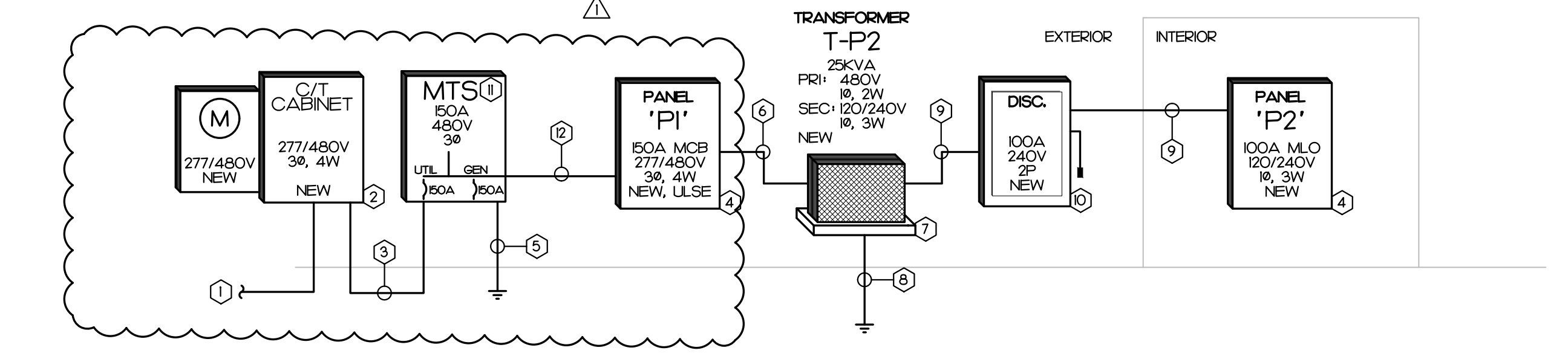


1 LIGHTING PLAN SCALE: 1/4" = 1'-0"



2 POWER PLAN SCALE: 1/4" = 1'-0"

- KEY NOTES: 1. NEW 277/480V, 3Ø, 4W UNDERGROUND SERVICE CONDUCTORS... 2. NEW C/T CABINET AND METER BASE... 3. NEW SERVICE ENTRANCE CONDUCTORS... 4. NEW PANELBOARD... 5. NEW GROUNDING ELECTRODE CONDUCTORS... 6. NEW FEEDER... 7. NEW 25KVA, 480V PRIMARY, 120/240V SECONDARY NEMA 3R TRANSFORMER... 8. NEW SUPPLY SIDE BONDING JUMPER... 9. NEW FEEDER... 10. PROVIDE A 100A, 240 VOLT, 2-POLE, NEMA 3R FUSED DISCONNECT... 11. 3-WAY MANUAL TRANSFER SWITCH... 12. NEW FEEDER...



3 POWER RISER NOT TO SCALE

PANEL P1 277/480V, 3 PHASE, 4 WIRE. Table with 4 columns: CKT, DESCRIPTION, KVA, C, G, W, CB, CKT. Includes a load schedule table and notes for bus size and mounting.

PANEL P2 120/240V, 1 PHASE, 3 WIRE. Table with 4 columns: CKT, DESCRIPTION, KVA, C, G, W, CB, CKT. Includes a load schedule table and notes for bus size and mounting.

4 PANEL SCHEDULES NOT TO SCALE

IMEG logo and contact information: 322 BLUE RIDGE ROAD, STE 113 RALEIGH, NC 27612 P: 919.571.1111



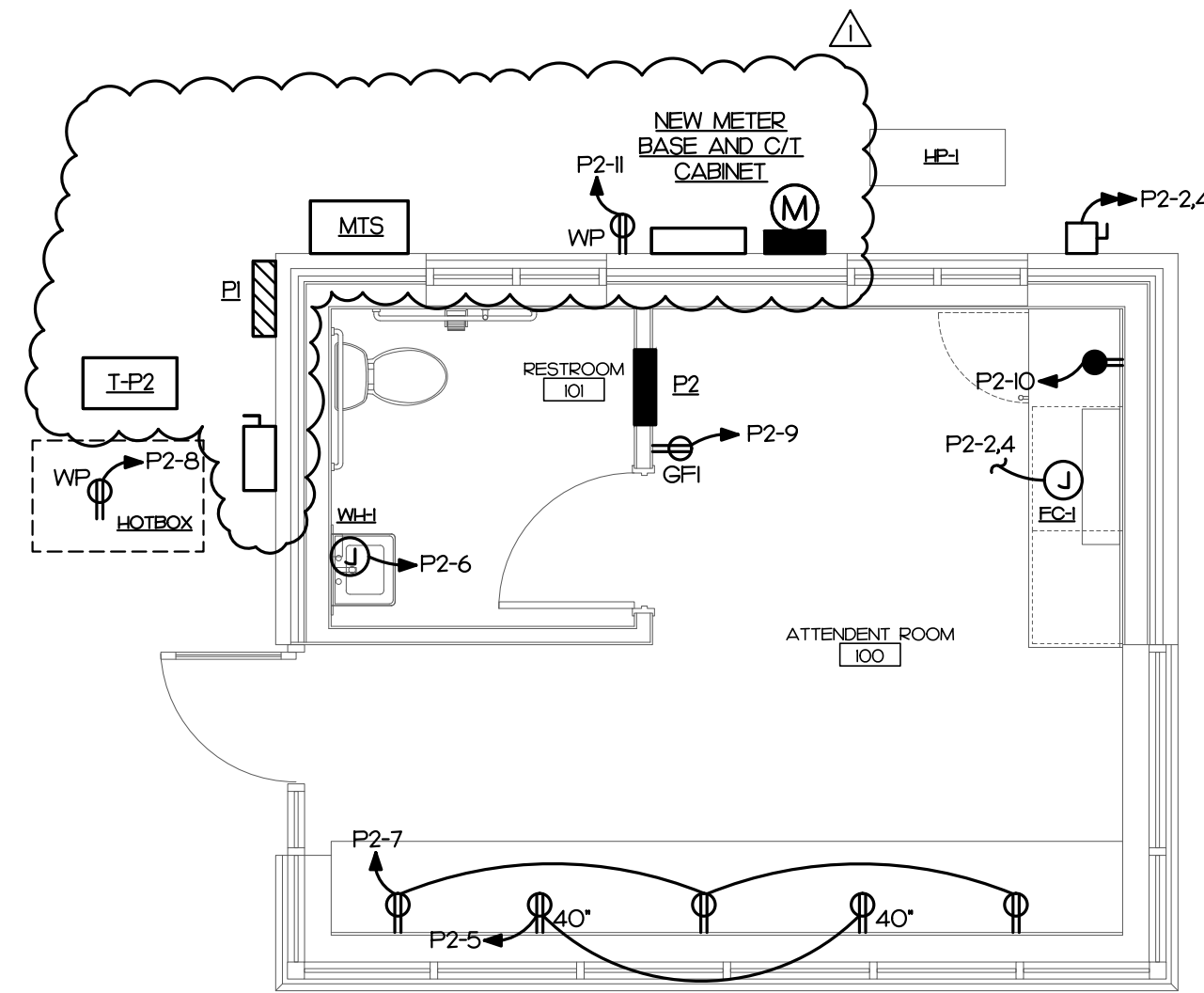
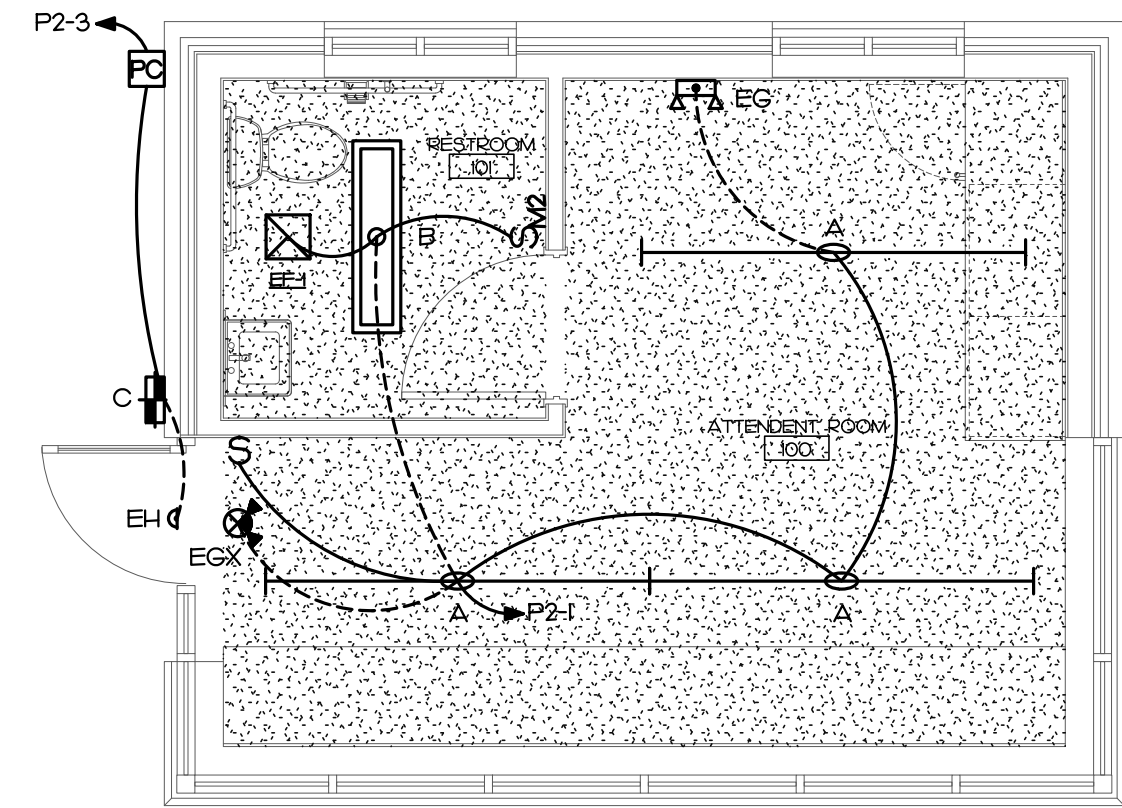
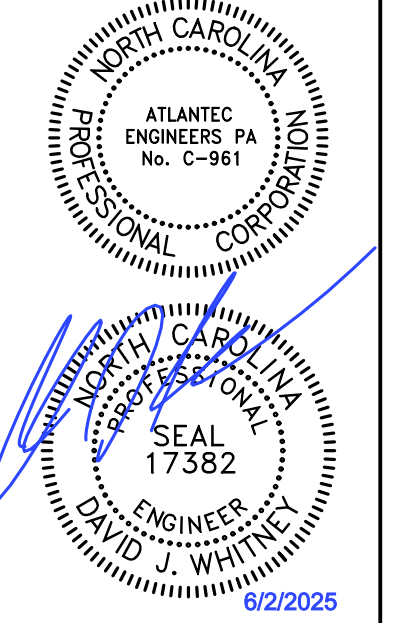
GONTRAM ARCHITECTURE, INC.

5100 UNICON DRIVE, SUITE 103
WAKE FOREST, NC 27587
PHONE: 919.876.5331
eddie@gontramarchitecture.com
www.gontramarchitecture.com

© COPYRIGHT 2023

THESE DOCUMENTS ARE INSTRUMENTS OF SERVICE AND AS SUCH REMAIN THE PROPERTY OF THE ARCHITECT. PUBLISH OR USE THEM ONLY WITH THE ARCHITECT'S EXPRESSED WRITTEN APPROVAL.

ATLANTEC ENGINEERS, PA
332 BELLE ROSE ROAD, SUITE 103
RALEIGH, NC 27602
(919) 571-1111 2322

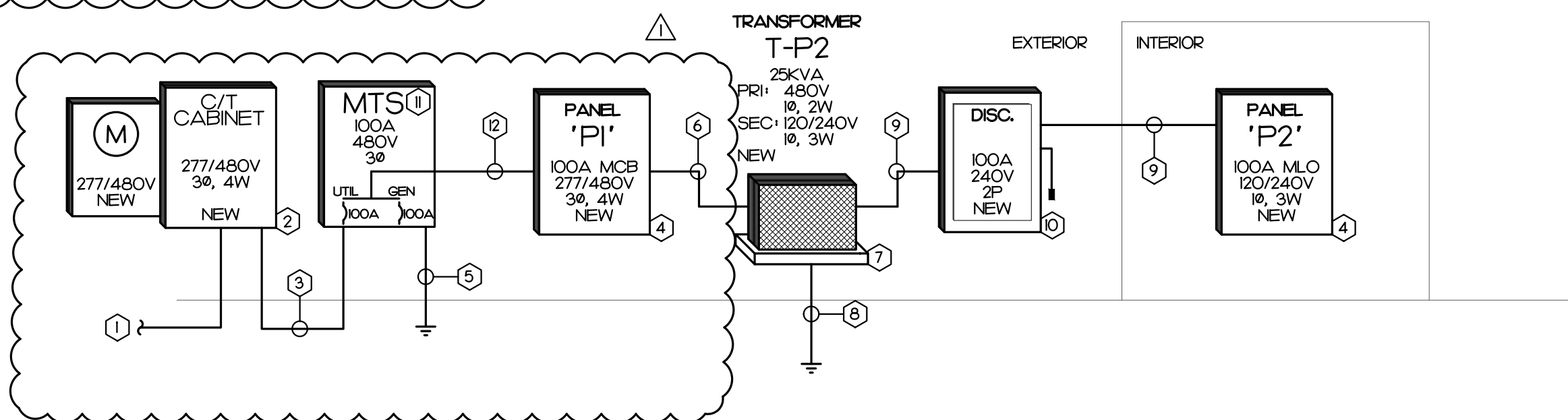


1 LIGHTING PLAN
SCALE: 1/4" = 1'-0"

2 POWER PLAN
SCALE: 1/4" = 1'-0"

KEY NOTES

- 1 NEW 277/480V, 3Ø, 4W UNDERGROUND SERVICE CONDUCTORS TO BE PROVIDED BY LOCAL UTILITY
- 2 NEW C/T CABINET AND METER BASE IN ACCORDANCE WITH LOCAL UTILITY
- 3 NEW SERVICE ENTRANCE CONDUCTORS:
 - (4) #3 IN 1/4" CONDUIT
- 4 NEW PANELBOARD, SEE PANEL SCHEDULE FOR DETAILS
- 5 NEW GROUNDING ELECTRODE CONDUCTORS PER NEC 250:
 - Ø #8G IN 1/2" CONDUIT TO BUILDING STEEL, COLD WATER MAIN
 - Ø #6G IN 1/2" CONDUIT TO 2 DRIVEN RODS
 - Ø #4G IN 1/2" CONDUIT TO REINFORCED STEEL AT CONCRETE FOOTING
- 6 NEW FEEDER, SEE PANEL SCHEDULE FOR DETAILS
- 7 NEW 25KVA, 480V PRIMARY, 120/240V SECONDARY NEMA 3R TRANSFORMER, CONTRACTOR TO PROVIDE CONCRETE MOUNTING PAD AS REQUIRED
- 8 NEW SUPPLY SIDE BONDING JUMPER PER NEC 250:
 - Ø #8G IN 1/2" CONDUIT TO 2 DRIVEN RODS
- 9 NEW FEEDER:
 - (3) #3, Ø #8G IN 1/4" CONDUIT
- 10 PROVIDE A 100A, 240 VOLT, 2-POLE, NEMA 3R FUSED DISCONNECT, FUSE AT 100 AMPS WITH MINIMUM 100kAIC RATED CURRENT LIMITING FUSES, E.C. SHALL FIELD VERIFY AVAILABLE MAXIMUM FAULT CURRENT WITH UTILITY, AND PROVIDE LABEL INDICATING THE CURRENT ON DISCONNECT PER NEC 110.24(A)
- 11 3-WAY MANUAL TRANSFER SWITCH (ESL SERIES 3020)
 - 277/480V (3 PHASES, NEUTRAL, GROUND) 100A (MIN) RATING
 - NEMA 3R ENCLOSURE
 - MIN AIC RATING OF 25KA WITH CIRCUIT BREAKERS
 - 100A 3-POLE CIRCUIT BREAKER FOR UTILITY
 - 100A 3-POLE CIRCUIT BREAKER FOR PORTABLE GENERATOR
 - SUITABLE FOR USE AS SERVICE EQUIPMENT
 - CONNECTIONS FOR:
 - *** PORTABLE GENERATOR
 - *** UTILITY
 - PROVIDED BY GC/DEVELOPER AND INSTALLED BY E.C.
- 12 NEW FEEDER:
 - (4) #3, Ø #8G IN 1/4" CONDUIT



3 POWER RISER
NOT TO SCALE

PANEL P1 277/480V, 3 PHASE, 4 WIRE

CKT	DESCRIPTION	KVA	C	G	W	CB	CKT	CKT	CB	W	G	C	KVA	DESCRIPTION	CKT
1	COMPACTOR	3.9	3/4	10	10	30	1	2	30	10	10	3/4	3.9	COMPACTOR	2
3	SPACE ONLY	3.9	---	---	---	10	3P	3	4	3P	10	---	3.9	SPACE ONLY	4
5	SPACE ONLY	3.9	---	---	---	10	---	5	6	---	10	---	3.9	SPACE ONLY	6
7	COMPACTOR	3.9	3/4	10	10	30	7	8	30	10	10	3/4	3.9	COMPACTOR	8
9	SPACE ONLY	3.9	---	---	---	10	3P	9	10	3P	10	---	3.9	SPACE ONLY	10
11	SPACE ONLY	3.9	---	---	---	10	---	11	12	---	10	---	3.9	SPACE ONLY	12
13	T-P2	5.5	1	10	6	60	13	14	20	10	10	3/4	1.0	SITE LIGHTING	14
15	TO PANEL P2	2.6	---	---	---	6	2P	15	16	---	---	---	0.0	SPACE ONLY	16
17	SPACE ONLY	0.0	---	---	---	---	---	17	18	---	---	---	0.0	SPACE ONLY	18
19	SPACE ONLY	0.0	---	---	---	---	---	19	20	---	---	---	0.0	SPACE ONLY	20
21	SPACE ONLY	0.0	---	---	---	---	---	21	22	---	---	---	0.0	SPACE ONLY	22
23	SPACE ONLY	0.0	---	---	---	---	---	23	24	---	---	---	0.0	SPACE ONLY	24
25	SPACE ONLY	0.0	---	---	---	---	---	25	26	---	---	---	0.0	SPACE ONLY	26
27	SPACE ONLY	0.0	---	---	---	---	---	27	28	---	---	---	0.0	SPACE ONLY	28
29	SPACE ONLY	0.0	---	---	---	---	---	29	30	---	---	---	0.0	SPACE ONLY	30
31	SPACE ONLY	0.0	---	---	---	---	---	31	32	---	---	---	0.0	SPACE ONLY	32
33	SPACE ONLY	0.0	---	---	---	---	---	33	34	---	---	---	0.0	SPACE ONLY	34
35	SPACE ONLY	0.0	---	---	---	---	---	35	36	---	---	---	0.0	SPACE ONLY	36
37	SPACE ONLY	0.0	---	---	---	---	---	37	38	---	---	---	0.0	SPACE ONLY	38
39	SPACE ONLY	0.0	---	---	---	---	---	39	40	---	---	---	0.0	SPACE ONLY	40
41	SPACE ONLY	0.0	---	---	---	---	---	41	42	---	---	---	0.0	SPACE ONLY	42

DESCRIPTION	CONNECTED KVA	DEMAND FACTOR	DEMAND KVA
CDNT. LOAD	1.32	125%	1.64
RECEPTACLE	1.26	100%/50%	1.26
MTRS/CDLDS	49.18	100%	49.18
HEATS	0.00	100%	0.00
WATER HEATER	2.40	100%	2.40
EQUIPMENT	1.50	100%	1.50
KITCHEN EQUIP.	0.00	65%	0.00
SPECIAL EQ.	0.00	100%	0.00
25% OF LARGEST HVAC/MOTOR			2.93
TOTAL DEMAND			58.90

100 A MINIMUM BUS SIZE
100 A MAIN CIRCUIT BREAKER
25 K MINIMUM AIC RATING

CONNECTED LOADS
PHASE A: 22 KVA
PHASE B: 18.1 KVA
PHASE C: 15.5 KVA
TOTAL: 55.7 KVA
DEMAND: 71 AMP

PANEL P2 120/240V, 1 PHASE, 3 WIRE

CKT	DESCRIPTION	KVA	C	G	W	CB	CKT	CKT	CB	W	G	C	KVA	DESCRIPTION	CKT
1	LIGHTS	0.2	1/2	12	12	20	1	2	15	12	12	1/2	1.3	HP-1	2
3	EXTERIOR LIGHTS	0.1	1/2	12	12	20	3	4	2P	12	---	---	1.3	HP-1	4
5	REC 100	0.4	1/2	12	12	20	5	6	30	10	10	3/4	2.4	WH-1	6
7	REC 100	0.5	1/2	12	12	20	7	8	20	12	12	1/2	0.5	HOTBOX	8
9	REC 100	0.2	1/2	12	12	20	9	10	20	12	12	1/2	1.0	REFRIGERATOR	10
11	REC EXTERIOR	0.2	1/2	12	12	20	11	12	20	---	---	---	0.0	SPARE	12
13	SPARE	0.0	---	---	---	---	13	14	20	---	---	---	0.0	SPARE	14
15	SPARE	0.0	---	---	---	---	15	16	20	---	---	---	0.0	SPARE	16
17	SPACE ONLY	0.0	---	---	---	---	17	18	---	---	---	---	0.0	SPACE ONLY	18
19	SPACE ONLY	0.0	---	---	---	---	19	20	---	---	---	---	0.0	SPACE ONLY	20
21	SPACE ONLY	0.0	---	---	---	---	21	22	---	---	---	---	0.0	SPACE ONLY	22
23	SPACE ONLY	0.0	---	---	---	---	23	24	---	---	---	---	0.0	SPACE ONLY	24
25	SPACE ONLY	0.0	---	---	---	---	25	26	---	---	---	---	0.0	SPACE ONLY	26
27	SPACE ONLY	0.0	---	---	---	---	27	28	---	---	---	---	0.0	SPACE ONLY	28
29	SPACE ONLY	0.0	---	---	---	---	29	30	---	---	---	---	0.0	SPACE ONLY	30
31	SPACE ONLY	0.0	---	---	---	---	31	32	---	---	---	---	0.0	SPACE ONLY	32
33	SPACE ONLY	0.0	---	---	---	---	33	34	---	---	---	---	0.0	SPACE ONLY	34
35	SPACE ONLY	0.0	---	---	---	---	35	36	---	---	---	---	0.0	SPACE ONLY	36
37	SPACE ONLY	0.0	---	---	---	---	37	38	---	---	---	---	0.0	SPACE ONLY	38
39	SPACE ONLY	0.0	---	---	---	---	39	40	---	---	---	---	0.0	SPACE ONLY	40
41	SPACE ONLY	0.0	---	---	---	---	41	42	---	---	---	---	0.0	SPACE ONLY	42

DESCRIPTION	CONNECTED KVA	DEMAND FACTOR	DEMAND KVA
CDNT. LOAD	0.29	125%	0.36
RECEPTACLE	1.26	100%/50%	1.26
MTRS/CDLDS	2.64	100%	2.64
HEATS	0.00	100%	0.00
WATER HEATER	2.40	100%	2.40
EQUIPMENT	1.50	100%	1.50
KITCHEN EQUIP.	0.00	65%	0.00
SPECIAL EQ.	0.00	100%	0.00
25% OF LARGEST HVAC/MOTOR			0.66
TOTAL DEMAND			6.82

100 A MINIMUM BUS SIZE
MAIN LUGS ONLY
10 K MINIMUM AIC RATING

CONNECTED LOADS
PHASE A: 5.5 KVA
PHASE B: 2.6 KVA
TOTAL: 8.1 KVA
DEMAND: 37 AMP

4 PANEL SCHEDULES
NOT TO SCALE

ATTENDANT BUILDING
ASSEMBLY COURT SOLID WASTE
CONVENIENCE CENTER
575 ASSEMBLY COURT | FAYETTEVILLE NC 28306

PLOT DATE:
03/12/2025
ISSUED:
03/12/2025
FOR CONSTRUCTION
REVISION:
REVISION 1

DRAWN BY: SWM APPROVED: DJW
PROJECT NO.: 22003 RECORD:
CONTENTS:
ELECTRICAL PLANS
POWER RISER
PANEL SCHEDULE

SHEET:
E1.1
OF 3